

F.A.U. RTE.	SECTION	COUNTY	TOTAL SHEETS	SHEET NO.
2761	0102 RS-6	COOK	28	1
		ILLINOIS	CONTRACT NO. 60663	

STATE OF ILLINOIS
DEPARTMENT OF TRANSPORTATION
DIVISION OF HIGHWAYS

**PROPOSED
HIGHWAY PLANS**

FAU ROUTE 2761 (CANFIELD AVENUE)
FROM FOSTER AVE. TO DEVON AVE.

RESURFACING

SECTION: 0102RS-6

PROJECT:

COUNTY: COOK

C-91-348-98

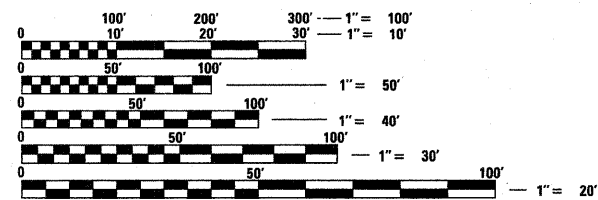


FOR INDEX OF SHEETS, SEE SHEET NO. 2

THIS IMPROVEMENT IS LOCATED
IN THE CITIES OF CHICAGO
AND PARK RIDGE

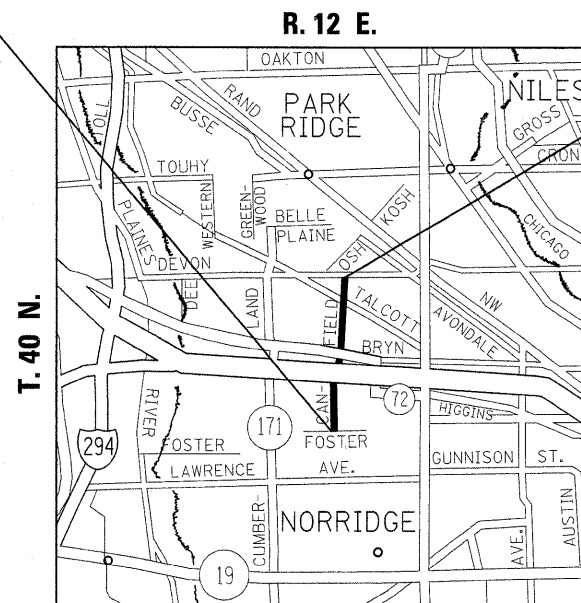
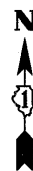
IMPROVEMENT BEGINS
STATION 15 + 25

IMPROVEMENT ENDS
STATION 98 + 90



FULL SIZE PLANS HAVE BEEN PREPARED USING STANDARD
ENGINEERING SCALES. REDUCED SIZED PLANS WILL NOT
CONFORM TO STANDARD SCALES. IN MAKING MEASUREMENTS
ON REDUCED PLANS, THE ABOVE SCALES MAY BE USED.

J.U.L.I.E.
JOINT UTILITY LOCATION INFORMATION FOR EXCAVATION
1-800-892-0123
OR 811



NORWOOD PARK TOWNSHIP

TRAFFIC DATA

ADT 2006 = 13,700
POSTED SPEED LIMIT = 30 MPH

OMISSION
STA. 49 + 10 TO STA. 55 + 90

STATE OF ILLINOIS
DEPARTMENT OF TRANSPORTATION
DIVISION OF HIGHWAYS

SUBMITTED APRIL 13, 2009

Diana M. O'Keefe
DEPUTY DIRECTOR OF HIGHWAYS, REGION ENGINEER

May 1, 2009
Charles J. Ingersoll
ENGINEER OF DESIGN AND ENVIRONMENT

May 1, 2009
Christine M. Reed
DIRECTOR OF HIGHWAYS, CHIEF ENGINEER

PRINTED BY THE AUTHORITY
OF THE STATE OF ILLINOIS

GROSS LENGTH = 8,365 FT. = 1.584 MILE
NET LENGTH = 7,685 FT. = 1.455 MILE

PROJECT ENGINEER: DANIEL WILGREEN 847-705-4240
PROJECT MANAGER: KEN ENG

CONTRACT NO. 60663

DIST. 1 DESIGN: PLAN PREPARATION ENGINEER: KEN ENG / DANIEL WILGREEN 847-705-4250