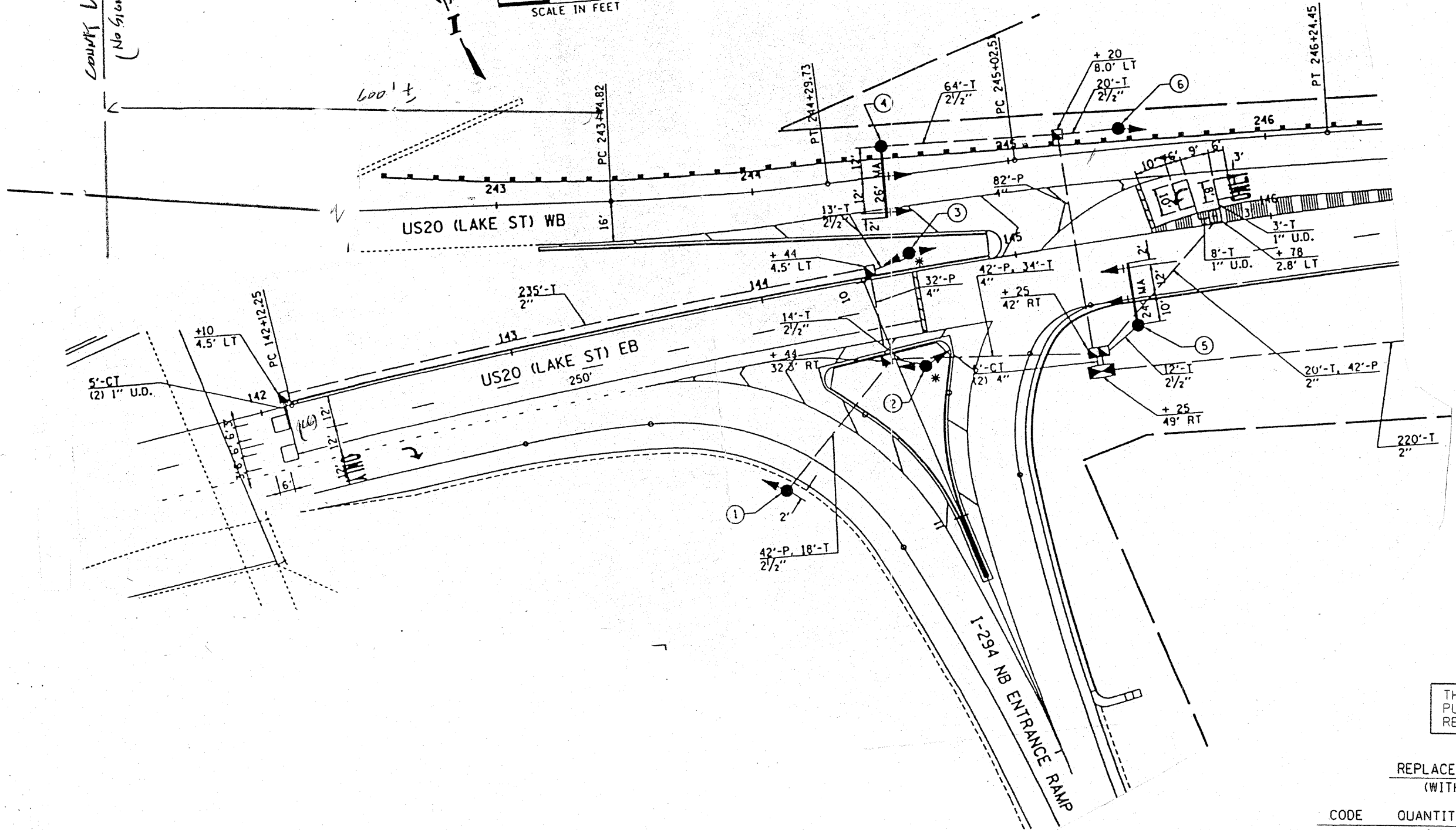
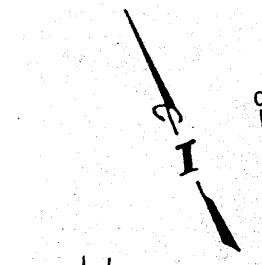
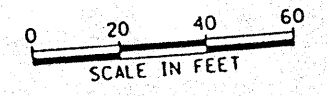


TRAFFIC SIGNAL LEGEND

	PROPOSED	EXISTING
DETECTOR LOOP		
SIGNAL HEAD		
G.S. CONDUIT IN TRENCH OR PUSHED		
SIGNAL HEAD WITH BACKPLATE		
RACEWAY FOR MAGNETIC DETECTOR, TYPE I OR II		
VEHICLE DETECTOR, NON-COMPENSATED MAGNETIC TYPE		

COUNTY LAKE RD.
(No Signals)



THIS PLAN IS FOR THE SOLE PURPOSE OF DETECTOR LOOP REPLACEMENTS ONLY

REPLACE ALL DETECTOR LOOPS AS SHOWN (WITHIN THE RESURFACING LIMITS)

CODE	QUANTITY	UNIT	ITEM
86600600	146	FOOT	DETECTOR LOOP, REPLACEMENT

FILE NAME =	USER NAME = kanthaphixaybc	DESIGNED - BCK	REVISED -
c:\pwork\pwidot\KANTHAPHIXAYBC\d81126	4\traffic.legend_v7.dgn	DRAWN - BCK	REVISED -
	PLOT SCALE = 39.9360' / IN.	CHECKED - DAD	REVISED -
	PLOT DATE = 4/3/2009	DATE	REVISED -

STATE OF ILLINOIS
DEPARTMENT OF TRANSPORTATION

DISTRICT ONE - DETECTOR LOOP REPLACEMENT
U.S. ROUTE 20 @ I-294 RAMP

SCALE: NONE SHEET NO. 21 OF SHEETS STA. TO STA.

F.A. RTE.	SECTION	COUNTY	TOTAL SHEETS	SHEET NO.
		Cook	21	BA
CONTRACT NO.				

FED. ROAD DIST. NO. ILLINOIS FED. AID PROJECT