

F.A.U. RTE.	SECTION	COUNTY	TOTAL SHEETS	SHEET NO.
1295	0305 RS-1	COOK	25	1
FED. ROAD DIST. NO. 1	ILLINOIS	CONTRACT NO. G0E27		

STATE OF ILLINOIS  
DEPARTMENT OF TRANSPORTATION  
DIVISION OF HIGHWAYS

**PROPOSED  
HIGHWAY PLANS**

F.A.U. 1295 / KENSINGTON ROAD  
SECTION: 0305 RS-1  
IL 83 TO U.S. RTE. 45  
RESURFACING (3P)

FOR INDEX OF SHEETS, SEE SHEET NO. 2

DESIGN DESIGNATION: OTHER PRINCIPAL ARTERIAL  
SPEED LIMIT : 30 - 45 M.P.H.  
2005 ADT = 25,000

IMPROVEMENT LOCATED  
IN THE VILLAGE OF MOUNT PROSPECT

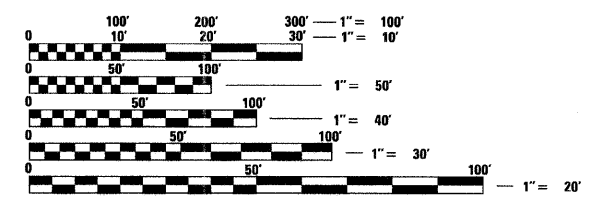
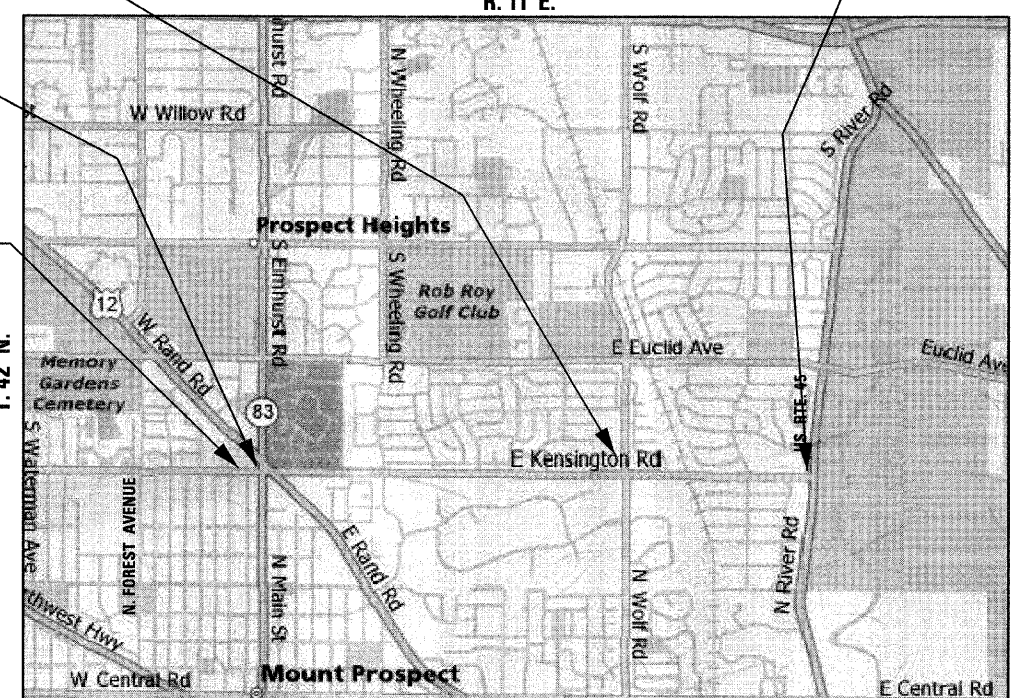
PAVING OMISSION  
STA. 113 + 97 TO  
STA. 116 + 63

PAVING OMISSION  
STA. 37 + 74 TO  
STA. 38 + 83

BEGIN IMPROVEMENT  
STA. 35 + 88

COUNTY: COOK  
C-91-348-08  
WHEELING TOWNSHIP  
R. 11 E.

END IMPROVEMENT  
STA. 155 + 75



FULL SIZE PLANS HAVE BEEN PREPARED USING STANDARD ENGINEERING SCALES. REDUCED SIZED PLANS WILL NOT CONFORM TO STANDARD SCALES. IN MAKING MEASUREMENTS ON REDUCED PLANS, THE ABOVE SCALES MAY BE USED.

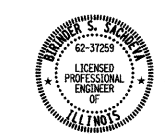
J.U.L.I.E.  
JOINT UTILITY LOCATION INFORMATION FOR EXCAVATION  
1-800-892-0123  
OR 811

GROSS LENGTH OF PROJECT = 11,878.00 FEET = 2.250 MILES  
NET LENGTH OF PROJECT = 11,603.00 FEET = 2.198 MILES

DISTRICT ONE - DESIGN  
PROJECT MANAGER : ISAAC KWARTENG (847) 705-4230  
PROJECT ENGINEER : RON ZENAROSA (847) 705-4212

CONTRACT NO. 60E27

DESIGN SECTION ENGINEER :  
CHRISTIAN-ROGE & ASSOCIATES, INC.  
ENGINEERS - PLANNERS - SURVEYORS  
211 W. WACKER DRIVE CHICAGO, IL 60606  
TELEPHONE: 312-372-2023



Birinder S. Sachdeva  
BIRINDER S. SACHDEVA, P.E.  
EXPIRES: 11-30-2009  
February 27, 2009  
DATE

STATE OF ILLINOIS  
DEPARTMENT OF TRANSPORTATION  
DIVISION OF HIGHWAYS

SUBMITTED MARCH 3, 2009

*Diana M. O'Keefe*  
DEPUTY DIRECTOR OF HIGHWAYS, REGION ONE ENGINEER

May 1, 2009  
*Charles G. Ingrassia*  
ENGINEER OF DESIGN AND ENVIRONMENT

May 1, 2009  
*Christine M. Reed*  
DIRECTOR OF HIGHWAYS, CHIEF ENGINEER

**PRINTED BY THE AUTHORITY  
OF THE STATE OF ILLINOIS**