

F.A.P. RTE.	SECTION	COUNTY	TOTAL SHEETS	SHEET NO.
876	161 Y-RS 3	COOK	26	1
FED. ROAD DIST. NO. 1	ILLINOIS	CONTRACT NO. 60E70		

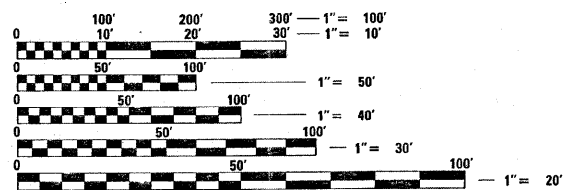
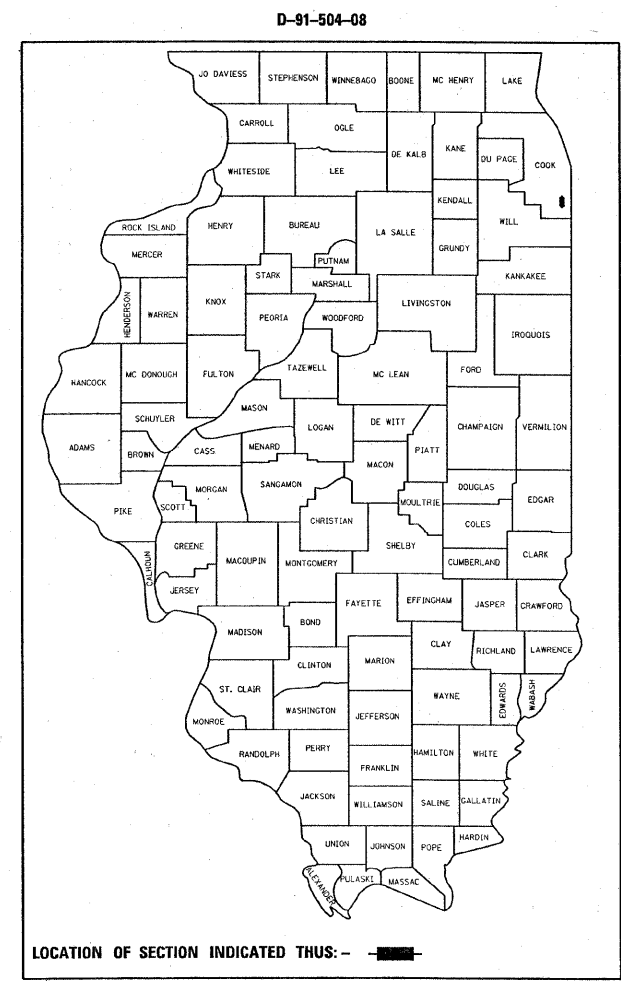
STATE OF ILLINOIS
DEPARTMENT OF TRANSPORTATION
DIVISION OF HIGHWAYS

**PROPOSED
HIGHWAY PLANS**
F.A.P. 876 /IL 1 (HALSTED ST.)
RIDGE RD. TO STRIEFF LN.
RESURFACING (3P)
SECTION: 161 Y-RS-3

FOR INDEX OF SHEETS, SEE SHEET NO. 2

PROJECT LOCATED IN THE VILLAGES
OF HOMEWOOD AND GLENWOOD

COOK COUNTY
C-91-504-08



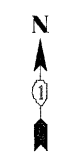
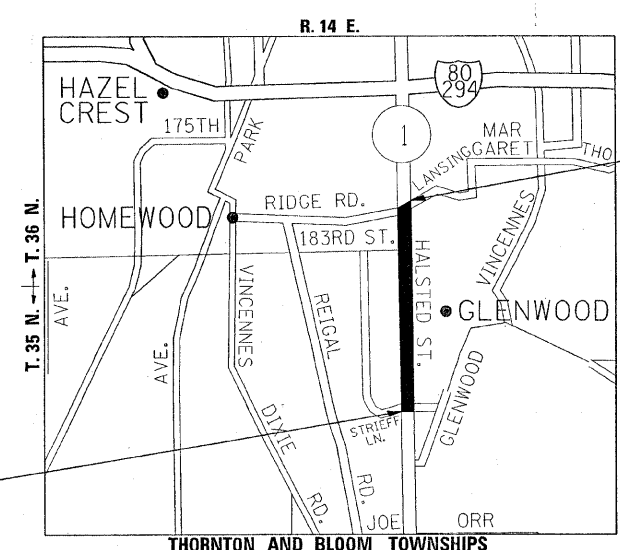
FULL SIZE PLANS HAVE BEEN PREPARED USING STANDARD ENGINEERING SCALES. REDUCED SIZED PLANS WILL NOT CONFORM TO STANDARD SCALES. IN MAKING MEASUREMENTS ON REDUCED PLANS, THE ABOVE SCALES MAY BE USED.

J.U.L.I.E.
JOINT UTILITY LOCATION INFORMATION FOR EXCAVATION
1-800-892-0123
OR 811

PROJECT ENGINEER: JENPAI CHANG (847) 705-4432
PROJECT MANAGER: KEN ENG (847) 705-4247

CONTRACT NO. 60E70

PROJECT BEGINS
STA. 7 + 10



TRAFFIC DATA:
2007 ADT - 33600
SPEED LIMIT - 35 TO 40 MPH

PROJECT ENDS
STA. 46 + 64

GROSS AND NET LENGTH OF PROJECT = 3954 LIN FT = .75 MILES

STATE OF ILLINOIS
DEPARTMENT OF TRANSPORTATION
DIVISION OF HIGHWAYS

SUBMITTED MARCH 30, 20 09

Diana M. O'Keefe DE
DEPUTY DIRECTOR OF HIGHWAYS, REGION ENGINEER

May 1, 20 09

Charles J. Ingersoll RD
ENGINEER OF DESIGN AND ENVIRONMENT

May 1, 20 09

Christine M. Reed RD
DIRECTOR OF HIGHWAYS, CHIEF ENGINEER

PRINTED BY THE AUTHORITY
OF THE STATE OF ILLINOIS