

F.A.P. RTE.	SECTION	COUNTY	TOTAL SHEETS	SHEET NO.
870	533 X-RS-5	DUPAGE	25	1
FED. ROAD DIST. NO.	ILLINOIS	CONTRACT NO. 60E71		

STATE OF ILLINOIS
DEPARTMENT OF TRANSPORTATION
DIVISION OF HIGHWAYS

PROPOSED HIGHWAY PLANS

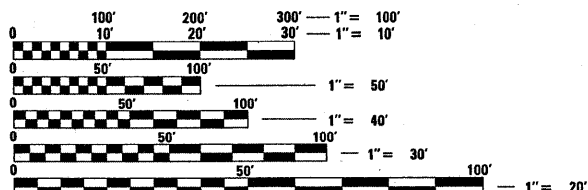
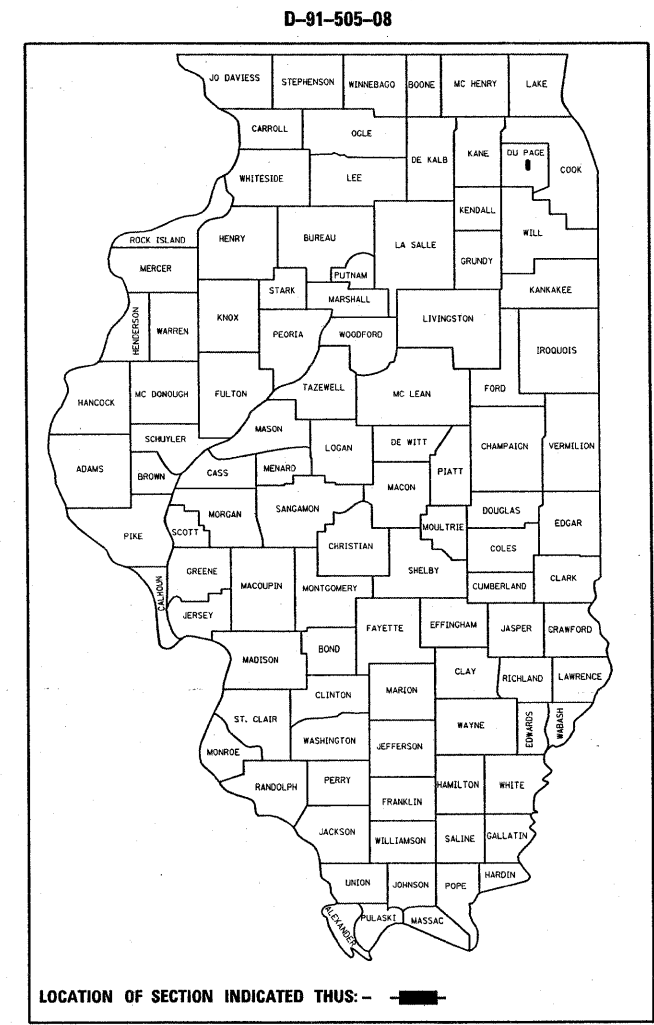
F.A.P. ROUTE 870: IL-53
MADISON STREET TO BRYANT AVE.
SECTION 533 X-RS-5
RESURFACING (3P)

DUPAGE COUNTY
C-91-505-08

FOR INDEX OF SHEETS, SEE SHEET NO. 2

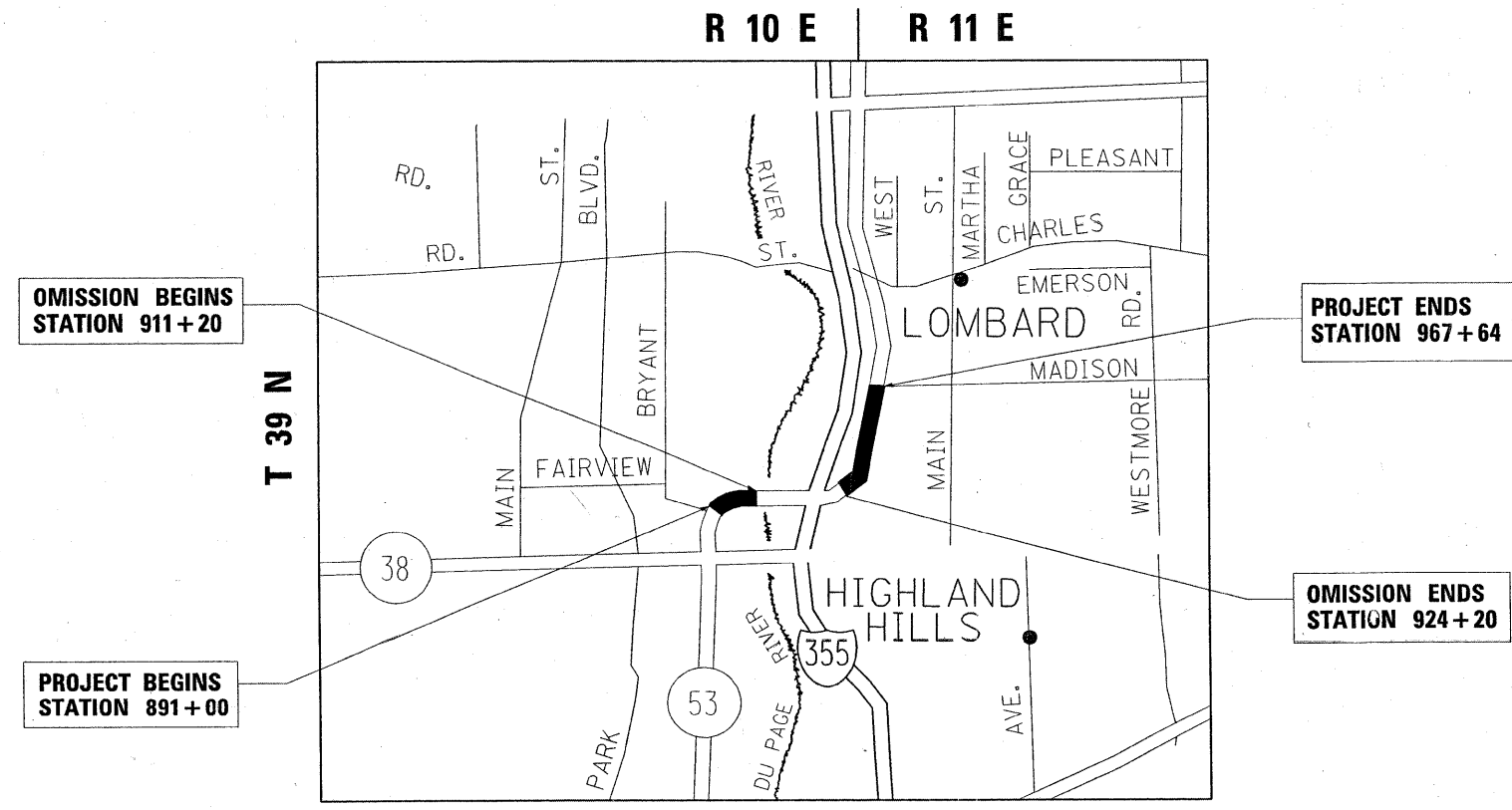
**THE PROJECT IS LOCATED
IN THE VILLAGE OF LOMBARD**

AVERAGE DAILY TRAFFIC 2007 = 15,300
POSTED SPEED LIMIT = 45 MPH



FULL SIZE PLANS HAVE BEEN PREPARED USING STANDARD ENGINEERING SCALES. REDUCED SIZED PLANS WILL NOT CONFORM TO STANDARD SCALES. IN MAKING MEASUREMENTS ON REDUCED PLANS, THE ABOVE SCALES MAY BE USED.

J.U.L.I.E.
JOINT UTILITY LOCATION INFORMATION FOR EXCAVATION
1-800-892-0123
OR 811



BLOOMINGDALE TOWNSHIP

GROSS LENGTH = 7,664 FT = 1.45 MILES
NET LENGTH = 6,364 FT = 1.21 MILES

PROJECT ENGINEER JENPAI CHANG (847) 705-4432
PROJECT MANAGER KEN ENG

CONTRACT NO. 60E71

STATE OF ILLINOIS
DEPARTMENT OF TRANSPORTATION
DIVISION OF HIGHWAYS

SUBMITTED MARCH 19, 20 09
Diane M. O'Keefe DEPUTY DIRECTOR OF HIGHWAYS, REGION ENGINEER
May 1, 20 09
Charles J. Ingersoll ENGINEER OF DESIGN AND ENVIRONMENT
May 1, 20 09
Christine M. Reed DIRECTOR OF HIGHWAYS, CHIEF ENGINEER

**PRINTED BY THE AUTHORITY
OF THE STATE OF ILLINOIS**