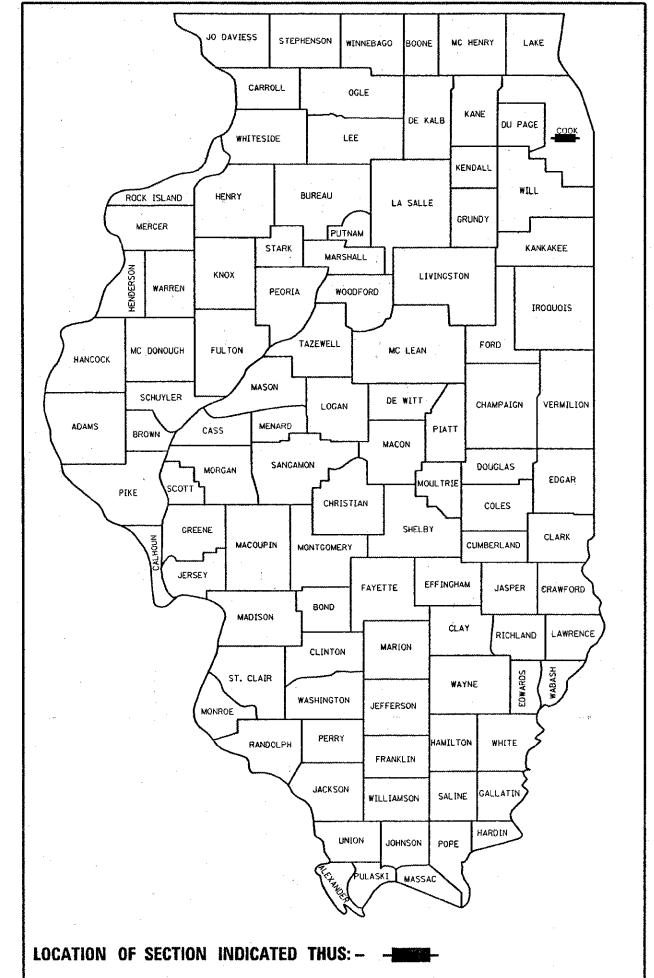


F.A.U. RTE.	SECTION	COUNTY	TOTAL SHEETS	SHEET NO.
1519	2008-032 RS	COOK	21	1
FED. ROAD DIST. NO.	ILLINOIS	CONTRACT NO. 60E72		

D -91-506-08



LOCATION OF SECTION INDICATED THUS: - ■ -

STATE OF ILLINOIS
DEPARTMENT OF TRANSPORTATION
DIVISION OF HIGHWAYS

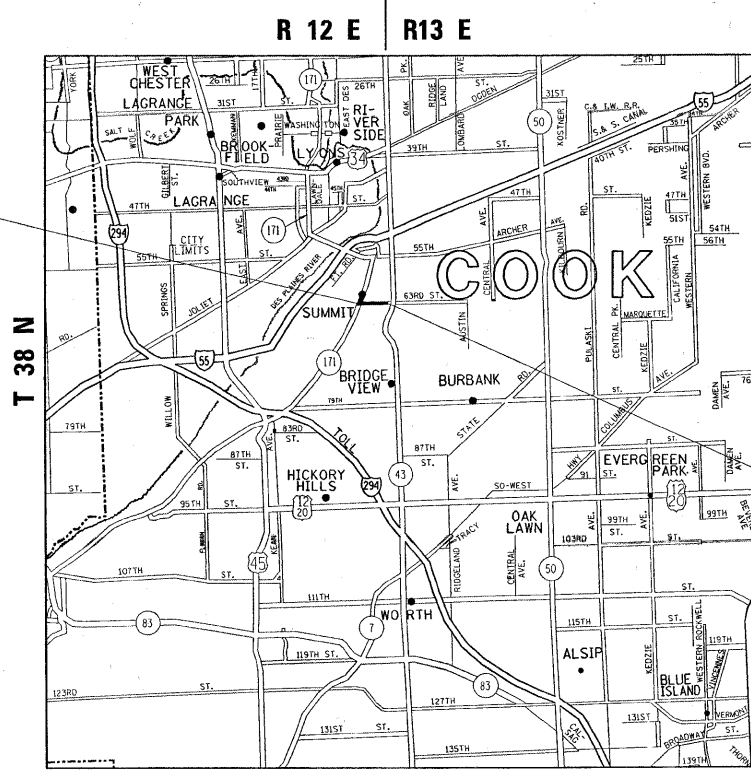
**PROPOSED
HIGHWAY PLANS**

FAU 1519: 63RD STREET
ILL 171 (ARCHER AVE.) TO ILL 43
SECTION: 2008-032 RS
RESURFACING (3P)

**COOK COUNTY
C-91-506-08**

FOR INDEX OF SHEETS, SEE SHEET NO. 2

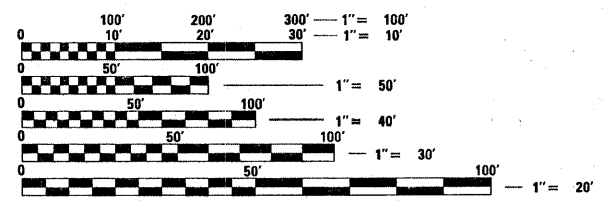
THE PROJECT IS LOCATED IN THE
VILLAGE OF SUMMIT



PROJECT BEGINS
STA. 1+68

TRAFFIC DATA
2006 ADT = 17,100
POSTED SPEED LIMIT = 30 MPH

PROJECT ENDS
STA. 35+82



FULL SIZE PLANS HAVE BEEN PREPARED USING STANDARD
ENGINEERING SCALES. REDUCED SIZED PLANS WILL NOT
CONFORM TO STANDARD SCALES. IN MAKING MEASUREMENTS
ON REDUCED PLANS, THE ABOVE SCALES MAY BE USED.

J.U.L.I.E.
JOINT UTILITY LOCATION INFORMATION FOR EXCAVATION
1-800-892-0123
OR 811

PROJECT ENGINEER DAN WILGREEN (847) 705-4240
PROJECT MANAGER KEN ENG (847) 705-4247

GROSS & NET LENGTH OF PROJECT = 3,414 LINEAL FEET = 0.65 MILE

CONTRACT NO. 60E72

STATE OF ILLINOIS
DEPARTMENT OF TRANSPORTATION
DIVISION OF HIGHWAYS

SUBMITTED MARCH 24, 20 09

Diana M. O'Keefe
DEPUTY DIRECTOR OF HIGHWAYS, REGION ENGINEER

May 1, 20 09
Charles J. Ingersoll
ENGINEER OF DESIGN AND ENVIRONMENT

May 1, 20 09
Christine M. Reed
DIRECTOR OF HIGHWAYS, CHIEF ENGINEER

**PRINTED BY THE AUTHORITY
OF THE STATE OF ILLINOIS**