

F.A.U. RTE.	SECTION	COUNTY	TOTAL SHEETS	SHEET NO.
1324	3228 D-Z-Y-RS-1	COOK	32	1
FED. ROAD DIST. NO. 1		ILLINOIS	CONTRACT NO. 60F26	

FOR INDEX OF SHEETS, SEE SHEET NO. 2

DESIGN DESIGNATION:

SPEED LIMIT : 35 M.P.H.

2007 ADT = 44,600

IMPROVEMENT LOCATED IN THE VILLAGE OF MORTON GROVE AND THE VILLAGE OF NILES

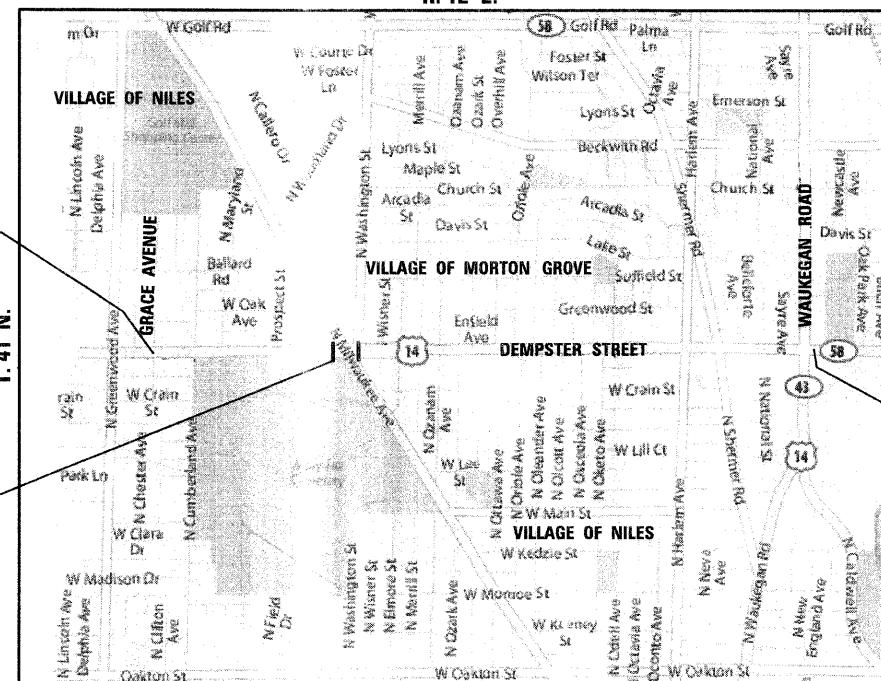
STATE OF ILLINOIS
DEPARTMENT OF TRANSPORTATION
DIVISION OF HIGHWAYS

**PROPOSED
HIGHWAY PLANS**

**FAU 1324 / US 14 (DEMPSTER STREET)
SECTION: 3228 D-Z-Y-RS-1
GRACE AVENUE TO ILL 43 (WAUKEGAN ROAD)
RESURFACING (3P)**

**COOK COUNTY
C-91-057-09**

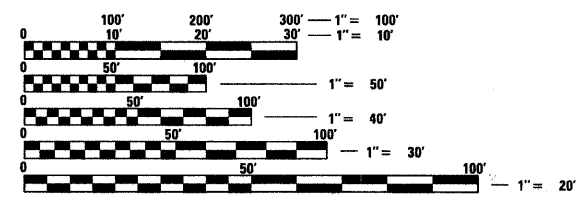
**MAINE TOWNSHIP
R. 12 E.**



**PROJECT BEGINS
STA. 101 + 93**

**OMISSION:
STA. 133 + 82.3 TO
STA. 134 + 81.7**

**PROJECT ENDS
STA. 209 + 14**



FULL SIZE PLANS HAVE BEEN PREPARED USING STANDARD ENGINEERING SCALES. REDUCED SIZED PLANS WILL NOT CONFORM TO STANDARD SCALES. IN MAKING MEASUREMENTS ON REDUCED PLANS, THE ABOVE SCALES MAY BE USED.

**J.U.L.I.E.
JOINT UTILITY LOCATING INFORMATION FOR EXCAVATORS
1-800-892-0123
OR 811**

**GROSS LENGTH OF PROJECT = 10,721 FEET = 2.030 MILES
NET LENGTH OF PROJECT = 10,622 FEET = 2.012 MILES**

STATE OF ILLINOIS
DEPARTMENT OF TRANSPORTATION
DIVISION OF HIGHWAYS

SUBMITTED MARCH 30, 2009

Diana M. O'Keefe
DEPUTY DIRECTOR OF HIGHWAYS, REGION ONE ENGINEER

May 1, 2009
Charles J. Inglesse
ENGINEER OF DESIGN AND ENVIRONMENT

May 1, 2009
Christine M. Reed
DIRECTOR OF HIGHWAYS, CHIEF ENGINEER



Birinder S. Sachdeva March 23, 2009
BIRINDER S. SACHDEVA, P.E. DATE
EXPIRES: 11-30-2009

DISTRICT ONE - PLAN PREP ENGINEER: KEN ENG (847) 705-4247

CONTRACT NO. 60F26

CR & A
CHRISTIAN-ROGE & ASSOCIATES, INC.
ENGINEERS - PLANNERS - SURVEYORS
211 W. WACKER DRIVE CHICAGO, IL. 60606
TELEPHONE: 312-372-2023

**PRINTED BY THE AUTHORITY
OF THE STATE OF ILLINOIS**