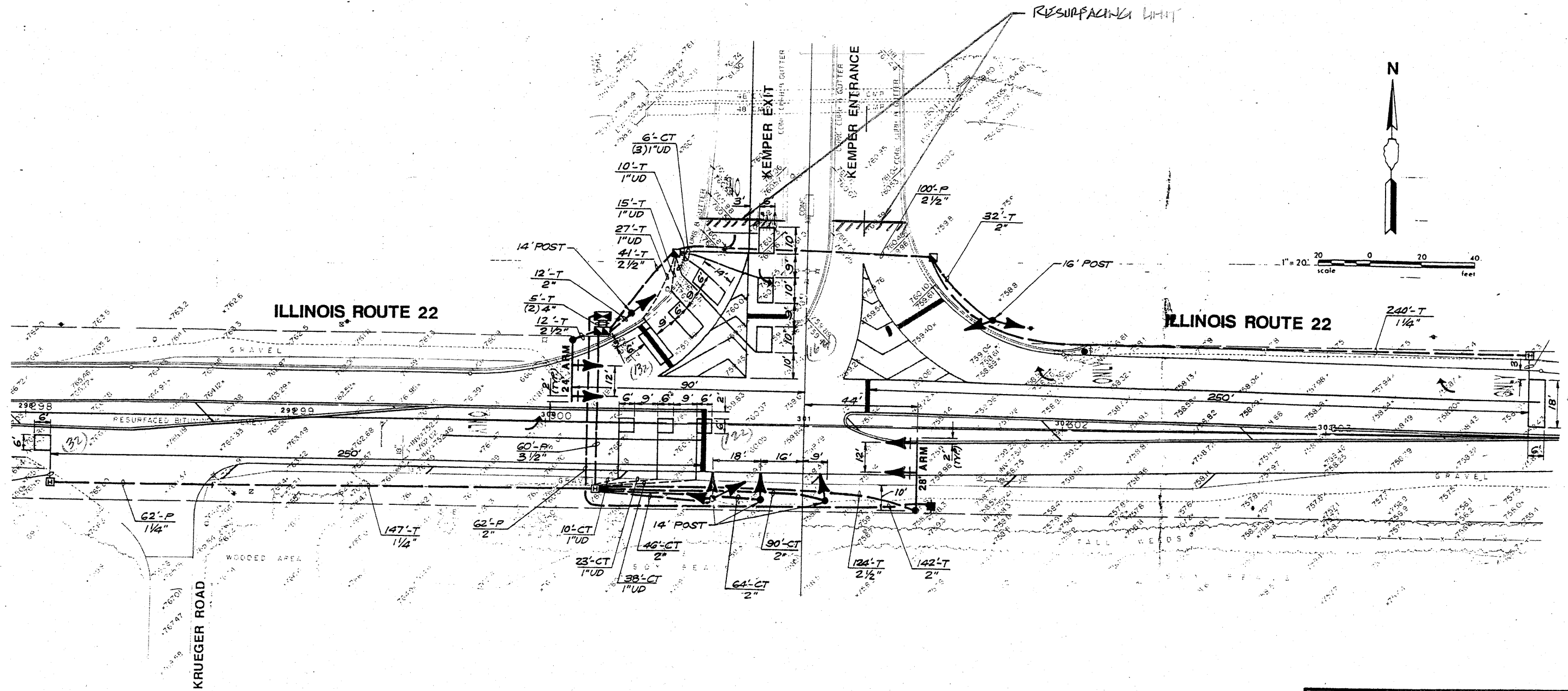


T. & E. SEC.	SECTION	COUNTY	TOTAL SHEETS	SHEET NO.
337	20RS-2	LAKE	20	10
STA.		TO STA.		
FED. ROAD DIST. NO. 7		ILLINOIS		FED. AID PROJECT

Cont. # 60F31



NOTE:
 THIS PLAN IS FOR THE PURPOSE OF REPLACING THE DETECTOR LOOPS ONLY. ALL OTHER INFORMATION SHOWN IS NOT RELATED AND WILL BE DISREGARDED.

REPLACE ALL DETECTOR LOOPS AS SHOWN
 (WITHIN THE RESURFACING LIMITS)

CODE NO.	QUANTITY	UNIT	ITEM
80600600	500	Foot	Detector Loop Replacement

REVISIONS	
NAME	DATE

ILLINOIS DEPARTMENT OF TRANSPORTATION
DETECTOR LOOP REPLACEMENT
 ILL. ROUTE 22 @ KEMPER DRIVE
 SCALE: NONE
 DATE: FEB. 2009
 DRAWN BY: JHE
 DESIGNED BY: JHE
 CHECKED BY: DAD