

STATE OF ILLINOIS
DEPARTMENT OF TRANSPORTATION
DIVISION OF HIGHWAYS

**PROPOSED
HIGHWAY PLANS**

F.A.U. 3510 (NB I-55 EAST FRONTAGE ROAD)
SECTION 29 R-2AC-RS-1
IL 53 TO JOLIET ROAD
RESURFACING

WILL COUNTY
C-91-135-09

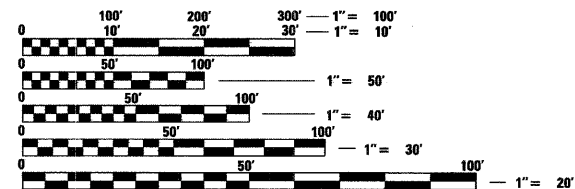
F.A.U. RTE.	SECTION	COUNTY	TOTAL SHEETS	SHEET NO.
3510	29 R-2AC-RS-1	WILL	16	1
FED. ROAD DIST. NO. 1		ILLINOIS	CONTRACT NO. 60F58	

FOR INDEX OF SHEETS, SEE SHEET NO. 2

THESE IMPROVEMENTS ARE LOCATED
WITHIN THE VILLAGE OF BOLINGBROOK

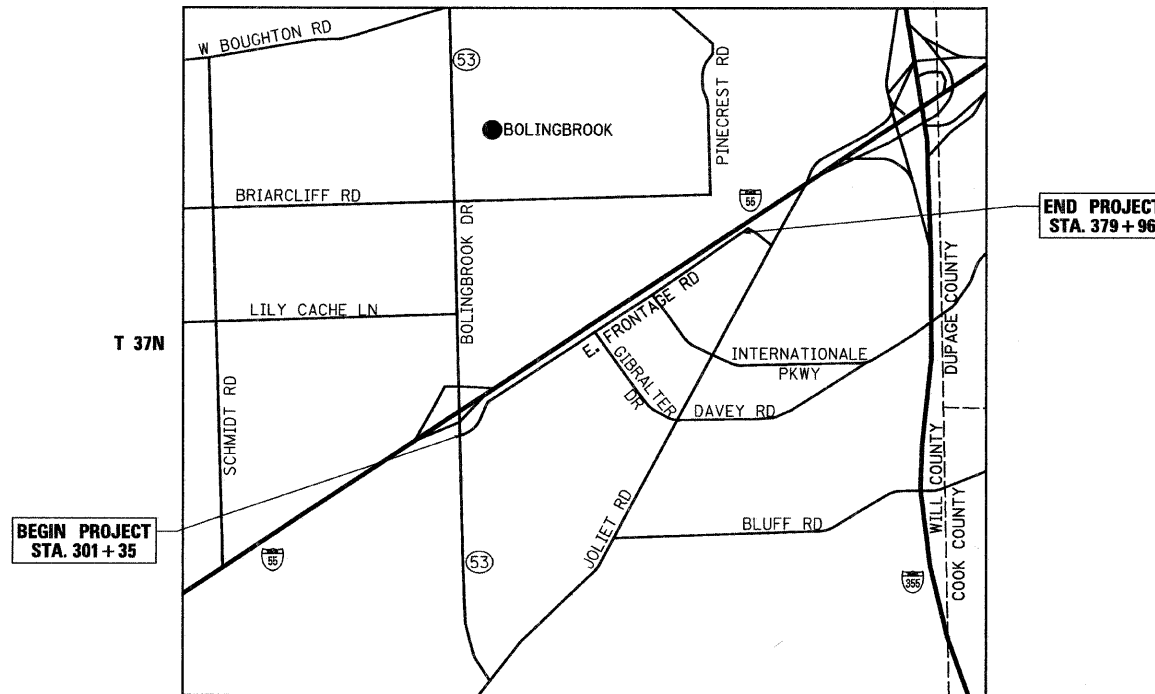
TRAFFIC DATA

2005 ADT - 8,900
POSTED SPEED LIMIT - 45 MPH



FULL SIZE PLANS HAVE BEEN PREPARED USING STANDARD ENGINEERING SCALES. REDUCED SIZED PLANS WILL NOT CONFORM TO STANDARD SCALES. IN MAKING MEASUREMENTS ON REDUCED PLANS, THE ABOVE SCALES MAY BE USED.

J.U.L.I.E.
JOINT UTILITY LOCATION INFORMATION FOR EXCAVATION
1-800-892-0123
OR 811

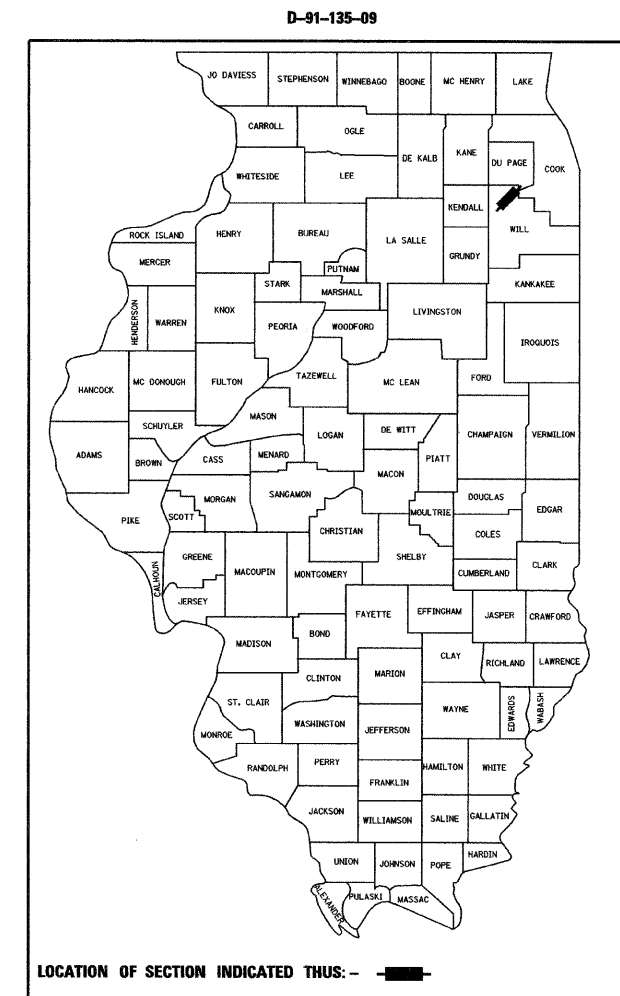


BEGIN PROJECT
STA. 301 + 35

END PROJECT
STA. 379 + 96

DUPAGE TOWNSHIP
LOCATION MAP
1" = 2,000'

GROSS AND NET LENGTH OF PROJECT = 7,861 FT = 1.48 MI.



LOCATION OF SECTION INDICATED THUS: -

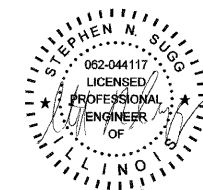
DISTRICT 1 DESIGN PLAN PREPARATION ENGINEER: K. ENG (847)705-4247

Giorba Group, Inc.

DESIGN FIRM
REGISTRATION NUMBER

184-001016

CONSULTING ENGINEERS
SUITE 402, 5507 NORTH CUMBERLAND AVE
CHICAGO, ILLINOIS 60656 :: (773) 775-4009



DATE: 3/24/2009
SEAL EXPIRES: 11/30/2009

STATE OF ILLINOIS
DEPARTMENT OF TRANSPORTATION
DIVISION OF HIGHWAYS

SUBMITTED MARCH 24, 2009

Diane M. O'Keefe DEPUTY DIRECTOR OF HIGHWAYS, REGION ENGINEER

May 1, 2009

Charles J. Ingersoll ENGINEER OF DESIGN AND ENVIRONMENT

May 1, 2009

Christine M. Reed DIRECTOR OF HIGHWAYS, CHIEF ENGINEER

**PRINTED BY THE AUTHORITY
OF THE STATE OF ILLINOIS**

CONTRACT NO. 60F58

INDEX OF SHEETS

SHEET NO DESCRIPTION

- 1 COVER SHEET
- 2 INDEX OF SHEETS, STATE STANDARDS AND GENERAL NOTES
- 3 SUMMARY OF QUANTITIES
- 4 TYPICAL SECTIONS
- 5-7 ROADWAY AND PAVEMENT MARKING PLAN
- 8 DETAILS FOR FRAMES AND LIDS ADJUSTMENT WITH MILLING (BD-8)
- 9 PAVEMENT PATCHING FOR HMA SURFACED PAVEMENT (BD-22)
- 10 CURB AND GUTTER REMOVAL AND REPLACEMENT (BD-24)
- 11 BUTT JOINT AND HMA TAPER DETAILS (BD-32)
- 12 HMA TAPER AT EDGE OF P.C.C. PAVEMENT (BD-33)
- 13 TRAFFIC CONTROL AND PROTECTION FOR SIDE ROADS, INTERSECTIONS, AND DRIVEWAYS (TC-10)
- 14 TYPICAL APPLICATIONS RAISED REFLECTIVE PAVEMENT MARKERS (SNOW PLOW RESISTANT) (TC-11)
- 15 DISTRICT ONE TYPICAL PAVEMENT MARKINGS (TC-13)
- 16 ARTERIAL ROAD INFORMATION SIGN (TC-22)

STATE STANDARDS

- 000001-05 STANDARD SYMBOLS, ABBREVIATIONS, AND PATTERNS
- 420001-07 PAVEMENT JOINTS
- 442201-03 CLASS C AND D PATCHES
- 606201-02 TYPE B GUTTER (INLET, OUTLET & ENTRANCE)
- 606211-03 OUTLETS TYPE 2 FOR TYPE B GUTTER
- 701301-03 LANE CLOSURE, 2L, 2W, SHORT TIME OPERATIONS
- 701306-02 LANE CLOSURE, 2L, 2W, SLOW MOVING OPERATIONS DAY ONLY, FOR SPEEDS ≥ 45 MPH
- 701311-03 LANE CLOSURE, 2L, 2W, MOVING DAY OPERATIONS-DAY ONLY
- 701901-01 TRAFFIC CONTROL DEVICES
- 780001-02 TYPICAL PAVEMENT MARKINGS

GENERAL NOTES

1. BEFORE STARTING ANY EXCAVATION, THE CONTRACTOR SHALL CALL "JULIE" AT 800-892-0123 OR 811 FOR FIELD LOCATIONS OF BURIED ELECTRIC, TELEPHONE, AND GAS FACILITIES. (48 HOUR NOTIFICATION IS REQUIRED)
2. 10 FEET (3 METER) TRANSITIONS SHALL BE USED TO MATCH PROPOSED CURB AND GUTTER AND MEDIAN ITEMS OF WORK TO EXISTING CURB AND GUTTER AND MEDIANS IN THE FIELD UNLESS OTHERWISE SHOWN. THE TRANSITIONS SHALL BE PAID FOR AT THE CONTRACT UNIT PRICE FOR THE PROPOSED ITEMS OF WORK SPECIFIED.
3. THE CONTRACTOR SHALL COORDINATE CONSTRUCTION ACTIVITIES WITH UTILITY COMPANIES.
4. THE CONTRACTOR WILL NOT BE ALLOWED TO SET UP A YARD OR FIELD OFFICE ON STATE PROPERTY WITHOUT WRITTEN PERMISSION FROM THE DEPARTMENT.
5. WHEN ARTIFICIAL LIGHTING IS USED IN NIGHT OPERATIONS THE CONTRACTOR SHALL EXERCISE THE UTMOST PRECAUTIONS IN PREVENTING ADVERSE VISIBILITY TO THE MOTORING PUBLIC AND ADJOINING RESIDENTIAL AREAS.
6. THE FOLLOWING RATES OF APPLICATION HAVE BEEN ASSUMED IN CALCULATING PLAN QUANTITIES:

BITUMINOUS MATERIALS (PRIME COAT)	0.0004 TONS/SQ YD
HOT-MIX ASPHALT SURFACE COURSE	112 LBS/SQ YD/INCH
HOT-MIX ASPHALT BINDER COURSE	112 LBS/SQ YD/INCH
7. THE ENGINEER SHALL CONTACT THE TRAFFIC CONTROL SUPERVISORS AT (847) 705-4470 A MINIMUM OF 72 HOURS PRIOR TO THE START OF WORK.
8. TWO WEEKS PRIOR TO PLACEMENT OF PERMANENT PAVEMENT MARKINGS THE ENGINEER SHALL CONTACT MS. CORA MATHIS, AREA TRAFFIC FIELD ENGINEER, AT (815) 485-6475.
9. WHEN MILLED PAVEMENT IS OPEN TO TRAFFIC THE MAXIMUM GRADE DIFFERENTIAL BETWEEN PASSES OF THE MILLING MACHINE SHALL NOT EXCEED 1 1/2" (40 MM) WHERE THE SPEED LIMIT IS 45 MPH (80 KM/H) OR LESS AND 1" (25 MM) WHERE THE SPEED LIMIT IS GREATER THAN 45 MPH (80 KM/H). WITH WRITTEN APPROVAL FROM THE ENGINEER, A MAXIMUM GRADE DIFFERENTIAL OF 3" (75 MM) MAY BE ALLOWED IF THE EDGE OF THE MILLING IS SLOPED A MINIMUM 3:1 (H:V).
10. BUTT JOINTS WILL BE INSTALLED AT THE END OF ALL RESURFACING (WHERE RESURFACING MEETS EXISTING PAVEMENT). IN ACCORDANCE WITH THE "BUTT JOINT AND HMA TAPER DETAILS" SHEET INCLUDED IN THE PLANS, UNLESS OTHERWISE SPECIFIED.
11. FOR PAVEMENT MARKING, REFER TO DISTRICT ONE TYPICAL MARKINGS FOR DETAILS SHOWN.
12. MATCH EXISTING PAVEMENT MARKINGS AT PROJECT LIMITS.
13. NO OVERNIGHT LANE CLOSURES SHALL BE ALLOWED.
14. ALL PATCHES OPENED ON A PARTICULAR DAY MUST BE FILLED THAT DAY TO THE TOP OF THE MILLED PAVEMENT SURFACE.

FILE NAME = N:\PROJ\3368\3368_05\Design\ProposedPlan\3368_05-02-General_Notes.dgn



Ciorba Group, Inc.
 CONSULTING ENGINEERS
 5507 North Cumberland Avenue, Suite 402
 Chicago, Illinois 60656
 Tel. 773.775.4009 Fax 773.775.4014

USER NAME = ejau	DESIGNED MWR	REVISED -	
	DRAWN MWR	REVISED -	
PLOT SCALE = 1:8000' / IN.	CHECKED WBL	REVISED -	
PLOT DATE = 4/2/2009	DATE 3/31/09	REVISED -	

**STATE OF ILLINOIS
 DEPARTMENT OF TRANSPORTATION**

**NB I-55 EAST FRONTAGE ROAD
 IL 53 TO JOLIET ROAD
 INDEX OF SHEETS, STATE STANDARDS & GENERAL NOTES**

SCALE: SHEET NO. 2 OF 16 SHEETS STA. TO STA.

F.A.U. RTE.	SECTION	COUNTY	TOTAL SHEETS	SHEET NO.
3510	29 R-2AC-RS-1	WILL	16	2
			CONTRACT NO. 60F58	
FED. ROAD DIST. NO. 1 ILLINOIS FED. AID PROJECT				

SUMMARY OF QUANTITIES				URBAN 100% STATE	CONSTRUCTION TYPE CODE
CODE NO.	DESCRIPTION	UNIT	TOTAL QUANTITY	ROADWAY 1000	
20200100	EARTH EXCAVATION	CU YD	120	120	
20201006	GRADING AND SHAPING SHOULDERS	UNIT	145	145	
35800200	AGGREGATE BASE REPAIR	TON	160	160	
40600200	BITUMINOUS MATERIALS (PRIME COAT)	TON	18	18	
40600300	AGGREGATE (PRIME COAT)	TON	85	85	
40600400	MIXTURE FOR CRACKS, JOINTS, AND FLANGEWAYS	TON	22	22	
40600525	LEVELING BINDER (HAND METHOD), N50	TON	20	20	
40600635	LEVELING BINDER (MACHINE METHOD), N70	TON	290	290	
40600895	CONSTRUCTING TEST STRIP	EACH	3	3	
40600982	HOT-MIX ASPHALT SURFACE REMOVAL - BUTT JOINT	SQ YD	60	60	
40600985	PORTLAND CEMENT CONCRETE SURFACE REMOVAL - BUTT JOINT	SQ YD	350	350	
40600990	TEMPORARY RAMP	SQ YD	90	90	
40603085	HOT-MIX ASPHALT BINDER COURSE, IL-19.0, N70	TON	2,110	2,110	
40603340	HOT-MIX ASPHALT SURFACE COURSE, MIX "D", N70	TON	1,830	1,830	
44000198	HOT-MIX ASPHALT SURFACE REMOVAL, VARIABLE DEPTH	SQ YD	16,200	16,200	
44000400	GUTTER REMOVAL	FOOT	600	600	
44002470	GUTTER INLET REMOVAL	EACH	1	1	
44002500	GUTTER OUTLET REMOVAL	EACH	2	2	
44201705	CLASS D PATCHES, TYPE II, 5 INCH	SQ YD	140	140	
44201709	CLASS D PATCHES, TYPE III, 5 INCH	SQ YD	170	170	
44201711	CLASS D PATCHES, TYPE IV, 5 INCH	SQ YD	780	780	
44201753	CLASS D PATCHES, TYPE II, 9 INCH	SQ YD	1,500	1,500	
44201757	CLASS D PATCHES, TYPE III, 9 INCH	SQ YD	250	250	
48102100	AGGREGATE WEDGE SHOULDER, TYPE B	TON	400	400	

• DENOTES SPECIALTY ITEM

SUMMARY OF QUANTITIES				URBAN 100% STATE	CONSTRUCTION TYPE CODE
CODE NO.	DESCRIPTION	UNIT	TOTAL QUANTITY	ROADWAY 1000	
60300310	FRAMES AND LIDS TO BE ADJUSTED (SPECIAL)	EACH	2	2	
60405900	GRATES AND COVERS, TYPE 2B	EACH	2	2	
60602800	CONCRETE GUTTER, TYPE B	FOOT	600	600	
60603300	GUTTER OUTLET	EACH	2	2	
60603450	GUTTER INLET (SPECIAL)	EACH	1	1	
67000400	ENGINEER'S FIELD OFFICE, TYPE A	CAL MO	6	6	
67100100	MOBILIZATION	L SUM	1	1	
70100460	TRAFFIC CONTROL AND PROTECTION, STANDARD 701306	L SUM	1	1	
70300100	SHORT-TERM PAVEMENT MARKING	FOOT	786	786	
• 70300220	TEMPORARY PAVEMENT MARKING - LINE 4"	FOOT	7,199	7,199	
• 70300240	TEMPORARY PAVEMENT MARKING - LINE 6"	FOOT	117	117	
• 70300280	TEMPORARY PAVEMENT MARKING - LINE 24"	FOOT	231	231	
70301000	WORK ZONE PAVEMENT MARKING REMOVAL	SQ FT	6,170	6,170	
• 78000200	THERMOPLASTIC PAVEMENT MARKING - LINE 4"	FOOT	17,850	17,850	
• 78000400	THERMOPLASTIC PAVEMENT MARKING - LINE 6"	FOOT	40	40	
• 78000650	THERMOPLASTIC PAVEMENT MARKING - LINE 24"	FOOT	100	100	
• 78100100	RAISED REFLECTIVE PAVEMENT MARKER	EACH	110	110	
78300200	RAISED REFLECTIVE PAVEMENT MARKER REMOVAL	EACH	65	65	
X0322256	TEMPORARY INFORMATION SIGNING	SQ FT	52	52	
X4400100	PORTLAND CEMENT CONCRETE REMOVAL (VARIABLE DEPTH)	SQ YD	2,460	2,460	
X4421000	PARTIAL DEPTH PATCHING	TON	110	110	
X4422030	PARTIAL DEPTH REMOVAL 3"	SQ YD	620	620	
Z0018500	DRAINAGE STRUCTURES TO BE CLEANED	EACH	5	5	

FILE NAME = N:\PROJ\3368\3368.dgn



Ciorba Group, Inc.
CONSULTING ENGINEERS
5507 North Cumberland Avenue, Suite 402
Chicago, Illinois 60658
Tel. 773.775.4009 Fax 773.775.4014

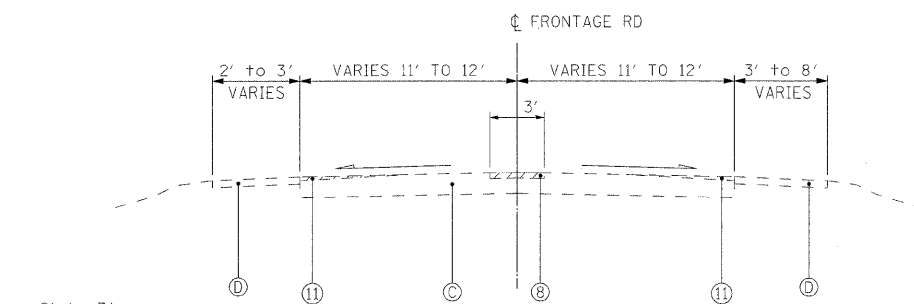
USER NAME = a1au	DESIGNED MWR	REVISED -
	DRAWN MWR	REVISED -
PLOT SCALE = 1,0000' / IN.	CHECKED WBL	REVISED -
PLOT DATE = 4/2/2009	DATE 3/31/09	REVISED -

STATE OF ILLINOIS
DEPARTMENT OF TRANSPORTATION

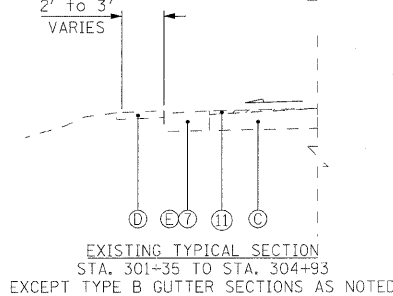
NB I-55 EAST FRONTAGE ROAD
IL 53 TO JOLIET ROAD
SUMMARY OF QUANTITIES

SCALE: SHEET NO. 3 OF 16 SHEETS STA. TO STA.

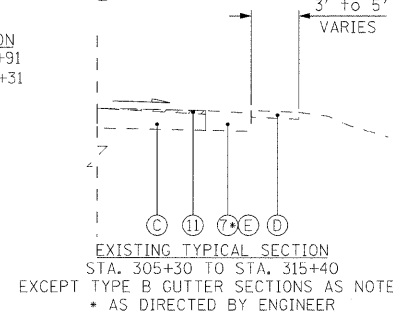
F.A.U. RTE.	SECTION	COUNTY	TOTAL SHEETS	SHEET NO.
3510	29 R-2AC-RS-1	WILL	16	3
FED. ROAD DIST. NO. 1 ILLINOIS FED. AID PROJECT			CONTRACT NO. 60F58	



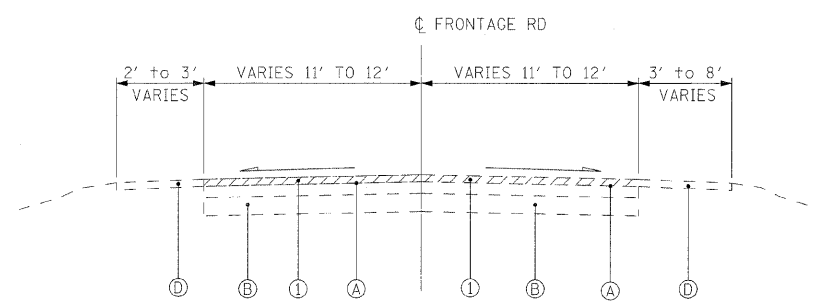
EXISTING TYPICAL SECTION
STA. 301+35 TO STA. 318+91
STA. 337+45 TO STA. 338+31



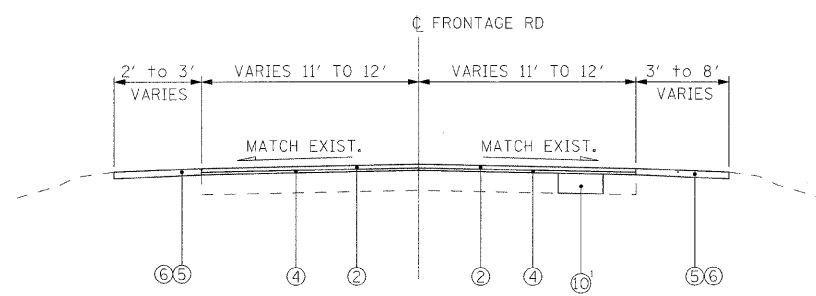
EXISTING TYPICAL SECTION
STA. 301+35 TO STA. 304+93
EXCEPT TYPE B GUTTER SECTIONS AS NOTED



EXISTING TYPICAL SECTION
STA. 305+30 TO STA. 315+40
EXCEPT TYPE B GUTTER SECTIONS AS NOTED
AS DIRECTED BY ENGINEER

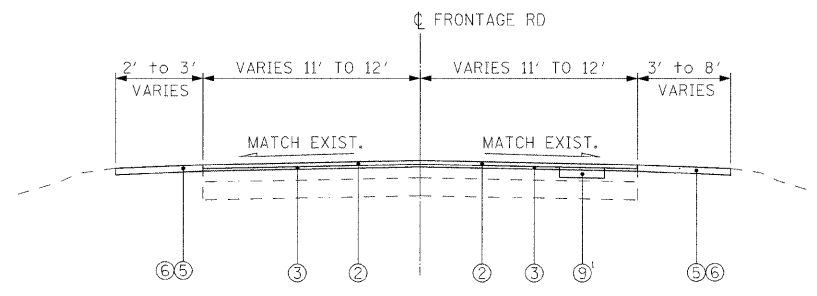


EXISTING TYPICAL SECTION
STA. 318+91 TO STA. 337+45
STA. 338+31 TO STA. 379+96

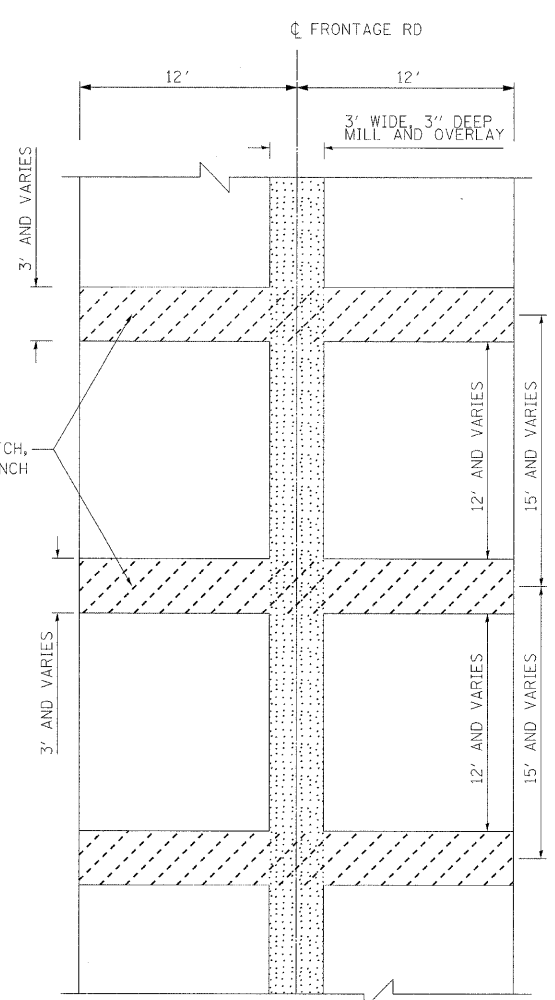


PROPOSED TYPICAL SECTION
STA. 301+35 TO STA. 318+91
STA. 337+45 TO STA. 338+31

AGGREGATE SHOULDER BEHIND CURB & GUTTER SHALL ALSO BE 5 & 6



PROPOSED TYPICAL SECTION
STA. 318+91 TO STA. 337+45
STA. 338+31 TO STA. 379+96



TYPICAL PATCHING
STA. 301+35 TO STA. 319+91
STA. 337+45 TO STA. 338+31
ADDITIONAL PATCHING SHALL BE MARKED IN THE FIELD BY THE ENGINEER.

EXISTING CONDITIONS:

- (A) HOT-MIX ASPHALT SURFACE AND BINDER COURSE, 6" AND VARIES
- (B) AGGREGATE BASE COURSE
- (C) PORTLAND CEMENT CONCRETE PAVEMENT
- (D) AGGREGATE SHOULDER
- (E) TYPE B GUTTER

PROPOSED IMPROVEMENTS:

- (1) HOT-MIX ASPHALT SURFACE REMOVAL, VARIABLE DEPTH
- (2) HOT-MIX ASPHALT SURFACE COURSE, MIX "D", N70, 1 1/2"
- (3) HOT-MIX ASPHALT BINDER COURSE, IL-19.0, N70, 2 1/4"
- (4) LEVELING BINDER (MACHINE METHOD), N70, 1"
- (5) AGGREGATE WEDGE SHOULDER, TYPE B
- (6) GRADING AND SHAPING SHOULDERS
- (7) GUTTER REMOVAL
PROPOSED TYPE B GUTTER
- (8) MILL AND OVERLAY, HOT-MIX ASPHALT BINDER COURSE, IL-19.0, N50, 3"
- (9) CLASS D PATCHES, 5" (DETERMINED BY ENGINEER IN FIELD)¹
- (10) CLASS D PATCHES, 9" (DETERMINED BY ENGINEER IN FIELD)¹
- (11) PORTLAND CEMENT CONCRETE REMOVAL (VARIABLE DEPTH) SEE SHEET 12

* THE CONTRACTOR SHALL MILL FIRST BEFORE PATCHING

¹ QUANTITIES FOR EARTH EXCAVATION AND AGGREGATE BASE REPAIR HAVE BEEN INCLUDED FOR SUBGRADE FAILURES BELOW THE CLASS D PATCHES

A QUANTITY FOR LEVELING BINDER (HAND METHOD) HAS BEEN PROVIDED FOR USE AT ENTRANCES, AROUND HAND HOLES, PRIVATE UTILITY STRUCTURE FRAMES AND ANY OTHER STRUCTURE FRAMES THAT ARE NOT ABLE TO BE LOWERED UNDER THE ITEM "FRAMES AND LIDS TO BE ADJUSTED (SPECIAL)" AFTER GRINDING OF THE EXISTING PAVEMENT.

HOT-MIX ASPHALT MIXTURE REQUIREMENTS CHART

OPERATIONS	MIXTURE TYPE	AC TYPE	PERCENT AIR VOIDS
ROADWAY RESURFACING	HOT-MIX ASPHALT SURFACE COURSE, MIX "D", N70 (IL-9.5MM)	PG 64-22	4% @ 70 GYR
	HOT-MIX ASPHALT BINDER COURSE, IL-19.0, N70	PG 64-22 *	4% @ 70 GYR
	LEVELING BINDER (MACHINE METHOD), N70 (IL 9.5 MM)	PG 64-22 *	4% @ 70 GYR
MAINTENANCE OF TRAFFIC	LEVELING BINDER (HAND METHOD), N50	PG 64-22 *	4% @ 50 GYR
PAVEMENT PATCHING	CLASS D PATCHES, 5" (HMA BINDER IL-19 MM), N50	PG 64-22 *	4% @ 70 GYR
PAVEMENT PATCHING	CLASS D PATCHES, 9" (HMA BINDER IL-19 MM), N50	PG 64-22 *	4% @ 70 GYR
PARTIAL DEPTH PATCHING, 3"	CLASS D PATCHES, 3" (HMA BINDER IL-19 MM), N50	PG 64-22	4% @ 70 GYR

THE UNIT WEIGHT USED TO CALCULATE ALL HMA SURFACE MIXTURE QUANTITIES IS 112 LBS/SQ YD/IN.

* WHEN RAP EXCEEDS 20%, THE NEW ASPHALT BINDER IN THE MIX SHALL BE PG 58-22.

FILE NAME = n:\p\proj\33488\33488.dgn

Ciorba Group, Inc.
CONSULTING ENGINEERS
5607 North Cumberland Avenue, Suite 402
Chicago, Illinois 60656
Tel. 773.775.4009 Fax 773.775.4014

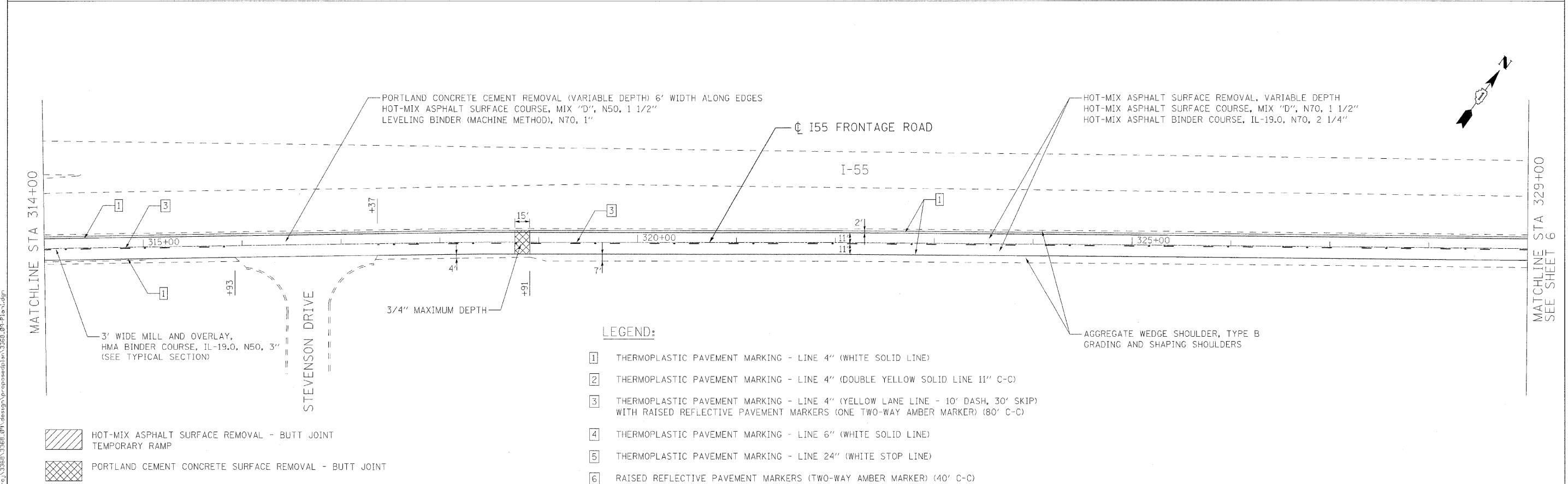
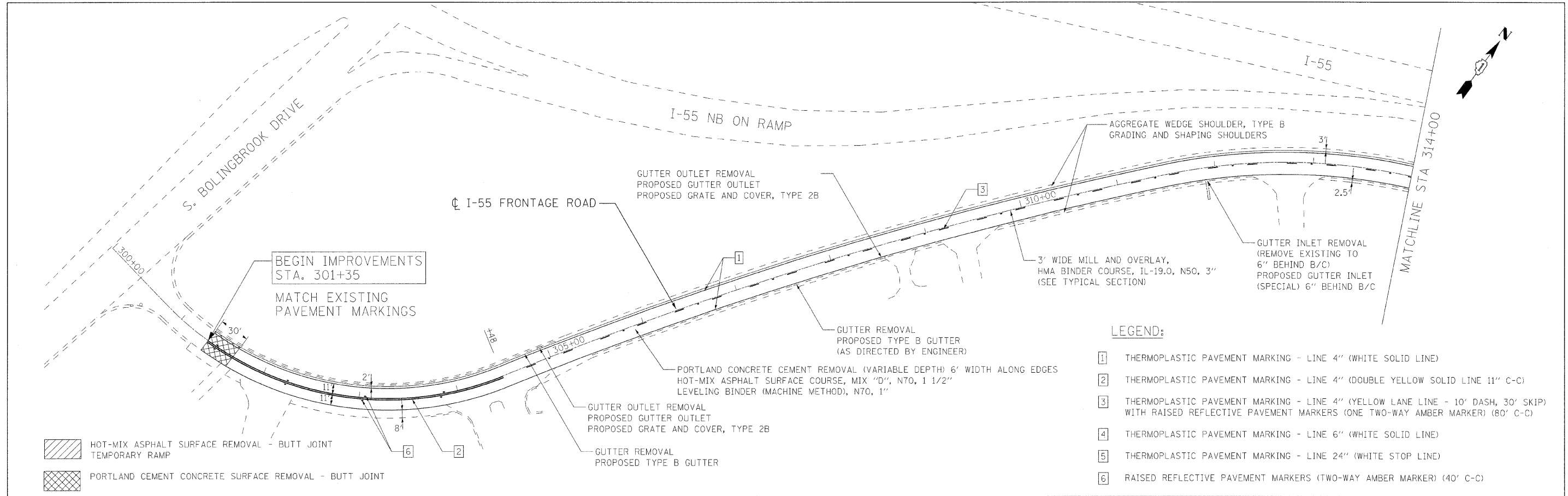
USER NAME = mready	DESIGNED MWR	REVISED -
PLOT SCALE = 5.0000' / IN.	DRAWN MWR	REVISED -
PLOT DATE = 3/31/2009	CHECKED WBL	REVISED -
	DATE 3/31/09	REVISED -

**STATE OF ILLINOIS
DEPARTMENT OF TRANSPORTATION**

**NB I-55 EAST FRONTAGE ROAD
IL 53 TO JOLIET ROAD
TYPICAL SECTIONS**

SCALE: N.T.S. SHEET NO. 4 OF 16 SHEETS STA. TO STA.

F.A.U. RTE.	SECTION	COUNTY	TOTAL SHEETS	SHEET NO.
3510	29 R-2AC-RS-1	WILL	16	4
FED. ROAD DIST. NO. 1 ILLINOIS FED. AID PROJECT			CONTRACT NO. 60F58	



FILE NAME = n:\p\3385\3385.dgn

Ciorba Group, Inc.
 CONSULTING ENGINEERS
 5507 North Cumberland Avenue, Suite 402
 Chicago, Illinois 60658
 Tel. 773.775.4009 Fax 773.775.4014

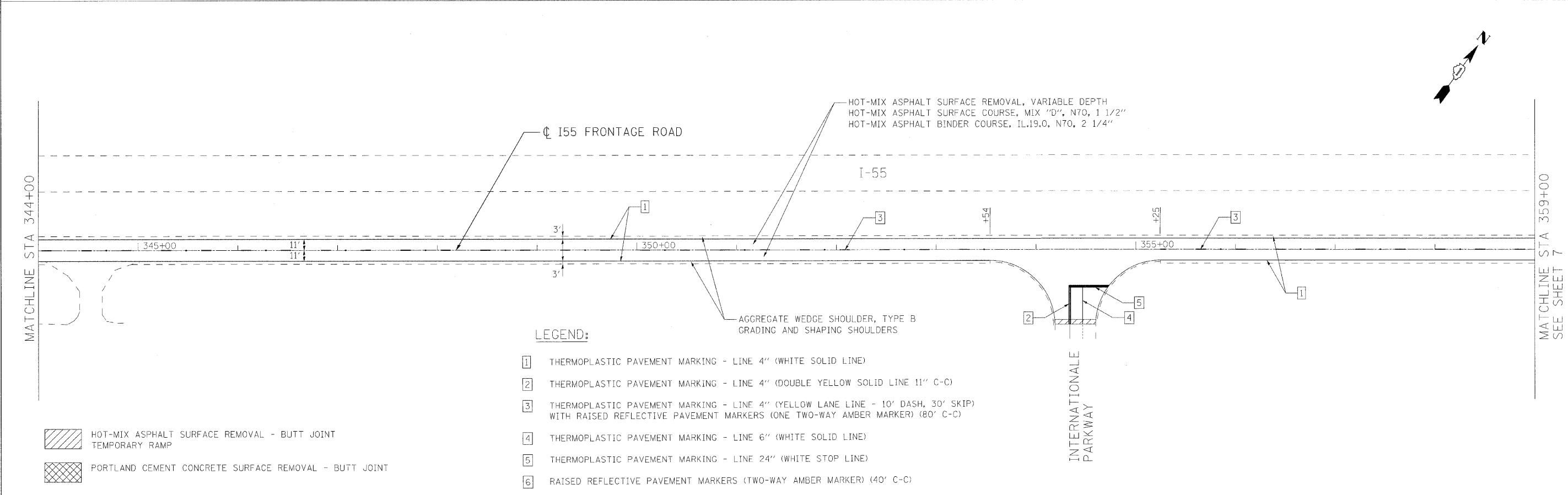
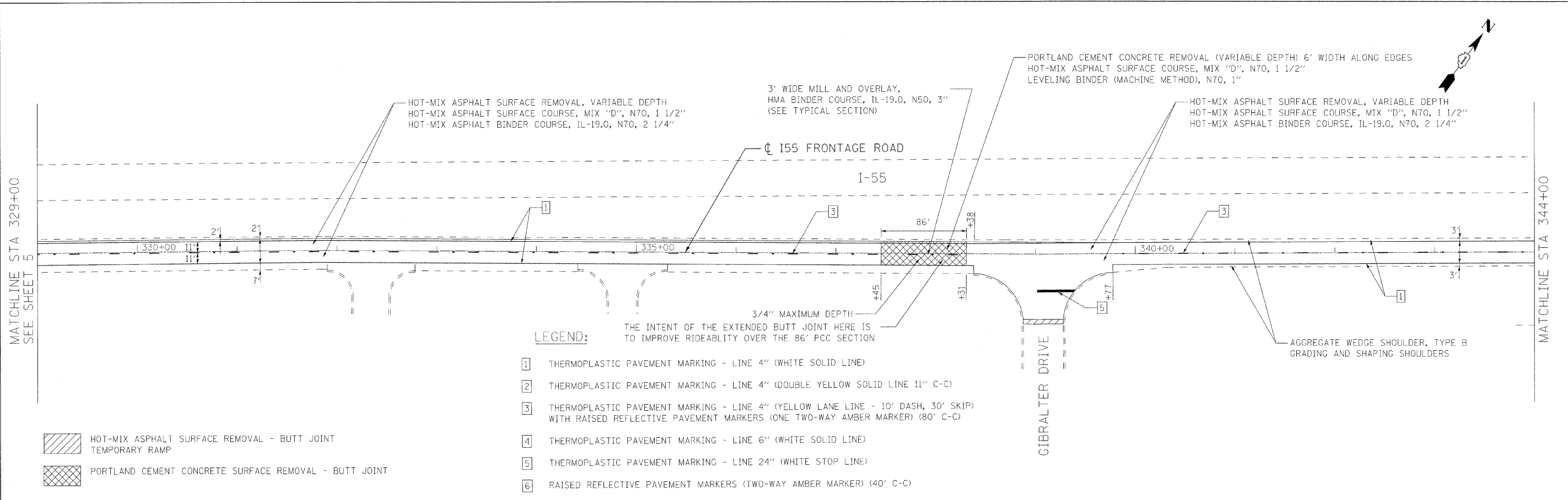
USER NAME = alou	DESIGNED - EPS	REVISED -
	DRAWN - RJR	REVISED -
PLOT SCALE = 50.0000' / IN.	CHECKED - WBL	REVISED -
PLOT DATE = 4/2/2009	DATE - 3/31/09	REVISED -

**STATE OF ILLINOIS
 DEPARTMENT OF TRANSPORTATION**

**NB I-55 EAST FRONTAGE ROAD
 IL 53 TO JOLIET ROAD
 PROPOSED ROADWAY AND PAVEMENT MARKING PLAN**

SCALE: 1" = 50' SHEET NO. 5 OF 16 SHEETS STA. 300+00 TO STA. 329+00

F.A.U. RTE.	SECTION	COUNTY	TOTAL SHEETS	SHEET NO.
3510	29 R-2AC-RS-1	WILL	16	5
CONTRACT NO. 60F58			FED. ROAD DIST. NO. 1 ILLINOIS FED. AID PROJECT	



Ciorba Group, Inc.
 CONSULTING ENGINEERS
 5507 North Cumberland Avenue, Suite 402
 Chicago, Illinois 60658
 Tel. 773.775.4009 Fax 773.775.4014

USER NAME = mready	DESIGNED - EPS	REVISED -
PLOT SCALE = 50.0000' / IN.	DRAWN - RJR	REVISED -
PLOT DATE = 3/31/2009	CHECKED - WBL	REVISED -
	DATE - 3/31/09	REVISED -

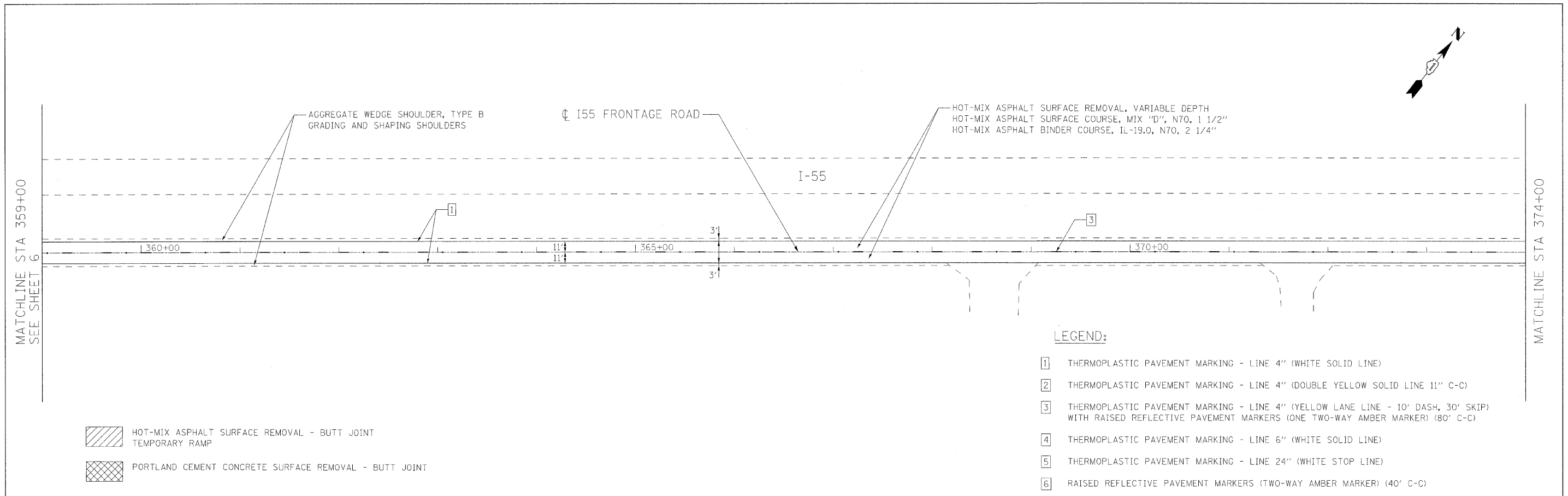
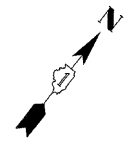
**STATE OF ILLINOIS
 DEPARTMENT OF TRANSPORTATION**

**NB I-55 EAST FRONTAGE ROAD
 IL 53 TO JOLIET ROAD
 PROPOSED ROADWAY AND PAVEMENT MARKING PLAN**

SCALE: 1" = 50' SHEET NO. 6 OF 16 SHEETS STA. 329+00 TO STA. 359+00

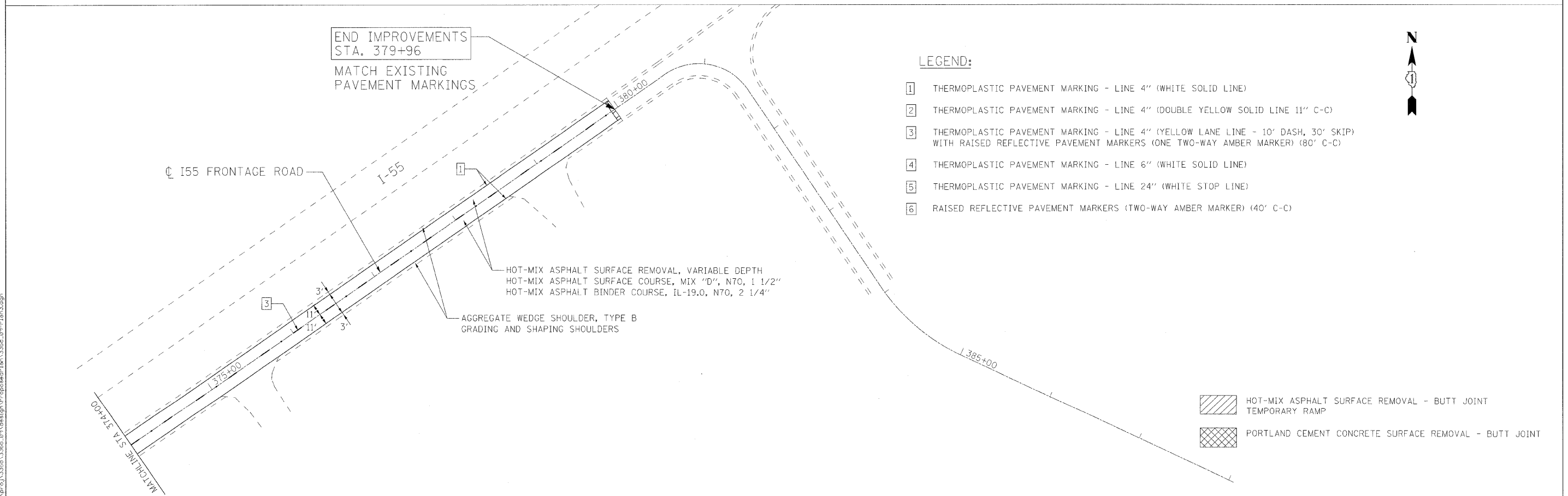
F.A.I.L. RTE.	SECTION	COUNTY	TOTAL SHEETS	SHEET NO.
3510	29 R-2AC-RS-1	WILL	16	6
CONTRACT NO. 60F58				
FED. ROAD DIST. NO. 1 ILLINOIS FED. AID PROJECT				

FILE NAME = m:\p\proj\33260\33260.dgn



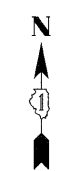
- HOT-MIX ASPHALT SURFACE REMOVAL - BUTT JOINT
TEMPORARY RAMP
- PORTLAND CEMENT CONCRETE SURFACE REMOVAL - BUTT JOINT

- LEGEND:**
- 1 THERMOPLASTIC PAVEMENT MARKING - LINE 4" (WHITE SOLID LINE)
 - 2 THERMOPLASTIC PAVEMENT MARKING - LINE 4" (DOUBLE YELLOW SOLID LINE 11" C-C)
 - 3 THERMOPLASTIC PAVEMENT MARKING - LINE 4" (YELLOW LANE LINE - 10' DASH, 30' SKIP) WITH RAISED REFLECTIVE PAVEMENT MARKERS (ONE TWO-WAY AMBER MARKER) (80' C-C)
 - 4 THERMOPLASTIC PAVEMENT MARKING - LINE 6" (WHITE SOLID LINE)
 - 5 THERMOPLASTIC PAVEMENT MARKING - LINE 24" (WHITE STOP LINE)
 - 6 RAISED REFLECTIVE PAVEMENT MARKERS (TWO-WAY AMBER MARKER) (40' C-C)



- LEGEND:**
- 1 THERMOPLASTIC PAVEMENT MARKING - LINE 4" (WHITE SOLID LINE)
 - 2 THERMOPLASTIC PAVEMENT MARKING - LINE 4" (DOUBLE YELLOW SOLID LINE 11" C-C)
 - 3 THERMOPLASTIC PAVEMENT MARKING - LINE 4" (YELLOW LANE LINE - 10' DASH, 30' SKIP) WITH RAISED REFLECTIVE PAVEMENT MARKERS (ONE TWO-WAY AMBER MARKER) (80' C-C)
 - 4 THERMOPLASTIC PAVEMENT MARKING - LINE 6" (WHITE SOLID LINE)
 - 5 THERMOPLASTIC PAVEMENT MARKING - LINE 24" (WHITE STOP LINE)
 - 6 RAISED REFLECTIVE PAVEMENT MARKERS (TWO-WAY AMBER MARKER) (40' C-C)

- HOT-MIX ASPHALT SURFACE REMOVAL - BUTT JOINT
TEMPORARY RAMP
- PORTLAND CEMENT CONCRETE SURFACE REMOVAL - BUTT JOINT



FILE NAME = m:\p\proj\3366\3366.dgn\design\p\proposedPlan\3366_09-plm3.dgn

Ciorba Group, Inc.
CONSULTING ENGINEERS
5507 North Cumberland Avenue, Suite 402
Chicago, Illinois 60656
Tel. 773.775.4009 Fax 773.775.4014

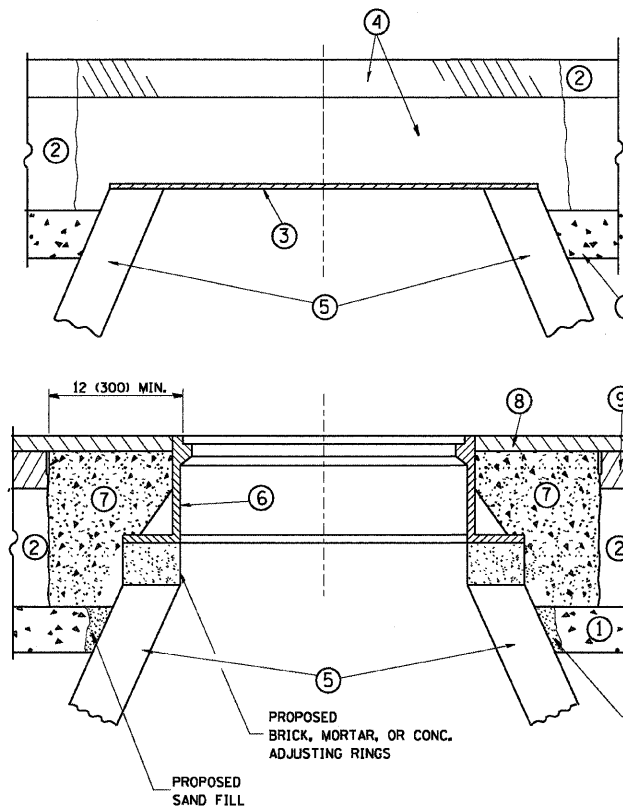
USER NAME = mready	DESIGNED - EPS	REVISED -
PLOT SCALE = 50.0000' / IN.	DRAWN - RJR	REVISED -
PLOT DATE = 3/31/2009	CHECKED - WBL	REVISED -
	DATE - 3/31/09	REVISED -

**STATE OF ILLINOIS
DEPARTMENT OF TRANSPORTATION**

**NB I-55 EAST FRONTAGE ROAD
IL 53 TO JOLIET ROAD
PROPOSED ROADWAY AND PAVEMENT MARKING PLAN**

SCALE: 1" = 50' SHEET NO. 7 OF 16 SHEETS STA. 359+00 TO STA. 388+00

F.A.I. RTE.	SECTION	COUNTY	TOTAL SHEETS	SHEET NO.
3510	29 R-2AC-RS-1	WILL	16	7
FED. ROAD DIST. NO. 1 ILLINOIS FED. AID PROJECT			CONTRACT NO. 60F58	



CONSTRUCTION PROCEDURES

STAGE 1 (BEFORE PAVEMENT MILLING)

- A) REMOVE A MINIMUM OF 12 (300) OF THE PAVEMENT FROM AROUND THE STRUCTURE.
- B) REMOVE THE EXISTING FRAME AND LID FROM THE STRUCTURE.
- C) COVER THE STRUCTURE OPENING WITH A 36 (900) DIAMETER METAL PLATE.
- D) BACKFILL WITH CRUSHED STONE AND A MINIMUM 1/2 (40) THICK HMA SURFACE MIX APPROVED BY THE ENGINEER.

STAGE 2 (AFTER PAVEMENT MILLING)

- A) REMOVE THE HMA SURFACE MIX AND CRUSHED STONE.
- B) INSTALL THE FRAME AND LID; ADJUST THE FRAME TO ITS FINAL SURFACE ELEVATION.
- C) THE SURROUNDING SPACE SHALL BE FILLED WITH CLASS S1 CONCRETE, OR HMA SURFACE COURSE OR HMA BINDER COURSE TO THE ELEVATION OF THE SURFACE OF THE EXISTING BASE COURSE OR THE BINDER COURSE.

THE PROCEDURE EXPLAINED ABOVE SHALL CONFORM TO THE APPLICABLE PORTIONS OF SECTIONS 353, 406, 602, AND 603 OF THE STANDARD SPECIFICATIONS.

LEGEND

- ① SUB-BASE GRANULAR MATERIAL
- ② EXISTING PAVEMENT
- ③ 36 (900) DIAMETER METAL PLATE
- ④ PROPOSED CRUSHED STONE AND HMA SURFACE MIX
- ⑤ EXISTING STRUCTURE
- ⑥ FRAME AND LID (SEE NOTES)
- ⑦ CLASS S1 CONCRETE, HMA SURFACE COURSE OR HMA BINDER COURSE
- ⑧ PROPOSED HMA SURFACE COURSE
- ⑨ PROPOSED HMA BINDER COURSE

LOCATION OF STRUCTURES:

THE CONTRACTOR WILL BE REQUIRED TO KEEP A RECORD OF THE LOCATIONS OF THE BURIED STRUCTURES ACCORDING TO THE STATION AND DISTANCE LEFT OR RIGHT OF THE CENTERLINE OF PAVEMENT. UPON COMPLETION OF THE WORK, THE CONTRACTOR WILL DELIVER THE RECORD TO THE ENGINEER.

BASIS OF PAYMENT: THIS WORK WILL BE PAID FOR AT THE CONTRACT UNIT PRICE PER EACH FOR "FRAMES AND LIDS TO BE ADJUSTED, SPECIAL"
NEW FRAMES AND LIDS, WHEN SPECIFIED, WILL BE PAID FOR SEPARATELY.

NOTES:

EXISTING BROKEN FRAMES AND LIDS SHALL BE REMOVED AND DISPOSED OF BY THE CONTRACTOR AND SHALL BE REPLACED AS DIRECTED BY THE ENGINEER. REPLACEMENT FRAMES AND LIDS WILL BE PAID FOR IN ACCORDANCE WITH ARTICLE 109.04 OF THE STANDARD SPECIFICATIONS UNLESS A SEPARATE PAY ITEM HAS BEEN PROVIDED.

IF THE EXISTING LIDS ARE OPEN, THE FRAME WILL BE ADJUSTED TO THE ELEVATION OF THE MILLED PAVEMENT SURFACE PRIOR TO THE MILLING OPERATION. THE FRAME WILL NOT BE REMOVED AND COVERED BY THE METAL PLATE.

CITY OF CHICAGO CASTINGS ARE THE PROPERTY OF THE CITY AND THE CONTRACTOR SHALL NOTIFY THE CITY FOR REMOVAL AND DISPOSITION OF THE CASTINGS.

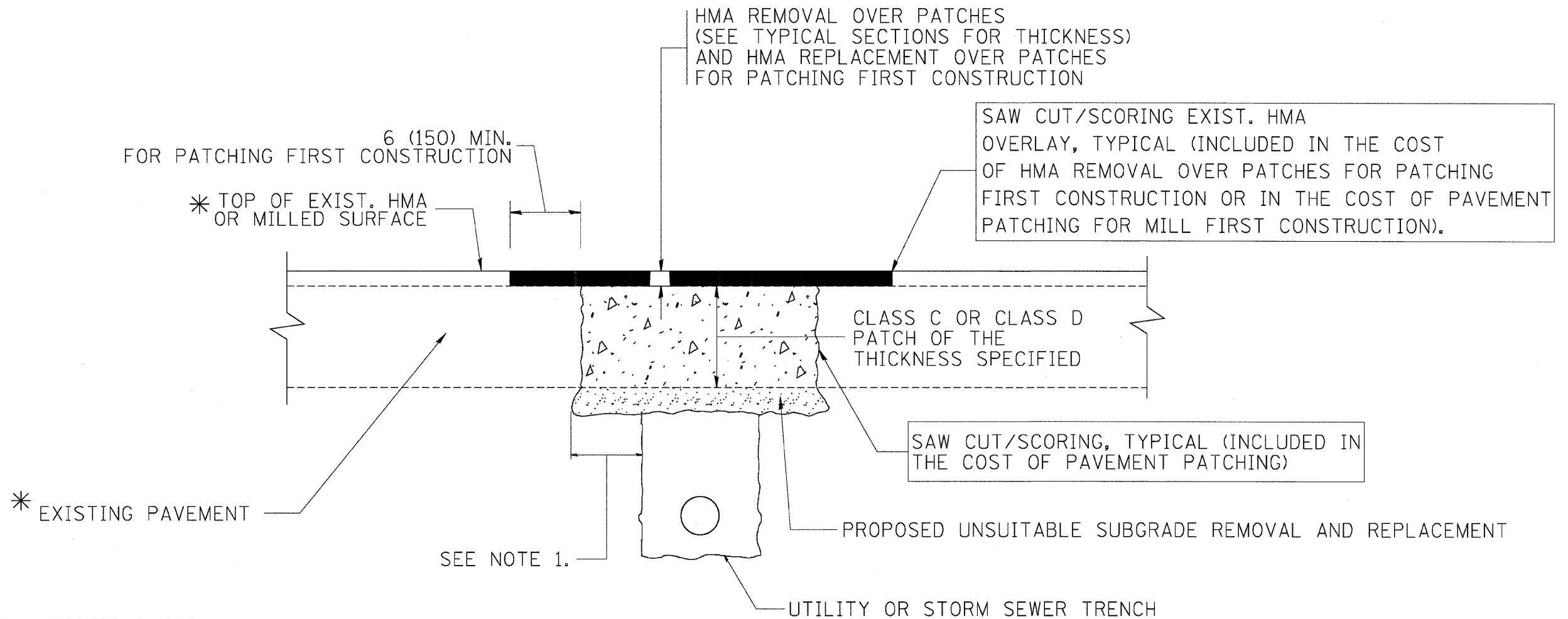
THE METAL PLATE USED TO COVER THE STRUCTURE SHALL REMAIN THE PROPERTY OF THE CONTRACTOR.

WHEN STRUCTURES ARE TO BE ADJUSTED OR RECONSTRUCTED, THE LOWERING AND RAISING OF THE FRAMES AND LIDS WILL NOT BE PAID FOR SEPARATELY BUT WILL BE INCLUDED IN THE COST OF THE CORRESPONDING PAY ITEM.

DETAILS FOR FRAMES AND LIDS ADJUSTMENT WITH MILLING

ALL DIMENSIONS ARE IN INCHES (MILLIMETERS) UNLESS OTHERWISE SHOWN

FILE NAME = W:\distatd\22x34\bd88.dgn	USER NAME = geglienobt	DESIGNED - R. SHAH	REVISED - R. SHAH 03-10-95	STATE OF ILLINOIS DEPARTMENT OF TRANSPORTATION	DETAILS FOR FRAMES AND LIDS ADJUSTMENT WITH MILLING		F.A.U. RTE.	SECTION	COUNTY	TOTAL SHEETS	SHEET NO.	
	PLOT SCALE = 50.0000' / IN.	DRAWN -	REVISED - A. ABBAS 03-21-97		SCALE: NONE	SHEET NO. 1 OF 1 SHEETS	STA.	3510	29 R-2AC-RS-1	WILL	16	8
	PLOT DATE = 1/4/2000	CHECKED -	REVISED - R. WIEDEMAN 05-14-04					BD600-03 (BD-8)		CONTRACT NO. 60F58		
		DATE - 10-25-94	REVISED - R. BORO 01-01-07					FED. ROAD DIST. NO. 1 ILLINOIS FED. AID PROJECT				



* SEE TYPICAL SECTIONS FOR THICKNESS AND MATERIALS

NOTES:

1. THE WIDTH OF THE FULL DEPTH PATCH OVER A TRENCH SHALL BE 12 (300) WIDER ON EACH SIDE OF THE TRENCH.
2. FOR METHOD OF MEASUREMENT AND BASIS OF PAYMENT, SEE RECURRING SPECIAL PROVISION "PATCHING WITH HOT-MIX ASPHALT OVERLAY REMOVAL".

SEQUENCE OF CONSTRUCTION (PATCHING FIRST)

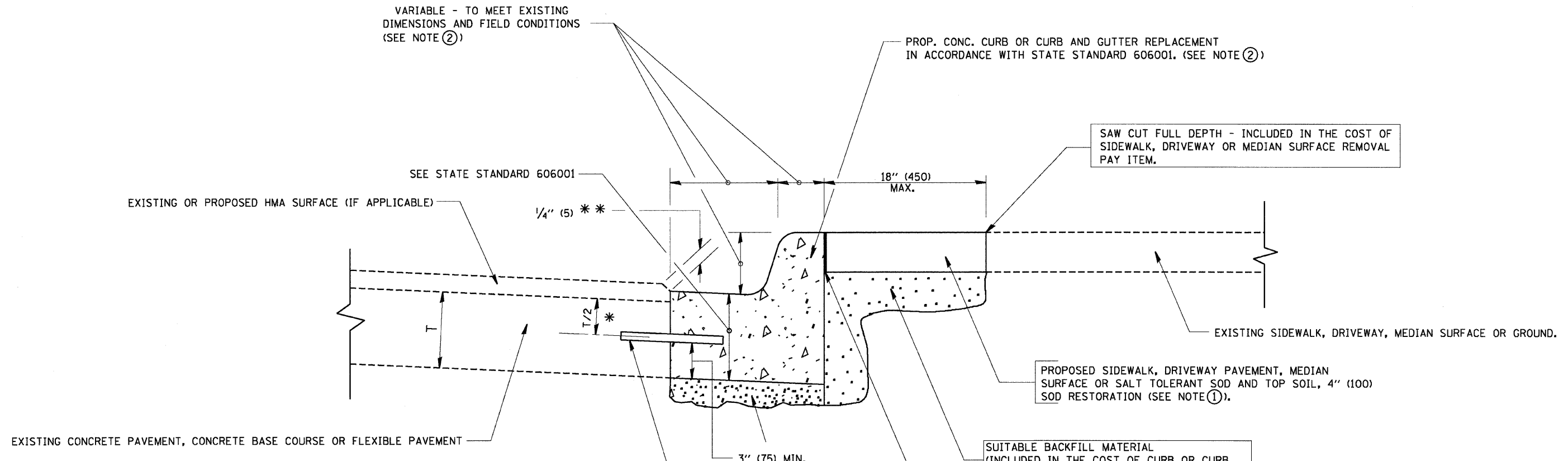
1. REMOVE THE EXISTING HMA MATERIAL OVER THE AREA TO BE PATCHED.
2. REMOVE AND REPLACE WITH CLASS C OR D PATCH.
3. REPLACE HMA MATERIAL OVER THE AREA TO BE PATCHED.

SEQUENCE OF CONSTRUCTION (MILLING FIRST)

1. MILL HMA FIRST IF THERE IS AT LEAST 4 1/2 INCHES OR MORE OF HMA MATERIAL ON TOP OF THE EXISTING PAVEMENT OR IF THE PAVEMENT IS FULL DEPTH HMA. A MINIMUM OF 2 INCHES OF HMA MATERIAL SHALL BE IN PLACE AFTER MILLING.
2. REMOVE AND REPLACE WITH FULL DEPTH CLASS D PATCHES TO TOP OF MILLED SURFACE.

ALL DIMENSIONS ARE IN INCHES (MILLIMETERS) UNLESS OTHERWISE SHOWN.

FILE NAME = c:\projects\diststd22x34\bd22.dgn	USER NAME = beue-dl	DESIGNED - R. SHAH	REVISED - A. ABBAS 04-27-98	STATE OF ILLINOIS DEPARTMENT OF TRANSPORTATION	PAVEMENT PATCHING FOR HMA SURFACED PAVEMENT			F.A.D. RTE.	SECTION	COUNTY	TOTAL SHEETS	SHEET NO.		
	PLOT SCALE = 50,000 / IN.	DRAWN -	REVISED - R. BORO 01-01-07		SCALE: NONE	SHEET NO. 1	OF 1 SHEETS	STA.	TO STA.	3510	29 R-2AC-RS-1	WILL	16	9
	PLOT DATE = 10/27/2008	CHECKED -	REVISED - R. BORO 09-04-07							BD400-04 (BD-22)				
		DATE - 10-25-94	REVISED - K. ENG 10-27-08							CONTRACT NO. 60F58 FED. ROAD DIST. NO. 1 ILLINOIS FED. AID PROJECT				



* 3" (75) MINIMUM FROM TOP AND BOTTOM OF THE CONCRETE PAVEMENT OR BASE COURSE.
 ** IF THE FINAL SURFACE OF THE PAVEMENT IS CONCRETE, THE GUTTER IS TO BE FLUSH WITH THE PAVEMENT.

NOTE: ① SIDEWALK, DRIVEWAY PAVEMENT OR MEDIAN SURFACE SHALL BE SIMILAR TO THE MATERIAL BEING REMOVED AND WILL BE PAID FOR SEPARATELY.

SALT TOLERANT SOD AND TOP SOIL, 4" (100) RESTORATION WILL NOT BE PAID FOR SEPARATELY, BUT SHALL BE INCLUDED IN THE COST OF CURB OR CURB AND GUTTER REMOVAL AND REPLACEMENT.

- ② CURB OR CURB AND GUTTER REPLACEMENT SHALL MATCH THE SHAPE OF THE EXISTING CURB OR CURB AND GUTTER UNLESS OTHERWISE SPECIFIED.
- ③ FOR CURB OR CURB AND GUTTER REMOVAL AND REPLACEMENT ADJACENT TO FLEXIBLE PAVEMENT DELETE EPOXY COATED TIE BARS.
- ④ LONGITUDINAL BARS, IF ENCOUNTERED IN THE EXISTING CURB OR CURB AND GUTTER, ARE NOT TO BE REPLACED. CUTTING AND REMOVING LONGITUDINAL BARS SHALL BE INCLUDED IN THE COST OF CURB OR CURB AND GUTTER REMOVAL AND REPLACEMENT.
- ⑤ THE COST OF HMA SURFACE REMOVAL IN THE EXISTING GUTTER FLAG SHALL BE INCLUDED IN THE COST OF THE CURB AND GUTTER REMOVAL AND REPLACEMENT.
- ⑥ THE REMOVAL AND REPLACEMENT OF THE EXISTING CURB OR CURB AND GUTTER SHALL BE DONE IN ACCORDANCE WITH THE APPLICABLE PORTIONS OF SECTION 440 AND 606 OF THE STANDARD SPECIFICATIONS.
- ⑦ THE LOCATIONS OF REMOVAL AND REPLACEMENT OF EXISTING CURB OR CURB AND GUTTER SHALL BE DETERMINED BY THE RESIDENT ENGINEER AT THE TIME OF CONSTRUCTION.

SUITABLE BACKFILL MATERIAL (INCLUDED IN THE COST OF CURB OR CURB AND GUTTER REMOVAL AND REPLACEMENT)

PROPOSED 3/4" (20) PREFORMED EXPANSION JOINT AT CONCRETE SIDEWALKS, DRIVEWAYS, AND MEDIANS. (INCLUDED IN THE COST OF CURB OR CURB AND GUTTER REMOVAL AND REPLACEMENT.)

UNSUITABLE SUB-BASE MATERIAL TO BE REMOVED, IF DIRECTED BY THE ENGINEER, SHALL BE REPLACED WITH EITHER SUB-BASE GRANULAR MATERIAL, TYPE B OR ADDITIONAL THICKNESS OF CONCRETE.

REMOVAL AND REPLACEMENT 4" (100) OR LESS IS INCLUDED IN THE COST OF CURB OR CURB AND GUTTER REMOVAL AND REPLACEMENT.

REMOVAL AND REPLACEMENT IN EXCESS OF 4" (100) WILL BE PAID FOR IN ACCORDANCE WITH ARTICLE 109.04 OF THE STANDARD SPECIFICATIONS.

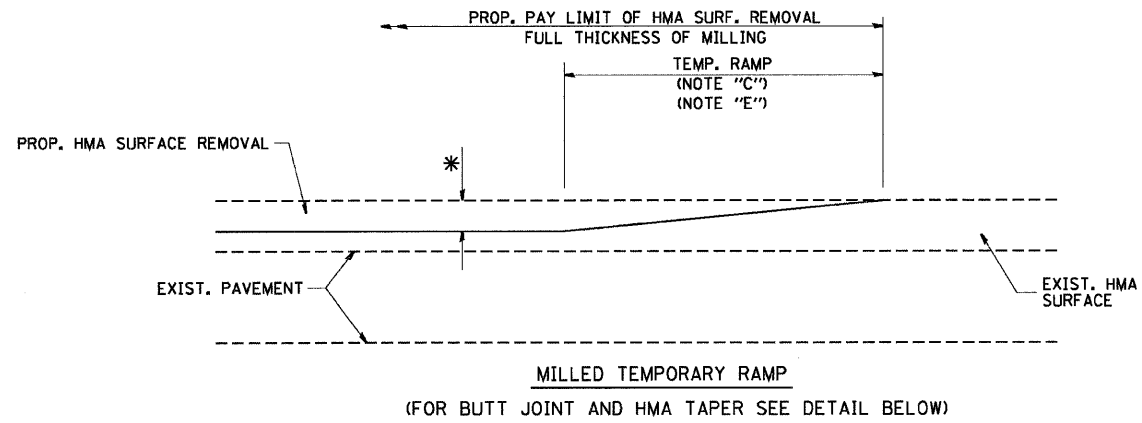
PROPOSED #6 (20) EPOXY COATED TIE BARS 24" (600) LONG AT 24" (600) CENTERS WILL NOT BE PAID FOR SEPARATELY. DELETE EPOXY COATED TIE BARS IF EXISTING TIE BARS ARE USUABLE AS DETERMINED BY THE ENGINEER. (SEE NOTE ③).

BASIS OF PAYMENT:
 THIS WORK WILL BE PAID FOR AT THE CONTRACT UNIT PRICE PER FOOT (METER) FOR "CURB REMOVAL AND REPLACEMENT" OR "COMBINATION CONCRETE CURB AND GUTTER REMOVAL AND REPLACEMENT".

CURB OR CURB AND GUTTER REMOVAL AND REPLACEMENT

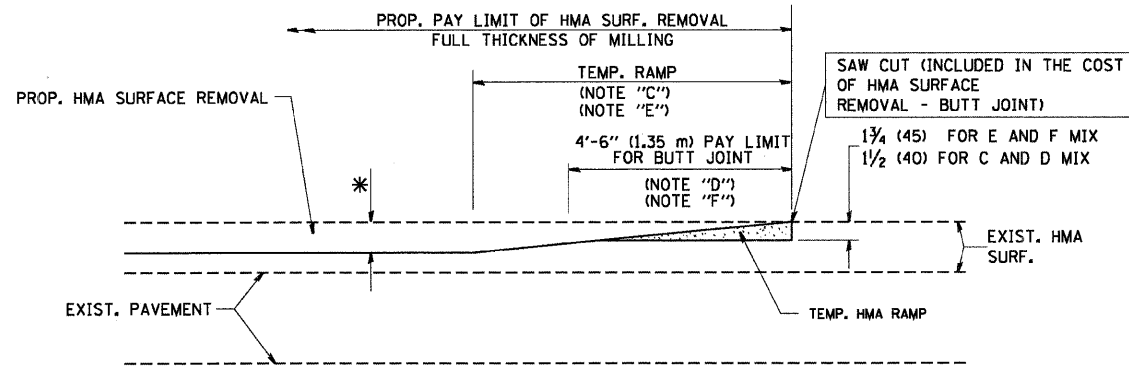
ALL DIMENSIONS ARE IN INCHES (MILLIMETERS) UNLESS OTHERWISE SHOWN.

FILE NAME = W:\diststd\22x34\bd24.dgn	USER NAME = geglienabt	DESIGNED - A. HOUSEH	REVISED - R. SHAH 10-03-96	STATE OF ILLINOIS DEPARTMENT OF TRANSPORTATION	CURB OR CURB AND GUTTER REMOVAL AND REPLACEMENT	F.A.U. RTE. 3510	SECTION 29 R-2AC-RS-1	COUNTY WILL	TOTAL SHEETS 16	SHEET NO. 10
	PLOT SCALE = 50,000' / IN.	DRAWN -	REVISED - A. ABBAS 03-21-97			BD600-06 (BD-24)		CONTRACT NO. 60F58		
	PLOT DATE = 1/4/2008	CHECKED -	REVISED - M. GOMEZ 01-22-01		SCALE: NONE	SHEET NO. 1 OF 1 SHEETS		STA. TO STA.		FED. ROAD DIST. NO. 1 ILLINOIS FED. AID PROJECT
		DATE - 03-11-94	REVISED - R. BORO 01-01-07							



MILLED TEMPORARY RAMP
(FOR BUTT JOINT AND HMA TAPER SEE DETAIL BELOW)

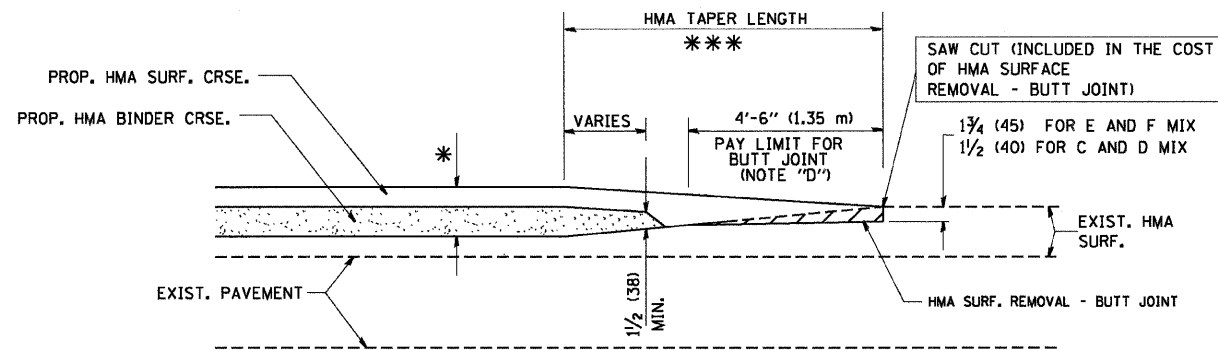
OPTION 1



HMA CONSTRUCTED TEMPORARY RAMP
(FOR BUTT JOINT AND HMA TAPER SEE DETAIL BELOW)

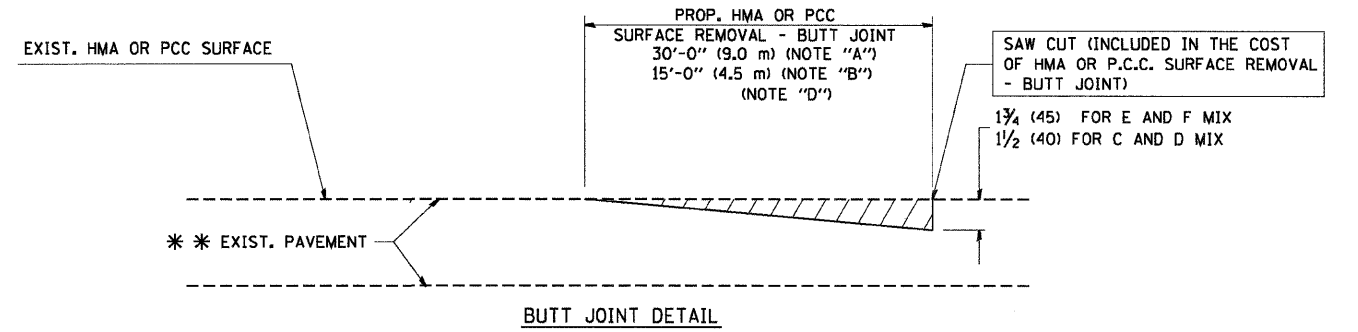
OPTION 2

TYPICAL TEMPORARY RAMP

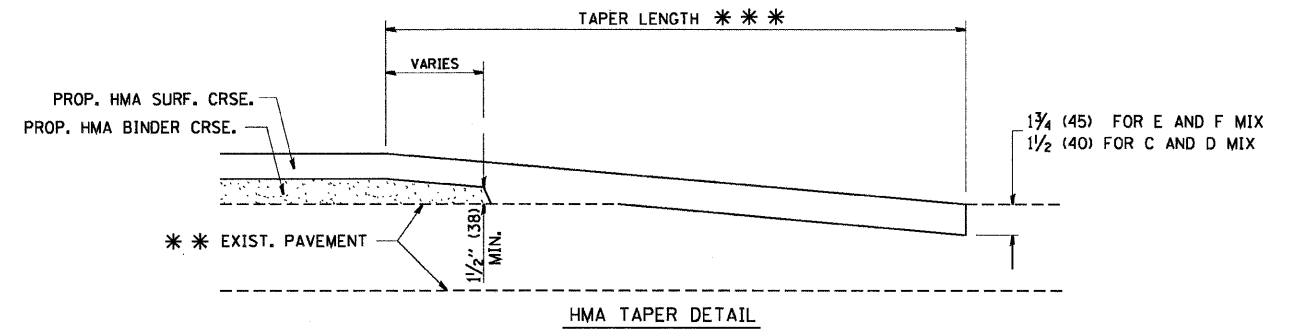


BUTT JOINT AND
HMA TAPER

**TYPICAL BUTT JOINT AND HMA TAPER
FOR MILLING AND RESURFACING**



BUTT JOINT DETAIL



HMA TAPER DETAIL

**TYPICAL BUTT JOINT AND HMA TAPER
FOR RESURFACING ONLY**

*** PC CONCRETE, HMA OR HMA RESURFACED PAVEMENT.

NOTES

- A: MAINLINE ROADWAYS AND MAJOR SIDE ROADS.
 - B: MINOR SIDE ROADS.
 - C: THE TEMP. RAMP SHALL BE CONSTRUCTED IMMEDIATELY UPON REMOVAL OF THE EXISTING HMA SURFACE.
 - D: THE BUTT JOINT SHALL BE CONSTRUCTED IMMEDIATELY PRIOR TO PLACING THE PROPOSED HMA COURSES.
 - E: TAPER THE TEMP. RAMP AT A RATE OF 3'-0" (900 mm) PER 1 INCH (25 mm) OF MILLING THICKNESS.
 - F: INSTALLATION AND REMOVAL OF THE 4'-6" (1.35 m) TEMP. RAMP IS INCLUDED IN COST OF HMA SURFACE REMOVAL - BUTT JOINT
 - G: SEE ARTICLE 406.08 AND 406.14 OF THE STANDARD SPECIFICATIONS FOR "HMA AND/OR PCC SURFACE REMOVAL, BUTT JOINT".
- * SEE TYPICAL SECTIONS FOR MILLING THICKNESS.
- *** 20'-0" (6.1 m) PER 1 (25) RESURFACING (NOTE "A")
10'-0" (3.0 m) PER 1 (25) RESURFACING (NOTE "B")

BASIS OF PAYMENT:

THE BUTT JOINT WILL BE PAID FOR AT THE CONTRACT UNIT PRICE PER SQUARE YARD (SQUARE METER) FOR "HOT-MIX ASPHALT SURFACE REMOVAL - BUTT JOINT" OR FOR "PORTLAND CEMENT CONCRETE SURFACE REMOVAL - BUTT JOINT".

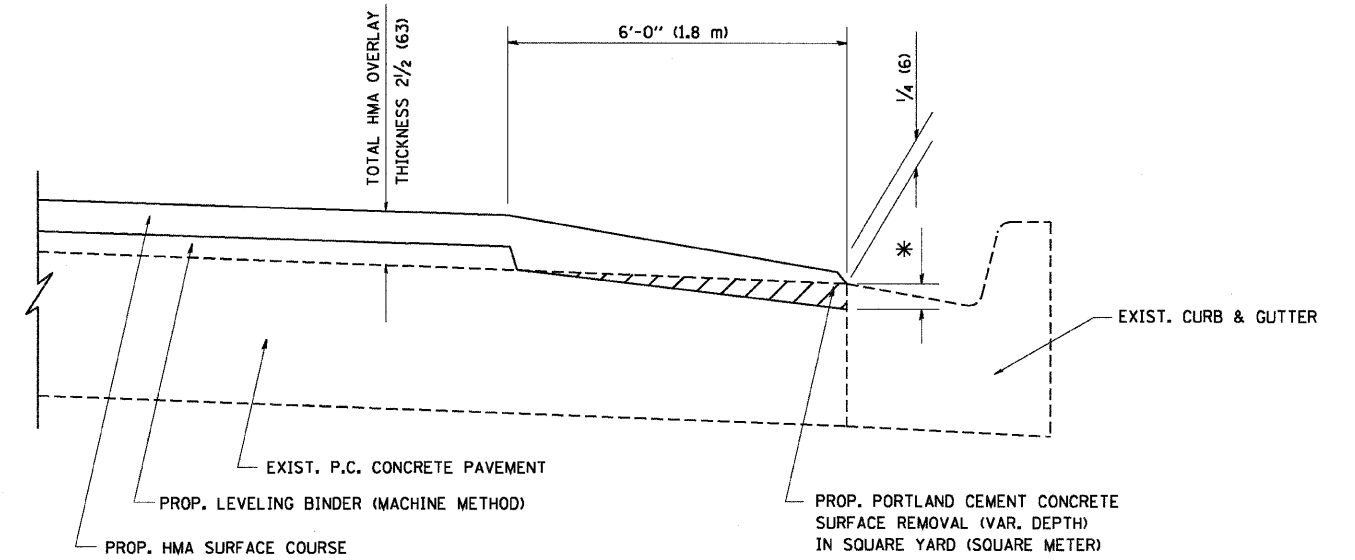
ALL DIMENSIONS ARE IN INCHES (MILLIMETERS) UNLESS OTHERWISE SHOWN.

FILE NAME = W:\dststd\22x34\ba32.dgn	USER NAME = goglienobt	DESIGNED - M. DE YONG	REVISED - R. SHAH 10-25-94
		DRAWN -	REVISED - A. ABBAS 03-21-97
	PLOT SCALE = 50,0000' / IN.	CHECKED -	REVISED - M. GOMEZ 04-06-01
	PLOT DATE = 1/4/2008	DATE - 06-13-90	REVISED - R. BORO 01-01-07

**STATE OF ILLINOIS
DEPARTMENT OF TRANSPORTATION**

BUTT JOINT AND HMA TAPER DETAILS			
SCALE: NONE	SHEET NO. 1	OF 1 SHEETS	STA. TO STA.

F.A.L. RTE.	SECTION	COUNTY	TOTAL SHEETS	SHEET NO.
3510	29 R-2AC-RS-1	WILL	16	11
BD400-05 BD32			CONTRACT NO. 60F58	
FED. ROAD DIST. NO. 1 ILLINOIS FED. AID PROJECT				



**HMA TAPER AT
EDGE OF P.C.C. PAVEMENT**

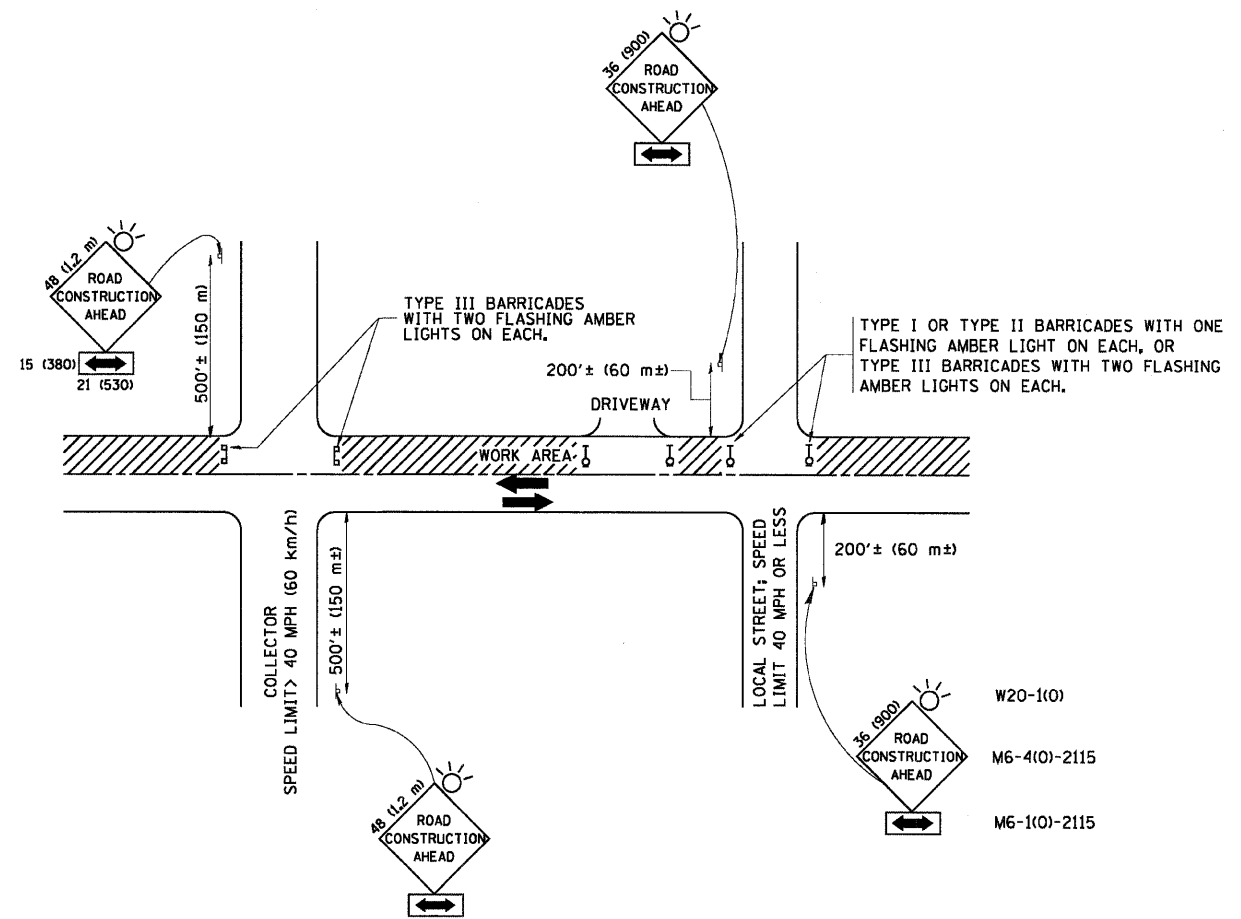
HMA SURFACE	THICKNESS	LEVELING BINDER	THICKNESS	* MILLING AT GUTTER FLAG
C OR D	1 1/2 (38)	1 (25)	1/4 (33)	
F	1 3/4 (44)	3/4 (19)	1/2 (38)	

ALL DIMENSIONS ARE IN INCHES (MILLIMETERS) UNLESS OTHERWISE SHOWN.

FILE NAME = W:\distatd\22x34\bd33.dgn	USER NAME = geglienobt	DESIGNED - R. SHAH	REVISED - R. SHAH 10-25-94
		DRAWN - JIS	REVISED - A. ABBAS 05-05-99
	PLOT SCALE = 50.0000' / IN.	CHECKED - A. ABBAS	REVISED - E. GOMEZ 12-21-00
	PLOT DATE = 1/4/2008	DATE - 09-10-94	REVISED - R. BORO 01-01-07

**STATE OF ILLINOIS
DEPARTMENT OF TRANSPORTATION**

SCALE: NONE		SHEET NO. 1 OF 1 SHEETS		STA.	TO STA.
F.A.U. RTE.	SECTION	COUNTY	TOTAL SHEETS	SHEET NO.	
3510	29 R-2AC-RS-1	WILL	16	12	
BD400-06 (BD33)		CONTRACT NO. 60F58			
FED. ROAD DIST. NO. 1 ILLINOIS FED. AID PROJECT					



TRAFFIC CONTROL AND PROTECTION FOR SIDE ROADS, INTERSECTIONS, AND DRIVEWAYS

NOTES:

- A. FOR NO LANE RESTRICTION ON THE SIDE ROAD OR DRIVEWAYS:
 1. SIDE ROAD WITH A SPEED LIMIT OF 40 MPH (60 km/h) OR LESS AS SHOWN ON THE DRAWING AND AS DIRECTED BY THE ENGINEER:
 - a) ONE ROAD CONSTRUCTION AHEAD SIGN 36 x 36 (900x900) WITH A FLASHER AND FLAG MOUNTED ON IT APPROXIMATELY 200' (60 m) IN ADVANCE OF THE MAIN ROUTE.
 - b) THE CLOSED PORTION OF THE MAIN ROUTE SHALL BE PROTECTED BY BLOCKING WITH TYPE I, TYPE II OR TYPE III BARRICADES, 1/3 OF THE CROSS SECTION OF THE CLOSED PORTION.
 2. SIDE ROAD WITH A SPEED LIMIT GREATER THAN 40 MPH (60 km/h) AS SHOWN ON THE DRAWING AND AS DIRECTED BY THE ENGINEER:
 - a) ONE ROAD CONSTRUCTION AHEAD SIGN 48 x 48 (1.2 m x 1.2 m) WITH A FLASHER MOUNTED ON IT APPROXIMATELY 500' (150 m) IN ADVANCE OF THE MAIN ROUTE.
 - b) THE CLOSED PORTION OF THE MAIN ROUTE SHALL BE PROTECTED BY BLOCKING WITH TYPE III BARRICADES, 1/2 OF THE CROSS SECTION OF THE CLOSED PORTION.
 3. WHEN THE SIDE ROAD LIES BETWEEN THE BEGINNING OF THE MAINLINE SIGNING AND THE WORK ZONE, A SINGLE HEADED ARROW (M6-1) SHALL BE USED IN LIEU OF THE DOUBLE HEADED ARROW (M6-4).
- B. FOR A LANE CLOSURE ON A SIDE ROAD OR DRIVEWAY:

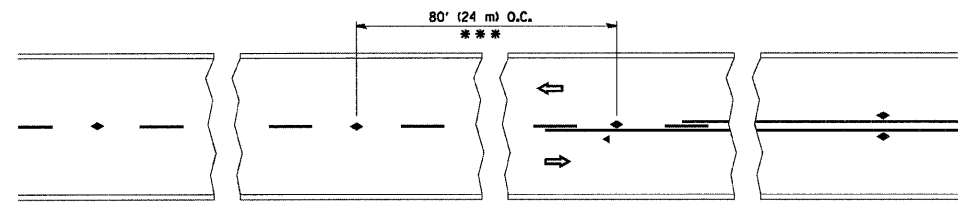
USE APPLICABLE PORTIONS OF THE TYPICAL APPLICATION OF TRAFFIC CONTROL DEVICES (STD. 701501, STD. 701606 OR THE APPROPRIATE STANDARD). THE SPACING OF SIGNS AND BARRICADES SHALL BE ADJUSTED FOR FIELD CONDITIONS AS DIRECTED BY THE ENGINEER. THE DIRECTIONAL ARROW SHALL BE COVERED OR REMOVED WHEN NO LONGER CONSISTENT WITH THE SIDE ROAD LANE CLOSURE.
- C. ADVANCE WARNING SIGNS ARE TO BE OMITTED ON DRIVEWAY UNLESS OTHERWISE NOTED.
- D. THE TRAFFIC CONTROL AND PROTECTION FOR SIDE ROADS, INTERSECTIONS, AND DRIVEWAYS SHALL BE INCIDENTAL TO THE COST OF SPECIFIED TRAFFIC CONTROL STANDARDS OR ITEMS.

All dimensions are in millimeters (inches) unless otherwise shown.

FILE NAME = W:\distatd\22x34\td10.dgn	USER NAME = gegliemabt	DESIGNED - LHA	REVISED - J. OBERLE 10-18-95
		DRAWN -	REVISED - A. HOUSEH 03-06-96
	PLOT SCALE = 60,000' / IN.	CHECKED -	REVISED - A. HOUSEH 10-15-96
	PLOT DATE = 1/4/2008	DATE - 06-89	REVISED - T. RAMMACHER 01-06-00

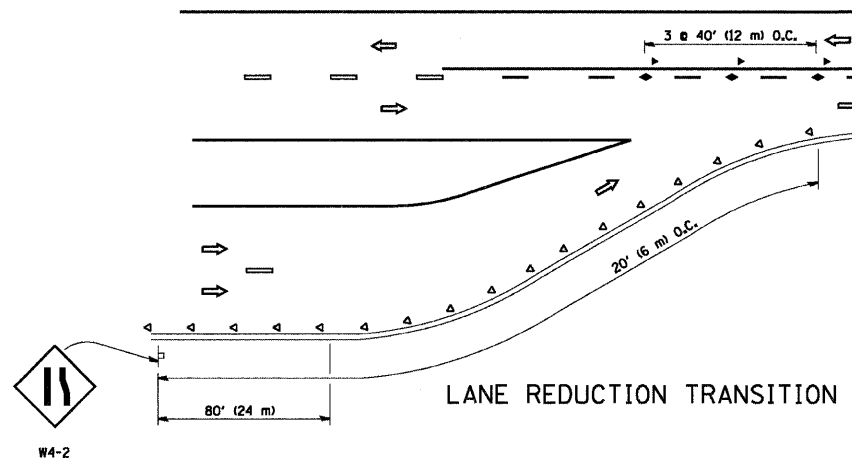
**STATE OF ILLINOIS
DEPARTMENT OF TRANSPORTATION**

TRAFFIC CONTROL AND PROTECTION FOR SIDE ROADS, INTERSECTIONS, AND DRIVEWAYS		F.A.U. RTE.	SECTION	COUNTY	TOTAL SHEETS	SHEET NO.
		3510	29 R-2AC-RS-1	WILL	16	13
SCALE: NONE		SHEET NO. 1 OF 1 SHEETS		STA.	TO STA.	
		TC-10		CONTRACT NO. 60F58		
FED. ROAD DIST. NO. 1 ILLINOIS FED. AID PROJECT						

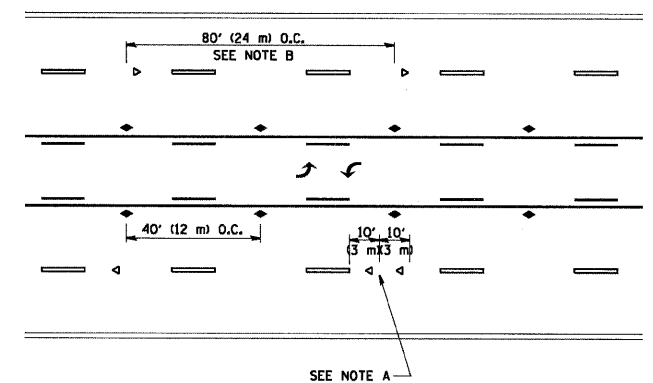


*** REDUCE TO 40' (12 m) O.C. ON CURVES WITH POSTED OR ADVISORY SPEED 45 M.P.H. (70 km/h) OR LESS.

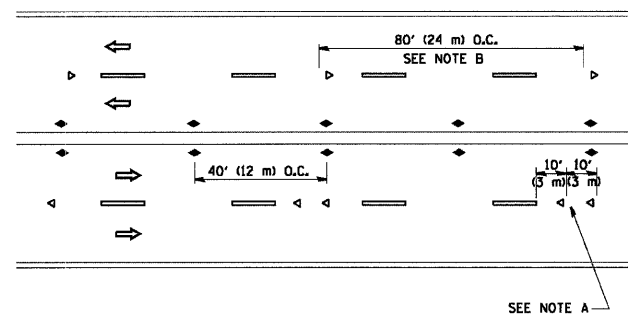
TWO-LANE/TWO-WAY



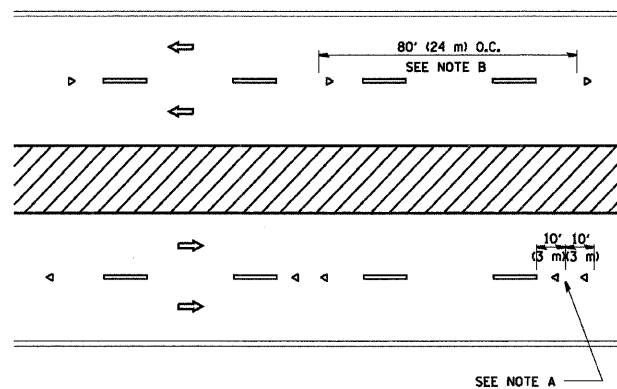
LANE REDUCTION TRANSITION



TWO-WAY LEFT TURN



MULTI-LANE/UNDIVIDED



MULTI-LANE/DIVIDED

GENERAL NOTES

1. MARKERS USED WITH DASHED LINES SHALL BE CENTERED IN THE GAP BETWEEN SEGMENTS.
2. MARKERS USED ADJACENT TO SOLID LINES SHALL BE OFFSET 2 TO 3 (50 TO 75) TOWARD TRAFFIC AS SHOWN.
3. MARKERS THROUGH TANGENTS LESS THAN 500' (150 m) IN LENGTH BETWEEN CURVES SHALL BE INSTALLED AT THE LESSER OF THE TWO CURVE SPACINGS.

SYMBOLS

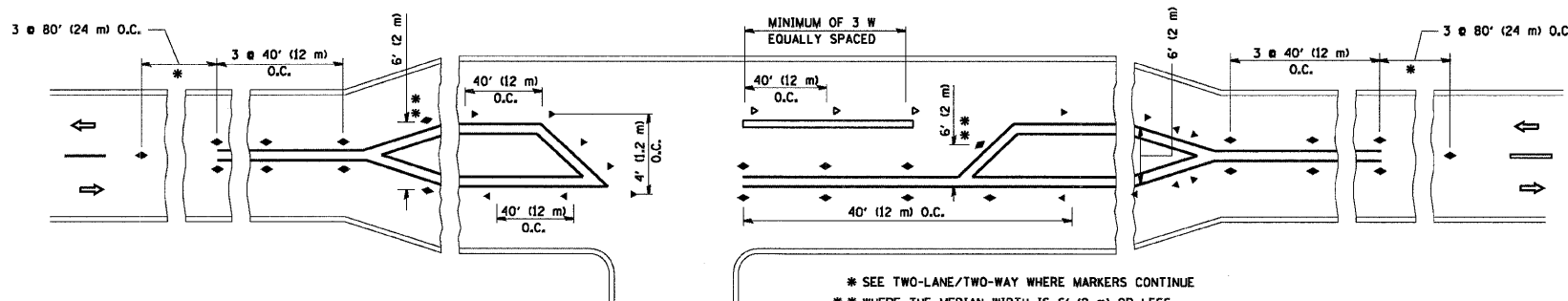
- YELLOW STRIPE
- WHITE STRIPE
- ◀ ONE-WAY AMBER MARKER
- ◁ ONE-WAY CRYSTAL MARKER (W/O)
- ◆ TWO-WAY AMBER MARKER

LANE MARKER NOTES

- B. REDUCE TO 40' (12 m) O.C. ON CURVES WHERE ADVISORY SPEEDS ARE 10 M.P.H. (20 km/h) LOWER THAN POSTED SPEEDS.
- A. USE DOUBLE LANE LINE MARKERS SPACED AS SHOWN.

DESIGN NOTES

1. DOUBLE LANE LINE MARKERS SHALL BE USED UNLESS SPECIFIED OTHERWISE.
2. EXCEPT AS SHOWN ON THE LANE REDUCTION TRANSITION AND FREEWAY EXIT RAMP DETAIL, MARKERS ARE NOT TO BE SPECIFIED ON RIGHT EDGE LINES.
3. THE EXACT MARKER LIMITS, SPACING, AND COLOR SHOULD BE INCLUDED IN THE PLANS.
4. MARKERS SHOULD NOT BE USED ALONGSIDE CURBS EXCEPT FOR EXTREMELY SHORT SECTIONS OF CURBS WHERE NOT MORE THAN TWO MARKERS WOULD BE INVOLVED.



LEFT TURN

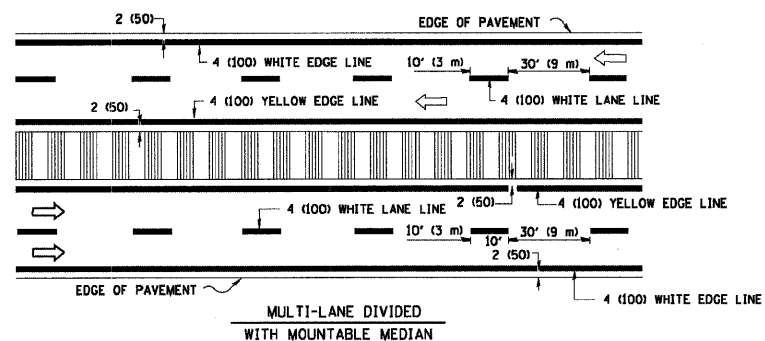
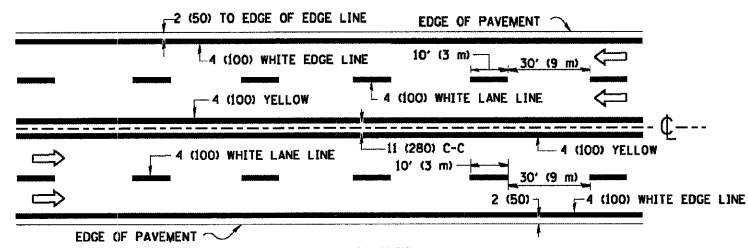
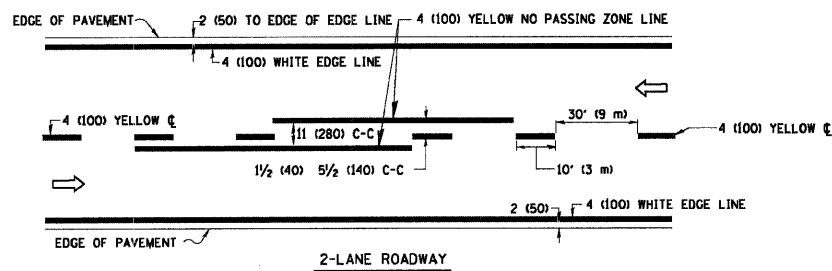
All dimensions are in inches (millimeters) unless otherwise shown.

FILE NAME = W:\dstatd\22x34\toll.dgn	USER NAME = geglionobt	DESIGNED -	REVISED - T. RAMMACHER 09-19-94
		DRAWN -	REVISED - T. RAMMACHER 03-12-99
	PLOT SCALE = 50.000' / IN.	CHECKED -	REVISED - T. RAMMACHER 01-06-00
	PLOT DATE = 1/4/2008	DATE -	REVISED -

STATE OF ILLINOIS
DEPARTMENT OF TRANSPORTATION

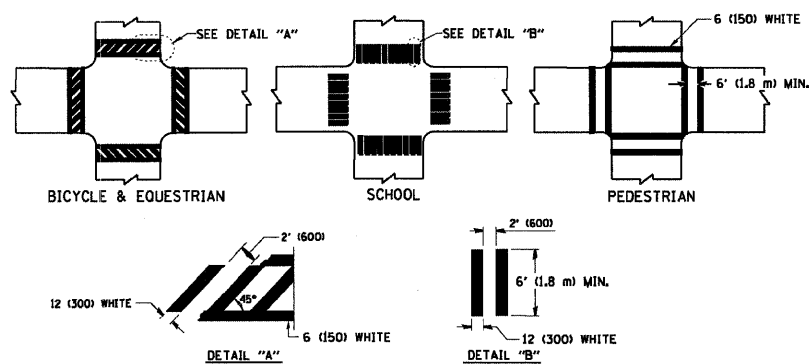
TYPICAL APPLICATIONS			
RAISED REFLECTIVE PAVEMENT MARKERS (SNOW-PLOW RESISTANT)			
SCALE: NONE	SHEET NO. 1 OF 1 SHEETS	STA.	TO STA.

F.A.U. RTE.	SECTION	COUNTY	TOTAL SHEETS	SHEET NO.
3510	29 R-2AC-RS-1	WILL.	16	14
TC-11			CONTRACT NO. 60F58	
FED. ROAD DIST. NO. 1 ILLINOIS FED. AID PROJECT				

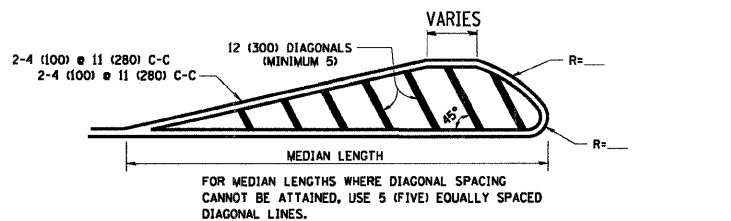
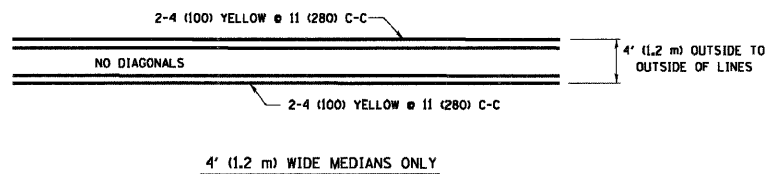


NOTE: MEDIANS WITH BARRIER CURBS DO NOT REQUIRE AN EDGE LINE

TYPICAL LANE AND EDGE LINE MARKING

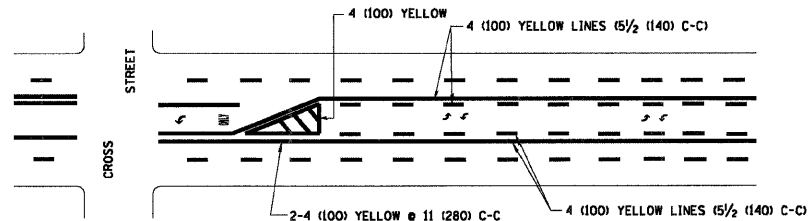


TYPICAL CROSSWALK MARKING



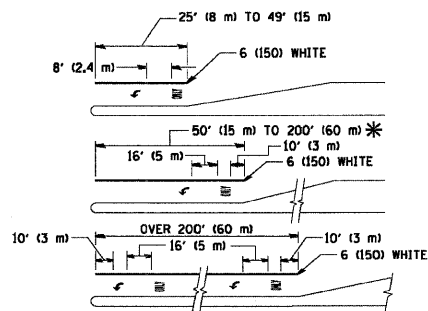
DIAGONAL LINE SPACING: 50' (15 m) C-C (LESS THAN 30MPH (50 km/h))
75' (25 m) C-C 30MPH (50 km/h) TO 45MPH (70 km/h)
150' (45 m) C-C (MORE THAN 45MPH (70 km/h))

MEDIANS OVER 4' (1.2 m) WIDE



A MINIMUM OF TWO PAIRS OF TURN ARROWS SHALL BE USED, WHITE IN COLOR. ADDITIONAL PAIRS SHALL BE PLACED AT 200' (60 m) TO 300' (90 m) INTERVALS.

TYPICAL PAINTED MEDIAN MARKING

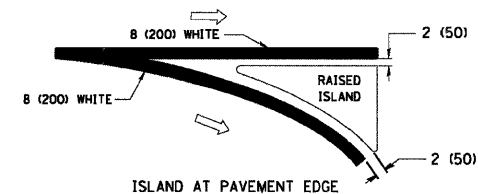
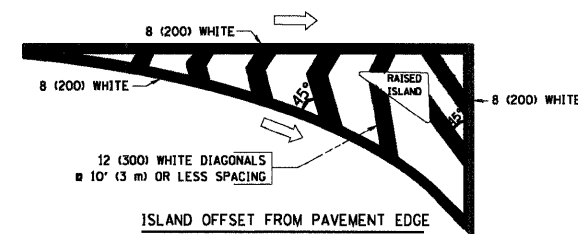


FULL SIZE LETTERS 8' (2.4 m) AND ARROWS SHALL BE USED.
AREA = 15.6 SQ. FT. (1.5 m²) ONLY AREA = 20.8 SQ. FT. (1.9 m²)

* TURN LANES IN EXCESS OF 400' (120 m) IN LENGTH MAY HAVE AN ADDITIONAL SET OF ARROW - "ONLY" INSTALLED MIDWAY BETWEEN THE OTHER TWO SETS OF ARROW - "ONLY".

TYPICAL LEFT (OR RIGHT) TURN LANE

TYPICAL TURN LANE MARKING



TYPICAL ISLAND MARKING

TYPE OF MARKING	WIDTH OF LINE	PATTERN	COLOR	SPACING / REMARKS
CENTERLINE ON 2 LANE PAVEMENT	4 (100)	SKIP-DASH	YELLOW	10' (3 m) LINE WITH 30' (9 m) SPACE
CENTERLINE ON MULTI-LANE UNDIVIDED PAVEMENT	2 @ 4 (100)	SOLID	YELLOW	11 (280) C-C
NO PASSING ZONE LINES: FOR ONE DIRECTION FOR BOTH DIRECTIONS	4 (100) 2 @ 4 (100)	SOLID SOLID	YELLOW YELLOW	5/2 (140) C-C FROM SKIP-DASH CENTERLINE 11 (280) C-C OMIT SKIP-DASH CENTERLINE BETWEEN
LANE LINES	4 (100) 5 (125) ON FREEWAYS	SKIP-DASH SKIP-DASH	WHITE WHITE	10' (3 m) LINE WITH 30' (9 m) SPACE
DOTTED LINES (EXTENSIONS OF CENTER, LANE OR TURN LANE MARKINGS)	SAME AS LINE BEING EXTENDED	SKIP-DASH	SAME AS LINE BEING EXTENDED	2' (600) LINE WITH 6' (1.8 m) SPACE
EDGE LINES	4 (100)	SOLID	YELLOW-LEFT WHITE-RIGHT	OUTLINE MOUNTABLE MEDIANS IN YELLOW. EDGE LINES ARE NOT USED NEXT TO BARRIER CURB
TURN LANE MARKINGS	6 (150) LINE; FULL SIZE LETTERS & SYMBOLS (8' (2.4m))	SOLID	WHITE	SEE TYPICAL TURN LANE MARKING DETAIL
TWO WAY LEFT TURN MARKING	2 @ 4 (100) EACH DIRECTION 8' (2.4m) LEFT ARROW	SKIP-DASH AND SOLID IN PAIRS	YELLOW WHITE	10' (3 m) LINE WITH 30' (9 m) SPACE FOR SKIP-DASH; 5/2 (140) C-C BETWEEN SOLID LINE AND SKIP-DASH LINE SEE TYPICAL TWO-WAY LEFT TURN MARKING DETAIL
CROSSWALK LINES (PEDESTRIAN) A. DIAGONALS (BIKE & EQUESTRIAN) B. LONGITUDINAL BARS (SCHOOL)	2 @ 6 (150) 12 (300) @ 45° 12 (300) @ 90°	SOLID SOLID SOLID	WHITE WHITE WHITE	NOT LESS THAN 6' (1.8 m) APART 2' (600) APART SEE TYPICAL CROSSWALK MARKING DETAILS.
STOP LINES	24 (600)	SOLID	WHITE	PLACE 4' (1.2 m) IN ADVANCE OF AND PARALLEL TO CROSSWALK, IF PRESENT. OTHERWISE, PLACE AT DESIRED STOPPING POINT, PARALLEL TO CROSSROAD CENTERLINE, WHERE POSSIBLE
PAINTED MEDIANS	2 @ 4 (100) WITH 12 (300) DIAGONALS @ 45° NO DIAGONALS USED FOR 4' (1.2 m) WIDE MEDIANS	SOLID	YELLOW; TWO WAY TRAFFIC WHITE; ONE WAY TRAFFIC	11 (280) C-C FOR THE DOUBLE LINE SEE TYPICAL PAINTED MEDIAN MARKING.
GORE MARKING AND CHANNELIZING LINES	8 (200) WITH 12 (300) DIAGONALS @ 45°	SOLID	WHITE	DIAGONALS: 15' (4.5 m) C-C (LESS THAN 30MPH (50 km/h)) 20' (6 m) C-C 30MPH (50 km/h) TO 45MPH (70 km/h) 30' (9 m) C-C (OVER 45MPH (70 km/h))
RAILROAD CROSSING	24 (600) TRANSVERSE LINES; "RR" IS 6' (1.8 m) LETTERS; 16 (400) LINE FOR "X"	SOLID	WHITE	SEE STATE STANDARD 78000! AREA OF: "R"=3.6 SQ. FT. (0.33 m ²) EACH "X"=54.0 SQ. FT. (5.0 m ²)
SHOULDER DIAGONALS	12 (300) @ 45°	SOLID	WHITE - RIGHT YELLOW - LEFT	50' (15 m) C-C (LESS THAN 30MPH (50 km/h)) 75' (25 m) C-C (30 MPH (50 km/h) TO 45MPH (70 km/h)) 150' (45 m) C-C (OVER 45MPH (70 km/h))

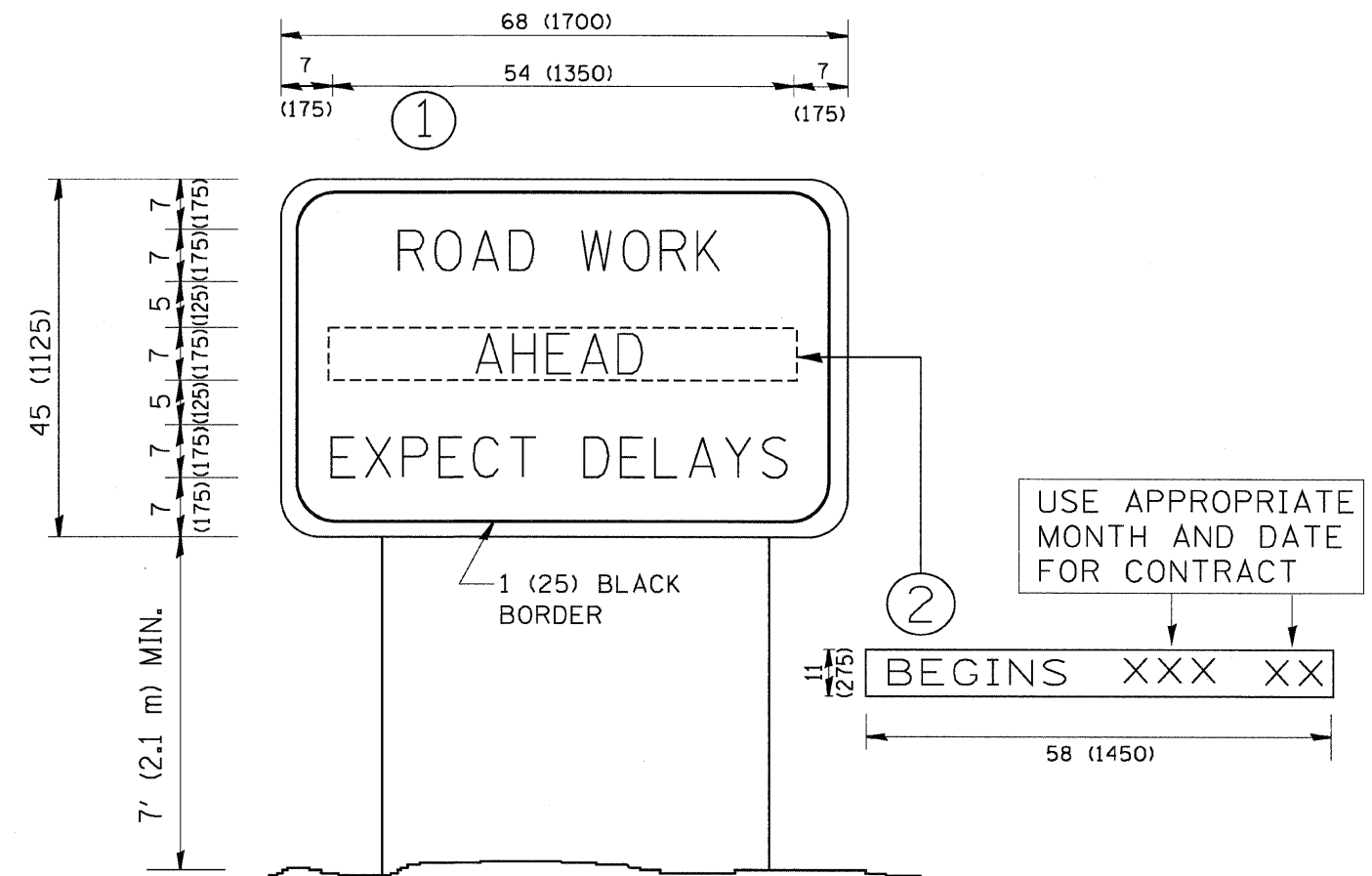
FOR FURTHER DETAILS ON PAVEMENT MARKING REFER TO STANDARD SPECIFICATIONS FOR ROAD AND BRIDGE CONSTRUCTION AND STATE STANDARD 78000!

All dimensions are in inches (millimeters) unless otherwise shown.

FILE NAME = W:\distatd\22x34\vol13.dgn	USER NAME = geglienobt	DESIGNED - EVERS	REVISED - T. RAMMACHER 10-27-94
	PLOT SCALE = 50.000' / IN.	DRAWN -	REVISED - A. HOUSEH 10-09-96
	PLOT DATE = 1/4/2008	CHECKED -	REVISED - A. HOUSEH 10-17-96
		DATE - 03-19-90	REVISED - T. RAMMACHER 01-06-00

STATE OF ILLINOIS
DEPARTMENT OF TRANSPORTATION

DISTRICT ONE				F.A.U. RTE.	SECTION	COUNTY	TOTAL SHEETS	SHEET NO.
TYPICAL PAVEMENT MARKINGS				3510	29 R-24C-RS-1	WILL	16	15
				TC-13		CONTRACT NO. 60F58		
SCALE: NONE				SHEET NO. 1 OF 1 SHEETS		FED. ROAD DIST. NO. 1 (ILLINOIS) FED. AID PROJECT		
				STA.	TO STA.			



NOTES:

1. USE BLACK LETTERING ON ORANGE BACKGROUND.
2. ERECT SIGNS IN ADVANCE OF THE LOCATION FOR THE "ROAD CONSTRUCTION AHEAD" SIGN AT LOCATIONS AS DIRECTED BY THE ENGINEER.
3. ERECT SIGN ① WITH INSTALLED PANEL ② ONE WEEK PRIOR TO THE START OF CONSTRUCTION.
4. REMOVE PANEL ② SOON AFTER THE START OF CONSTRUCTION.
5. SEE SPECIAL PROVISION FOR "TEMPORARY INFORMATION SIGNING" FOR ADDITIONAL INFORMATION.
6. ONE SIGN ASSEMBLY EQUALS 25.70 SQ. FT. (2.3 SQ. M.)
7. SHALL BE PAID FOR AS TEMPORARY INFORMATION SIGNING.

ALL DIMENSIONS ARE IN INCHES (MILLIMETERS) UNLESS OTHERWISE SHOWN.

FILE NAME = W:\diststd\22x34\to22.dgn	USER NAME = gaglionobt	DESIGNED -	REVISED - R. MIRS 09-15-97	STATE OF ILLINOIS DEPARTMENT OF TRANSPORTATION	ARTERIAL ROAD INFORMATION SIGN			F.A.I.L. RTE. 3510	SECTION 29 R-2AC-RS-1	COUNTY WILL	TOTAL SHEETS 16	SHEET NO. 16
	PLOT SCALE = 50.000' / IN.	DRAWN -	REVISED - R. MIRS 12-11-97		SCALE: NONE	SHEET NO. 1	OF 1	SHEETS	STA.	TO STA.	TC-22 FED. ROAD DIST. NO. 1 ILLINOIS FED. AID PROJECT	
	PLOT DATE = 1/4/2008	CHECKED -	REVISED - T. RAMMACHER 02-02-99								CONTRACT NO. 60F58	
		DATE -	REVISED - C. JUCIUS 01-31-07									