

STATE OF ILLINOIS
DEPARTMENT OF TRANSPORTATION
DIVISION OF HIGHWAYS

**PROPOSED
HIGHWAY PLANS**

F.A.P. 347 (ROOSEVELT ROAD)
SECTION: 2009-035 RS
IL 171 (1ST AVENUE) TO AUSTIN BOULEVARD
RESURFACING

COOK COUNTY
C-91-398-09

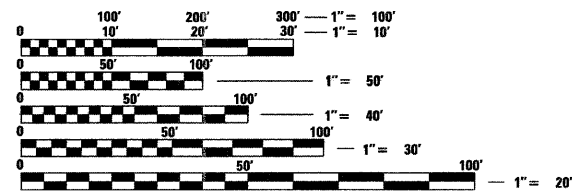
| | | | | |
|-----------------------|-------------|--------------------|--------------|-----------|
| F.A.P. RTE. | SECTION | COUNTY | TOTAL SHEETS | SHEET NO. |
| 347 | 2009-035 RS | COOK | 27 | 1 |
| FED. ROAD DIST. NO. 1 | ILLINOIS | CONTRACT NO. 60G36 | | |

FOR INDEX OF SHEETS, SEE SHEET NO. 2

THESE IMPROVEMENTS ARE LOCATED
WITHIN THE VILLAGES OF FOREST PARK AND OAK PARK,
THE TOWN OF CICERO, AND THE CITY OF BERWYN

TRAFFIC DATA

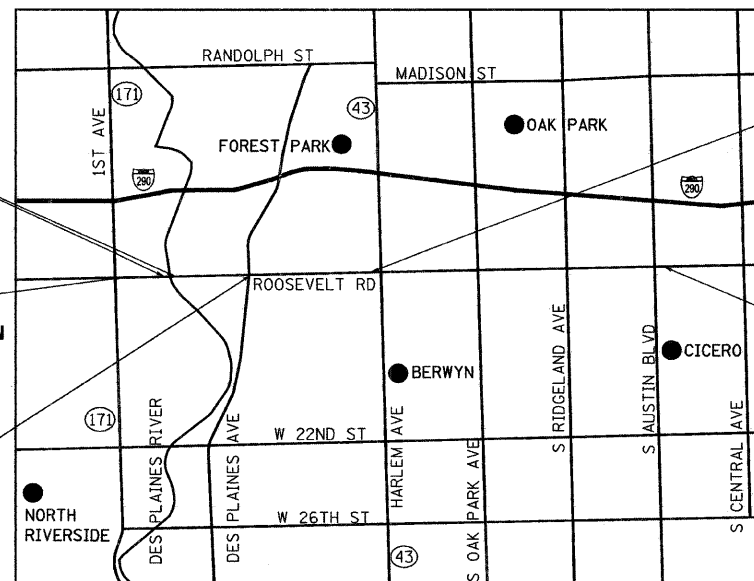
2006 ADT - 26,600
POSTED SPEED LIMIT - 35 MPH



FULL SIZE PLANS HAVE BEEN PREPARED USING STANDARD
ENGINEERING SCALES. REDUCED SIZED PLANS WILL NOT
CONFORM TO STANDARD SCALES. IN MAKING MEASUREMENTS
ON REDUCED PLANS, THE ABOVE SCALES MAY BE USED.

J.U.L.I.E.
JOINT UTILITY LOCATION INFORMATION FOR EXCAVATION
1-800-892-0123
OR 811

Ciorba Group, Inc.
DESIGN FIRM
REGISTRATION NUMBER
184-001016
CONSULTING ENGINEERS
SUITE 402, 5507 NORTH CUMBERLAND AVE
CHICAGO, ILLINOIS 60656 ☎ (773) 775-4009



STA. 29 + 59
OMISSION
STA. 31 + 79

BEGIN PROJECT
STA. 18 + 14

BEGIN OMISSION
STA. 54 + 60

END OMISSION
STA. 90 + 22

END PROJECT
STA. 177 + 94

R 12E | R 13E

PROVISO, BERWYN, OAK PARK,
AND CICERO TOWNSHIPS

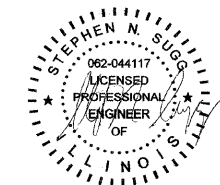
LOCATION MAP
1" = 2500'

GROSS LENGTH OF PROJECT = 15,980 FT = 3.03 MI.
NET LENGTH OF PROJECT = 12,198 FT = 2.31 MI.



LOCATION OF SECTION INDICATED THUS: - [Symbol]

STATE OF ILLINOIS
DEPARTMENT OF TRANSPORTATION
DIVISION OF HIGHWAYS
SUBMITTED APRIL 6, 2009
Diana M. O'Keefe DEPUTY DIRECTOR OF HIGHWAYS, REGION ENGINEER
May 1, 2009
Charles J. Ingersoll ENGINEER OF DESIGN AND ENVIRONMENT
May 1, 2009
Christine M. Reed DIRECTOR OF HIGHWAYS, CHIEF ENGINEER



DATE: 4/2/2009
SEAL EXPIRES: 11/30/2009

**PRINTED BY THE AUTHORITY
OF THE STATE OF ILLINOIS**

DISTRICT 1 DESIGN PLAN PREPARATION ENGINEER: K. ENG (847)705-4247

CONTRACT NO. 60G36