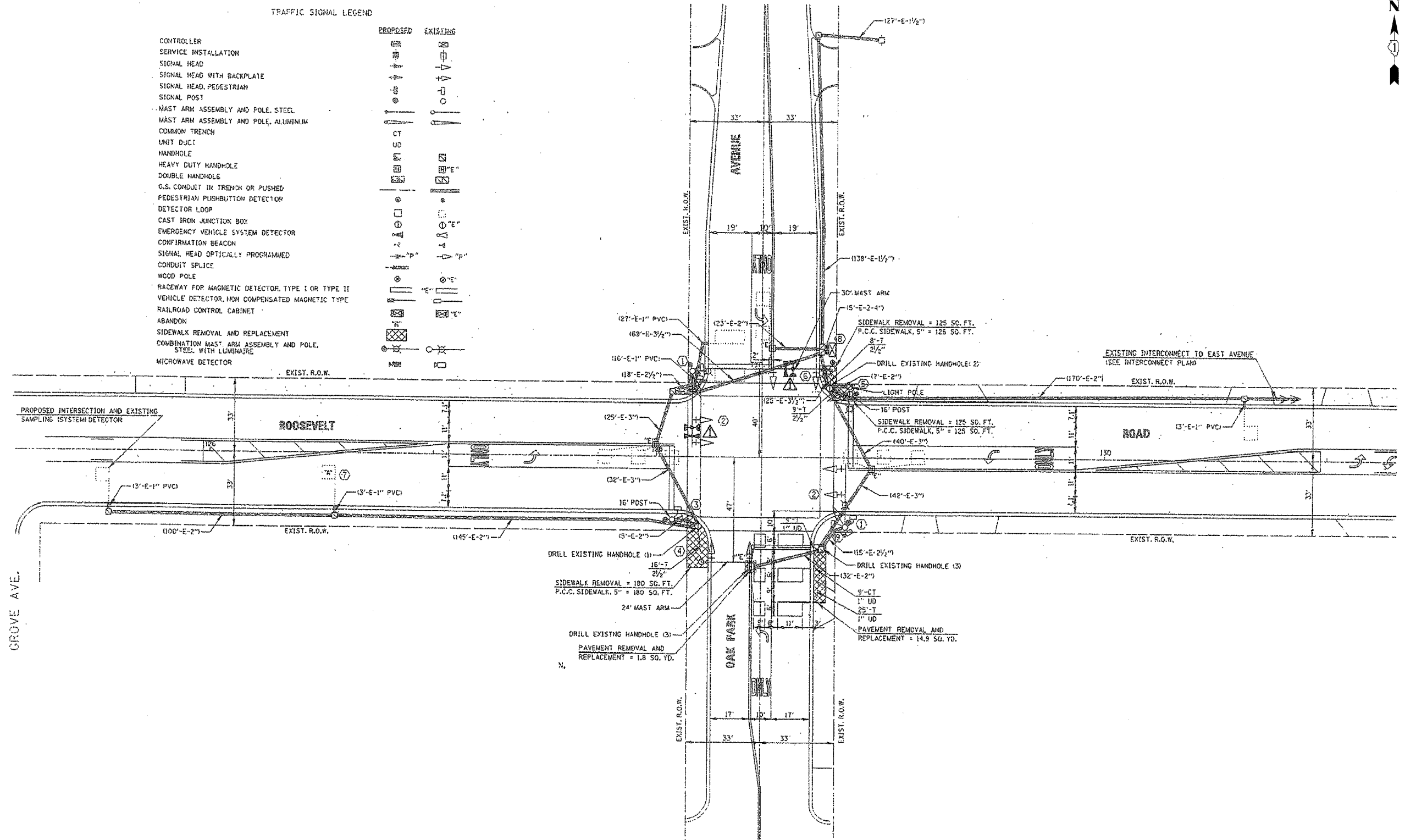


TRAFFIC SIGNAL LEGEND

	PROPOSED	EXISTING
CONTROLLER		
SERVICE INSTALLATION		
SIGNAL HEAD		
SIGNAL HEAD WITH BACKPLATE		
SIGNAL HEAD, PEDESTRIAN		
SIGNAL POST		
MAST ARM ASSEMBLY AND POLE, STEEL		
MAST ARM ASSEMBLY AND POLE, ALUMINUM		
COMMON TRENCH		
LANE DUCT		
HANDHOLE		
HEAVY DUTY HANDHOLE		
DOUBLE HANDHOLE		
G.S. CONDUIT IN TRENCH OR PUSHED		
PEDESTRIAN PUSHBUTTON DETECTOR		
DETECTOR LOOP		
CAST IRON JUNCTION BOX		
EMERGENCY VEHICLE SYSTEM DETECTOR		
CONFIRMATION BEACON		
SIGNAL HEAD OPTICALLY PROGRAMMED		
CONDUIT SPLICE		
WOOD POLE		
RACEWAY FOR MAGNETIC DETECTOR, TYPE I OR TYPE II		
VEHICLE DETECTOR, NON COMPENSATED MAGNETIC TYPE		
RAILROAD CONTROL CABINET		
ABANDON		
SIDEWALK REMOVAL AND REPLACEMENT		
COMBINATION MAST ARM ASSEMBLY AND POLE, STEEL WITH LUMINAIRE		
MICROWAVE DETECTOR		



REPLACE ALL DETECTOR LOOPS AS SHOWN  
(WITHIN PROJECT LIMITS)

CODE NO.	QUANTITY	UNIT	ITEM
86600600	548	FOOT	DETECTOR LOOP REPLACEMENT

FILE NAME: s:\projects\3368\11\dwg\Signal\3368\_11\_Loop403.dwg



**Ciorba Group, Inc.**  
CONSULTING ENGINEERS  
5507 North Cumberland Avenue, Suite 402  
Chicago, Illinois 60656  
Tel. 773.775.4009 Fax 773.775.4014

USER NAME = alaw	DESIGNED AL	REVISED -
PLOT SCALE = 1/8" = 1'-0"	DRAWN RJR	REVISED -
PLOT DATE = 4/8/2009	CHECKED WBL	REVISED -
	DATE 03/27/09	REVISED -

STATE OF ILLINOIS  
DEPARTMENT OF TRANSPORTATION

**ROOSEVELT ROAD**  
**IL 171 (1ST AVENUE) TO AUSTIN BOULEVARD**  
**DETECTOR LOOP REPLACEMENT PLAN**

SCALE: N.T.S. SHEET NO. 13 OF 27 SHEETS STA. TO STA.

F.A.P. RTE.	SECTION	COUNTY	TOTAL SHEETS	SHEET NO.
347	2009-035 R5	COOK	27	13
FED. ROAD DIST. NO. 1 ILLINOIS FED. AID PROJECT			CONTRACT NO. 60G36	