

F.A. RTE.	SECTION	COUNTY	TOTAL SHEETS	SHEET NO.
345/525	10 RS-9	KANE	28	1
FED. ROAD DIST. NO.	ILLINOIS	CONTRACT NO. 60G62		

STATE OF ILLINOIS  
DEPARTMENT OF TRANSPORTATION  
DIVISION OF HIGHWAYS

# PROPOSED HIGHWAY PLANS

FAP 345 /525 (US 20)  
MCHENRY/KANE CO. LINE (GETTY RD.) TO IL 47  
SECTION: 10 RS-9  
RESURFACING IMPROVEMENT  
KANE COUNTY  
C-91-518-09

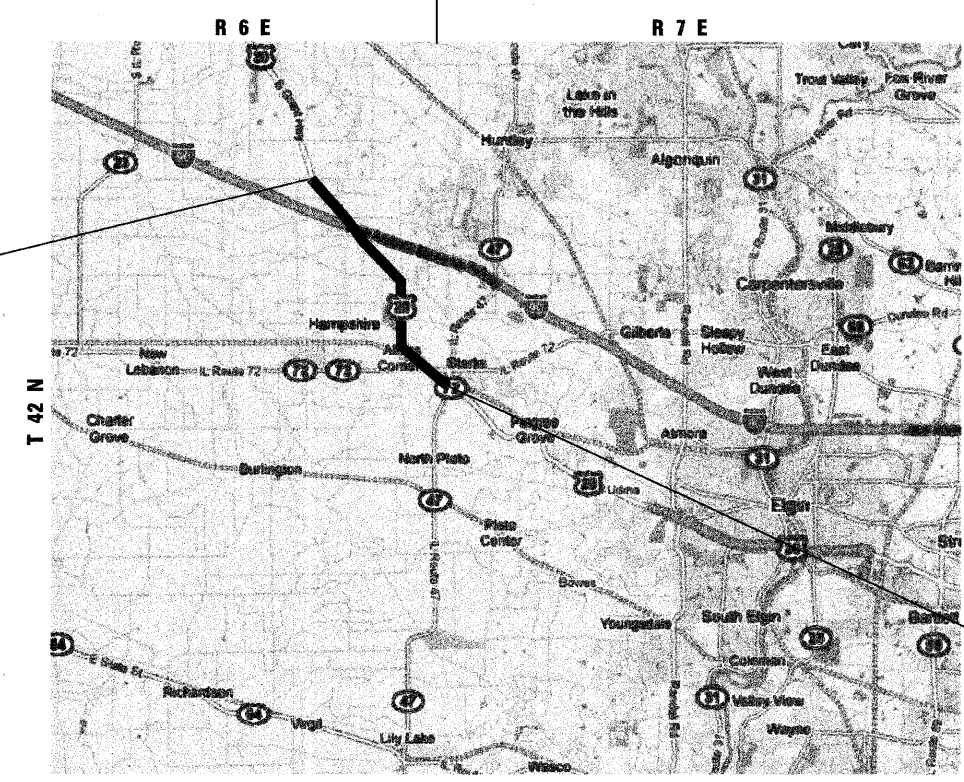
FOR INDEX OF SHEETS, SEE SHEET NO. 2

THE IMPROVEMENT IS LOCATED  
IN THE VILLAGE OF HAMPSHIRE



**STATION EQUATIONS**  
STA. 539 + 52.47 BACK = STA. 539 + 93.35 AHEAD  
STA. 692 + 96.84 BACK = STA. 10 + 00.00 AHEAD

PROJECT BEGINS  
STA. 383 + 18.82



TRAFFIC DATA:  
2006 ADT = 8,400  
POSTED SPEED LIMIT = 55 MPH

PROJECT ENDS  
STA. 14 + 96.61



EXPIRATION DATE 11-30-09  
DATE 4-16-09

STATE OF ILLINOIS  
DEPARTMENT OF TRANSPORTATION  
DIVISION OF HIGHWAYS

SUBMITTED APRIL 16, 2009  
Diana M. O'Keefe  
DEPUTY DIRECTOR OF HIGHWAYS, REGION ENGINEER

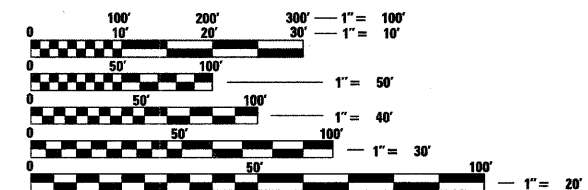
May 1, 2009  
Charles J. Dragsell  
ENGINEER OF DESIGN AND ENVIRONMENT

May 1, 2009  
Christine M. Reed  
DIRECTOR OF HIGHWAYS, CHIEF ENGINEER

PRINTED BY THE AUTHORITY  
OF THE STATE OF ILLINOIS

HAMPSHIRE AND RUTLAND TOWNSHIPS

GROSS LENGTH OF IMPROVEMENT = 31,434 LINEAL FEET = 5.95 MILES  
NET LENGTH OF IMPROVEMENT = 31,434 LINEAL FEET = 5.95 MILES



FULL SIZE PLANS HAVE BEEN PREPARED USING STANDARD  
ENGINEERING SCALES. REDUCED SIZED PLANS WILL NOT  
CONFORM TO STANDARD SCALES. IN MAKING MEASUREMENTS  
ON REDUCED PLANS, THE ABOVE SCALES MAY BE USED.

J.U.L.I.E.  
JOINT UTILITY LOCATION INFORMATION FOR EXCAVATION  
1-800-892-0123  
OR 811

**benesch**  
alfred benesch & company  
Engineers • Surveyors • Planners  
205 North Michigan Avenue, Suite 2400  
Chicago, Illinois 60601  
312-565-0450

CONTRACT NO. 60G62

CONSULTANT PROJECT ENGINEER: ISSAM RAYYAN (847) 705-4556