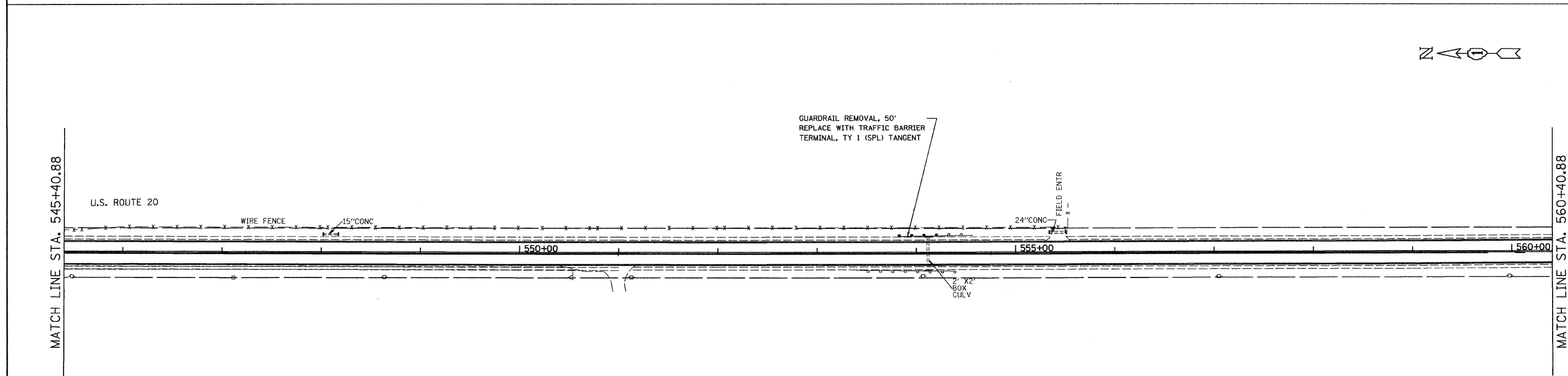


NOTE:
 PERMANENT PAVEMENT MARKING SHALL BE THERMOPLASTIC (OF THE EXTRUDED TYPE) AND SHOULD BE PLACED IN ACCORDANCE WITH "DISTRICT ONE TYPICAL PAVEMENT MARKING DETAILS"
 RAISED REFLECTIVE PAVEMENT MARKERS SHALL BE IN ACCORDANCE WITH THE DISTRICT ONE "TYPICAL APPLICATION RAISED REFLECTIVE PAVEMENT MARKERS DETAILS"



NOTE:
 PERMANENT PAVEMENT MARKING SHALL BE THERMOPLASTIC (OF THE EXTRUDED TYPE) AND SHOULD BE PLACED IN ACCORDANCE WITH "DISTRICT ONE TYPICAL PAVEMENT MARKING DETAILS"
 RAISED REFLECTIVE PAVEMENT MARKERS SHALL BE IN ACCORDANCE WITH THE DISTRICT ONE "TYPICAL APPLICATION RAISED REFLECTIVE PAVEMENT MARKERS DETAILS"

FILE NAME = ...\\p1ens\p1n60710pp&mrk6.dgn	USER NAME = mooleman	DESIGNED - TJJ	REVISED -
		DRAWN - IS	REVISED -
		CHECKED - JJT	REVISED -
		DATE - 04/16/09	REVISED -

**STATE OF ILLINOIS
 DEPARTMENT OF TRANSPORTATION**

ROADWAY & PAVEMENT MARKING PLANS US 20 - MCHENRY /KANE CO LINE (GETTY ROAD) TO ILL 47		F.A. RTE.	SECTION	COUNTY	TOTAL SHEETS	SHEET NO.
		345	10 RS-9	KANE	28	10
SCALE: 1" = 50'		SHEET NO. 10 OF 28 SHEETS		STA. 530+00.00 TO STA. 560+40.88		FED. ROAD DIST. NO. ILLINOIS FED. AID PROJECT
						CONTRACT NO. 60662