

F.A.U. RTE.	SECTION	COUNTY	TOTAL SHEETS	SHEET NO.
2678	3025 RS-2	COOK	17	1
FED. ROAD DIST. NO. 1	ILLINOIS	CONTRACT NO. 60G83		

STATE OF ILLINOIS
DEPARTMENT OF TRANSPORTATION
DIVISION OF HIGHWAYS

**PROPOSED
HIGHWAY PLANS**

FAU 2678 ELMHURST ROAD
SECTION: 3025 RS-2
ESTES AVENUE TO DEVON AVENUE
RESURFACING (3P)

COOK COUNTY
C-91-539-09

ELK GROVE TOWNSHIP
R. 11 E. R. 12 E.

FOR INDEX OF SHEETS, SEE SHEET NO. 2

DESIGN DESIGNATION:
SPEED LIMIT : 40 M.P.H. & 45 M.P.H.
2007 ADT = 15,000

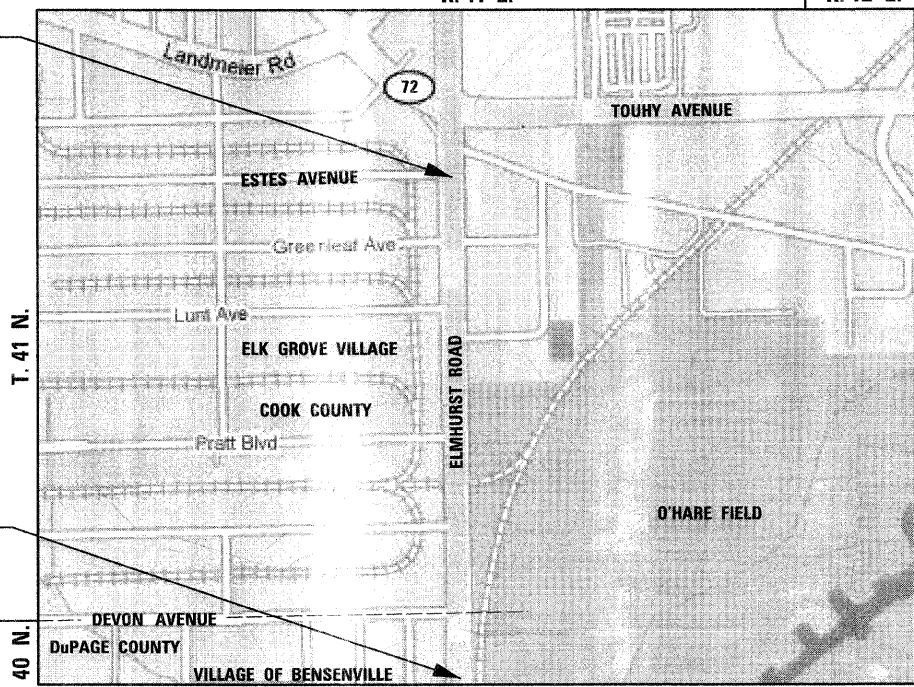
PROJECT LOCATED IN
ELK GROVE VILLAGE AND THE
VILLAGE OF BENSENVILLE

D-91-539-09

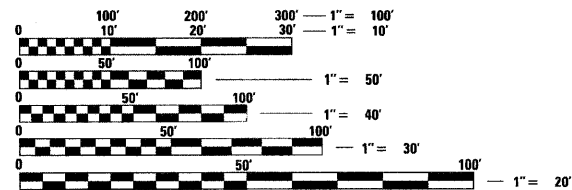


LOCATION OF SECTION INDICATED THIS: -

PROJECT ENDS
STA. 62 + 92



PROJECT BEGINS
STA. 10 + 58



FULL SIZE PLANS HAVE BEEN PREPARED USING STANDARD ENGINEERING SCALES. REDUCED SIZED PLANS WILL NOT CONFORM TO STANDARD SCALES. IN MAKING MEASUREMENTS ON REDUCED PLANS, THE ABOVE SCALES MAY BE USED.

J.U.L.I.E.
JOINT UTILITY LOCATING INFORMATION FOR EXCAVATORS
1-800-892-0123
OR 811

DISTRICT ONE - PLAN PREP ENGINEER:
KEN ENG (847) 705-4247

CONTRACT NO. 60G83

GROSS LENGTH OF PROJECT = 5,234 FEET = 0.991 MILES

NET LENGTH OF PROJECT = 5,234 FEET = 0.991 MILES

STATE OF ILLINOIS
DEPARTMENT OF TRANSPORTATION
DIVISION OF HIGHWAYS

SUBMITTED April 14, 2009

Diana M. O'Keefe DEPUTY DIRECTOR OF HIGHWAYS, REGION ONE ENGINEER

May 1, 2009
Charles J. Ingrassia ENGINEER OF DESIGN AND ENVIRONMENT

May 1, 2009
Christie M. Reed DIRECTOR OF HIGHWAYS, CHIEF ENGINEER



Birinder S. Sachdeva April 10, 2009
BIRINDER S. SACHDEVA, P.E. DATE
EXPIRES: 11-30-2009

CHRISTIAN ROGE & ASSOCIATES, INC.
ENGINEERS - PLANNERS - SURVEYORS
211 W. WACKER DRIVE CHICAGO, IL 60606
TELEPHONE: 312-372-2023

PRINTED BY THE AUTHORITY
OF THE STATE OF ILLINOIS