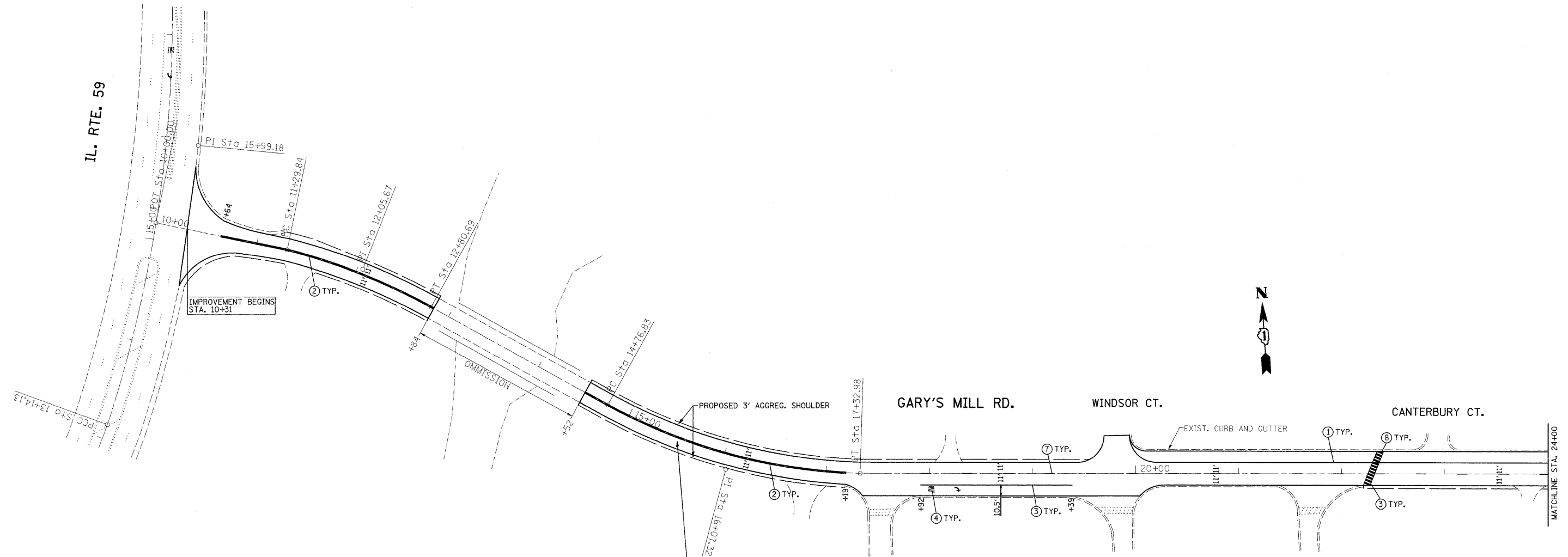


IL. RTE. 59



PROPOSED HOT-MIX ASPHALT SURFACE REMOVAL, 2 1/4"
 PROPOSED HOT-MIX ASPHALT SURFACE COURSE, MIX "D", N70, 1 1/2"
 PROPOSED POLYMERIZED LEVELING BINDER (MACHINE METHOD), IL-4.75, N50, 3/4"

PAVEMENT MARKING LEGEND

- ① 4" SKIP DASH LANE LINE- WHITE
- ② 4" DOUBLE YELLOW
- ③ 6" TURN LANE-WHITE
- ④ LETTERS & SYMBOLS-WHITE
- ⑤ 12" DIAGONALS-YELLOW @ 45°
- ⑥ 24" STOP BAR-WHITE
- ⑦ 4" EDGE LINE-WHITE

NOTES

ALL FINAL PAVEMENT MARKINGS SHALL BE THERMOPLASTIC (OF THE EXTRUDED TYPE) AND SHOULD BE PLACED IN ACCORDANCE WITH "DISTRICT ONE TYPICAL PAVEMENT MARKINGS" DETAIL, (TC-13).

ALL RAISED REFLECTIVE PAVEMENT MARKERS SHALL BE PLACED IN ACCORDANCE WITH THE DISTRICT ONE "TYPICAL APPLICATIONS RAISED REFLECTIVE PAVEMENT MARKER DETAIL." (TC-11).

FILE NAME =	USER NAME = abreuah	DESIGNED -	REVISED -
c:\pw_work\PW\DOT\ABREUAH\0137686\DI54309-shr-plan.dgn		DRAWN -	REVISED -
PLOT SCALE = 50.0000' / IN.		CHECKED -	REVISED -
PLOT DATE = 4/13/2009		DATE -	REVISED -

STATE OF ILLINOIS
 DEPARTMENT OF TRANSPORTATION

ROADWAY AND PAVEMENT MARKING PLAN
 GARY'S MILL RD. (IL. RTE. 59 - IL. RTE. 38)

SCALE: 1"=50' SHEET NO. OF SHEETS STA. TO STA.

F.A.U. RTE.	SECTION	COUNTY	TOTAL SHEETS	SHEET NO.
3549	2 RS-2	DUPAGE	15	5
CONTRACT NO. 60G87			FED. ROAD DIST. NO. 1 ILLINOIS FED. AID PROJECT	