

STATE OF ILLINOIS
 DEPARTMENT OF TRANSPORTATION
 DIVISION OF HIGHWAYS

F.A.I. RTE.	SECTION	COUNTY	TOTAL SHEETS	SHEET NO.
55	99-2AC-3RS-1	WILL	14	1
D-91-555-09		ILLINOIS	CONTRACT NO. 60G99	

FOR INDEX OF SHEETS, SEE SHEET NO. 2

PROPOSED HIGHWAY PLANS

F.A.I. 55 / I-55 (W. FRONTAGE RD.)

.1 MILE S OF BLACK ROAD TO 1.3 MILES N OF BLACK ROAD

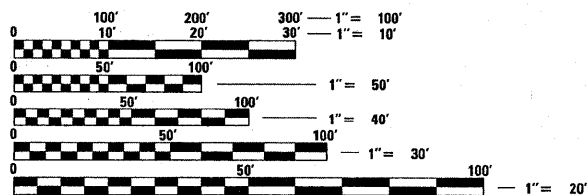
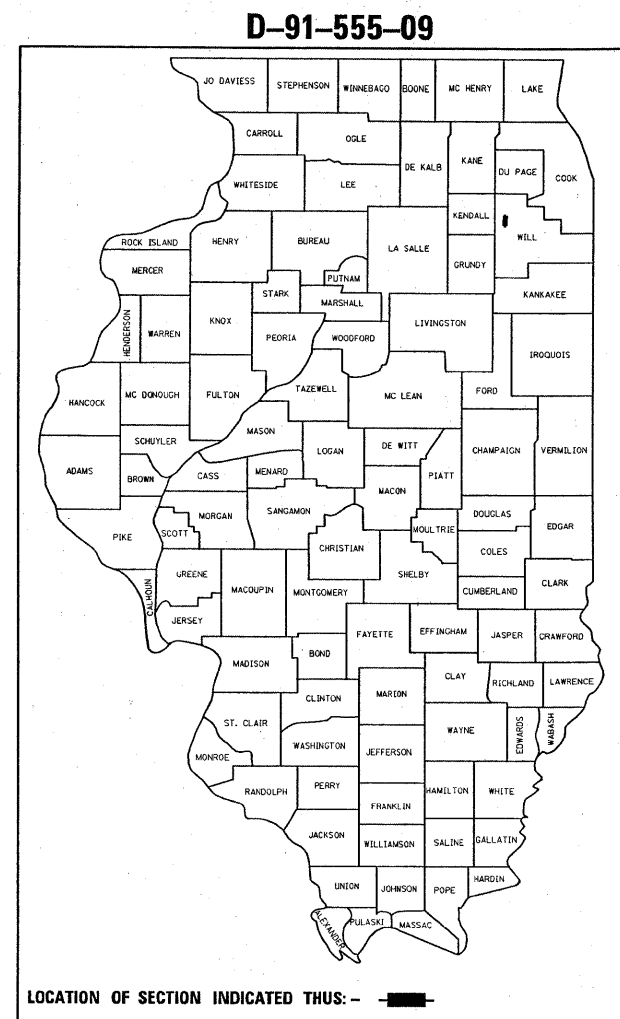
SECTION: 99-2AC-3RS-1

RESURFACING

WILL COUNTY

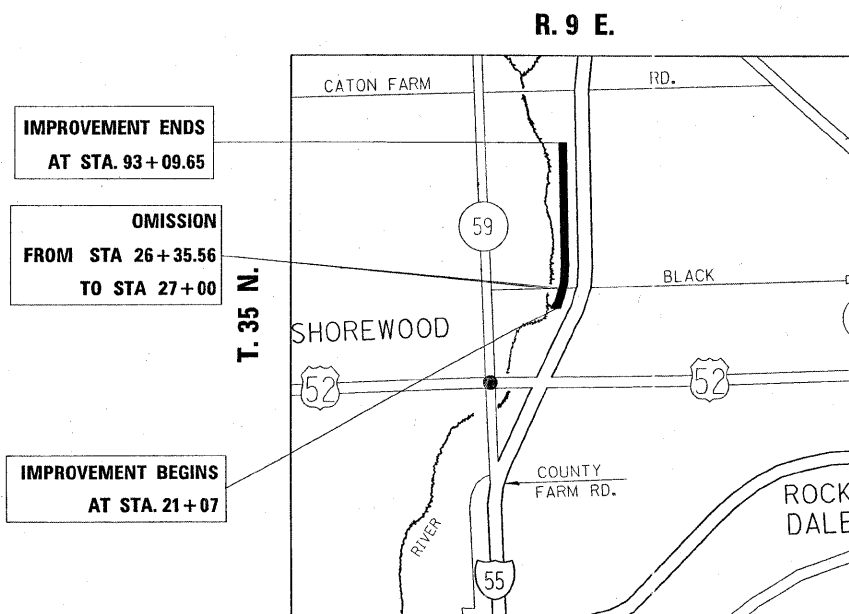
C-91-555-09

**IMPROVEMENT LOCATED IN
 THE CITY OF JOLIET**



FULL SIZE PLANS HAVE BEEN PREPARED USING STANDARD ENGINEERING SCALES. REDUCED SIZED PLANS WILL NOT CONFORM TO STANDARD SCALES. IN MAKING MEASUREMENTS ON REDUCED PLANS, THE ABOVE SCALES MAY BE USED.

J.U.L.I.E.
 JOINT UTILITY LOCATION INFORMATION FOR EXCAVATION
 1-800-892-0123
 OR 811



IMPROVEMENT ENDS
 AT STA. 93+09.65

OMISSION
 FROM STA 26+35.56
 TO STA 27+00

IMPROVEMENT BEGINS
 AT STA. 21+07



TRAFFIC DATA:
 2008 ADT - 700
 SPEED LIMIT - 55 MPH

PROJECT ENGINEER: JENPAI CHANG 847-705-4432
 PROJECT MANAGER: KEN ENG
 CONTRACT NO. 60G99

GROSS LENGTH OF IMPROVEMENT = 7202.65 FT. = 1.36 MILE
 NET LENGTH OF IMPROVEMENT = 7138.21 FT. = 1.35 MILE

STATE OF ILLINOIS
 DEPARTMENT OF TRANSPORTATION
 DIVISION OF HIGHWAYS

SUBMITTED April 20 2009

Dan Oll
 DEPUTY DIRECTOR OF HIGHWAYS, REGION ENGINEER

May 1, 2009
Charles J. Ingersoll
 ENGINEER OF DESIGN AND ENVIRONMENT

May 1, 2009
Christine M. Reed
 DIRECTOR OF HIGHWAYS, CHIEF ENGINEER

**PRINTED BY THE AUTHORITY
 OF THE STATE OF ILLINOIS**