

STATE OF ILLINOIS  
DEPARTMENT OF TRANSPORTATION  
DIVISION OF HIGHWAYS

**PROPOSED  
HIGHWAY PLANS**

F.A.U. 1332 /2865 (SHERIDAN ROAD /SOUTH BOULEVARD)  
SECTION: 2009-049 RS  
NORTH OF JUNEWAY TERRACE TO SOUTH BOULEVARD &  
SHERIDAN ROAD TO CHICAGO AVENUE  
RESURFACING (3P)

COOK COUNTY  
C-91-565-09

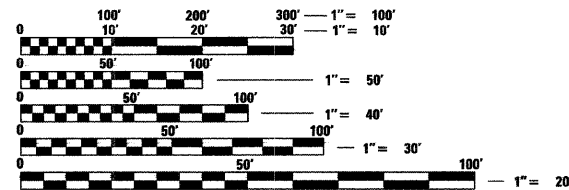
F.A.U. RTE.	SECTION	COUNTY	TOTAL SHEETS	SHEET NO.
1332/2865	2009-049 RS	COOK	19	1
FED. ROAD DIST. NO. 1	ILLINOIS	CONTRACT NO.	60H09	

FOR INDEX OF SHEETS, SEE SHEET NO. 2

THESE IMPROVEMENTS ARE LOCATED  
WITHIN THE CITY OF EVANSTON

**TRAFFIC DATA**

2006 ADT - 36,800  
POSTED SPEED LIMIT - 30 MPH



FULL SIZE PLANS HAVE BEEN PREPARED USING STANDARD  
ENGINEERING SCALES. REDUCED SIZED PLANS WILL NOT  
CONFORM TO STANDARD SCALES. IN MAKING MEASUREMENTS  
ON REDUCED PLANS, THE ABOVE SCALES MAY BE USED.

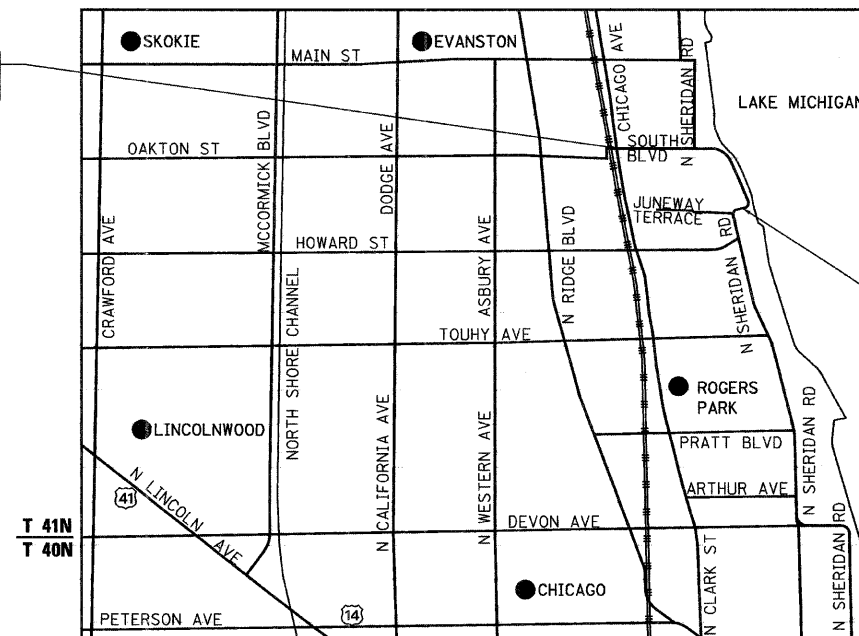
J.U.L.I.E.  
JOINT UTILITY LOCATION INFORMATION FOR EXCAVATION  
1-800-892-0123  
OR 811

Ciorba Group, Inc.

DESIGN FIRM  
REGISTRATION NUMBER

184-001016

CONSULTING ENGINEERS  
SUITE 402, 5507 NORTH CUMBERLAND AVE  
CHICAGO, ILLINOIS 60656 :: (773) 775-4009



R 13E | R 14E

EVANSTON TOWNSHIP

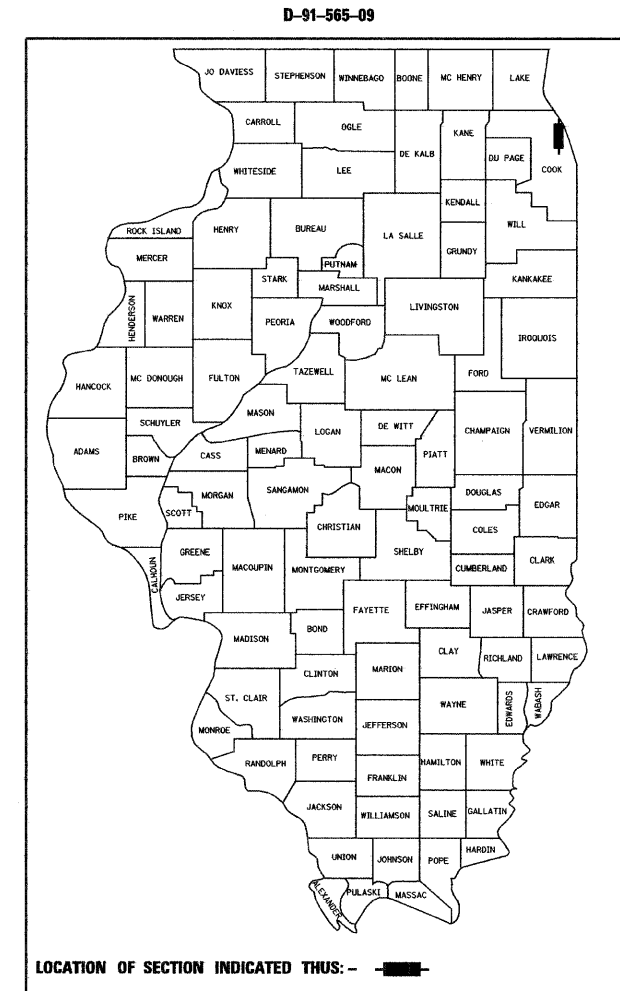
LOCATION MAP

1" = 2,500'

GROSS & NET LENGTH OF PROJECT = 4,633 FT = 0.88 MI.



DATE: 4/13/2009  
SEAL EXPIRES: 11/30/2009



LOCATION OF SECTION INDICATED THUS: - [thick black line] -

STATE OF ILLINOIS  
DEPARTMENT OF TRANSPORTATION  
DIVISION OF HIGHWAYS

SUBMITTED APRIL 14, 2009

Debra M. O'Keefe  
DEPUTY DIRECTOR OF HIGHWAYS, REGION ENGINEER

May 1, 2009

Charles J. Ingersoll  
ENGINEER OF DESIGN AND ENVIRONMENT

May 1, 2009

Christine M. Reed  
DIRECTOR OF HIGHWAYS, CHIEF ENGINEER

PRINTED BY THE AUTHORITY  
OF THE STATE OF ILLINOIS

CONTRACT NO. 60H09

DISTRICT 1 DESIGN PLAN PREPARATION ENGINEER: K. ENG (847)705-4247