

STATE OF ILLINOIS  
DEPARTMENT OF TRANSPORTATION  
DIVISION OF HIGHWAYS

**PROPOSED  
HIGHWAY PLANS**

F.A.U. 1332 /2865 (SHERIDAN ROAD /SOUTH BOULEVARD)  
SECTION: 2009-049 RS  
NORTH OF JUNEWAY TERRACE TO SOUTH BOULEVARD &  
SHERIDAN ROAD TO CHICAGO AVENUE  
RESURFACING (3P)

COOK COUNTY  
C-91-565-09

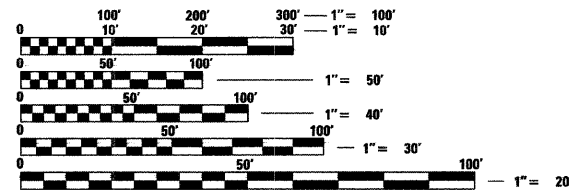
F.A.U. RTE.	SECTION	COUNTY	TOTAL SHEETS	SHEET NO.
1332/2865	2009-049 RS	COOK	19	1
FED. ROAD DIST. NO. 1	ILLINOIS	CONTRACT NO.	60H09	

FOR INDEX OF SHEETS, SEE SHEET NO. 2

THESE IMPROVEMENTS ARE LOCATED  
WITHIN THE CITY OF EVANSTON

**TRAFFIC DATA**

2006 ADT - 36,800  
POSTED SPEED LIMIT - 30 MPH



FULL SIZE PLANS HAVE BEEN PREPARED USING STANDARD  
ENGINEERING SCALES. REDUCED SIZED PLANS WILL NOT  
CONFORM TO STANDARD SCALES. IN MAKING MEASUREMENTS  
ON REDUCED PLANS, THE ABOVE SCALES MAY BE USED.

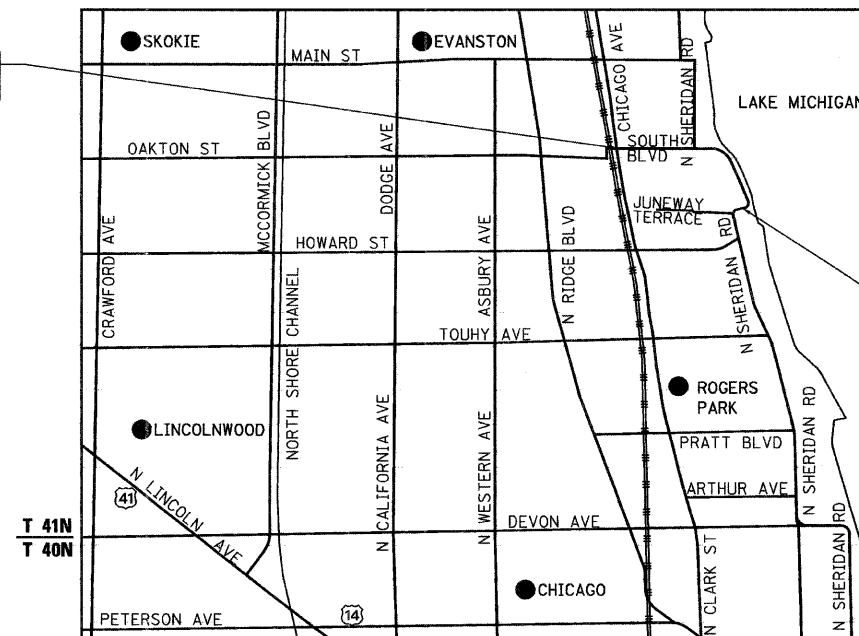
J.U.L.I.E.  
JOINT UTILITY LOCATION INFORMATION FOR EXCAVATION  
1-800-892-0123  
OR 811

Ciorba Group, Inc.

DESIGN FIRM  
REGISTRATION NUMBER

184-001016

CONSULTING ENGINEERS  
SUITE 402, 5507 NORTH CUMBERLAND AVE  
CHICAGO, ILLINOIS 60656 ☎ (773) 775-4009



R 13E | R 14E

EVANSTON TOWNSHIP

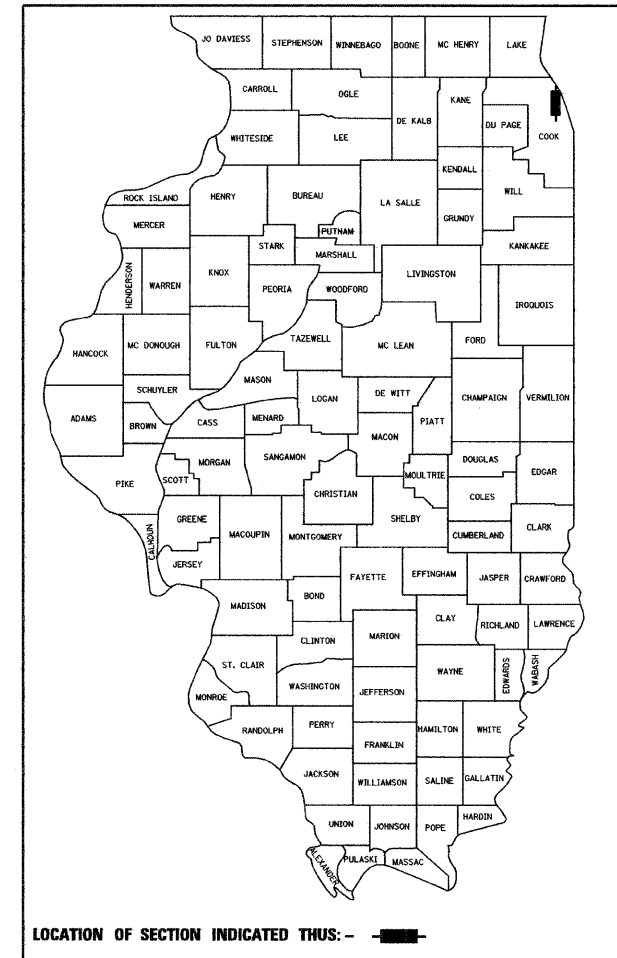
LOCATION MAP

1" = 2,500'

GROSS & NET LENGTH OF PROJECT = 4,633 FT = 0.88 MI.



DATE: 4/13/2009  
SEAL EXPIRES: 11/30/2009



LOCATION OF SECTION INDICATED THUS: - [black rectangle] -

STATE OF ILLINOIS  
DEPARTMENT OF TRANSPORTATION  
DIVISION OF HIGHWAYS

SUBMITTED APRIL 14, 2009

Debra M. O'Keefe  
DEPUTY DIRECTOR OF HIGHWAYS, REGION ENGINEER

May 1, 2009

Charles J. Ingersoll  
ENGINEER OF DESIGN AND ENVIRONMENT

May 1, 2009

Christine M. Reed  
DIRECTOR OF HIGHWAYS, CHIEF ENGINEER

PRINTED BY THE AUTHORITY  
OF THE STATE OF ILLINOIS

CONTRACT NO. 60H09

DISTRICT 1 DESIGN PLAN PREPARATION ENGINEER: K. ENG (847)705-4247

INDEX OF SHEETS

SHEET NO DESCRIPTION

- 1 COVER SHEET
- 2 INDEX OF SHEETS, STATE STANDARDS AND GENERAL NOTES
- 3 SUMMARY OF QUANTITIES
- 4-6 TYPICAL SECTIONS
- 7-8 PROPOSED ROADWAY AND PAVEMENT MARKING PLAN
- 9 DETECTOR LOOP REPLACEMENT PLAN
- 10 DETAILS FOR FRAMES AND LIDS ADJUSTMENT WITH MILLING (BD-8)
- 11 PAVEMENT PATCHING FOR HMA SURFACED PAVEMENT (BD-22)
- 12 CURB AND GUTTER REMOVAL AND REPLACEMENT (BD-24)
- 13 BUTT JOINT AND HMA TAPER DETAILS (BD-32)
- 14 HMA TAPER AT EDGE OF P.C.C. PAVEMENT (BD-33)
- 15 TRAFFIC CONTROL AND PROTECTION FOR SIDE ROADS, INTERSECTIONS, AND DRIVEWAYS (TC-10)
- 16 DISTRICT ONE TYPICAL PAVEMENT MARKINGS (TC-13)
- 17 PAVEMENT MARKING LETTERS AND SYMBOLS FOR TRAFFIC STAGING (TC-16)
- 18 ARTERIAL ROAD INFORMATION SIGN (TC-22)
- 19 DISTRICT 1 DETECTOR LOOP INSTALLATION DETAILS FOR ROADWAY RESURFACING (TS-07)

STATE STANDARDS

- 000001-05 STANDARD SYMBOLS, ABBREVIATIONS, AND PATTERNS
- 442201-03 CLASS C AND D PATCHES
- 602001-01 CATCH BASIN TYPE A
- 602601-02 PRECAST BASIN REINFORCED CONCRETE FLAT SLAB TOP
- 604001-03 FRAME AND LIDS, TYPE 1
- 606001-04 CONCRETE CURB TYPE B AND COMBINATION CONCRETE CURB AND GUTTER
- 606301-04 PC CONCRETE ISLANDS AND MEDIANS
- 642001-01 SHOULDER RUMBLE STRIPS
- 701301-03 LANE CLOSURE, 2L, 2W, SHORT TIME OPERATIONS
- 701311-03 LANE CLOSURE, 2L, 2W, MOVING DAY OPERATIONS-DAY ONLY
- 701601-04 URBAN LANE CLOSURE MULTI LANE, 1W OR 2W WITH NONTRAVERSABLE MEDIAN
- 701606-06 URBAN LANE CLOSURE, MULTI LANE, 2W WITH MOUNTABLE MEDIAN
- 701701-06 URBAN LANE CLOSURE, MULTILANE INTERSECTION
- 701801-04 LANE CLOSURE MULTILANE 1W OR 2W CROSSWALK OR SIDEWALK CLOSURE
- 701901-01 TRAFFIC CONTROL DEVICES
- 780001-02 TYPICAL PAVEMENT MARKINGS
- 886001-01 DETECTOR LOOP INSTALLATIONS
- 886006-01 TYPICAL LAYOUTS FOR DETECTION LOOPS

GENERAL NOTES

1. BEFORE STARTING ANY EXCAVATION, THE CONTRACTOR SHALL CALL "JULIE" AT 800-892-0123 OR 811 FOR FIELD LOCATIONS OF BURIED ELECTRIC, TELEPHONE, AND GAS FACILITIES. (48 HOUR NOTIFICATION IS REQUIRED)
2. 10 FEET (3 METER) TRANSITIONS SHALL BE USED TO MATCH PROPOSED CURB AND GUTTER AND MEDIAN ITEMS OF WORK TO EXISTING CURB AND GUTTER AND MEDIANS IN THE FIELD UNLESS OTHERWISE SHOWN. THE TRANSITIONS SHALL BE PAID FOR AT THE CONTRACT UNIT PRICE FOR THE PROPOSED ITEMS OF WORK SPECIFIED.
3. THE CONTRACTOR SHALL COORDINATE CONSTRUCTION ACTIVITIES WITH UTILITY COMPANIES.
4. THE CONTRACTOR WILL NOT BE ALLOWED TO SET UP A YARD OR FIELD OFFICE ON STATE PROPERTY WITHOUT WRITTEN PERMISSION FROM THE DEPARTMENT.
5. WHEN ARTIFICIAL LIGHTING IS USED IN NIGHT OPERATIONS THE CONTRACTOR SHALL EXERCISE THE UTMOST PRECAUTIONS IN PREVENTING ADVERSE VISIBILITY TO THE MOTORING PUBLIC AND ADJOINING RESIDENTIAL AREAS.
6. THE FOLLOWING RATES OF APPLICATION HAVE BEEN ASSUMED IN CALCULATING PLAN QUANTITIES:
 

BITUMINOUS MATERIALS (PRIME COAT)	0.0004 TONS/SQ YD
POLYMERIZED HOT-MIX ASPHALT SURFACE COURSE	112 LBS/SQ YD/INCH
POLYMERIZED LEVELING BINDER (MACHINE METHOD)	105 LBS/SQ YD/INCH
7. THE ENGINEER SHALL CONTACT THE TRAFFIC CONTROL SUPERVISORS AT (847) 705-4470 A MINIMUM OF 72 HOURS PRIOR TO THE START OF WORK.
8. TWO WEEKS PRIOR TO PLACEMENT OF PERMANENT PAVEMENT MARKINGS THE ENGINEER SHALL CONTACT DEBBI HANLON, AREA TRAFFIC FIELD ENGINEER, AT (847) 438-2300.
9. WHEN MILLED PAVEMENT IS OPEN TO TRAFFIC THE MAXIMUM GRADE DIFFERENTIAL BETWEEN PASSES OF THE MILLING MACHINE SHALL NOT EXCEED 1 1/2" (40 MM) WHERE THE SPEED LIMIT IS 45 MPH (80 KM/H) OR LESS AND 1" (25 MM) WHERE THE SPEED LIMIT IS GREATER THAN 45 MPH (80 KM/H). WITH WRITTEN APPROVAL FROM THE ENGINEER, A MAXIMUM GRADE DIFFERENTIAL OF 3" (75 MM) MAY BE ALLOWED IF THE EDGE OF THE MILLING IS SLOPED A MINIMUM 3:1 (H:V).
10. BUTT JOINTS WILL BE INSTALLED AT THE END OF ALL RESURFACING (WHERE RESURFACING MEETS EXISTING PAVEMENT). IN ACCORDANCE WITH THE "BUTT JOINT AND HMA TAPER DETAILS" SHEET INCLUDED IN THE PLANS, UNLESS OTHERWISE SPECIFIED.
11. FOR PAVEMENT MARKING, REFER TO DISTRICT ONE TYPICAL MARKINGS FOR DETAILS SHOWN.
12. MATCH EXISTING PAVEMENT MARKINGS AT PROJECT LIMITS.
13. NO OVERNIGHT LANE CLOSURES SHALL BE ALLOWED.
14. ALL PATCHES OPENED ON A PARTICULAR DAY MUST BE FILLED THAT DAY TO THE TOP OF THE MILLED PAVEMENT SURFACE.
15. IDOT TRAFFIC SIGNAL AND SYSTEM DETECTION LOOPS ARE PRESENT AT SHERIDAN ROAD AND CHICAGO AVENUE. THE CONTRACTOR MUST NOTIFY THE IDOT AREA TRAFFIC SIGNAL MAINTENANCE AND OPERATIONS ENGINEER AT (847) 705-4139 AND THE DEPARTMENT'S ELECTRICAL MAINTENANCE CONTRACTOR PRIOR TO BEGINNING WORK, AT WHICH TIME ARRANGEMENTS WILL BE MADE TO ADJUST THE TRAFFIC CONTROLLER TIMING TO COMPENSATE FOR THE ABSENCE OF DETECTION. REPLACEMENT OF LOOPS DOES NOT REQUIRE MAINTENANCE TRANSFER, BUT DOES REQUIRE NOTIFICATION OF WORK AND INSPECTION. COORDINATION WITH THE DISTRICT IS CONSIDERED INCIDENTAL TO THIS CONTRACT.
16. CONTINGENCY QUANTITIES HAVE BEEN INCLUDED FOR THE FOLLOWING ITEMS TO BE USED AT THE DIRECTION OF THE ENGINEER:
  - 60406000 FRAMES AND LIDS, TYPE 1, OPEN LID - 19 EACH
  - 60406100 FRAMES AND LIDS, TYPE 1, CLOSED LID - 10 EACH

FILE NAME = N:\PROJ\3368\3368-14\Design\Proposed\Plan\3368-14-02-General Notes.dgn



**Ciorba Group, Inc.**  
CONSULTING ENGINEERS  
6507 North Cumberland Avenue, Suite 402  
Chicago, Illinois 60656  
Tel. 773.775.4009 Fax 773.775.4014

USER NAME = elou	DESIGNED MBT	REVISED -
DRAWN DKD	REVISED -	
PLOT SCALE = 1:8000' / IN.	CHECKED WBL	REVISED -
PLOT DATE = 4/20/2009	DATE 4/20/2009	REVISED -

**STATE OF ILLINOIS  
DEPARTMENT OF TRANSPORTATION**

**SHERIDAN ROAD /SOUTH BOULEVARD  
JUNEWAY TERRACE TO SOUTH BLVD & SHERIDAN RD TO CHICAGO AVE  
INDEX OF SHEETS, STATE STANDARDS & GENERAL NOTES**

F.A.J. RTE. 1332/2865	SECTION 2009-049 RS	COUNTY COOK	TOTAL SHEETS 19	SHEET NO. 2
CONTRACT NO. 60H09			FED. ROAD DIST. NO. 1   ILLINOIS FED. AID PROJECT	

SCALE: SHEET NO. 2 OF 19 SHEETS STA. TO STA.

SUMMARY OF QUANTITIES			URBAN 100% STATE	CONSTRUCTION TYPE CODE
CODE NO.	DESCRIPTION	UNIT	TOTAL QUANTITY	ROADWAY 1000
20200100	EARTH EXCAVATION	CU YD	300	300
35501316	HOT-MIX ASPHALT BASE COURSE, 8"	SQ YD	40	40
35800200	AGGREGATE BASE REPAIR	TON	390	390
40201000	AGGREGATE FOR TEMPORARY ACCESS	TON	30	30
40600200	BITUMINOUS MATERIALS (PRIME COAT)	TON	8	8
40600300	AGGREGATE (PRIME COAT)	TON	40	40
40600400	MIXTURE FOR CRACKS, JOINTS, AND FLANGEWAYS	TON	2	2
40600535	LEVELING BINDER (HAND METHOD), N70	TON	5	5
40600895	CONSTRUCTING TEST STRIP	EACH	2	2
40600982	HOT-MIX ASPHALT SURFACE REMOVAL - BUTT JOINT	SQ YD	180	180
40600985	PORTLAND CEMENT CONCRETE SURFACE REMOVAL - BUTT JOINT	SQ YD	390	390
40600990	TEMPORARY RAMP	SQ YD	280	280
40603310	HOT-MIX ASPHALT SURFACE COURSE, MIX "C", N50	TON	4	4
40603595	POLYMERIZED HOT-MIX ASPHALT SURFACE COURSE, MIX "F", N90	TON	2,600	2,600
42300400	PORTLAND CEMENT CONCRETE DRIVEWAY PAVEMENT, 8 INCH	SQ YD	10	10
42400300	PORTLAND CEMENT CONCRETE SIDEWALK 6 INCH	SQ FT	50	50
44000159	HOT-MIX ASPHALT SURFACE REMOVAL, 2 1/2"	SQ YD	9,800	9,800
44000200	DRIVEWAY PAVEMENT REMOVAL	SQ YD	50	50
44000600	SIDEWALK REMOVAL	SQ FT	50	50
44001700	COMBINATION CONCRETE CURB AND GUTTER REMOVAL AND REPLACEMENT	FOOT	2,110	2,110
44003100	MEDIAN REMOVAL	SQ FT	310	310
44003510	MEDIAN REMOVAL PARTIAL DEPTH	SQ FT	3,020	3,020
44201765	CLASS D PATCHES, TYPE II, 10 INCH	SQ YD	1,890	1,890
44201769	CLASS D PATCHES, TYPE III, 10 INCH	SQ YD	500	500
44201771	CLASS D PATCHES, TYPE IV, 10 INCH	SQ YD	630	630
44201777	CLASS D PATCHES, TYPE II, 11 INCH	SQ YD	700	700
44201781	CLASS D PATCHES, TYPE III, 11 INCH	SQ YD	200	200
44201783	CLASS D PATCHES, TYPE IV, 11 INCH	SQ YD	550	550
55039700	STORM SEWERS TO BE CLEANED	FOOT	1,400	1,400
60252800	CATCH BASINS TO BE RECONSTRUCTED	EACH	1	1
60300305	FRAMES AND LIDS TO BE ADJUSTED	EACH	75	75

\* DENOTES SPECIALTY ITEM

SUMMARY OF QUANTITIES			URBAN 100% STATE	CONSTRUCTION TYPE CODE
CODE NO.	DESCRIPTION	UNIT	TOTAL QUANTITY	ROADWAY 1000
60300310	FRAMES AND LIDS TO BE ADJUSTED (SPECIAL)	EACH	70	70
60406000	FRAMES AND LIDS, TYPE 1, OPEN LID	EACH	19	19
60406100	FRAMES AND LIDS, TYPE 1, CLOSED LID	EACH	10	10
60619600	CONCRETE MEDIAN, TYPE SB-6.12	SQ FT	310	310
67000400	ENGINEER'S FIELD OFFICE, TYPE A	CAL MO	6	6
67100100	MOBILIZATION	L SUM	1	1
70102625	TRAFFIC CONTROL AND PROTECTION, STANDARD 701606	L SUM	1	1
70102630	TRAFFIC CONTROL AND PROTECTION, STANDARD 701601	L SUM	1	1
70102635	TRAFFIC CONTROL AND PROTECTION, STANDARD 701701	L SUM	1	1
70102640	TRAFFIC CONTROL AND PROTECTION, STANDARD 701801	L SUM	1	1
70300100	SHORT-TERM PAVEMENT MARKING	FOOT	4,170	4,170
70300210	TEMPORARY PAVEMENT MARKING - LETTERS AND SYMBOLS	SQ FT	150	150
70300220	TEMPORARY PAVEMENT MARKING - LINE 4"	FOOT	11,500	11,500
70300240	TEMPORARY PAVEMENT MARKING - LINE 6"	FOOT	1,500	1,500
70300260	TEMPORARY PAVEMENT MARKING - LINE 12"	FOOT	300	300
70300280	TEMPORARY PAVEMENT MARKING - LINE 24"	FOOT	300	300
70301000	WORK ZONE PAVEMENT MARKING REMOVAL	SQ FT	1,900	1,900
* 78000100	THERMOPLASTIC PAVEMENT MARKING - LETTERS AND SYMBOLS	SQ FT	50	50
* 78000200	THERMOPLASTIC PAVEMENT MARKING - LINE 4"	FOOT	7,100	7,100
* 78000400	THERMOPLASTIC PAVEMENT MARKING - LINE 6"	FOOT	500	500
* 78000600	THERMOPLASTIC PAVEMENT MARKING - LINE 12"	FOOT	100	100
* 78000650	THERMOPLASTIC PAVEMENT MARKING - LINE 24"	FOOT	100	100
* 78100100	RAISED REFLECTIVE PAVEMENT MARKER	EACH	190	190
* 88600600	DETECTOR LOOP REPLACEMENT	FOOT	1,500	1,500
X0322256	TEMPORARY INFORMATION SIGNING	SQ FT	51	51
X4067107	POLYMERIZED LEVELING BINDER (MACHINE METHOD), IL-4.75, N50	TON	1,400	1,400
X4400100	PORTLAND CEMENT CONCRETE REMOVAL (VARIABLE DEPTH)	SQ YD	3,540	3,540
X4421000	PARTIAL DEPTH PATCHING	TON	350	350
X4422030	PARTIAL DEPTH REMOVAL 3"	SQ YD	1,980	1,980
Z0018500	DRAINAGE STRUCTURES TO BE CLEANED	EACH	95	95
Z0055400	RUMBLE STRIP	FOOT	600	600

FILE NAME = n:\pro\3368\3368\_14\design\proposals\3368\_14\_03-Quantities.dgn



**Ciorba Group, Inc.**  
CONSULTING ENGINEERS  
5507 North Cumberland Avenue, Suite 402  
Chicago, Illinois 60658  
Tel. 773.775.4009 Fax 773.775.4014

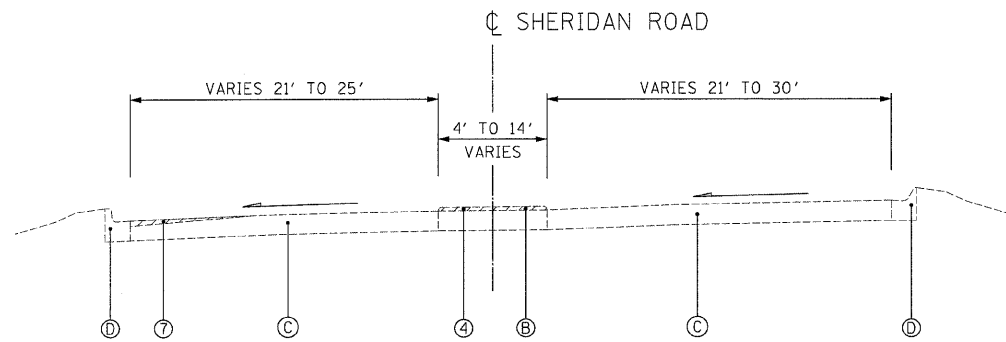
USER NAME = alou	DESIGNED MBT	REVISED -
PLOT SCALE = 1:2000' / IN.	DRAWN DKD	REVISED -
PLOT DATE = 4/28/2009	CHECKED WBL	REVISED -
DATE 4/20/2009	DATE 4/20/2009	REVISED -

STATE OF ILLINOIS  
DEPARTMENT OF TRANSPORTATION

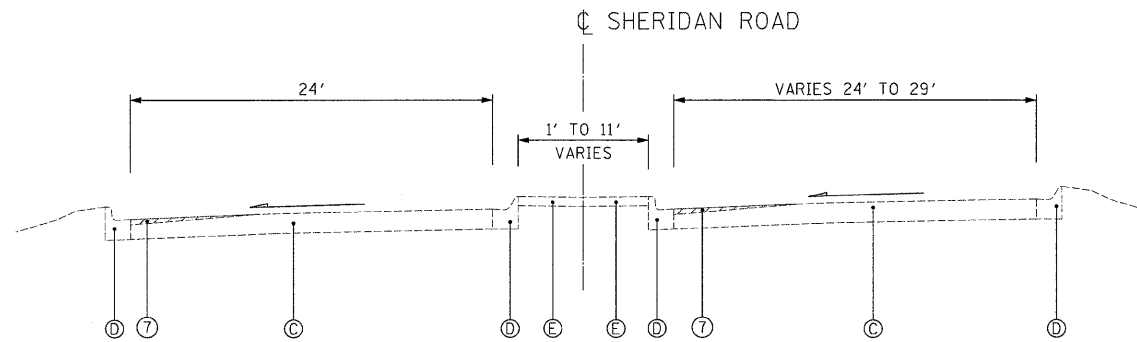
SHERIDAN ROAD /SOUTH BOULEVARD  
JUNEWAY TERRACE TO SOUTH BLVD & SHERIDAN RD TO CHICAGO AVE  
SUMMARY OF QUANTITIES

SCALE: SHEET NO. 3 OF 19 SHEETS STA. TO STA.

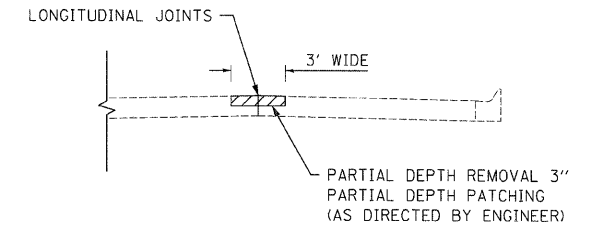
F.A.J. RTE. 1332/2865	SECTION 2009-049 RS	COUNTY COOK	TOTAL SHEETS 19	SHEET NO. 3
FED. ROAD DIST. NO. 1 (ILLINOIS) FED. AID PROJECT			CONTRACT NO. 60H09	



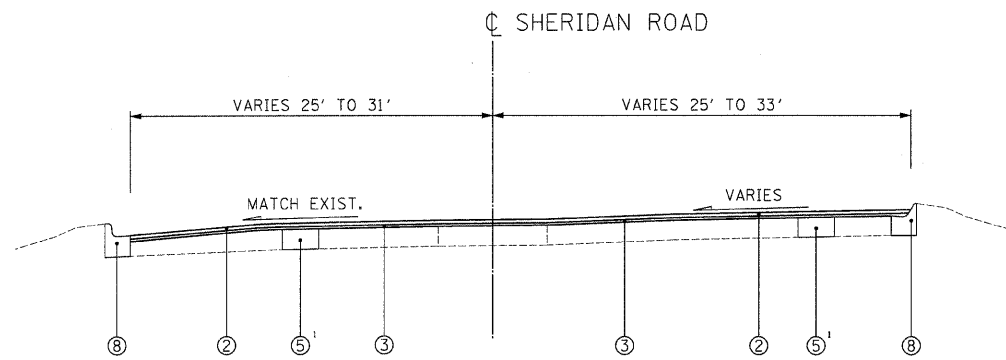
EXISTING TYPICAL SECTION  
STA. 188+80 TO STA. 189+70  
STA. 206+20 TO STA. 209+80



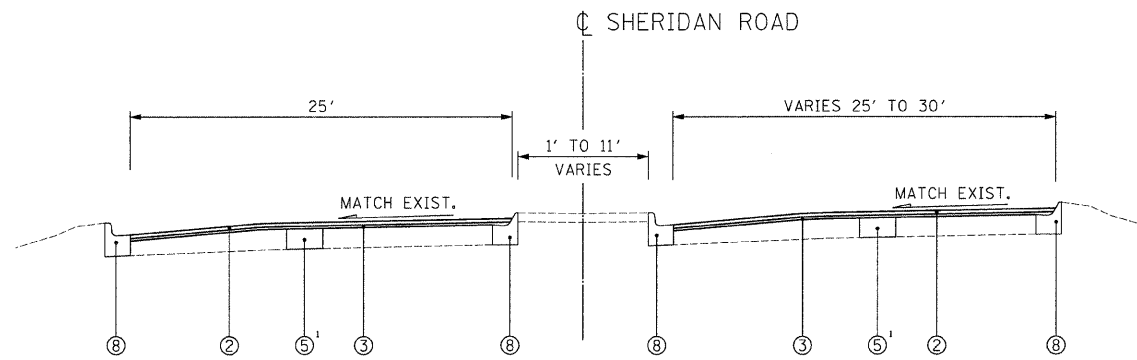
EXISTING TYPICAL SECTION  
STA. 189+70 TO STA. 193+50  
STA. 202+00 TO STA. 206+20



PARTIAL DEPTH PATCHING DETAIL  
STA. 188+80 TO STA. 215+30



PROPOSED TYPICAL SECTION  
STA. 188+80 TO STA. 189+70  
STA. 206+20 TO STA. 209+80



PROPOSED TYPICAL SECTION  
STA. 189+70 TO STA. 193+50  
STA. 202+00 TO STA. 206+20

HOT-MIX ASPHALT MIXTURE REQUIREMENTS CHART

OPERATIONS	MIXTURE TYPE	AC TYPE	PERCENT AIR VOIDS
ROADWAY RESURFACING	POLYMERIZED HOT-MIX ASPHALT SURFACE COURSE, MIX "F", N90, 1 3/4"	SBS/SBR PG 70-22	4% @ 90 GYR
	POLYMERIZED LEVELING BINDER (MACHINE METHOD), IL-4.75, N50, 3/4"	SBS/SBR PG 76-28/-22	4% @ 50 GYR
MAINTENANCE OF TRAFFIC	LEVELING BINDER (HAND METHOD), N70	PG 64-22	4% @ 70 GYR
PAVEMENT PATCHING	CLASS D PATCHES, 10" (HMA BINDER IL-19 MM)	PG 64-22	4% @ 70 GYR
	CLASS D PATCHES, 11" (HMA BINDER IL-19 MM)	PG 64-22	4% @ 70 GYR
	PARTIAL DEPTH PATCHING, 3" (HMA BINDER IL-19 MM)	PG 64-22	4% @ 70 GYR
DRIVES BEHIND CURB	HOT-MIX ASPHALT SURFACE COURSE, MIX "C", N50 (IL-9.5MM) 2" THICKNESS	PG 64-22	4% @ 50 GYR
	HOT-MIX ASPHALT BASE COURSE, 8" (HMA BINDER IL-19 MM)	PG 64-22	4% @ 50 GYR

THE UNIT WEIGHT USED TO CALCULATE ALL HMA SURFACE MIXTURE QUANTITIES IS 112 LBS/SQ YD/IN.

\* WHEN RAP EXCEEDS 20%, THE NEW ASPHALT BINDER IN THE MIX SHALL BE PG 58-22.

EXISTING CONDITIONS:

- ① HOT-MIX ASPHALT SURFACE AND BINDER COURSE, 5" AND VARIES
- ② CORRUGATED CONCRETE MEDIAN
- ③ PORTLAND CEMENT CONCRETE BASE COURSE, 10"
- ④ COMBINATION CONCRETE CURB AND GUTTER
- ⑤ RAISED CONCRETE MEDIAN

PROPOSED IMPROVEMENTS:

- ① HOT-MIX ASPHALT SURFACE REMOVAL, 2 1/2"
- ② POLYMERIZED HOT-MIX ASPHALT SURFACE COURSE, MIX "F", N90, 1 3/4"
- ③ POLYMERIZED LEVELING BINDER (MACHINE METHOD), IL-4.75, N50, 3/4"
- ④ MEDIAN REMOVAL PARTIAL DEPTH, 2"
- ⑤ CLASS D PATCHES, 10" (DETERMINED BY ENGINEER IN FIELD)<sup>1</sup>
- ⑥ CLASS D PATCHES, 11" (DETERMINED BY ENGINEER IN FIELD)<sup>1</sup>
- ⑦ PORTLAND CEMENT CONCRETE REMOVAL (VARIABLE DEPTH) (SEE SHEET 14)
- ⑧ COMBINATION CONCRETE CURB AND GUTTER REMOVAL AND REPLACEMENT (AS DIRECTED BY ENGINEER)

\* THE CONTRACTOR SHALL MILL FIRST BEFORE PATCHING

<sup>1</sup> QUANTITIES FOR EARTH EXCAVATION AND AGGREGATE BASE REPAIR HAVE BEEN INCLUDED FOR SUBGRADE FAILURES BELOW THE CLASS D PATCHES

A QUANTITY FOR LEVELING BINDER (HAND METHOD) HAS BEEN PROVIDED FOR USE AT ENTRANCES, AROUND HAND HOLES, PRIVATE UTILITY STRUCTURE FRAMES AND ANY OTHER STRUCTURE FRAMES THAT ARE NOT ABLE TO BE LOWERED UNDER THE ITEM "FRAMES AND LIDS TO BE ADJUSTED (SPECIAL)" AFTER GRINDING OF THE EXISTING PAVEMENT.

FILE NAME = N:\PROJ\3389\3386.14\Design\Proposed\14-04-Typical Sections.dgn

**Ciorba Group, Inc.**  
CONSULTING ENGINEERS  
5507 North Cumberland Avenue, Suite 402  
Chicago, Illinois 60658  
Tel. 773.775.4009 Fax 773.775.4014

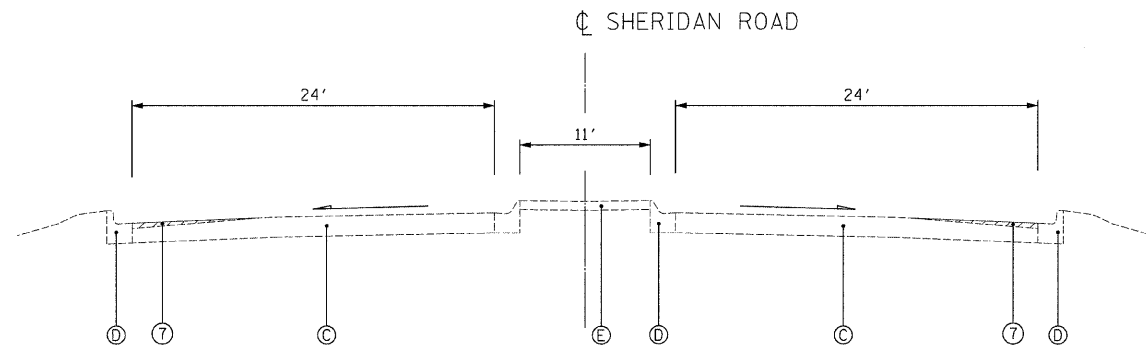
USER NAME = elau	DESIGNED MBT	REVISED -
PLOT SCALE = 5.0000' / IN.	DRAWN DKD	REVISED -
PLOT DATE = 4/20/2009	CHECKED WBL	REVISED -
DATE 4/20/2009	DATE 4/20/2009	REVISED -

STATE OF ILLINOIS  
DEPARTMENT OF TRANSPORTATION

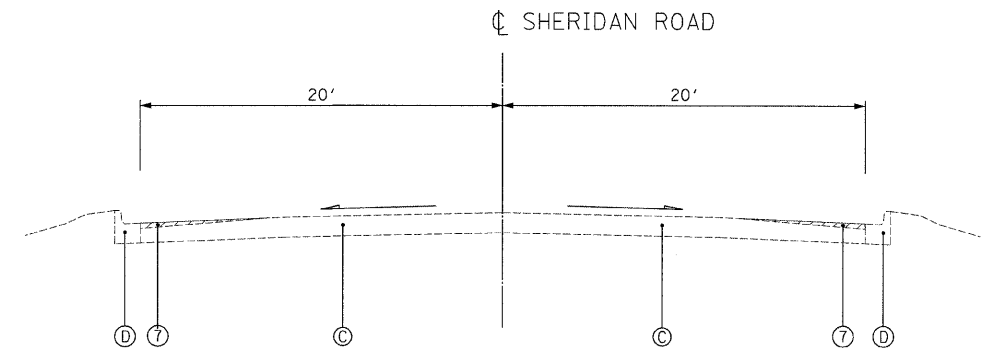
**SHERIDAN ROAD /SOUTH BOULEVARD**  
**JUNEWAY TERRACE TO SOUTH BLVD & SHERIDAN RD TO CHICAGO AVE**  
TYPICAL SECTIONS

F.A.U. RTE. 1332/2865	SECTION 2009-049 RS	COUNTY COOK	TOTAL SHEETS 19	SHEET NO. 4
CONTRACT NO. 60H09			ILLINOIS FED. AID PROJECT	

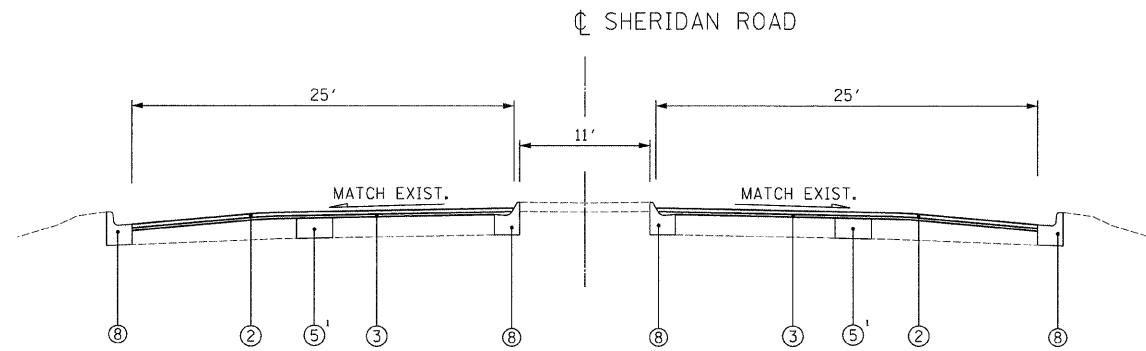
SCALE: N.T.S. SHEET NO. 4 OF 19 SHEETS STA. TO STA.



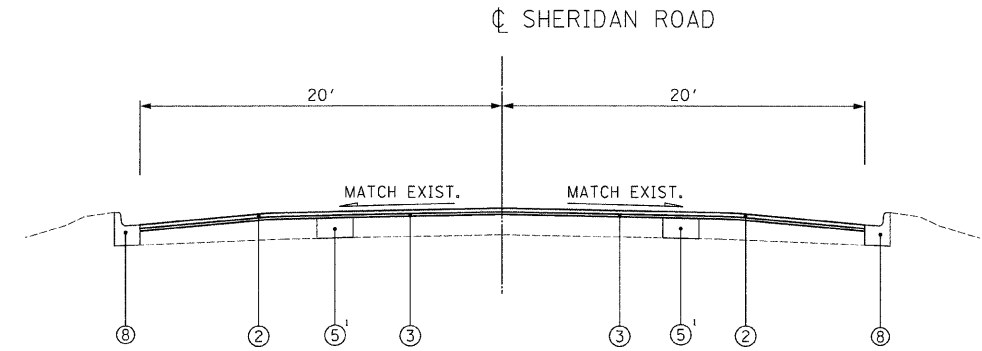
EXISTING TYPICAL SECTION  
STA. 193+50 TO STA. 202+00



EXISTING TYPICAL SECTION  
STA. 209+80 TO STA. 215+30



PROPOSED TYPICAL SECTION  
STA. 193+50 TO STA. 202+00



PROPOSED TYPICAL SECTION  
STA. 209+80 TO STA. 215+30

**EXISTING CONDITIONS:**

- Ⓐ HOT-MIX ASPHALT SURFACE AND BINDER COURSE, 5" AND VARIES
- Ⓑ CORRUGATED CONCRETE MEDIAN
- Ⓒ PORTLAND CEMENT CONCRETE BASE COURSE, 10"
- Ⓓ COMBINATION CONCRETE CURB AND GUTTER
- Ⓔ RAISED CONCRETE MEDIAN

**PROPOSED IMPROVEMENTS:**

- ① HOT-MIX ASPHALT SURFACE REMOVAL, 2 1/2"
- ② POLYMERIZED HOT-MIX ASPHALT SURFACE COURSE, MIX "F", N90, 1 3/4"
- ③ POLYMERIZED LEVELING BINDER (MACHINE METHOD), IL-4.75, N50, 3/4"
- ④ MEDIAN REMOVAL PARTIAL DEPTH, 2"
- ⑤ CLASS D PATCHES, 10" (DETERMINED BY ENGINEER IN FIELD)<sup>1</sup>
- ⑥ CLASS D PATCHES, 11" (DETERMINED BY ENGINEER IN FIELD)<sup>1</sup>
- ⑦ PORTLAND CEMENT CONCRETE REMOVAL (VARIABLE DEPTH) (SEE SHEET 14)
- ⑧ COMBINATION CONCRETE CURB AND GUTTER REMOVAL AND REPLACEMENT (AS DIRECTED BY ENGINEER)

\* THE CONTRACTOR SHALL MILL FIRST BEFORE PATCHING

<sup>1</sup> QUANTITIES FOR EARTH EXCAVATION AND AGGREGATE BASE REPAIR HAVE BEEN INCLUDED FOR SUBGRADE FAILURES BELOW THE CLASS D PATCHES

A QUANTITY FOR LEVELING BINDER (HAND METHOD) HAS BEEN PROVIDED FOR USE AT ENTRANCES, AROUND HAND HOLES, PRIVATE UTILITY STRUCTURE FRAMES AND ANY OTHER STRUCTURE FRAMES THAT ARE NOT ABLE TO BE LOWERED UNDER THE ITEM "FRAMES AND LIDS TO BE ADJUSTED (SPECIAL)" AFTER GRINDING OF THE EXISTING PAVEMENT.

FILE NAME = m:\p\2\3385\3388\_14\design\proposed\04-04-Typical Sections\02.dgn

**Ciorba Group, Inc.**  
CONSULTING ENGINEERS  
5507 North Cumberland Avenue, Suite 402  
Chicago, Illinois 60658  
Tel. 773.775.4009 Fax 773.775.4014

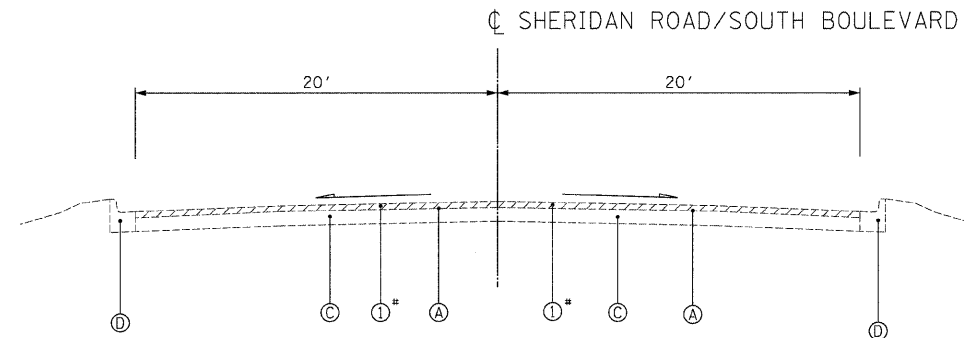
USER NAME = elau	DESIGNED MBT	REVISED -
PLOT SCALE = 5.0000' / 1"	DRAWN DKD	REVISED -
PLOT DATE = 4/20/2009	CHECKED WBL	REVISED -
	DATE 4/20/2009	REVISED -

**STATE OF ILLINOIS  
DEPARTMENT OF TRANSPORTATION**

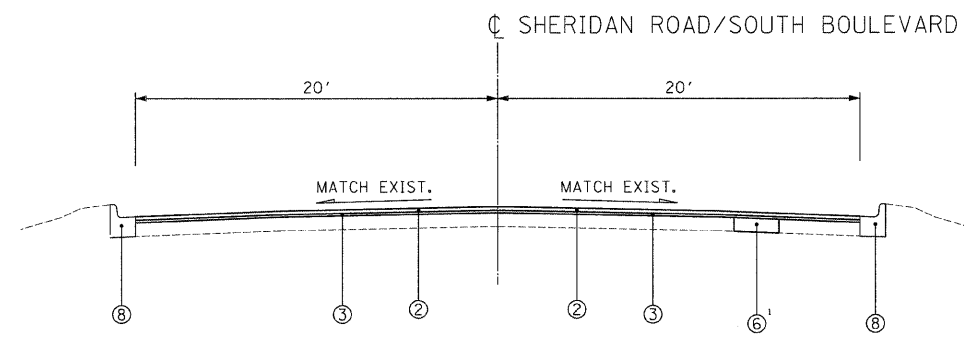
**SHERIDAN ROAD /SOUTH BOULEVARD  
JUNEWAY TERRACE TO SOUTH BLVD & SHERIDAN RD TO CHICAGO AVE  
TYPICAL SECTIONS**

SCALE: N.T.S. SHEET NO. 5 OF 19 SHEETS STA. TO STA.

F.A.U. RTE. 1332/2865	SECTION 2009-049 RS	COUNTY COOK	TOTAL SHEETS 19	SHEET NO. 5
FED. ROAD DIST. NO. 1 ILLINOIS FED. AID PROJECT			CONTRACT NO. 60H09	



EXISTING TYPICAL SECTION  
STA. 215+30 TO STA. 235+13



PROPOSED TYPICAL SECTION  
STA. 215+30 TO STA. 235+13

**EXISTING CONDITIONS:**

- (A) HOT-MIX ASPHALT SURFACE AND BINDER COURSE, 5" AND VARIES
- (B) CORRUGATED CONCRETE MEDIAN
- (C) PORTLAND CEMENT CONCRETE BASE COURSE, 10"
- (D) COMBINATION CONCRETE CURB AND GUTTER
- (E) RAISED CONCRETE MEDIAN

**PROPOSED IMPROVEMENTS:**

- (1) HOT-MIX ASPHALT SURFACE REMOVAL, 2 1/2"
- (2) POLYMERIZED HOT-MIX ASPHALT SURFACE COURSE, MIX "F", N90, 1 3/4"
- (3) POLYMERIZED LEVELING BINDER (MACHINE METHOD), IL-4.75, N50, 3/4"
- (4) MEDIAN REMOVAL PARTIAL DEPTH, 2"
- (5) CLASS D PATCHES, 10" (DETERMINED BY ENGINEER IN FIELD)<sup>1</sup>
- (6) CLASS D PATCHES, 11" (DETERMINED BY ENGINEER IN FIELD)<sup>1</sup>
- (7) PORTLAND CEMENT CONCRETE REMOVAL (VARIABLE DEPTH) (SEE SHEET 14)
- (8) COMBINATION CONCRETE CURB AND GUTTER REMOVAL AND REPLACEMENT (AS DIRECTED BY ENGINEER)

\* THE CONTRACTOR SHALL MILL FIRST BEFORE PATCHING

<sup>1</sup> QUANTITIES FOR EARTH EXCAVATION AND AGGREGATE BASE REPAIR HAVE BEEN INCLUDED FOR SUBGRADE FAILURES BELOW THE CLASS D PATCHES

A QUANTITY FOR LEVELING BINDER (HAND METHOD) HAS BEEN PROVIDED FOR USE AT ENTRANCES, AROUND HAND HOLES, PRIVATE UTILITY STRUCTURE FRAMES AND ANY OTHER STRUCTURE FRAMES THAT ARE NOT ABLE TO BE LOWERED UNDER THE ITEM "FRAMES AND LIDS TO BE ADJUSTED (SPECIAL)" AFTER GRINDING OF THE EXISTING PAVEMENT.

FILE NAME = n:\projects\3368\3368-14\design\proposed\plan\3368-14-04-1\typical\sections\03.dgn

**Ciorba Group, Inc.**  
CONSULTING ENGINEERS  
5507 North Cumberland Avenue, Suite 402  
Chicago, Illinois 60656  
Tel: 773.775.4009 Fax 773.775.4014

USER NAME = alau	DESIGNED MBT	REVISED -
	DRAWN DKD	REVISED -
PLOT SCALE = 5.0000' / 1" IN.	CHECKED WBL	REVISED -
PLOT DATE = 4/20/2009	DATE 4/20/2009	REVISED -

**STATE OF ILLINOIS  
DEPARTMENT OF TRANSPORTATION**

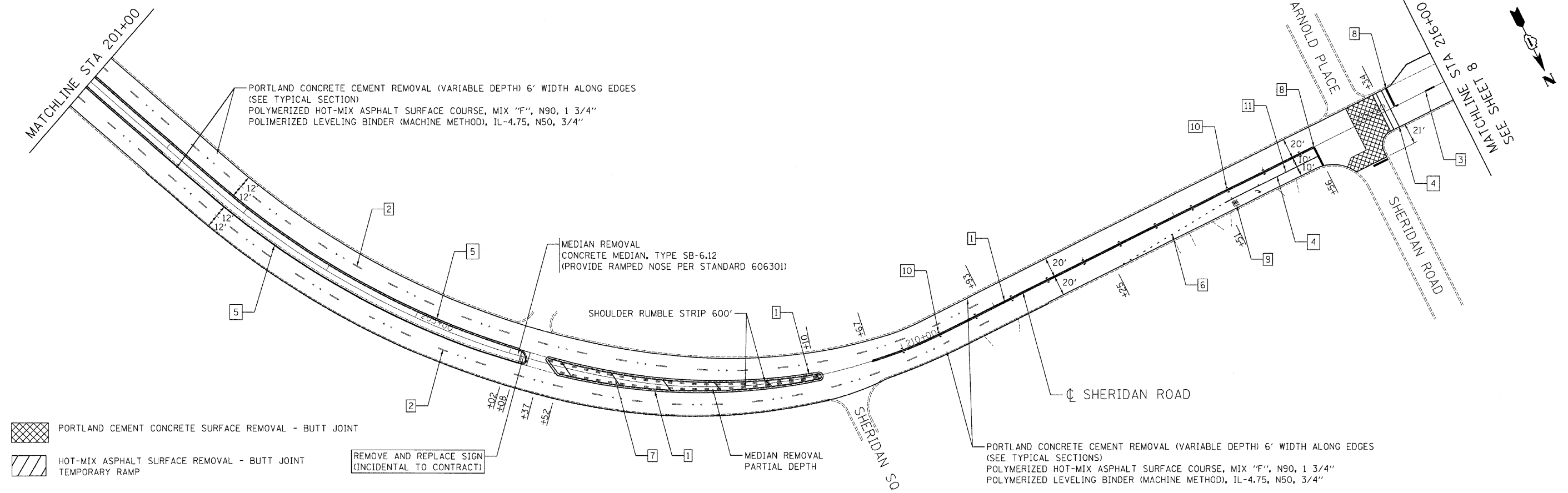
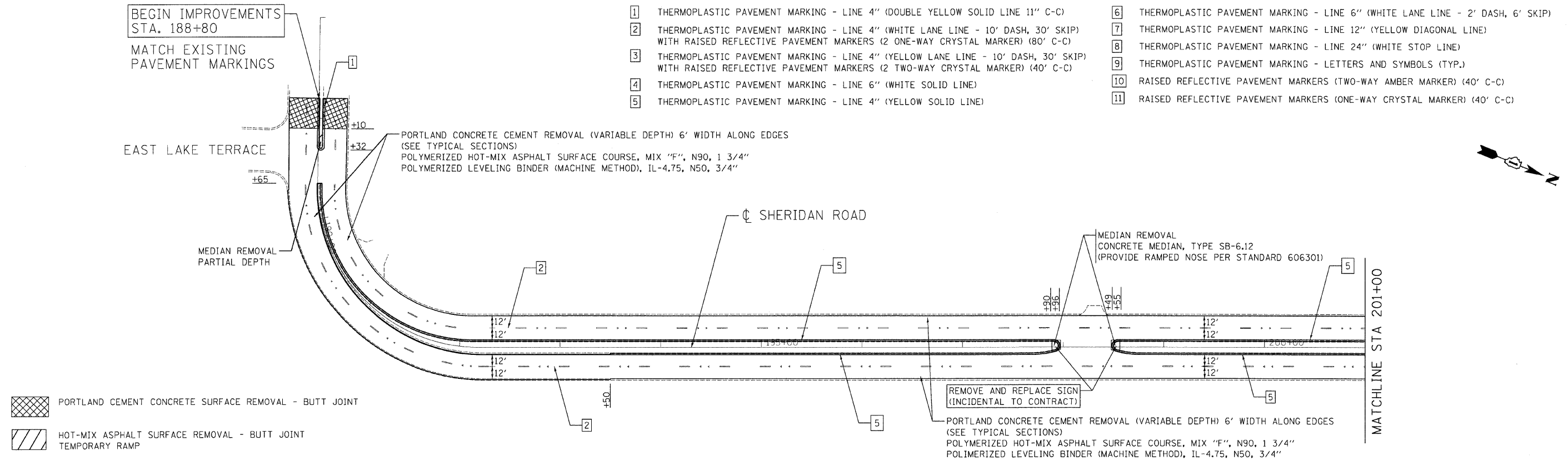
**SHERIDAN ROAD /SOUTH BOULEVARD  
JUNEWAY TERRACE TO SOUTH BLVD & SHERIDAN RD TO CHICAGO AVE  
TYPICAL SECTIONS**

F.A.U. RTE. 1332/2865	SECTION 2009-049 RS	COUNTY COOK	TOTAL SHEETS 19	SHEET NO. 6
FED. ROAD DIST. NO. 1 ILLINOIS FED. AID PROJECT				CONTRACT NO. 60H09

SCALE: N.T.S. SHEET NO. 6 OF 19 SHEETS STA. TO STA.

**LEGEND:**

- 1 THERMOPLASTIC PAVEMENT MARKING - LINE 4" (DOUBLE YELLOW SOLID LINE 11" C-C)
- 2 THERMOPLASTIC PAVEMENT MARKING - LINE 4" (WHITE LANE LINE - 10' DASH, 30' SKIP) WITH RAISED REFLECTIVE PAVEMENT MARKERS (2 ONE-WAY CRYSTAL MARKER) (80' C-C)
- 3 THERMOPLASTIC PAVEMENT MARKING - LINE 4" (YELLOW LANE LINE - 10' DASH, 30' SKIP) WITH RAISED REFLECTIVE PAVEMENT MARKERS (2 TWO-WAY CRYSTAL MARKER) (40' C-C)
- 4 THERMOPLASTIC PAVEMENT MARKING - LINE 6" (WHITE SOLID LINE)
- 5 THERMOPLASTIC PAVEMENT MARKING - LINE 4" (YELLOW SOLID LINE)
- 6 THERMOPLASTIC PAVEMENT MARKING - LINE 6" (WHITE LANE LINE - 2' DASH, 6' SKIP)
- 7 THERMOPLASTIC PAVEMENT MARKING - LINE 12" (YELLOW DIAGONAL LINE)
- 8 THERMOPLASTIC PAVEMENT MARKING - LINE 24" (WHITE STOP LINE)
- 9 THERMOPLASTIC PAVEMENT MARKING - LETTERS AND SYMBOLS (TYP.)
- 10 RAISED REFLECTIVE PAVEMENT MARKERS (TWO-WAY AMBER MARKER) (40' C-C)
- 11 RAISED REFLECTIVE PAVEMENT MARKERS (ONE-WAY CRYSTAL MARKER) (40' C-C)

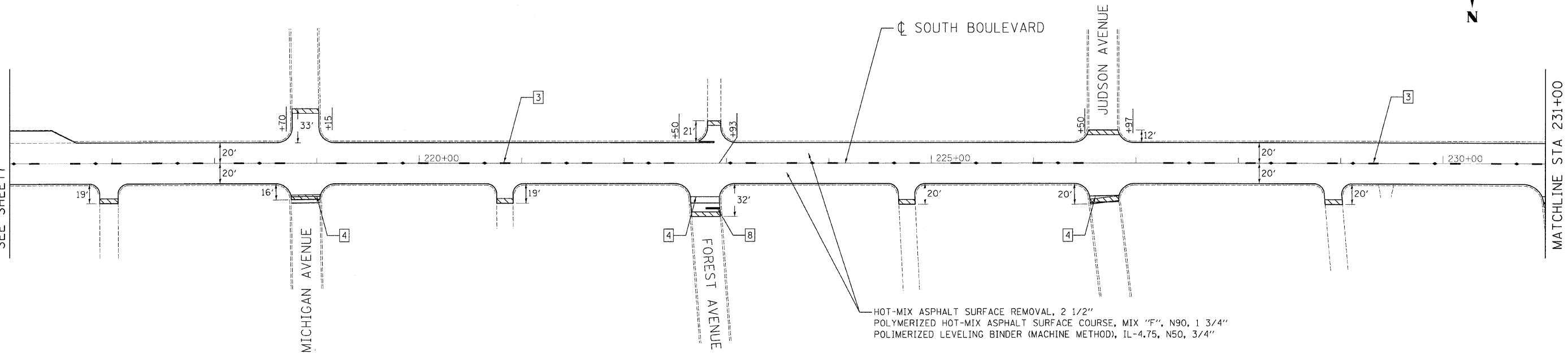


	<b>Ciorba Group, Inc.</b> CONSULTING ENGINEERS 5507 North Cumberland Avenue, Suite 402 Chicago, Illinois 60656 Tel. 773.775.4009 Fax 773.775.4014	USER NAME = a1au PLOT SCALE = 50.0000' / IN. PLOT DATE = 4/20/2009	DESIGNED MBT DRAWN DKD CHECKED WBL DATE 4/20/2009	REVISED - REVISED - REVISED - REVISED -	<b>STATE OF ILLINOIS</b> <b>DEPARTMENT OF TRANSPORTATION</b>	<b>SHERIDAN ROAD /SOUTH BOULEVARD</b> <b>JUNEWAY TERRACE TO SOUTH BLVD &amp; SHERIDAN RD TO CHICAGO AVE</b> <b>PROPOSED ROADWAY AND PAVEMENT MARKING PLAN</b>	F.A.U. RTE. 1332/2865 SECTION 2009-049 RS COUNTY COOK TOTAL SHEETS 19 SHEET NO. 7 CONTRACT NO. 60H09 FED. ROAD DIST. NO. 1 ILLINOIS FED. AID PROJECT
	SCALE: 1"=50' SHEET NO. 7 OF 19 SHEETS STA. 188+00 TO STA. 216+00						

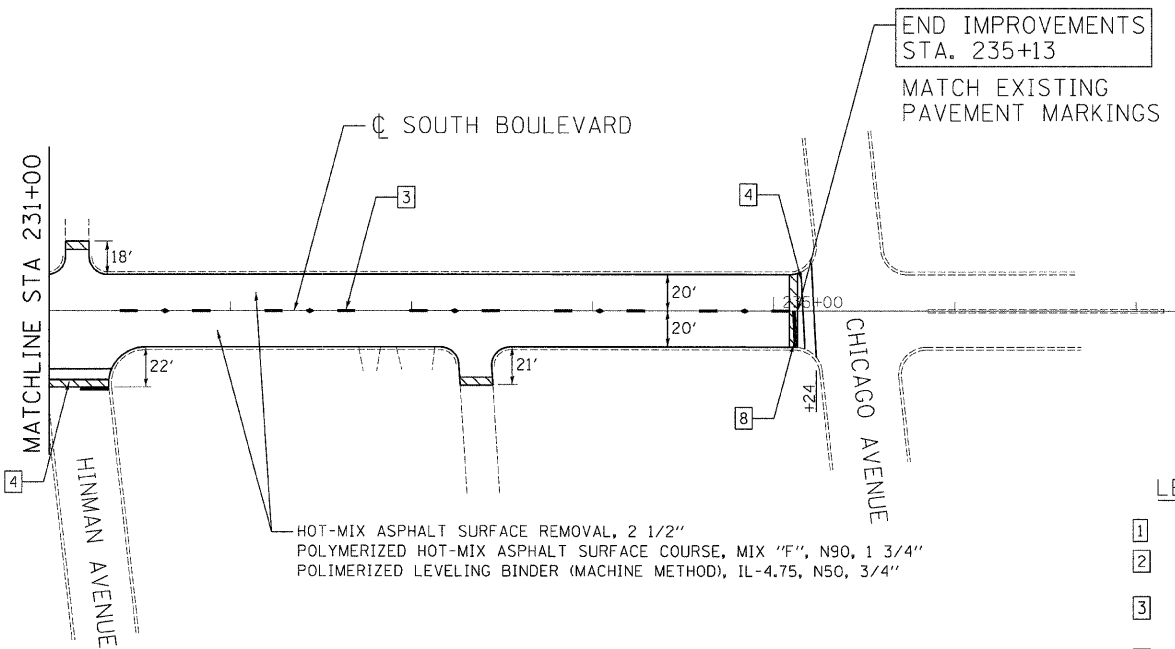
FILE NAME = n:\proj\3388\3388\_14\design\pr\opaseds\3388\_14-P-Prop01.dgn



MATCHLINE STA 216+00  
SEE SHEET 7



HOT-MIX ASPHALT SURFACE REMOVAL - BUTT JOINT  
TEMPORARY RAMP



HOT-MIX ASPHALT SURFACE REMOVAL - BUTT JOINT  
TEMPORARY RAMP

**LEGEND:**

- |   |   |
|---|---|
| <ul style="list-style-type: none"> <li>1 THERMOPLASTIC PAVEMENT MARKING - LINE 4" (DOUBLE YELLOW SOLID LINE 11" C-C)</li> <li>2 THERMOPLASTIC PAVEMENT MARKING - LINE 4" (WHITE LANE LINE - 10' DASH, 30' SKIP) WITH RAISED REFLECTIVE PAVEMENT MARKERS (2 ONE-WAY CRYSTAL MARKER) (80' C-C)</li> <li>3 THERMOPLASTIC PAVEMENT MARKING - LINE 4" (YELLOW LANE LINE - 10' DASH, 30' SKIP) WITH RAISED REFLECTIVE PAVEMENT MARKERS (2 TWO-WAY CRYSTAL MARKER) (40' C-C)</li> <li>4 THERMOPLASTIC PAVEMENT MARKING - LINE 6" (WHITE SOLID LINE)</li> <li>5 THERMOPLASTIC PAVEMENT MARKING - LINE 4" (YELLOW SOLID LINE)</li> </ul> | <ul style="list-style-type: none"> <li>6 THERMOPLASTIC PAVEMENT MARKING - LINE 6" (WHITE LANE LINE - 2' DASH, 6' SKIP)</li> <li>7 THERMOPLASTIC PAVEMENT MARKING - LINE 12" (YELLOW DIAGONAL LINE)</li> <li>8 THERMOPLASTIC PAVEMENT MARKING - LINE 24" (WHITE STOP LINE)</li> <li>9 THERMOPLASTIC PAVEMENT MARKING - LETTERS AND SYMBOLS (TYP.)</li> <li>10 RAISED REFLECTIVE PAVEMENT MARKERS (TWO-WAY AMBER MARKER) (40' C-C)</li> <li>11 RAISED REFLECTIVE PAVEMENT MARKERS (ONE-WAY CRYSTAL MARKER) (40' C-C)</li> </ul> |
|---|---|

FILE NAME = r:\p\proj\3366\3366\_14\design\prop\prop2.dgn

**Ciorba Group, Inc.**  
CONSULTING ENGINEERS  
5507 North Cumberland Avenue, Suite 402  
Chicago, Illinois 60656  
Tel. 773.775.4006 Fax 773.775.4014

USER NAME = a1au	DESIGNED MBT	REVISED -
PLOT SCALE = 50.0000" / IN.	DRAWN DKD	REVISED -
PLOT DATE = 4/20/2009	CHECKED WBL	REVISED -
	DATE 4/20/2009	REVISED -

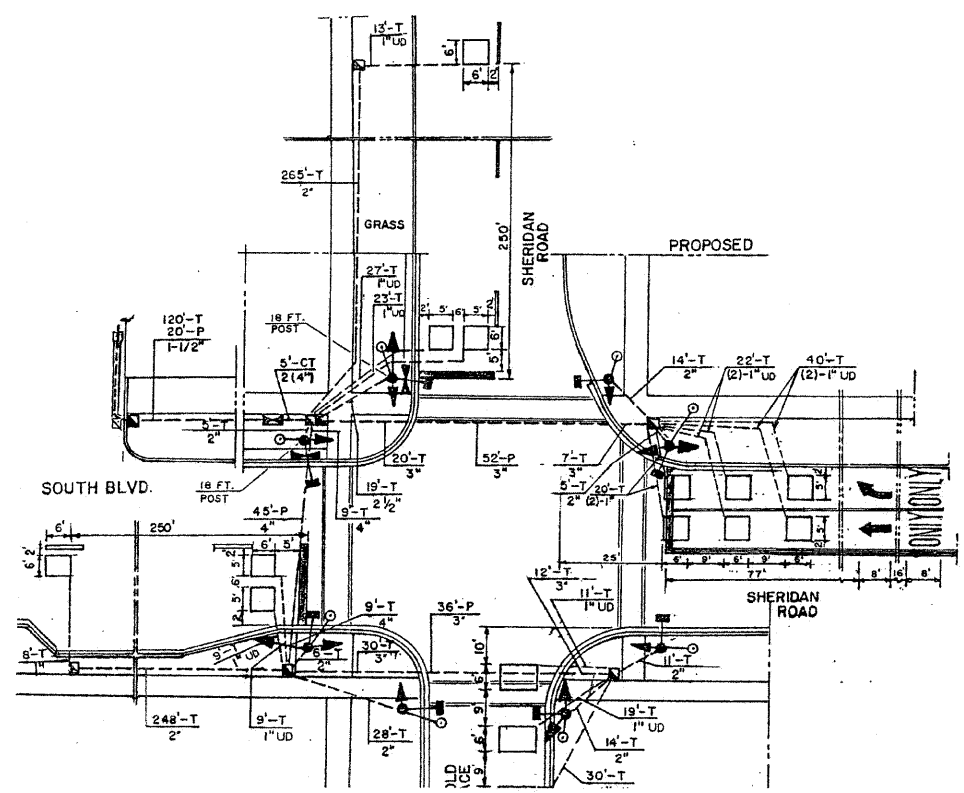
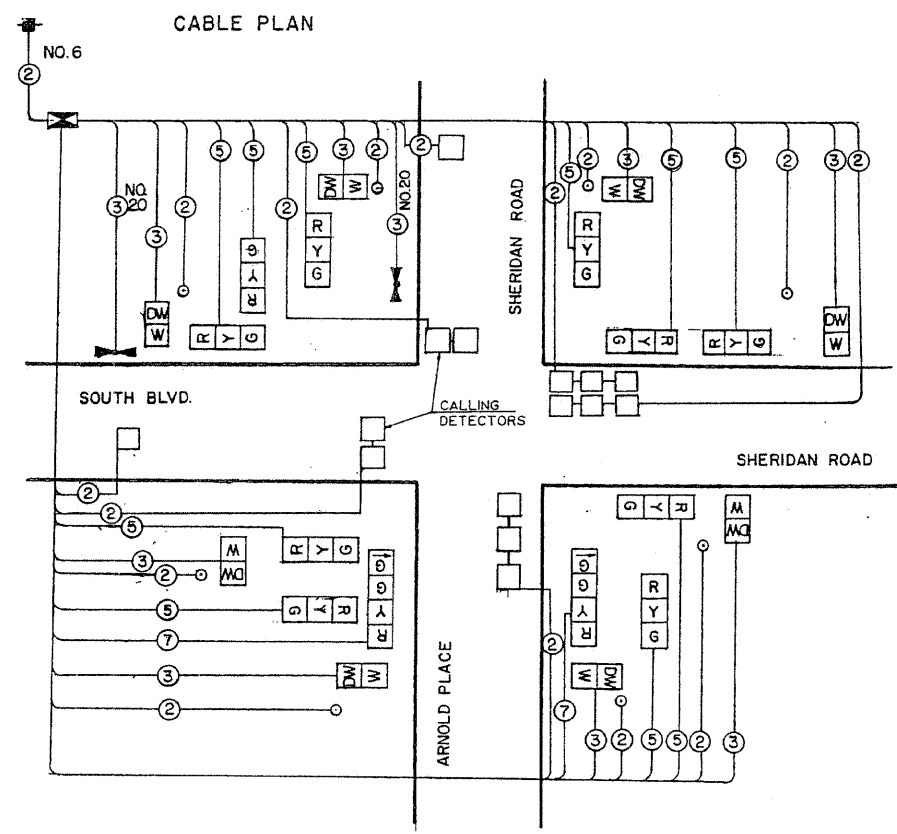
**STATE OF ILLINOIS  
DEPARTMENT OF TRANSPORTATION**

**SHERIDAN ROAD /SOUTH BOULEVARD  
JUNEWAY TERRACE TO SOUTH BLVD & SHERIDAN RD TO CHICAGO AVE  
PROPOSED ROADWAY AND PAVEMENT MARKING PLAN**

SCALE: 1"=50' SHEET NO. 8 OF 19 SHEETS STA. 216+00 TO STA. 237+25

F.A.U. RTE. 1332/2865	SECTION 2009-049 RS	COUNTY COOK	TOTAL SHEETS 19	SHEET NO. 8
FED. ROAD DIST. NO. 1 ILLINOIS FED. AID PROJECT			CONTRACT NO. 60H09	





REPLACE ALL DETECTOR LOOPS AS SHOWN  
(WITHIN PROJECT LIMITS)

CODE NO.	QUANTITY	UNIT	ITEM
86600600	345	FOOT	DETECTOR LOOP REPLACEMENT

FILE NAME = r:\p\proj\33260\33260-14\design\33260-14-1\_copied.dwg

**Ciorba Group, Inc.**  
CONSULTING ENGINEERS  
5507 North Cumberland Avenue, Suite 402  
Chicago, Illinois 60656  
Tel. 773.775.4009 Fax 773.775.4014

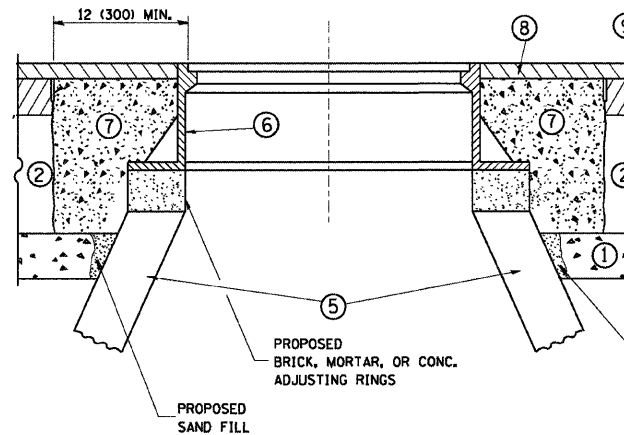
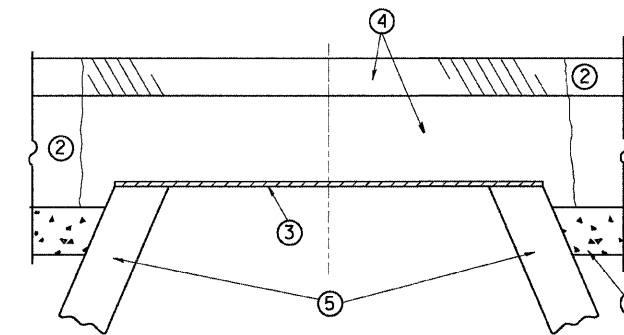
USER NAME = a1au	DESIGNED MBT	REVISED -
PLOT SCALE = 1:8000' / IN.	DRAWN DKD	REVISED -
PLOT DATE = 4/20/2009	CHECKED WBL	REVISED -
DATE 4/20/2009	DATE 4/20/2009	REVISED -

**STATE OF ILLINOIS  
DEPARTMENT OF TRANSPORTATION**

**SHERIDAN ROAD /SOUTH BOULEVARD  
JUNEWAY TERRACE TO SOUTH BLVD & SHERIDAN RD TO CHICAGO AVE  
DETECTOR LOOP REPLACEMENT PLAN**

SCALE: N.T.S. SHEET NO. 9 OF 19 SHEETS STA. TO STA.

F.A.U. RTE. 1332/2865	SECTION 2009-049 RS	COUNTY COOK	TOTAL SHEETS 19	SHEET NO. 9
FED. ROAD DIST. NO. 1 ILLINOIS FED. AID PROJECT			CONTRACT NO. 60H09	



**CONSTRUCTION PROCEDURES**

**STAGE 1 (BEFORE PAVEMENT MILLING)**

- A) REMOVE A MINIMUM OF 12 (300) OF THE PAVEMENT FROM AROUND THE STRUCTURE.
- B) REMOVE THE EXISTING FRAME AND LID FROM THE STRUCTURE.
- C) COVER THE STRUCTURE OPENING WITH A 36 (900) DIAMETER METAL PLATE.
- D) BACKFILL WITH CRUSHED STONE AND A MINIMUM 1 1/2 (40) THICK HMA SURFACE MIX APPROVED BY THE ENGINEER.

**STAGE 2 (AFTER PAVEMENT MILLING)**

- A) REMOVE THE HMA SURFACE MIX AND CRUSHED STONE.
- B) INSTALL THE FRAME AND LID; ADJUST THE FRAME TO ITS FINAL SURFACE ELEVATION.
- C) THE SURROUNDING SPACE SHALL BE FILLED WITH CLASS SI CONCRETE, OR HMA SURFACE COURSE OR HMA BINDER COURSE TO THE ELEVATION OF THE SURFACE OF THE EXISTING BASE COURSE OR THE BINDER COURSE.

THE PROCEDURE EXPLAINED ABOVE SHALL CONFORM TO THE APPLICABLE PORTIONS OF SECTIONS 353, 406, 602, AND 603 OF THE STANDARD SPECIFICATIONS.

**LEGEND**

- ① SUB-BASE GRANULAR MATERIAL
- ② EXISTING PAVEMENT
- ③ 36 (900) DIAMETER METAL PLATE
- ④ PROPOSED CRUSHED STONE AND HMA SURFACE MIX
- ⑤ EXISTING STRUCTURE
- ⑥ FRAME AND LID (SEE NOTES)
- ⑦ CLASS SI CONCRETE, HMA SURFACE COURSE OR HMA BINDER COURSE
- ⑧ PROPOSED HMA SURFACE COURSE
- ⑨ PROPOSED HMA BINDER COURSE

**NOTES:**

EXISTING BROKEN FRAMES AND LIDS SHALL BE REMOVED AND DISPOSED OF BY THE CONTRACTOR AND SHALL BE REPLACED AS DIRECTED BY THE ENGINEER. REPLACEMENT FRAMES AND LIDS WILL BE PAID FOR IN ACCORDANCE WITH ARTICLE 109.04 OF THE STANDARD SPECIFICATIONS UNLESS A SEPARATE PAY ITEM HAS BEEN PROVIDED.

IF THE EXISTING LIDS ARE OPEN, THE FRAME WILL BE ADJUSTED TO THE ELEVATION OF THE MILLED PAVEMENT SURFACE PRIOR TO THE MILLING OPERATION. THE FRAME WILL NOT BE REMOVED AND COVERED BY THE METAL PLATE.

CITY OF CHICAGO CASTINGS ARE THE PROPERTY OF THE CITY AND THE CONTRACTOR SHALL NOTIFY THE CITY FOR REMOVAL AND DISPOSITION OF THE CASTINGS.

THE METAL PLATE USED TO COVER THE STRUCTURE SHALL REMAIN THE PROPERTY OF THE CONTRACTOR.

WHEN STRUCTURES ARE TO BE ADJUSTED OR RECONSTRUCTED, THE LOWERING AND RAISING OF THE FRAMES AND LIDS WILL NOT BE PAID FOR SEPARATELY BUT WILL BE INCLUDED IN THE COST OF THE CORRESPONDING PAY ITEM.

**LOCATION OF STRUCTURES:**

THE CONTRACTOR WILL BE REQUIRED TO KEEP A RECORD OF THE LOCATIONS OF THE BURIED STRUCTURES ACCORDING TO THE STATION AND DISTANCE LEFT OR RIGHT OF THE CENTERLINE OF PAVEMENT. UPON COMPLETION OF THE WORK, THE CONTRACTOR WILL DELIVER THE RECORD TO THE ENGINEER.

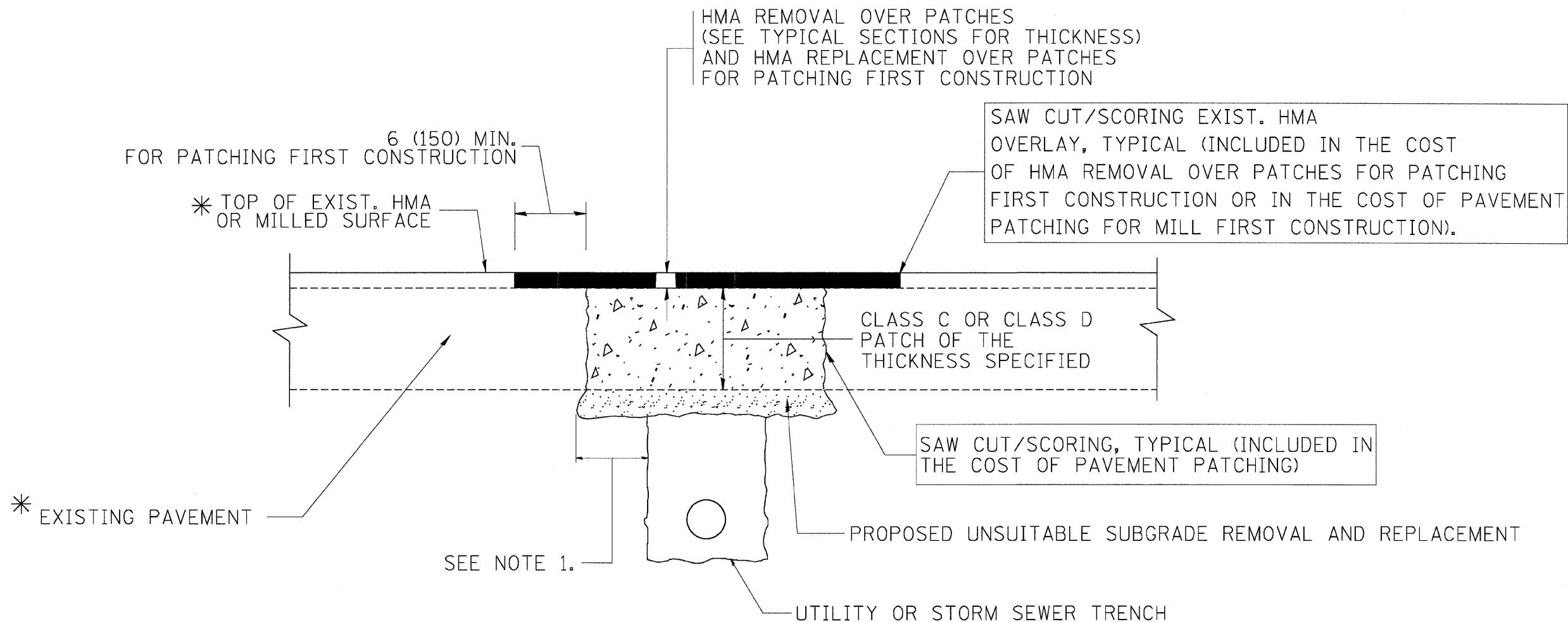
**BASIS OF PAYMENT:** THIS WORK WILL BE PAID FOR AT THE CONTRACT UNIT PRICE PER EACH FOR "FRAMES AND LIDS TO BE ADJUSTED, SPECIAL"

NEW FRAMES AND LIDS, WHEN SPECIFIED, WILL BE PAID FOR SEPARATELY.

**DETAILS FOR FRAMES AND LIDS ADJUSTMENT WITH MILLING**

ALL DIMENSIONS ARE IN INCHES (MILLIMETERS) UNLESS OTHERWISE SHOWN

FILE NAME = W:\d:\stsd\22x34\bd08.dgn	USER NAME = geglienobt	DESIGNED - R. SHAH	REVISED - R. SHAH 03-10-95	<b>STATE OF ILLINOIS DEPARTMENT OF TRANSPORTATION</b>	<b>DETAILS FOR FRAMES AND LIDS ADJUSTMENT WITH MILLING</b>		F.A.I. RTE.	SECTION	COUNTY	TOTAL SHEETS	SHEET NO.	
		DRAWN -	REVISED - A. ABBAS 03-21-97		SCALE: NONE	SHEET NO. 1 OF 1 SHEETS	STA.	1332/2865	2009-049 RS	COOK	19	10
		PLOT SCALE = 50,0000' / IN.	REVISED - R. WIEDEMAN 05-14-04				TO STA.	<b>BD600-03 (BD-8)</b>		<b>CONTRACT NO. 60H09</b>		
		PLOT DATE = 1/4/2008	REVISED - R. BORO 01-01-07					FED. ROAD DIST. NO. 1 ILLINOIS FED. AID PROJECT				



\* SEE TYPICAL SECTIONS FOR  
THICKNESS AND MATERIALS

**NOTES:**

1. THE WIDTH OF THE FULL DEPTH PATCH OVER A TRENCH SHALL BE 12 (300) WIDER ON EACH SIDE OF THE TRENCH.
2. FOR METHOD OF MEASUREMENT AND BASIS OF PAYMENT, SEE RECURRING SPECIAL PROVISION "PATCHING WITH HOT-MIX ASPHALT OVERLAY REMOVAL".

**SEQUENCE OF CONSTRUCTION (PATCHING FIRST)**

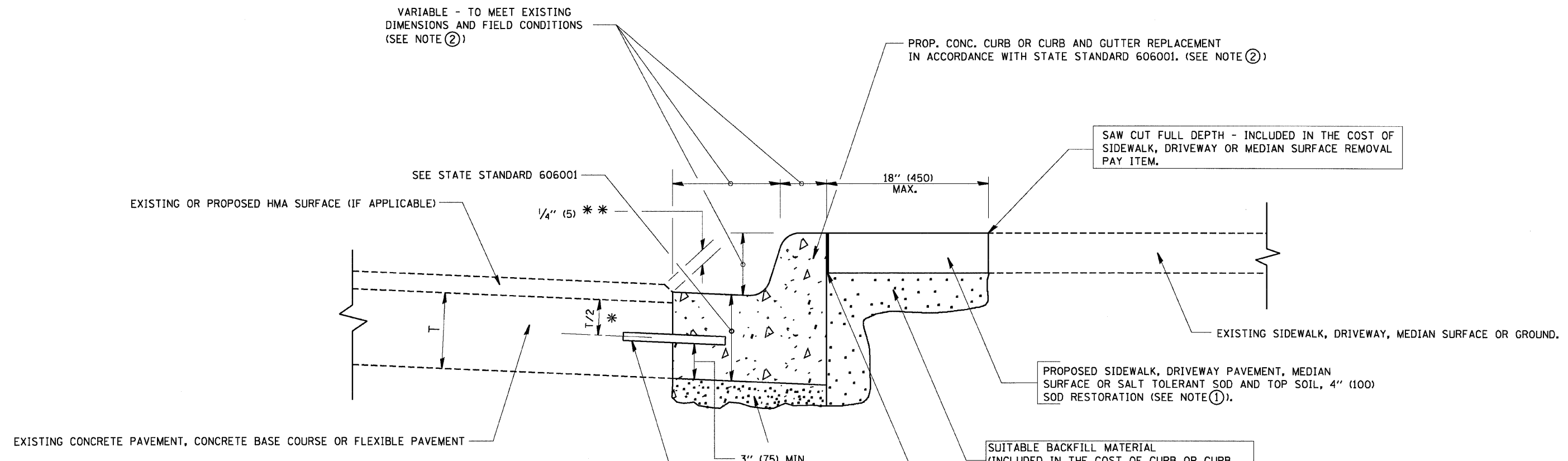
1. REMOVE THE EXISTING HMA MATERIAL OVER THE AREA TO BE PATCHED.
2. REMOVE AND REPLACE WITH CLASS C OR D PATCH.
3. REPLACE HMA MATERIAL OVER THE AREA TO BE PATCHED.

**SEQUENCE OF CONSTRUCTION (MILLING FIRST)**

1. MILL HMA FIRST IF THERE IS AT LEAST 4 1/2 INCHES OR MORE OF HMA MATERIAL ON TOP OF THE EXISTING PAVEMENT OR IF THE PAVEMENT IS FULL DEPTH HMA. A MINIMUM OF 2 INCHES OF HMA MATERIAL SHALL BE IN PLACE AFTER MILLING.
2. REMOVE AND REPLACE WITH FULL DEPTH CLASS D PATCHES TO TOP OF MILLED SURFACE.

ALL DIMENSIONS ARE IN INCHES (MILLIMETERS) UNLESS OTHERWISE SHOWN.

FILE NAME = c:\projects\diststd22x34\bd22.dgn	USER NAME = bouerd1	DESIGNED - R. SHAH	REVISED - A. ABBAS 04-27-98	<b>STATE OF ILLINOIS DEPARTMENT OF TRANSPORTATION</b>	<b>PAVEMENT PATCHING FOR HMA SURFACED PAVEMENT</b>		F.A.U. RTE.	SECTION	COUNTY	TOTAL SHEETS	SHEET NO.
		DRAWN -	REVISED - R. BORO 01-01-07		1332/2865	2009-049 RS	COOK	19	11		
		CHECKED -	REVISED - R. BORO 09-04-07		SCALE: NONE		SHEET NO. 1 OF 1 SHEETS	STA.	TO STA.	FED. ROAD DIST. NO. 1 ILLINOIS FED. AID PROJECT	
		DATE - 10-25-94	REVISED - K. ENG 10-27-08		CONTRACT NO. 60H09		BD400-04 (BD-22)				



- \* 3" (75) MINIMUM FROM TOP AND BOTTOM OF THE CONCRETE PAVEMENT OR BASE COURSE.
  - \* \* IF THE FINAL SURFACE OF THE PAVEMENT IS CONCRETE, THE GUTTER IS TO BE FLUSH WITH THE PAVEMENT.
- NOTE: ① SIDEWALK, DRIVEWAY PAVEMENT OR MEDIAN SURFACE SHALL BE SIMILAR TO THE MATERIAL BEING REMOVED AND WILL BE PAID FOR SEPARATELY.
- SALT TOLERANT SOD AND TOP SOIL, 4" (100) RESTORATION WILL NOT BE PAID FOR SEPARATELY, BUT SHALL BE INCLUDED IN THE COST OF CURB OR CURB AND GUTTER REMOVAL AND REPLACEMENT.
- ② CURB OR CURB AND GUTTER REPLACEMENT SHALL MATCH THE SHAPE OF THE EXISTING CURB OR CURB AND GUTTER UNLESS OTHERWISE SPECIFIED.
  - ③ FOR CURB OR CURB AND GUTTER REMOVAL AND REPLACEMENT ADJACENT TO FLEXIBLE PAVEMENT DELETE EPOXY COATED TIE BARS.
  - ④ LONGITUDINAL BARS, IF ENCOUNTERED IN THE EXISTING CURB OR CURB AND GUTTER, ARE NOT TO BE REPLACED. CUTTING AND REMOVING LONGITUDINAL BARS SHALL BE INCLUDED IN THE COST OF CURB OR CURB AND GUTTER REMOVAL AND REPLACEMENT.
  - ⑤ THE COST OF HMA SURFACE REMOVAL IN THE EXISTING GUTTER FLAG SHALL BE INCLUDED IN THE COST OF THE CURB AND GUTTER REMOVAL AND REPLACEMENT.
  - ⑥ THE REMOVAL AND REPLACEMENT OF THE EXISTING CURB OR CURB AND GUTTER SHALL BE DONE IN ACCORDANCE WITH THE APPLICABLE PORTIONS OF SECTION 440 AND 606 OF THE STANDARD SPECIFICATIONS.
  - ⑦ THE LOCATIONS OF REMOVAL AND REPLACEMENT OF EXISTING CURB OR CURB AND GUTTER SHALL BE DETERMINED BY THE RESIDENT ENGINEER AT THE TIME OF CONSTRUCTION.

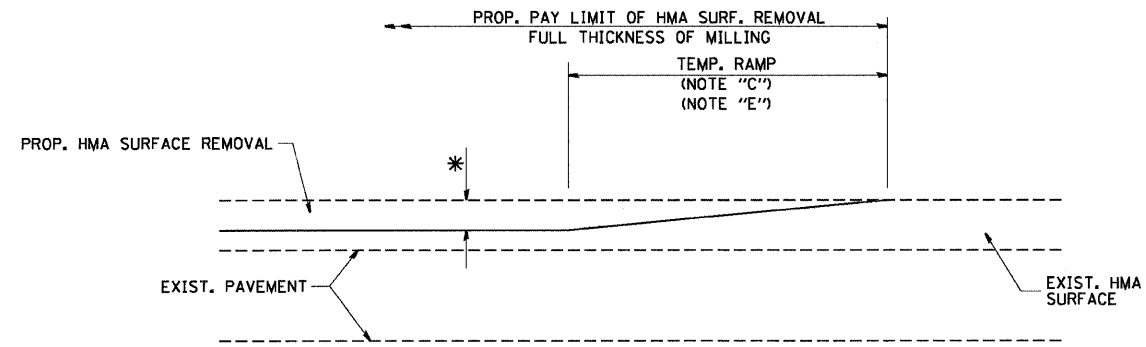
- SUITABLE BACKFILL MATERIAL (INCLUDED IN THE COST OF CURB OR CURB AND GUTTER REMOVAL AND REPLACEMENT)
- PROPOSED 3/4" (20) PREFORMED EXPANSION JOINT AT CONCRETE SIDEWALKS, DRIVEWAYS, AND MEDIANS. (INCLUDED IN THE COST OF CURB OR CURB AND GUTTER REMOVAL AND REPLACEMENT.)
- UNSUITABLE SUB-BASE MATERIAL TO BE REMOVED, IF DIRECTED BY THE ENGINEER, SHALL BE REPLACED WITH EITHER SUB-BASE GRANULAR MATERIAL, TYPE B OR ADDITIONAL THICKNESS OF CONCRETE.
- REMOVAL AND REPLACEMENT 4" (100) OR LESS IS INCLUDED IN THE COST OF CURB OR CURB AND GUTTER REMOVAL AND REPLACEMENT.
- REMOVAL AND REPLACEMENT IN EXCESS OF 4" (100) WILL BE PAID FOR IN ACCORDANCE WITH ARTICLE 109.04 OF THE STANDARD SPECIFICATIONS.
- PROPOSED #6 (20) EPOXY COATED TIE BARS 24" (600) LONG AT 24" (600) CENTERS WILL NOT BE PAID FOR SEPARATELY. DELETE EPOXY COATED TIE BARS IF EXISTING TIE BARS ARE USUABLE AS DETERMINED BY THE ENGINEER. (SEE NOTE ③).

**BASIS OF PAYMENT:**  
 THIS WORK WILL BE PAID FOR AT THE CONTRACT UNIT PRICE PER FOOT (METER) FOR "CURB REMOVAL AND REPLACEMENT" OR "COMBINATION CONCRETE CURB AND GUTTER REMOVAL AND REPLACEMENT".

# CURB OR CURB AND GUTTER REMOVAL AND REPLACEMENT

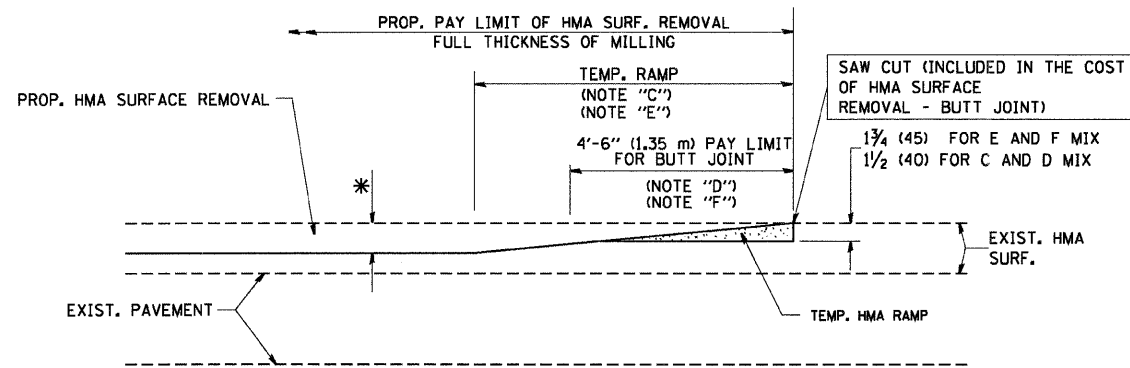
ALL DIMENSIONS ARE IN INCHES (MILLIMETERS) UNLESS OTHERWISE SHOWN.

FILE NAME = W:\dststd\22x34\bd24.dgn	USER NAME = goglionobt	DESIGNED - A. HOUSEH	REVISED - R. SHAH 10-03-96	<b>STATE OF ILLINOIS DEPARTMENT OF TRANSPORTATION</b>	<b>CURB OR CURB AND GUTTER REMOVAL AND REPLACEMENT</b>	F.A.U. RTE. 1332/2865	SECTION 2009-049 RS	COUNTY COOK	TOTAL SHEETS 19	SHEET NO. 12
	PLOT SCALE = 5/8" @ 1" IN.	DRAWN -	REVISED - A. ABBAS 03-21-97			<b>BD600-06 (BD-24)</b>		CONTRACT NO. 60H09		
	PLOT DATE = 1/4/2008	CHECKED -	REVISED - M. GOMEZ 01-22-01		SCALE: NONE	SHEET NO. 1 OF 1 SHEETS		STA. TO STA.		FED. ROAD DIST. NO. 1 ILLINOIS FED. AID PROJECT
		DATE - 03-11-94	REVISED - R. BORO 01-01-07							



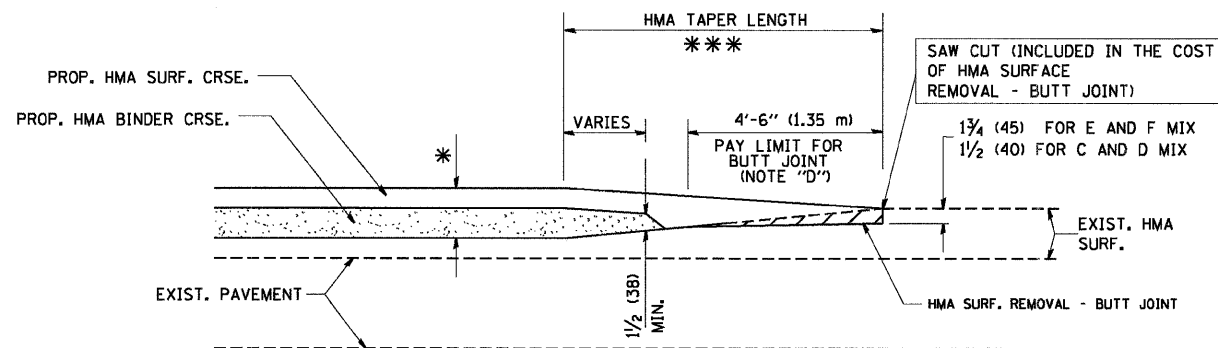
MILLED TEMPORARY RAMP  
(FOR BUTT JOINT AND HMA TAPER SEE DETAIL BELOW)

OPTION 1

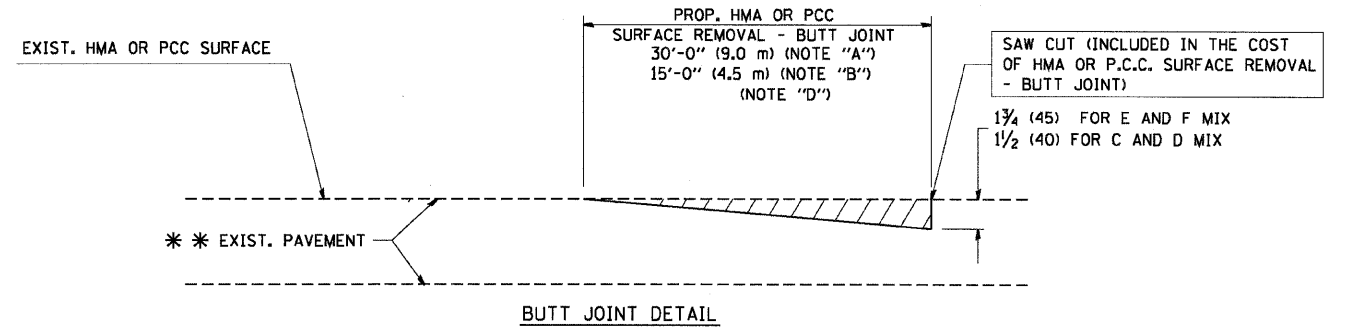


HMA CONSTRUCTED TEMPORARY RAMP  
(FOR BUTT JOINT AND HMA TAPER SEE DETAIL BELOW)

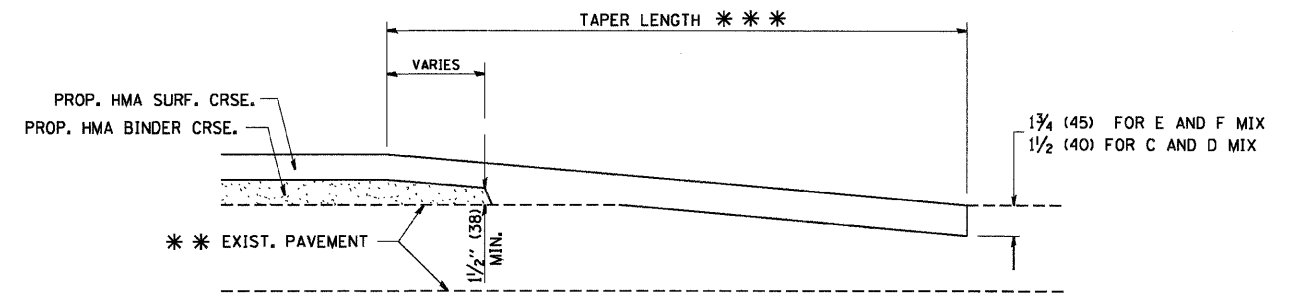
OPTION 2  
TYPICAL TEMPORARY RAMP



BUTT JOINT AND HMA TAPER  
TYPICAL BUTT JOINT AND HMA TAPER FOR MILLING AND RESURFACING



BUTT JOINT DETAIL



HMA TAPER DETAIL

TYPICAL BUTT JOINT AND HMA TAPER FOR RESURFACING ONLY

\*\*\* PC CONCRETE, HMA OR HMA RESURFACED PAVEMENT.

NOTES

- A: MAINLINE ROADWAYS AND MAJOR SIDE ROADS.
  - B: MINOR SIDE ROADS.
  - C: THE TEMP. RAMP SHALL BE CONSTRUCTED IMMEDIATELY UPON REMOVAL OF THE EXISTING HMA SURFACE.
  - D: THE BUTT JOINT SHALL BE CONSTRUCTED IMMEDIATELY PRIOR TO PLACING THE PROPOSED HMA COURSES.
  - E: TAPER THE TEMP. RAMP AT A RATE OF 3'-0" (900 mm) PER 1 INCH (25 mm) OF MILLING THICKNESS.
  - F: INSTALLATION AND REMOVAL OF THE 4'-6" (1.35 m) TEMP. RAMP IS INCLUDED IN COST OF HMA SURFACE REMOVAL - BUTT JOINT
  - G: SEE ARTICLE 406.08 AND 406.14 OF THE STANDARD SPECIFICATIONS FOR "HMA AND/OR PCC SURFACE REMOVAL, BUTT JOINT".
- \* SEE TYPICAL SECTIONS FOR MILLING THICKNESS.

\*\*\* 20'-0" (6.1 m) PER 1 (25) RESURFACING (NOTE "A")  
10'-0" (3.0 m) PER 1 (25) RESURFACING (NOTE "B")

BASIS OF PAYMENT:

THE BUTT JOINT WILL BE PAID FOR AT THE CONTRACT UNIT PRICE PER SQUARE YARD (SQUARE METER) FOR "HOT-MIX ASPHALT SURFACE REMOVAL - BUTT JOINT" OR FOR "PORTLAND CEMENT CONCRETE SURFACE REMOVAL - BUTT JOINT".

ALL DIMENSIONS ARE IN INCHES (MILLIMETERS) UNLESS OTHERWISE SHOWN.

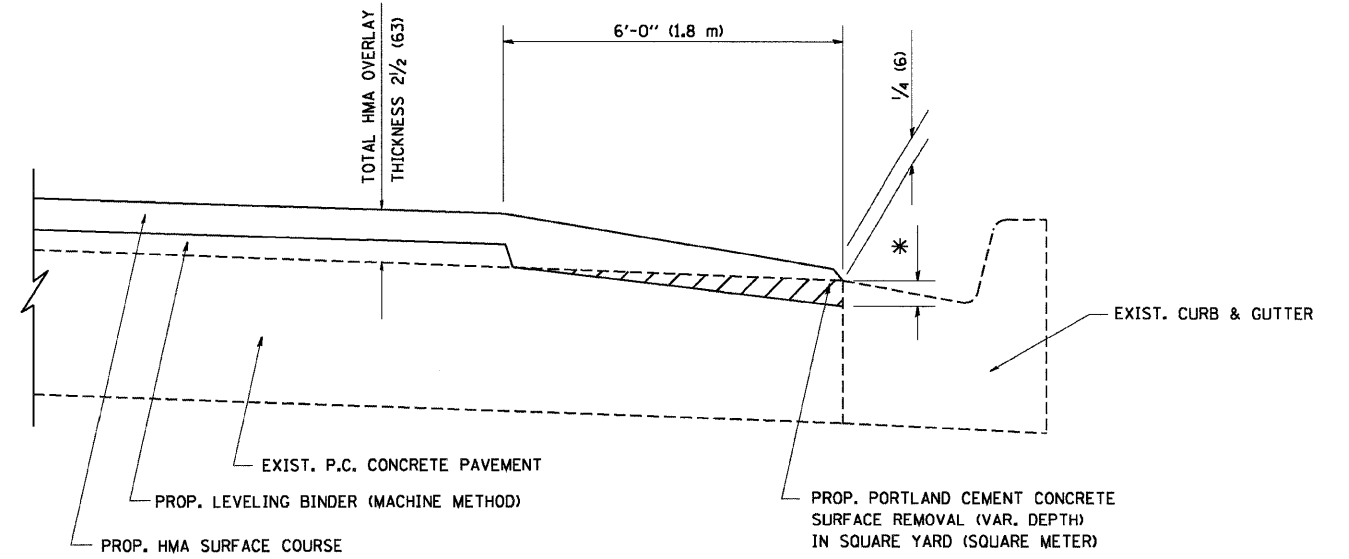
FILE NAME = W:\diets\td\22x34\bd32.dgn	USER NAME = goglionobt	DESIGNED - M. DE YONG	REVISED - R. SHAH 10-25-94
		DRAWN -	REVISED - A. ABBAS 03-21-97
	PLOT SCALE = 50.0000' / IN.	CHECKED -	REVISED - M. GOMEZ 04-06-01
	PLOT DATE = 1/4/2008	DATE - 06-13-90	REVISED - R. BORO 01-01-07

STATE OF ILLINOIS  
DEPARTMENT OF TRANSPORTATION

BUTT JOINT AND  
HMA TAPER DETAILS

SCALE: NONE SHEET NO. 1 OF 1 SHEETS STA. TO STA.

F.A.U. RTE.	SECTION	COUNTY	TOTAL SHEETS	SHEET NO.
1332/2865	2009-049 RS	COOK	19	13
BD400-05 BD32		CONTRACT NO. 60H09		
FED. ROAD DIST. NO. 1 ILLINOIS FED. AID PROJECT				



HMA TAPER AT  
EDGE OF P.C.C. PAVEMENT

HMA SURFACE	THICKNESS	LEVELING BINDER	THICKNESS	* MILLING AT GUTTER FLAG
C OR D	1 1/2 (38)	1 (25)	1 1/4 (33)	
F	1 3/4 (44)	3/4 (19)	1 1/2 (38)	

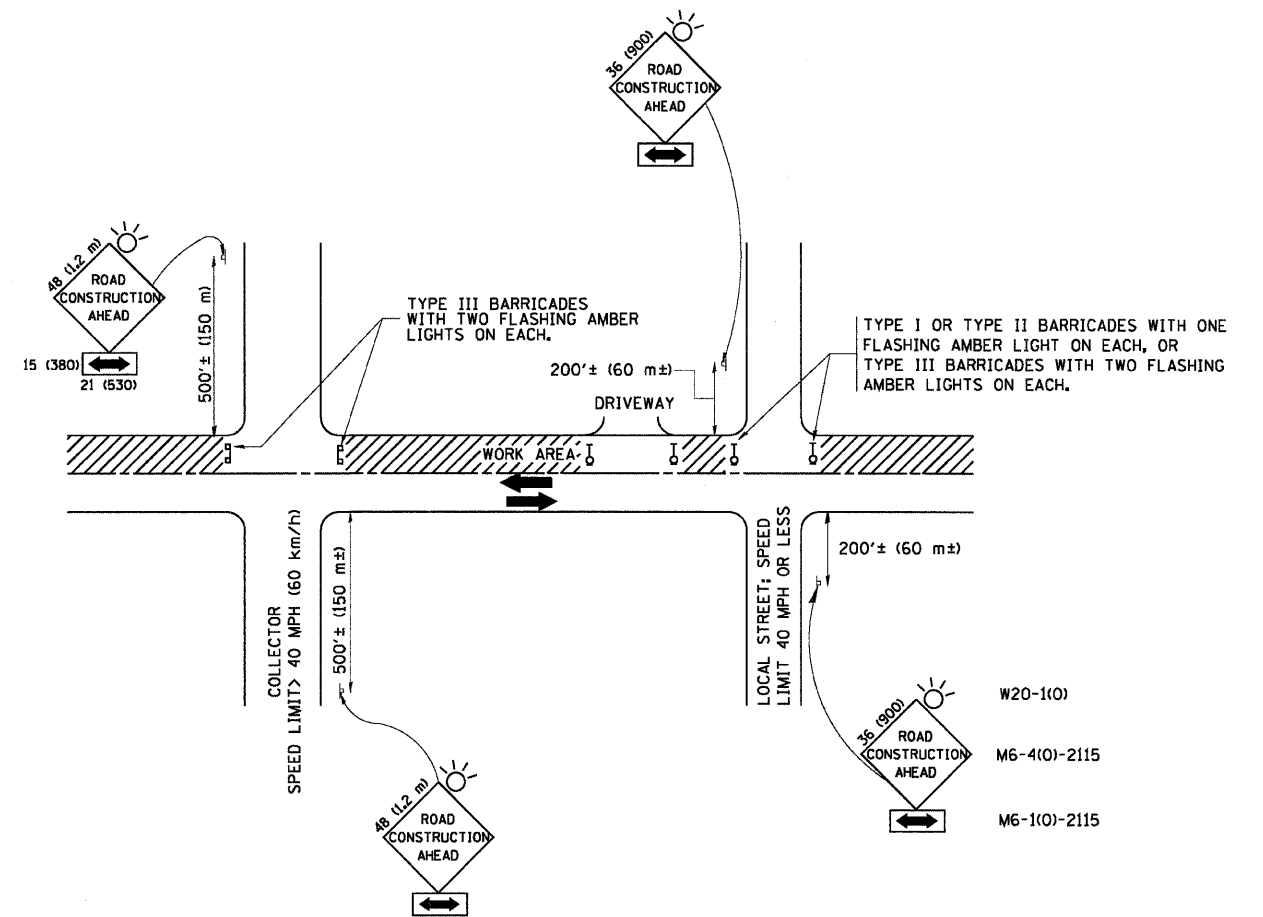
ALL DIMENSIONS ARE IN INCHES (MILLIMETERS) UNLESS OTHERWISE SHOWN.

FILE NAME = W:\distatd\22x34\bd33.dgn	USER NAME = geglennobt	DESIGNED - R. SHAH	REVISED - R. SHAH 10-25-94
		DRAWN - JIS	REVISED - A. ABBAS 05-05-99
	PLOT SCALE = 50.0000' / IN.	CHECKED - A. ABBAS	REVISED - E. GOMEZ 12-21-00
	PLOT DATE = 1/4/2008	DATE - 09-10-94	REVISED - R. BORO 01-01-07

**STATE OF ILLINOIS  
DEPARTMENT OF TRANSPORTATION**

<b>HMA TAPER AT EDGE OF P.C.C. PAVEMENT</b>			
SCALE: NONE	SHEET NO. 1 OF 1 SHEETS	STA.	TO STA.

F.A.U. RTE.	SECTION	COUNTY	TOTAL SHEETS	SHEET NO.
1332/2865	2009-049 R5	COOK	19	14
<b>BD400-06 (BD33)</b>		<b>CONTRACT NO. 60H09</b>		
FED. ROAD DIST. NO. 1 ILLINOIS FED. AID PROJECT				



TRAFFIC CONTROL AND PROTECTION FOR SIDE ROADS, INTERSECTIONS, AND DRIVEWAYS

NOTES:

- A. FOR NO LANE RESTRICTION ON THE SIDE ROAD OR DRIVEWAYS
  1. SIDE ROAD WITH A SPEED LIMIT OF 40 MPH (60 km/h) OR LESS AS SHOWN ON THE DRAWING AND AS DIRECTED BY THE ENGINEER:
    - a) ONE ROAD CONSTRUCTION AHEAD SIGN 36 x 36 (900x900) WITH A FLASHER AND FLAG MOUNTED ON IT APPROXIMATELY 200' (60 m) IN ADVANCE OF THE MAIN ROUTE.
    - b) THE CLOSED PORTION OF THE MAIN ROUTE SHALL BE PROTECTED BY BLOCKING WITH TYPE I, TYPE II OR TYPE III BARRICADES, 1/3 OF THE CROSS SECTION OF THE CLOSED PORTION.
  2. SIDE ROAD WITH A SPEED LIMIT GREATER THAN 40 MPH (60 km/h) AS SHOWN ON THE DRAWING AND AS DIRECTED BY THE ENGINEER:
    - a) ONE ROAD CONSTRUCTION AHEAD SIGN 48 x 48 (1.2 m x 1.2 m) WITH A FLASHER MOUNTED ON IT APPROXIMATELY 500' (150 m) IN ADVANCE OF THE MAIN ROUTE.
    - b) THE CLOSED PORTION OF THE MAIN ROUTE SHALL BE PROTECTED BY BLOCKING WITH TYPE III BARRICADES, 1/2 OF THE CROSS SECTION OF THE CLOSED PORTION.
  3. WHEN THE SIDE ROAD LIES BETWEEN THE BEGINNING OF THE MAINLINE SIGNING AND THE WORK ZONE, A SINGLE HEADED ARROW (M6-1) SHALL BE USED IN LIEU OF THE DOUBLE HEADED ARROW (M6-4).
- B. FOR A LANE CLOSURE ON A SIDE ROAD OR DRIVEWAY:
 

USE APPLICABLE PORTIONS OF THE TYPICAL APPLICATION OF TRAFFIC CONTROL DEVICES (STD. 701501, STD. 701606 OR THE APPROPRIATE STANDARD). THE SPACING OF SIGNS AND BARRICADES SHALL BE ADJUSTED FOR FIELD CONDITIONS AS DIRECTED BY THE ENGINEER. THE DIRECTIONAL ARROW SHALL BE COVERED OR REMOVED WHEN NO LONGER CONSISTENT WITH THE SIDE ROAD LANE CLOSURE.
- C. ADVANCE WARNING SIGNS ARE TO BE OMITTED ON DRIVEWAY UNLESS OTHERWISE NOTED.
- D. THE TRAFFIC CONTROL AND PROTECTION FOR SIDE ROADS, INTERSECTIONS, AND DRIVEWAYS SHALL BE INCIDENTAL TO THE COST OF SPECIFIED TRAFFIC CONTROL STANDARDS OR ITEMS.

All dimensions are in millimeters (inches) unless otherwise shown.

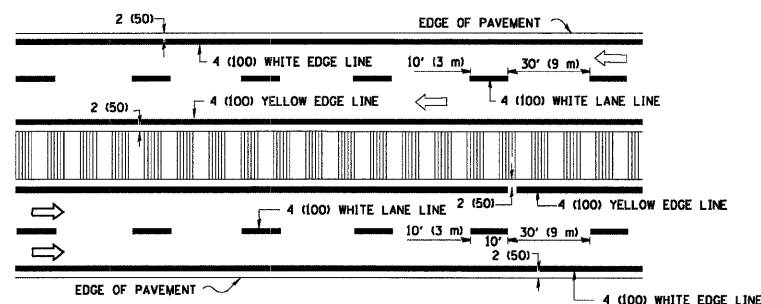
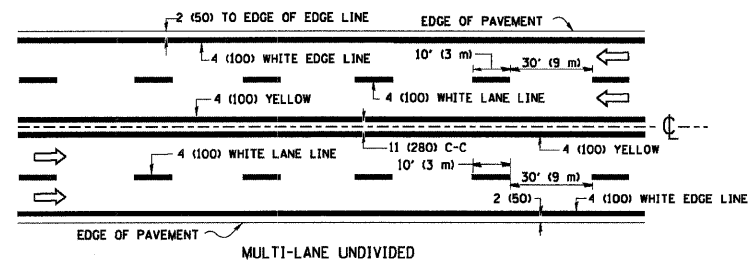
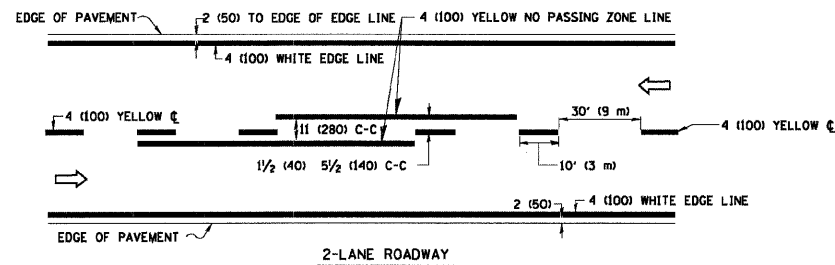
FILE NAME = W:\diststd\22x34\to10.dgn	USER NAME = goglianobt	DESIGNED - LHA	REVISED - J. OBERLE 10-18-95
		DRAWN -	REVISED - A. HOUSEH 03-06-96
	PLOT SCALE = 50.000' / IN.	CHECKED -	REVISED - A. HOUSEH 10-15-96
	PLOT DATE = 1/4/2008	DATE - 06-89	REVISED - T. RAMMACHER 01-06-00

STATE OF ILLINOIS  
DEPARTMENT OF TRANSPORTATION

TRAFFIC CONTROL AND PROTECTION FOR  
SIDE ROADS, INTERSECTIONS, AND DRIVEWAYS

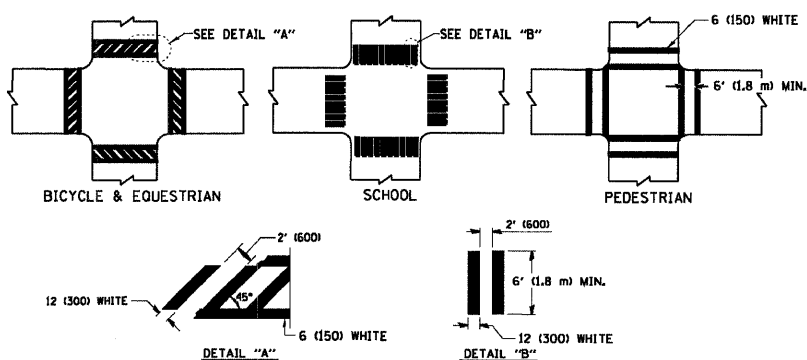
SCALE: NONE SHEET NO. 1 OF 1 SHEETS STA. TO STA.

F.A.J. RTE.	SECTION	COUNTY	TOTAL SHEETS	SHEET NO.
1332/2865	2009-049 RS	COOK	19	15
TC-10			CONTRACT NO. 60H09	
FED. ROAD DIST. NO. 1 ILLINOIS FED. AID PROJECT				

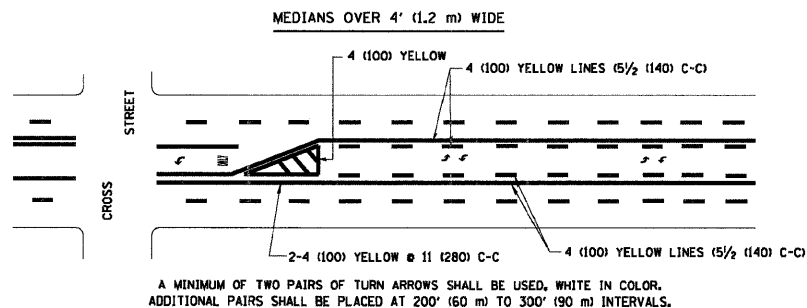
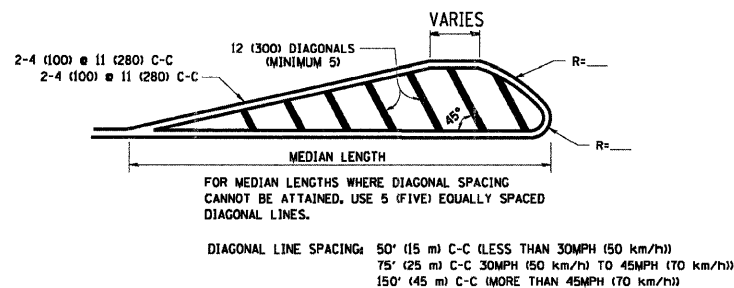
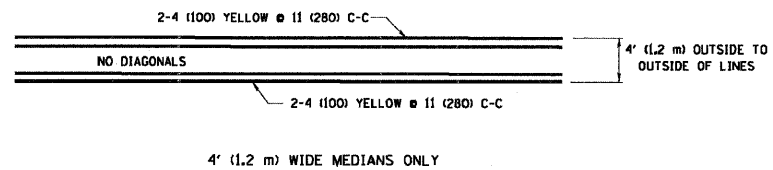


NOTE: MEDIANS WITH BARRIER CURB DO NOT REQUIRE AN EDGE LINE

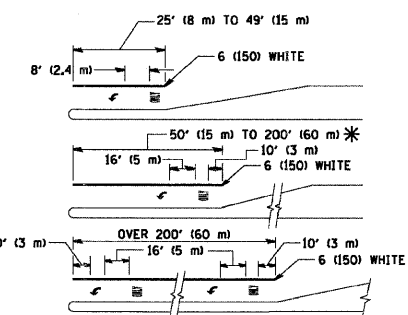
**TYPICAL LANE AND EDGE LINE MARKING**



**TYPICAL CROSSWALK MARKING**

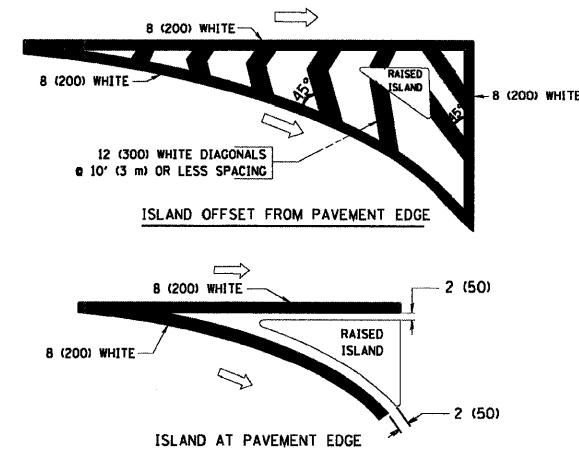


**TYPICAL PAINTED MEDIAN MARKING**



FULL SIZE LETTERS 8' (2.4 m) AND ARROWS SHALL BE USED.  
 \* TURN LANES IN EXCESS OF 400' (120 m) IN LENGTH MAY HAVE AN ADDITIONAL SET OF ARROW - "ONLY" INSTALLED MIDWAY BETWEEN THE OTHER TWO SETS OF ARROW - "ONLY".

**TYPICAL TURN LANE MARKING**



**TYPICAL ISLAND MARKING**

TYPE OF MARKING	WIDTH OF LINE	PATTERN	COLOR	SPACING / REMARKS
CENTERLINE ON 2 LANE PAVEMENT	4 (100)	SKIP-DASH	YELLOW	10' (3 m) LINE WITH 30' (9 m) SPACE
CENTERLINE ON MULTI-LANE UNDIVIDED PAVEMENT	2 @ 4 (100)	SOLID	YELLOW	11 (280) C-C
NO PASSING ZONE LINES FOR ONE DIRECTION FOR BOTH DIRECTIONS	4 (100) 2 @ 4 (100)	SOLID SOLID	YELLOW YELLOW	5/2 (140) C-C FROM SKIP-DASH CENTERLINE 11 (280) C-C OMIT SKIP-DASH CENTERLINE BETWEEN
LANE LINES	4 (100) 5 (125) ON FREEWAYS	SKIP-DASH SKIP-DASH	WHITE WHITE	10' (3 m) LINE WITH 30' (9 m) SPACE
DOTTED LINES (EXTENSIONS OF CENTER, LANE OR TURN LANE MARKINGS)	SAME AS LINE BEING EXTENDED	SKIP-DASH	SAME AS LINE BEING EXTENDED	2' (600) LINE WITH 6' (1.8 m) SPACE
EDGE LINES	4 (100)	SOLID	YELLOW-LEFT WHITE-RIGHT	OUTLINE MOUNTABLE MEDIANS IN YELLOW; EDGE LINES ARE NOT USED NEXT TO BARRIER CURB
TURN LANE MARKINGS	6 (150) LINE; FULL SIZE LETTERS & SYMBOLS (8' (2.4m))	SOLID	WHITE	SEE TYPICAL TURN LANE MARKING DETAIL
TWO WAY LEFT TURN MARKING	2 @ 4 (100) EACH DIRECTION 8' (2.4m) LEFT ARROW	SKIP-DASH AND SOLID IN PAIRS	YELLOW WHITE	10' (3 m) LINE WITH 30' (9 m) SPACE FOR SKIP-DASH; 5/2 (140) C-C BETWEEN SOLID LINE AND SKIP-DASH LINE SEE TYPICAL TWO-WAY LEFT TURN MARKING DETAIL
CROSSWALK LINES (PEDESTRIAN & LONGITUDINAL BARS (SCHOOL))	2 @ 6 (150) 12 (300) @ 45° 12 (300) @ 90°	SOLID SOLID SOLID	WHITE WHITE WHITE	NOT LESS THAN 6' (1.8 m) APART 2' (600) APART 2' (600) APART SEE TYPICAL CROSSWALK MARKING DETAILS.
STOP LINES	24 (600)	SOLID	WHITE	PLACE 4' (1.2 m) IN ADVANCE OF AND PARALLEL TO CROSSWALK, IF PRESENT, OTHERWISE, PLACE AT DESIRED STOPPING POINT. PARALLEL TO CROSSROAD CENTERLINE, WHERE POSSIBLE
PAINTED MEDIANS	2 @ 4 (100) WITH 12 (300) DIAGONALS @ 45° NO DIAGONALS USED FOR 4' (1.2 m) WIDE MEDIANS	SOLID	YELLOW; TWO WAY TRAFFIC WHITE; ONE WAY TRAFFIC	11 (280) C-C FOR THE DOUBLE LINE SEE TYPICAL PAINTED MEDIAN MARKING.
GORE MARKING AND CHANNELIZING LINES	8 (200) WITH 12 (300) DIAGONALS @ 45°	SOLID	WHITE	DIAGONALS: 15' (4.5 m) C-C (LESS THAN 30MPH (50 km/h)) 20' (6 m) C-C (30MPH (50 km/h) TO 45MPH (70 km/h)) 30' (9 m) C-C (OVER 45MPH (70 km/h))
RAILROAD CROSSING	24 (600) TRANSVERSE LINES; "RR" (5 6' (1.8 m) LETTERS; 16 (400) LINE FOR "X"	SOLID	WHITE	SEE STATE STANDARD 780001 AREA OF: "R"=3.6 SQ. FT. (0.33 m <sup>2</sup> ) EACH "X"=54.0 SQ. FT. (5.0 m <sup>2</sup> )
SHOULDER DIAGONALS	12 (300) @ 45°	SOLID	WHITE - RIGHT YELLOW - LEFT	50' (15 m) C-C (LESS THAN 30MPH (50 km/h)) 75' (25 m) C-C (30 MPH (50 km/h) TO 45MPH (70 km/h)) 150' (45 m) C-C (OVER 45MPH (70 km/h))

FOR FURTHER DETAILS ON PAVEMENT MARKING REFER TO STANDARD SPECIFICATIONS FOR ROAD AND BRIDGE CONSTRUCTION AND STATE STANDARD 780001.

All dimensions are in inches (millimeters) unless otherwise shown.

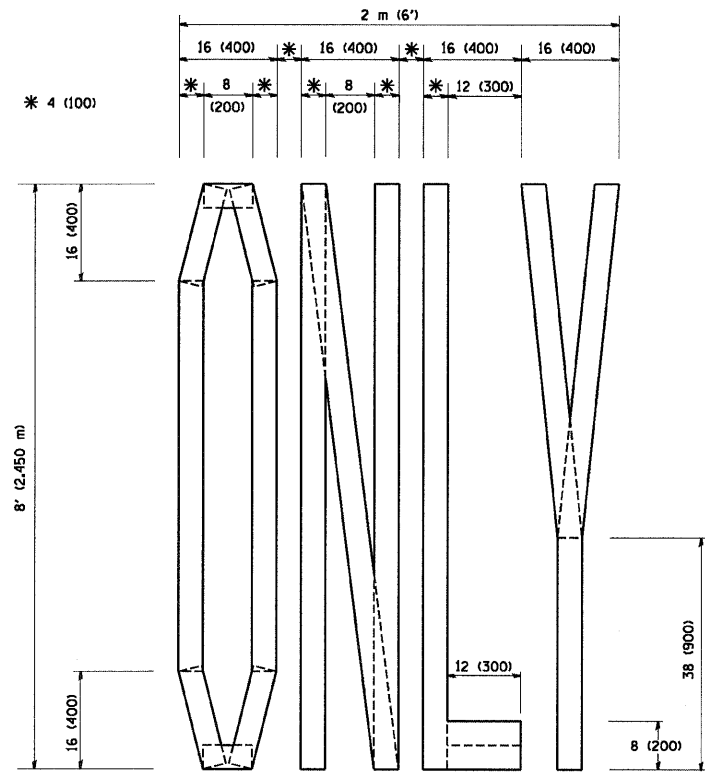
FILE NAME = W:\dsts\td\22x34\to13.dgn	USER NAME = goglianob	DESIGNED - EVERS	REVISED -T, RAMMACHER 10-27-94
		DRAWN -	REVISED -A, HOUSEH 10-09-96
	PLOT SCALE = 50,000 ' / IN.	CHECKED -	REVISED -A, HOUSEH 10-17-96
	PLOT DATE = 1/4/2008	DATE - 03-19-90	REVISED -T, RAMMACHER 01-06-00

**STATE OF ILLINOIS  
DEPARTMENT OF TRANSPORTATION**

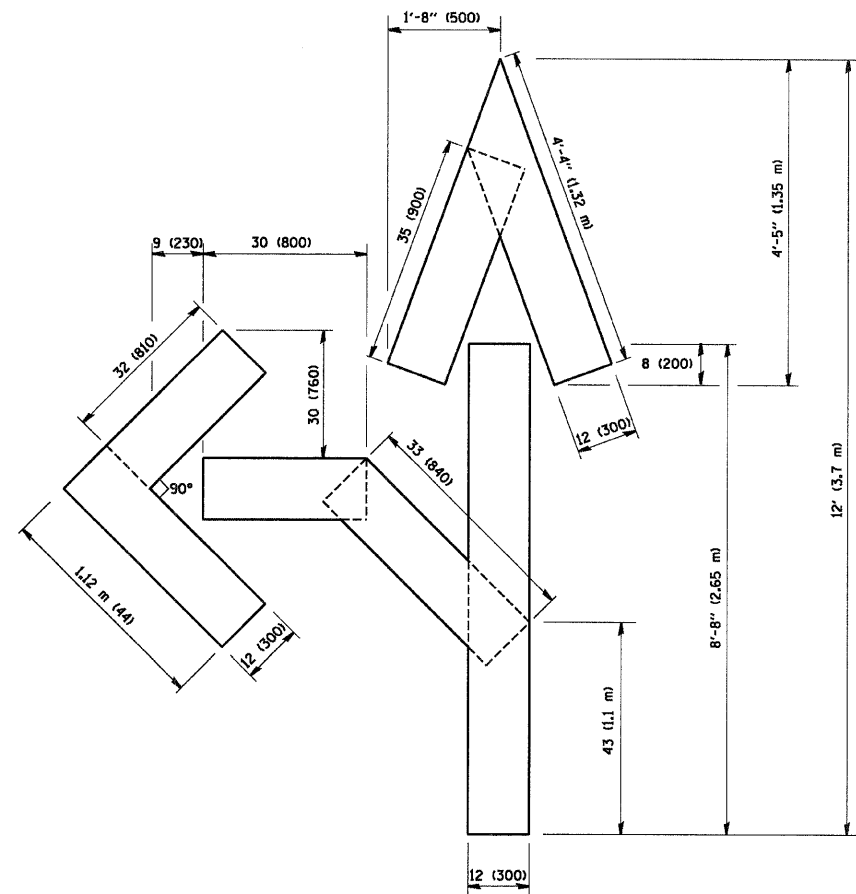
DISTRICT ONE			
TYPICAL PAVEMENT MARKINGS			
SCALE: NONE	SHEET NO. 1 OF 1 SHEETS	STA. TO STA.	

F.A.J. RTE.	SECTION	COUNTY	TOTAL SHEETS	SHEET NO.
1332/2865	2009-049 RS	COOK	19	16
TC-13		CONTRACT NO. 60H09		
FED. ROAD DIST. NO. 1 ILLINOIS FED. AID PROJECT				

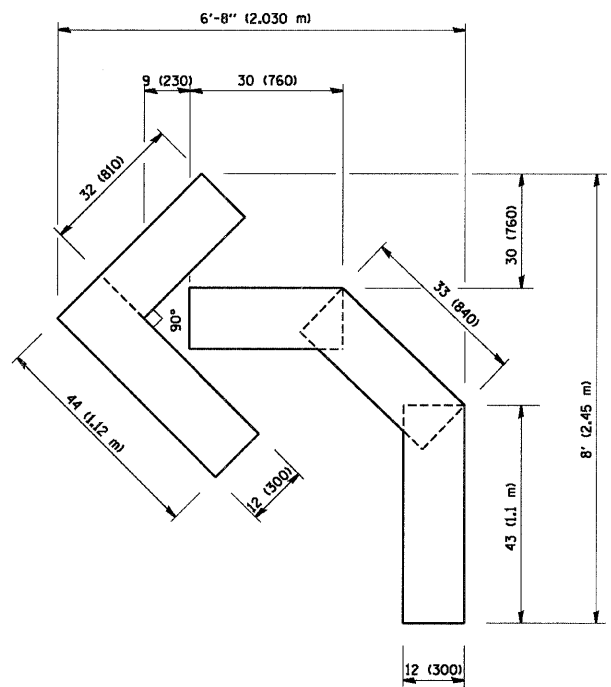




QUANTITY  
 4 (100) LINE = 64.1 ft. (19.7 m)  
 21.1 sq. ft. (1.97 sq. m)



QUANTITY  
 4 (100) LINE = 82.5 ft. (25.3 m)  
 27.5 sq. ft. (2.53 sq. m)



QUANTITY  
 4 (100) LINE = 45.5 ft. (13.9 m)  
 15.2 sq. ft. (1.39 sq. m)

All dimensions are in inches (millimeters) unless otherwise shown.

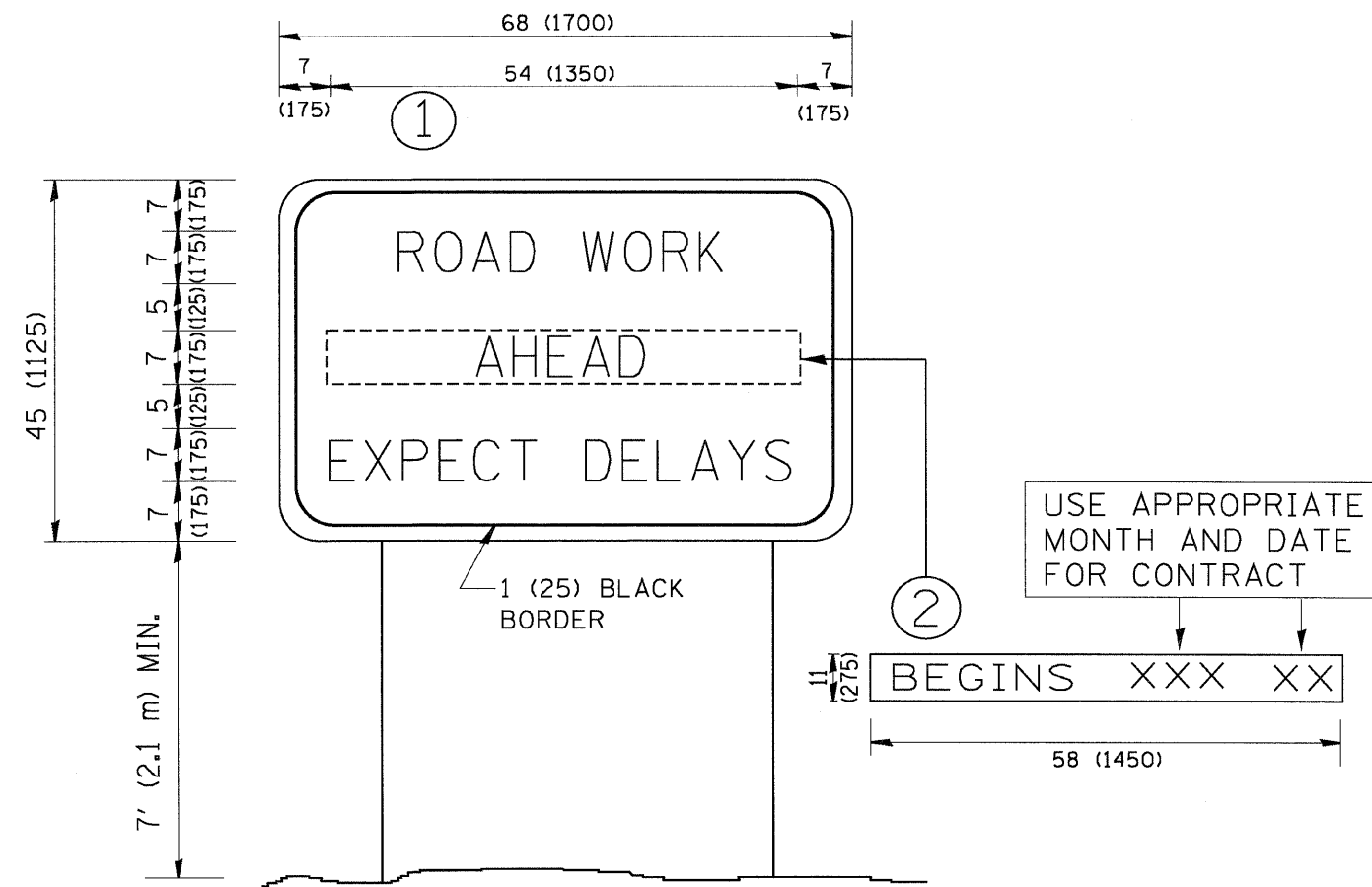
FILE NAME = W:\diststd\22x34\ta16.dgn	USER NAME = geglienobt	DESIGNED -	REVISED -T. RAMMACHER 06-05-96
		DRAWN -	REVISED -T. RAMMACHER 11-04-97
	PLOT SCALE = 50.0000 ' / IN.	CHECKED -	REVISED -T. RAMMACHER 03-02-98
	PLOT DATE = 1/4/2008	DATE - 09-18-94	REVISED -E. GOMEZ 08-28-00

STATE OF ILLINOIS  
 DEPARTMENT OF TRANSPORTATION

PAVEMENT MARKING LETTERS AND SYMBOLS  
 FOR TRAFFIC STAGING

SCALE: NONE SHEET NO. 1 OF 1 SHEETS STA. TO STA.

F.A.U. RTE.	SECTION	COUNTY	TOTAL SHEETS	SHEET NO.
1332/2865	2009-049 RS	COOK	19	17
TC-16		CONTRACT NO.	60H09	
FED. ROAD DIST. NO. 1 ILLINOIS FED. AID PROJECT				



**NOTES:**

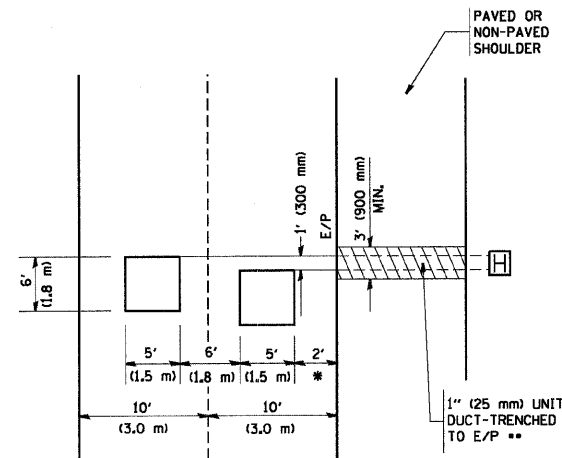
1. USE BLACK LETTERING ON ORANGE BACKGROUND.
2. ERECT SIGNS IN ADVANCE OF THE LOCATION FOR THE "ROAD CONSTRUCTION AHEAD" SIGN AT LOCATIONS AS DIRECTED BY THE ENGINEER.
3. ERECT SIGN ① WITH INSTALLED PANEL ② ONE WEEK PRIOR TO THE START OF CONSTRUCTION.
4. REMOVE PANEL ② SOON AFTER THE START OF CONSTRUCTION.
5. SEE SPECIAL PROVISION FOR "TEMPORARY INFORMATION SIGNING" FOR ADDITIONAL INFORMATION.
6. ONE SIGN ASSEMBLY EQUALS 25.70 SQ. FT. (2.3 SQ. M.)
7. SHALL BE PAID FOR AS TEMPORARY INFORMATION SIGNING.

ALL DIMENSIONS ARE IN INCHES (MILLIMETERS) UNLESS OTHERWISE SHOWN.

FILE NAME = W:\diststd\22x34\tc22.dgn	USER NAME = geglinoht	DESIGNED -	REVISED - R. MIRS 09-15-97	<b>STATE OF ILLINOIS DEPARTMENT OF TRANSPORTATION</b>	<b>ARTERIAL ROAD INFORMATION SIGN</b>			F.A.L. RTE.	SECTION	COUNTY	TOTAL SHEETS	SHEET NO.	
		DRAWN -	REVISED - R. MIRS 12-11-97		SCALE: NONE	SHEET NO. 1 OF 1 SHEETS	STA.	TO STA.	1332/2865	2009-049 RS	COOK	19	18
		CHECKED -	REVISED - T. RAMMACHER 02-02-99					<b>TC-22</b>		<b>CONTRACT NO. 60H09</b>			
		DATE -	REVISED - C. JUCIUS 01-31-07					FED. ROAD DIST. NO. 1 ILLINOIS FED. AID PROJECT					

**LOOPS NEXT TO SHOULDERS**

PROVIDE A PAVEMENT REPLACEMENT NOTE WHICH SHOULD EQUAL 3' (900 mm) X WIDTH OF PAVED SHOULDER.

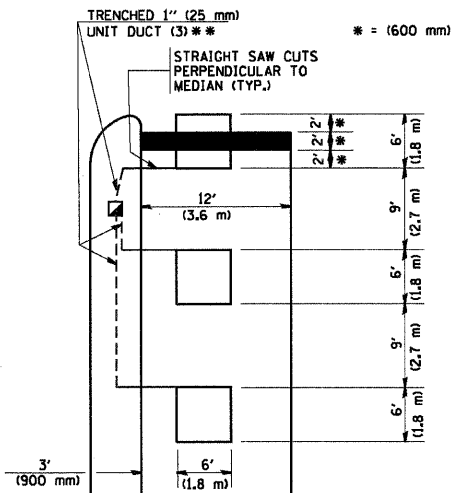


\* = (600 mm)

\*\* UNIT DUCT IS TO BE SHOWN ON PLAN SHEETS BUT SHALL NOT BE INCLUDED IN THE PAY ITEMS.

**LEFT TURN LANES WITH MEDIANS  
VOLUME DENSITY ("FAR OUT" DETECTION)  
ON SAME APPROACH  
(PROTECTED / PERMITTED LEFT TURN PHASING)**

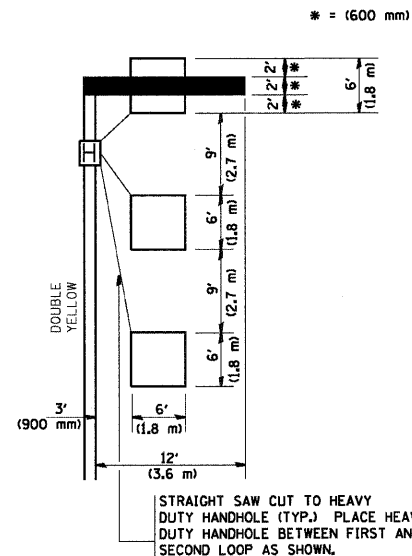
HANDHOLE LOCATION MAY VARY DEPENDING ON GEOMETRICS AND DESIGN OF TRAFFIC SIGNALS. HEAVY-DUTY HANDHOLES TO BE USED WHEN THE MEDIAN IS MOUNTABLE. REFER TO STANDARD 814001 TO ENSURE THAT HANDHOLE FITS IN MEDIAN.



\*\* UNIT DUCT IS TO BE SHOWN ON PLAN SHEETS BUT SHALL NOT BE INCLUDED IN THE PAY ITEMS.

NOTE: DUAL LEFT TURNS NOT SHOWN REFER TO PLAN SHEET FOR DETECTOR LOOP REPLACEMENT

**LEFT TURN LANES WITHOUT MEDIANS  
VOLUME DENSITY ("FAR OUT" DETECTION)  
ON SAME APPROACH  
(PROTECTED / PERMITTED LEFT TURN PHASING)**



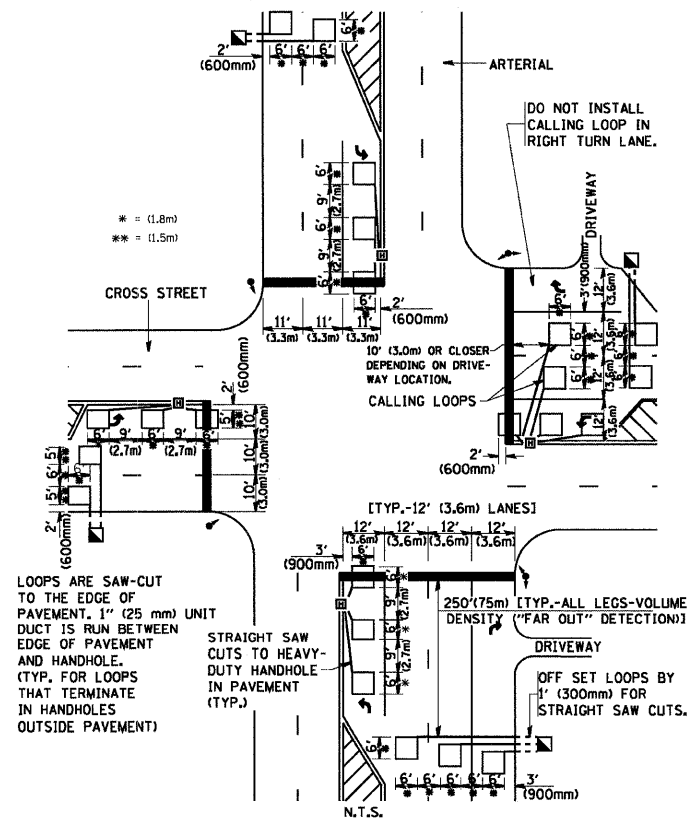
NOTE: DUAL LEFT TURNS NOT SHOWN REFER TO PLAN SHEET FOR DETECTOR LOOP REPLACEMENT

**NOTES:**

**VEHICLES LOOP DETECTORS**

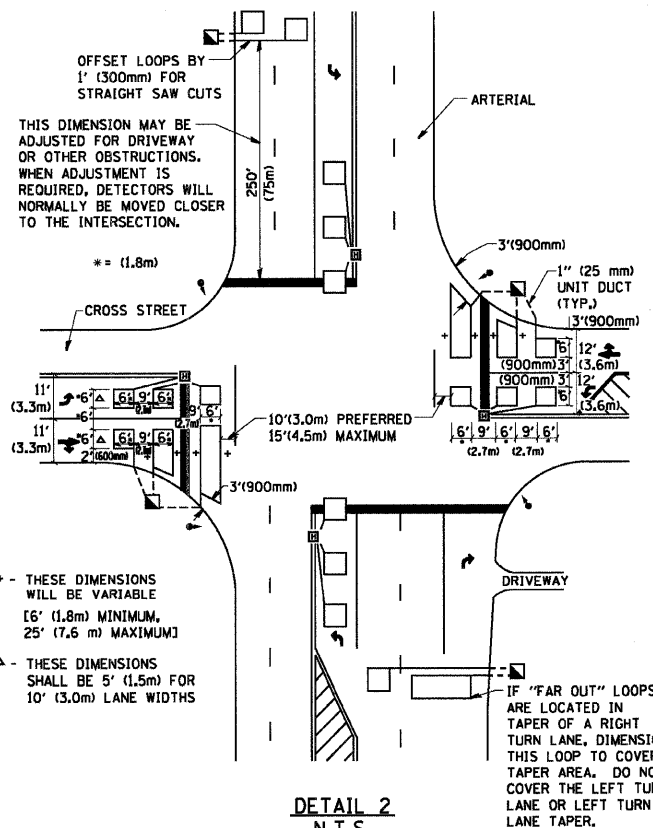
- \* ALL LEAD IN CABLE SHALL BE TWO CONDUCTOR NO. 14 TWISTED, SHIELDED.
- \* EACH DETECTOR LOOP SHALL HAVE ITS OWN SAW CUT FROM THE LOOP TO THE EDGE OF PAVEMENT OR TO A HANDHOLE IN THE PAVEMENT.
- \* EACH DETECTOR LOOP SHALL HAVE ITS OWN ONE INCH (25 mm) UNIT DUCT BETWEEN THE EDGE OF PAVEMENT AND THE FIRST HANDHOLE OR JUNCTION BOX. EACH UNIT DUCT RUN SHALL BE SHOWN ON THE PLANS BY THE DESIGNER, BUT SHALL NOT BE PAID FOR SEPARATELY. THIS ITEM IS INCIDENTAL TO THE PAY ITEM FOR DETECTOR LOOPS.
- \* ONE DIMENSION OF ALL DETECTOR LOOPS SHALL BE SIX FEET (1.8 m)
- \* EACH LANE OF NON-LOCKING, PRESENCE DETECTION AND EACH LANE OF A DOUBLE LEFT TURN LANE REQUIRES A SEPARATE INDUCTIVE LOOP DETECTOR AND LEAD IN CABLE.
- \* WHEN NON-LOCKING, PRESENCE DETECTION IS USED, MORE THAN ONE LOOP PER LANE IS REQUIRED BEHIND THE STOP BAR (i.e. 1-1/2, 1-3/4, 2).
- \* WHEN SYSTEM LOOPS ARE REQUIRED ON AN APPROACH OF AN INTERSECTION, THE LOOPS USED FOR VOLUME DENSITY AND INTERSECTION TIMING SHALL ALSO BE USED AS SYSTEM DETECTORS. EACH ONE OF THESE TYPE OF LOOPS REQUIRES A SEPARATE TWO CONDUCTOR NO. 14 TWISTED SHIELDED CABLE AND A SEPARATE INDUCTIVE LOOP DETECTOR WHEN NEW CONTROLLERS ARE UTILIZED. THE DESIGNER SHALL LABEL THESE TYPES OF LOOPS AS "INTERSECTION AND SAMPLING (SYSTEM) DETECTORS" ON THE SIGNAL LAYOUT, THE INTERCONNECT PLAN AND THE SYSTEM CABLE PLAN. WHEN AN EXISTING CONTROLLER IS UTILIZED FOR THIS TYPE OF DETECTION, THE PAY ITEM "INDUCTIVE LOOP DETECTOR WITH SYSTEM OUTPUT" SHOULD BE USED.

**ARTERIAL-VOLUME DENSITY ("FAR OUT" DETECTION)  
CROSS STREET-VOLUME DENSITY ("FAR OUT" DETECTION)**



**DETAIL 1  
N.T.S.**

**ARTERIAL-VOLUME DENSITY ("FAR OUT" DETECTION)  
CROSS STREET-NON VOLUME DENSITY ("UPTIGHT" PRESENCE DETECTION)**



**DETAIL 2  
N.T.S.**

**PLACEMENT OF DETECTORS**

THE FOLLOWING FIGURES REPRESENT THE MOST COMMON DETECTOR LOOP LOCATIONS AND SIZES. ADJUSTMENTS WILL BE NECESSARY FOR SPECIFIC GEOMETRIC CONSIDERATIONS.

LOCATIONS AND DIMENSIONS OF DETECTOR LOOPS ARE REQUIRED ON ALL SIGNAL LAYOUT PLAN SHEETS.

"FAR OUT" DETECTION REFERS TO LOCKING, PRESENCE TYPE DETECTION LOCATED IN THRU LANES, RIGHT TURN LANES, AND RIGHT TURN LANE TAPER AREAS (IF APPLICABLE), USUALLY 250' (75 m) IN ADVANCE OF STOP BARS. "UPTIGHT" DETECTION REFERS TO NON-LOCKING PRESENCE TYPE DETECTION LOCATED IN ALL LANES AND 10'-15' (3.0 m-4.5 m) BEHIND THE CROSSING STREET'S EDGE OF PAVEMENT EXTENDED.

**NOTE:**

ALL DETAILS AND NOTES SHOWN ARE FROM THE I.D.O.T. DISTRICT 1 TRAFFIC SIGNAL DESIGN GUIDELINES DATED JANUARY 1995

THIS DRAWING HAS BEEN PREPARED TO ASSIST THE RESIDENT ENGINEER FOR ALL ROADWAY RESURFACING OR S.M.A.R.T. PROJECTS WHERE THE DIMENSIONS ARE NOT SHOWN ON THE PLANS AND THE FINAL LOCATIONS FOR CROSSWALKS OR STOP BARS ARE NOT DETERMINED.

FILE NAME = W:\diststd\22x34\ts07.dgn	USER NAME = gaglienob	DESIGNED -	REVISED -	<b>STATE OF ILLINOIS DEPARTMENT OF TRANSPORTATION</b>	<b>DISTRICT 1 - DETECTOR LOOP INSTALLATION DETAILS FOR ROADWAY RESURFACING</b>	F.A.U. RTE.	SECTION	COUNTY	TOTAL SHEETS	SHEET NO.	
	PLOT SCALE = 5/8" = 1' IN.	DRAWN -	REVISED -			1332/2865	2009-049 RS	COOK	19	19	
	PLOT DATE = 1/4/2008	CHECKED - R.K.F.	REVISED -			TS-07		CONTRACT NO.		60H09	
		DATE	REVISED -			SCALE: NONE	SHEET NO. 1 OF 1 SHEETS	STA.	TO STA.		FED. ROAD DIST. NO. 1 ILLINOIS FED. AID PROJECT