

STATE OF ILLINOIS
 DEPARTMENT OF TRANSPORTATION
 DIVISION OF HIGHWAYS

| | | | | |
|-------------|-----------|----------|--------------------|-----------|
| F.A.U. RTE. | SECTION | COUNTY | TOTAL SHEETS | SHEET NO. |
| 2690 | 2527 RS-1 | COOK | 18 | 1 |
| | | ILLINOIS | CONTRACT NO. 60H15 | |

*18+2=20

D-91-571-09



LOCATION OF SECTION INDICATED THUS: - [black rectangle] -

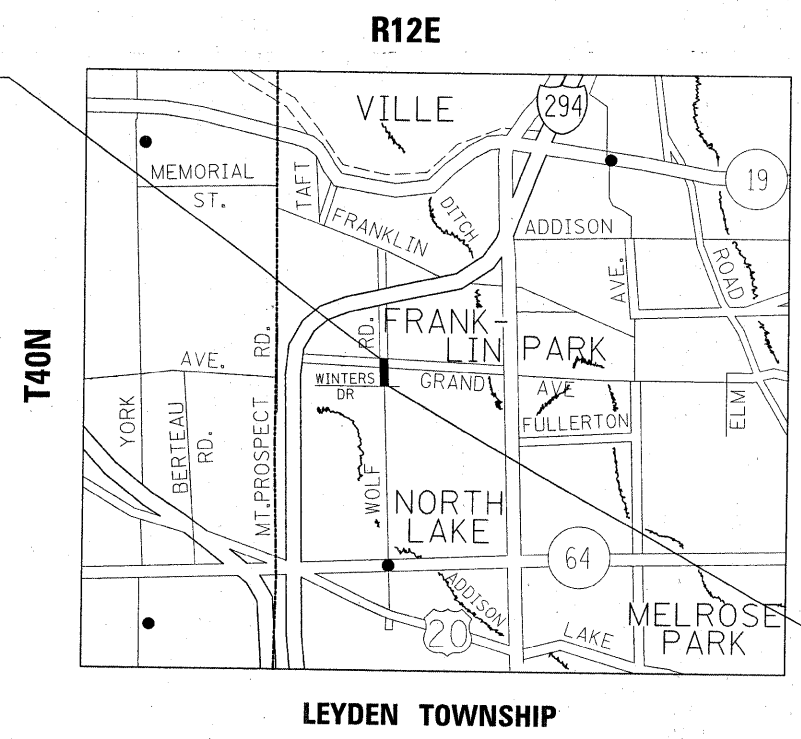
FOR INDEX OF SHEETS, SEE SHEET NO. 2

IMPROVEMENT IS LOCATED IN THE CITY OF NORTHLAKE

PROPOSED HIGHWAY PLANS

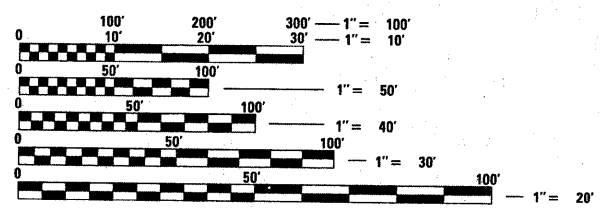
FAU ROUTE 2690: WOLF ROAD
 WINTERS DRIVE TO GRAND AVENUE
 SECTION: 2527 RS-1
 RESURFACING
 COOK COUNTY
 C-91-571-09

IMPROVEMENT ENDS STATION 34+42



TRAFFIC DATA
 SPEED LIMIT=30 MPH
 2006 ADT=14,600

IMPROVEMENT BEGINS STATION 15+52



FULL SIZE PLANS HAVE BEEN PREPARED USING STANDARD ENGINEERING SCALES. REDUCED SIZED PLANS WILL NOT CONFORM TO STANDARD SCALES. IN MAKING MEASUREMENTS ON REDUCED PLANS, THE ABOVE SCALES MAY BE USED.

J.U.L.I.E.
 JOINT UTILITY LOCATION INFORMATION FOR EXCAVATION
 1-800-892-0123
 OR 811

PROJECT ENGINEER: DAN WILGREEN (847) 705-4240
 PROJECT MANAGER: KEN ENG

CONTRACT NO. 60H15

GROSS AND NET LENGTH OF IMPROVEMENT = 1,890 LF = 0.36 MILES

STATE OF ILLINOIS
 DEPARTMENT OF TRANSPORTATION
 DIVISION OF HIGHWAYS

SUBMITTED APRIL 14, 2009
 Diana M. O'Keefe
 DEPUTY DIRECTOR OF HIGHWAYS, REGION ENGINEER

May 1, 2009
 Charles G. Ingersoll
 ENGINEER OF DESIGN AND ENVIRONMENT

May 1, 2009
 Christine M. Reed
 DIRECTOR OF HIGHWAYS, CHIEF ENGINEER

PRINTED BY THE AUTHORITY OF THE STATE OF ILLINOIS