

F.A.U. RTE.	SECTION	COUNTY	TOTAL SHEETS	SHEET NO.
1574	(0808 & 0809) RS-2	COOK	20	1
FED. ROAD DIST. NO. 1	ILLINOIS	CONTRACT NO. 60H17		

**STATE OF ILLINOIS  
DEPARTMENT OF TRANSPORTATION  
DIVISION OF HIGHWAYS**

**PROPOSED  
HIGHWAY PLANS**

**FAU 1574 103rd STREET  
SECTION: (0808 & 0809) RS-2  
PULASKI AVENUE TO WESTERN AVENUE  
RESURFACING (3P)**

**COOK COUNTY  
C-91-573-09**

FOR INDEX OF SHEETS, SEE SHEET NO. 2

**DESIGN DESIGNATION:**  
**SPEED LIMIT : 30 M.P.H.**  
**2007 ADT = 15,000**

**PROJECT LOCATED IN THE  
CITY OF CHICAGO AND THE  
VILLAGE OF EVERGREEN PARK**

**D-91-573-09**

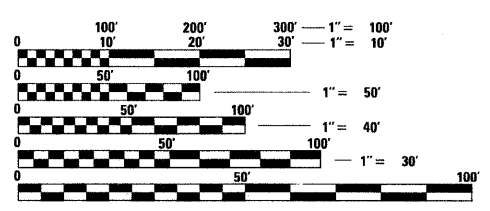
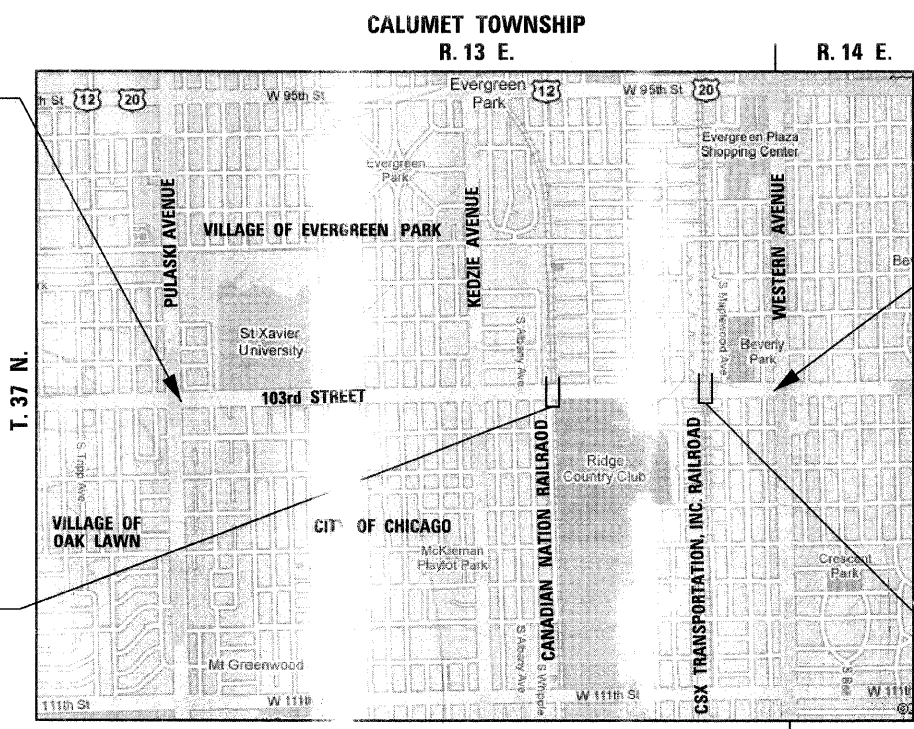


**PROJECT BEGINS  
STA. 10 + 32**

**PROJECT ENDS  
STA. 116 + 77**

**PAVING OMISSION  
STA. 76 + 45 TO  
STA. 76 + 75**

**PAVING OMISSION  
STA. 103 + 52 TO  
STA. 103 + 90**



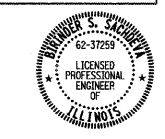
FULL SIZE PLANS HAVE BEEN PREPARED USING STANDARD ENGINEERING SCALES. REDUCED SIZED PLANS WILL NOT CONFORM TO STANDARD SCALES. IN MAKING MEASUREMENTS ON REDUCED PLANS, THE ABOVE SCALES MAY BE USED.

**J.U.L.I.E.**  
**JOINT UTILITY LOCATING INFORMATION FOR EXCAVATORS**  
1-800-892-0123  
OR 811

**DISTRICT ONE - PLAN PREP ENGINEER:**  
**KEN ENG (847) 705-4247**

**CONTRACT NO. 60H17**

**GROSS LENGTH OF PROJECT = 10,645 FEET = 2.016 MILES**  
**NET LENGTH OF PROJECT = 10,577 FEET = 2.003 MILES**



**Birinder S. Sachdeva** April 10, 2009  
**BIRINDER S. SACHDEVA, P.E.** DATE  
EXPIRES: 11-30-2009

**CR & A**  
CHRISTIAN-ROGE & ASSOCIATES, INC.  
ENGINEERS - PLANNERS - SURVEYORS  
211 W. WACKER DRIVE CHICAGO, IL. 60606  
TELEPHONE: 312-372-2023

**PRINTED BY THE AUTHORITY  
OF THE STATE OF ILLINOIS**