

F.A.P. RTE.	SECTION	COUNTY	TOTAL SHEETS	SHEET NO.
334	116 R-RS	MCHENRY	32	1
FED. ROAD DIST. NO. 1	ILLINOIS	CONTRACT NO. 60H22		

STATE OF ILLINOIS  
DEPARTMENT OF TRANSPORTATION  
DIVISION OF HIGHWAYS

**PROPOSED  
HIGHWAY PLANS**

F.A.P. 334 (US 12)  
SECTION 116 R-RS  
IL 31 (TRYON GROVE ROAD) TO LAKE COUNTY LINE  
RESURFACING (3P)

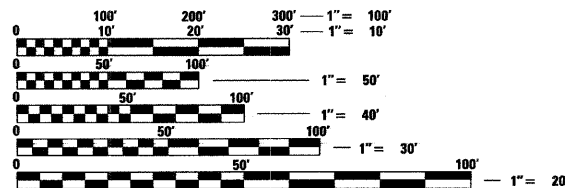
**MCHENRY COUNTY  
C-91-592-09**

FOR INDEX OF SHEETS, SEE SHEET NO. 2

THESE IMPROVEMENTS ARE LOCATED WITHIN  
THE VILLAGES OF JOHNSBURG, RINGWOOD  
AND RICHMOND

**TRAFFIC DATA**

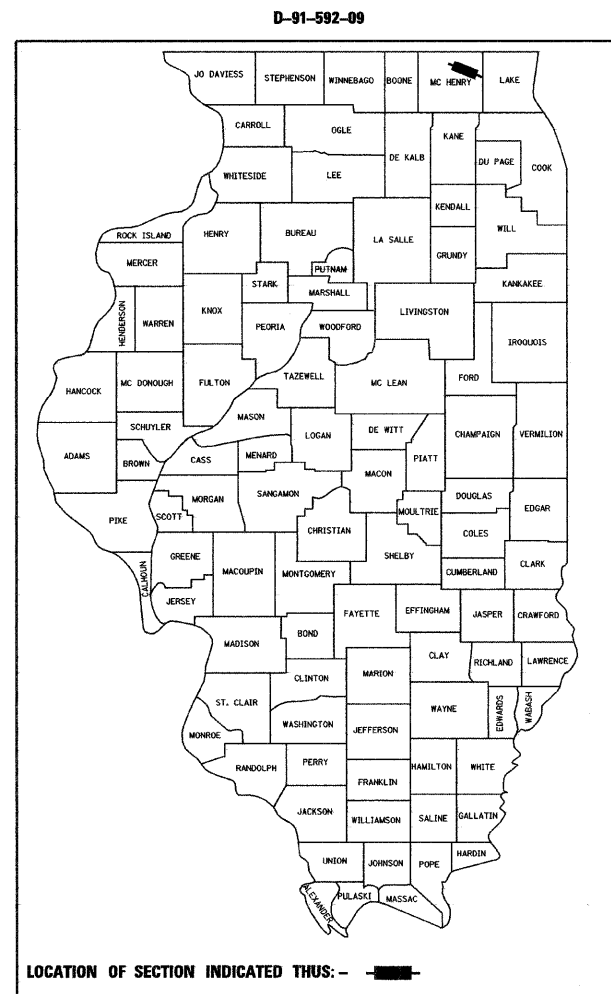
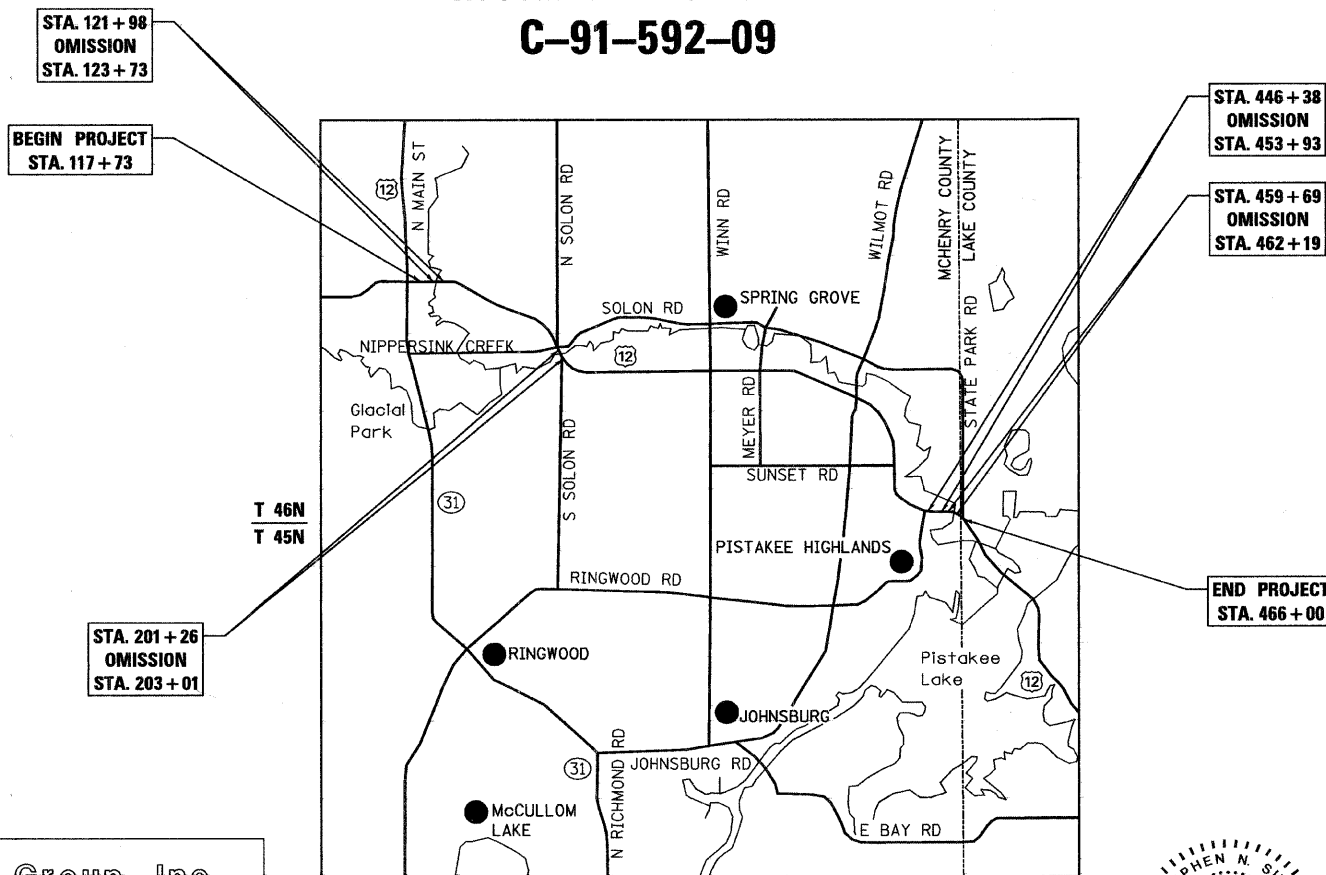
2007 ADT - 14,300  
POSTED SPEED LIMIT - 55 MPH



FULL SIZE PLANS HAVE BEEN PREPARED USING STANDARD  
ENGINEERING SCALES. REDUCED SIZED PLANS WILL NOT  
CONFORM TO STANDARD SCALES. IN MAKING MEASUREMENTS  
ON REDUCED PLANS, THE ABOVE SCALES MAY BE USED.

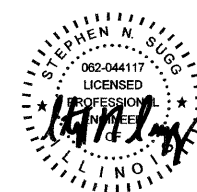
J.U.L.I.E.  
JOINT UTILITY LOCATION INFORMATION FOR EXCAVATION  
1-800-892-0123  
OR 811

**Giorba Group, Inc.**  
DESIGN FIRM  
REGISTRATION NUMBER  
184-001016  
CONSULTING ENGINEERS  
SUITE 402, 5507 NORTH CUMBERLAND AVE  
CHICAGO, ILLINOIS 60656 # (773) 775-4009



LOCATION OF SECTION INDICATED THUS: - [shaded area] -

STATE OF ILLINOIS  
DEPARTMENT OF TRANSPORTATION  
DIVISION OF HIGHWAYS  
SUBMITTED APRIL 14 2009  
Dirin M. O'Keefe  
DEPUTY DIRECTOR OF HIGHWAYS, REGION ENGINEER  
May 1, 2009  
Charles E. Ingersoll  
ENGINEER OF DESIGN AND ENVIRONMENT  
May 1, 2009  
Christine M. Reed  
DIRECTOR OF HIGHWAYS, CHIEF ENGINEER



DATE: 4/13/2009  
SEAL EXPIRES: 11/30/2009

GROSS LENGTH OF PROJECT = 34,827 FT = 6.60 MI.  
NET LENGTH OF PROJECT = 33,472 FT = 6.34 MI.

**PRINTED BY THE AUTHORITY  
OF THE STATE OF ILLINOIS**

DISTRICT 1 DESIGN PLAN PREPARATION ENGINEER: K. ENG (847)705-4247

CONTRACT NO. 60H22