

F.A.P. RTE.	SECTION	COUNTY	TOTAL SHEETS	SHEET NO.
334	SY-1-RS-4	LAKE	28	1
FED. ROAD DIST. NO. 1		ILLINOIS	CONTRACT NO. 60H24	

STATE OF ILLINOIS
DEPARTMENT OF TRANSPORTATION
DIVISION OF HIGHWAYS

**PROPOSED
HIGHWAY PLANS**
F.A.P. ROUTE 334: US RTE 12 (RAND ROAD)
IL RTE 22 TO OLD RAND ROAD
SECTION: SY-1-RS-4
RESURFACING (3P)
LAKE COUNTY
C-91-594-09

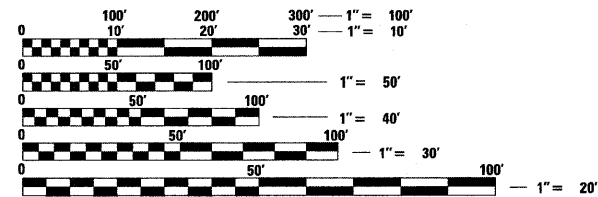
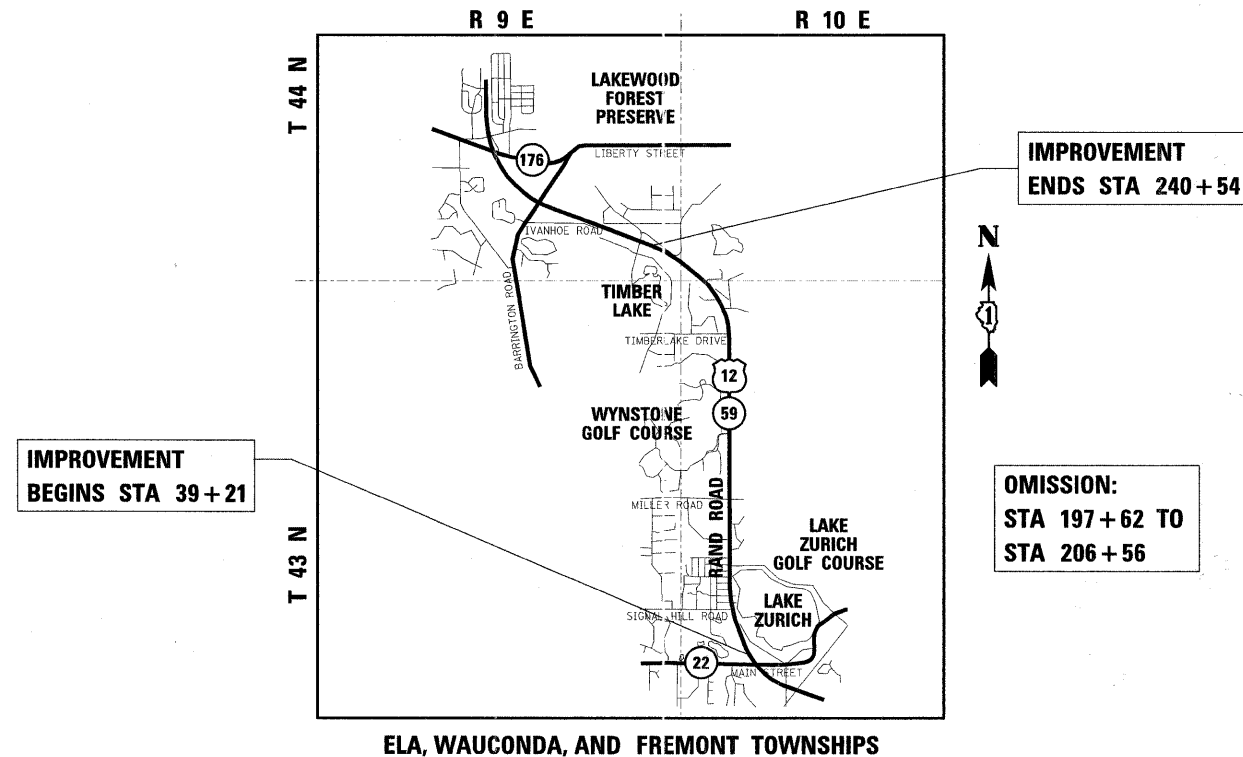
FOR INDEX OF SHEETS, SEE SHEET NO. 2

IMPROVEMENT LOCATED IN THE VILLAGES OF
LAKE ZURICH AND NORTH BARRINGTON

D-91-594-09



2007 ADT = 42,500 VEHICLES PER DAY
SPEED LIMIT = 50 MPH



FULL SIZE PLANS HAVE BEEN PREPARED USING STANDARD ENGINEERING SCALES. REDUCED SIZED PLANS WILL NOT CONFORM TO STANDARD SCALES. IN MAKING MEASUREMENTS ON REDUCED PLANS, THE ABOVE SCALES MAY BE USED.

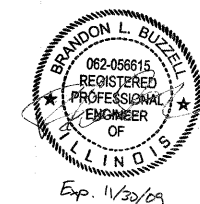
J.U.L.I.E.
JOINT UTILITY LOCATION INFORMATION FOR EXCAVATION
1-800-892-0123
OR 811

PROJECT ENGINEER: MICHELLE AQUINO (847) 705-4606
PROJECT MANAGER: LONG TRAN (847) 705-4232

CONTRACT NO. 60H24

GROSS LENGTH OF PROJECT = 20,133 FT = 3.81 MILES
NET LENGTH OF PROJECT = 19,039 FT = 3.61 MILES

LOCATION MAP
NOT TO SCALE



STATE OF ILLINOIS
DEPARTMENT OF TRANSPORTATION
DIVISION OF HIGHWAYS

SUBMITTED April 20 20 09
Dir. O'Neil
DEPUTY DIRECTOR OF HIGHWAYS, REGION ENGINEER

May 1, 20 09
Charles E. Ingersoll
ENGINEER OF DESIGN AND ENVIRONMENT

May 1, 20 09
Christine M. Reed
DIRECTOR OF HIGHWAYS, CHIEF ENGINEER

rjngroup
Excellence through Ownership
200 West Front Street
Wheaton, IL 60187

PRINTED BY THE AUTHORITY
OF THE STATE OF ILLINOIS