

F.A.U. RTE.	SECTION	COUNTY	TOTAL SHEETS	SHEET NO.
3902	16-Z-1-RS-1	KANE	18	1
FED. ROAD DIST. NO. 1	ILLINOIS	CONTRACT NO. 60H30		

STATE OF ILLINOIS  
DEPARTMENT OF TRANSPORTATION  
DIVISION OF HIGHWAYS

**PROPOSED  
HIGHWAY PLANS**

3902  
F.A.U. RTE. IL. RTE. 31 (LAKE STREET)  
SECTION: 16-Z-1-RS-1  
ARNOLD AVENUE TO NEW YORK STREET  
RESURFACING (3P)

KANE COUNTY  
C-91-600-09

AURORA TOWNSHIP  
R. 8 E.

FOR INDEX OF SHEETS, SEE SHEET NO. 2

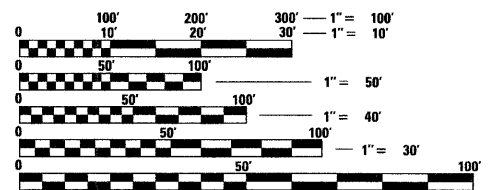
DESIGN DESIGNATION:  
SPEED LIMIT : 30 M.P.H.  
2007 ADT = 18,400

PROJECT LOCATED IN THE  
CITY OF AURORA

D-91-600-09



LOCATION OF SECTION INDICATED THUS: - - -



FULL SIZE PLANS HAVE BEEN PREPARED USING STANDARD ENGINEERING SCALES. REDUCED SIZED PLANS WILL NOT CONFORM TO STANDARD SCALES. IN MAKING MEASUREMENTS ON REDUCED PLANS, THE ABOVE SCALES MAY BE USED.

J.U.L.I.E.  
JOINT UTILITY LOCATING INFORMATION FOR EXCAVATORS  
1-800-892-0123

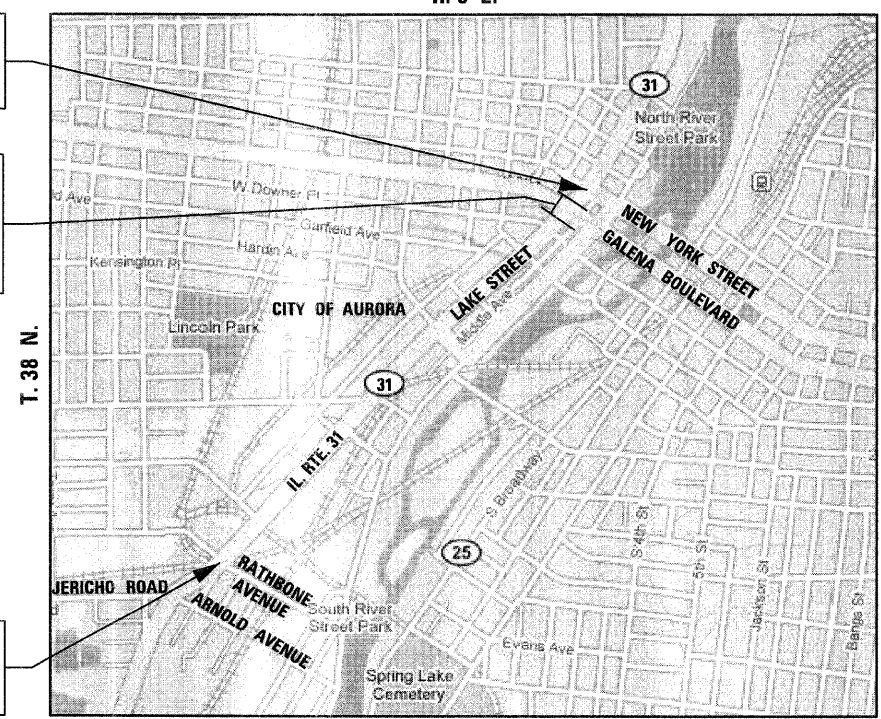
DISTRICT ONE - PLAN PREP ENGINEER:  
KEN ENG (847) 705-4247

CONTRACT NO. 60H30

PROJECT ENDS  
STA. 93 + 66

PAVING OMISSION  
STA. 89 + 05 TO  
STA. 90 + 86

PROJECT BEGINS  
STA. 18 + 30



GROSS LENGTH OF PROJECT = 7,536 FEET = 1.427 MILES  
NET LENGTH OF PROJECT = 7,355 FEET = 1.393 MILES



Birinder S. Sachdeva  
BIRINDER S. SACHDEVA, P.E.  
EXPIRES: 11-30-2009  
April 20, 2009  
DATE

STATE OF ILLINOIS  
DEPARTMENT OF TRANSPORTATION  
DIVISION OF HIGHWAYS

SUBMITTED APRIL 20, 2009  
Diana M. O'Keefe DEPUTY DIRECTOR OF HIGHWAYS, REGION ONE ENGINEER  
May 1, 2009  
Charles G. Ingersoll ENGINEER OF DESIGN AND ENVIRONMENT  
May 1, 2009  
Christine M. Reed DIRECTOR OF HIGHWAYS, CHIEF ENGINEER

PRINTED BY THE AUTHORITY  
OF THE STATE OF ILLINOIS

CHRISTIAN-ROGE & ASSOCIATES, INC.  
ENGINEERS - PLANNERS - SURVEYORS  
211 W. WACKER DRIVE CHICAGO, IL. 60606  
TELEPHONE: 312-372-2023