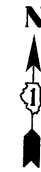
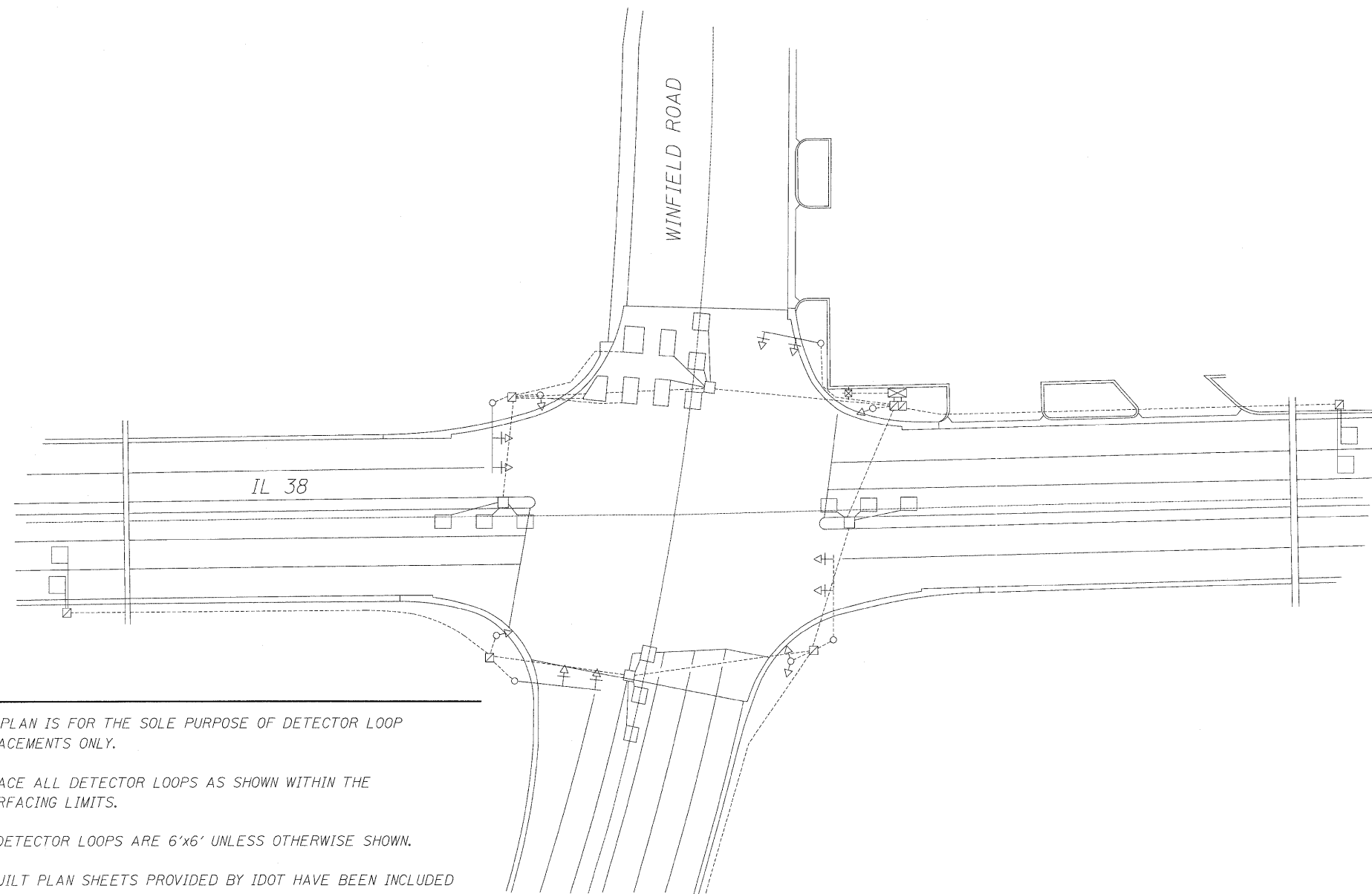


TRAFFIC SIGNAL LEGEND



	PROPOSED	EXISTING
DETECTOR LOOP		
SIGNAL HEAD		
G.S. CONDUIT IN TRENCH OR PUSHED		
SIGNAL HEAD WITH BACKPLATE		
RACEWAY FOR MAGNETIC DETECTOR, TYPE I OR II		
VEHICLE DETECTOR, NON-COMPENSATED MAGNETIC TYPE		



NOTES:

1. THIS PLAN IS FOR THE SOLE PURPOSE OF DETECTOR LOOP REPLACEMENTS ONLY.
2. REPLACE ALL DETECTOR LOOPS AS SHOWN WITHIN THE RESURFACING LIMITS.
3. ALL DETECTOR LOOPS ARE 6'x6' UNLESS OTHERWISE SHOWN.
4. AS-BUILT PLAN SHEETS PROVIDED BY IDOT HAVE BEEN INCLUDED FOR BIDDING PURPOSES ONLY, AND DO NOT NECESSARILY REFLECT ACTUAL FIELD CONDITIONS. PROPOSED DETECTOR LOOPS SHALL BE REPLACED AT ALL EXISTING LOCATIONS WITHIN THE PROJECT LIMITS, IN ACCORDANCE WITH STANDARD TS-07, SPECIAL PROVISIONS, AND AS DIRECTED BY THE ENGINEER.

THIS PLAN IS FOR THE SOLE PURPOSE OF DETECTOR LOOP REPLACEMENTS ONLY

REPLACE ALL DETECTOR LOOPS AS SHOWN (WITHIN THE RESURFACING LIMITS)

LONGO, INC.
CONSULTING ENGINEERS
1560 WALL STREET
NAPERVILLE, ILLINOIS 60563 PH (630) 577-9100

USER NAME = #USER#	DESIGNED - MJY	REVISED -
	DRAWN - ZDA	REVISED -
PLOT SCALE = #SCALE#	CHECKED - MJY	REVISED -
PLOT DATE = #DATE#	DATE - 04/22/2009	REVISED -

STATE OF ILLINOIS
DEPARTMENT OF TRANSPORTATION

DISTRICT ONE - DETECTOR LOOP REPLACEMENT
IL ROUTE 38 AT WINFIELD ROAD

SCALE: 1" = 50' SHEET NO. 11 OF 22 SHEETS STA. 13+00 TO STA. 150+00

F.A.P. RTE. 347	SECTION (G & Z) Y-RS-7	COUNTY DUPAGE	TOTAL SHEETS 22	SHEET NO. 11
C-91-601-09		CONTRACT NO. 60H31		
FED. ROAD DIST. NO. [ILLINOIS] FED. AID PROJECT				