

STATE OF ILLINOIS
DEPARTMENT OF TRANSPORTATION
DIVISION OF HIGHWAYS

**PROPOSED
HIGHWAY PLANS**

FAU ROUTE 2937: ILL 83 (TORRENCE AVE)
186TH STREET TO GLENWOOD-DYER ROAD

SECTION: 3077-RS

RESURFACING (3P)

COOK COUNTY

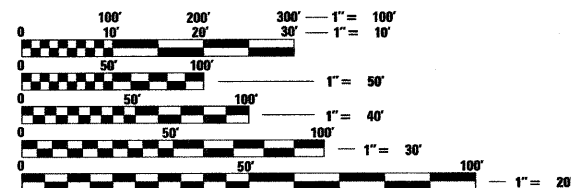
C-91-606-09

F.A.U. RTE.	SECTION	COUNTY	TOTAL SHEETS	SHEET NO.
2937	3077-RS	COOK	24	1
FED. ROAD DIST. NO. 1		ILLINOIS	CONTRACT NO. 60H36	

FOR INDEX OF SHEETS, SEE SHEET NO. 2

IMPROVEMENT LOCATED IN THE
VILLAGES OF LANSING AND LYNWOOD

2007 ADT = 13,900 VEHICLES PER DAY
SPEED LIMIT = 40 MPH

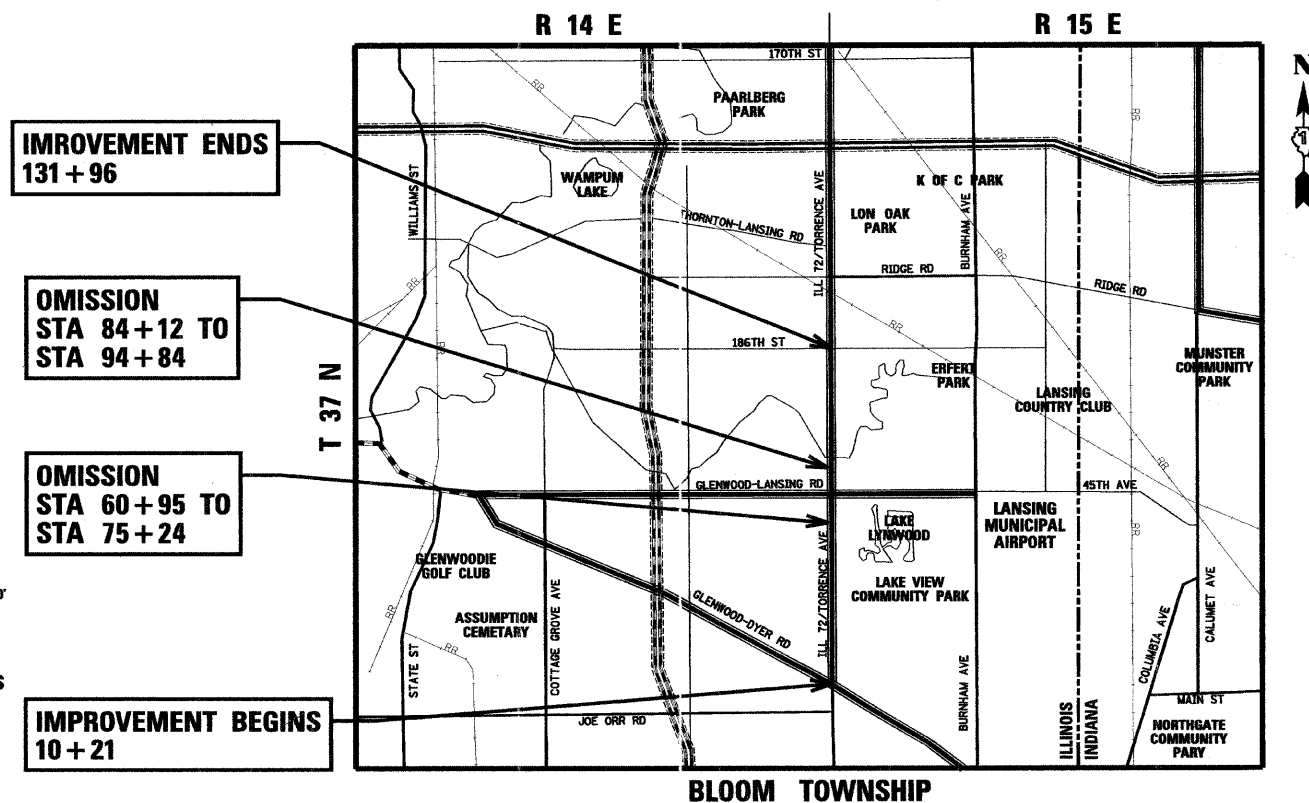


FULL SIZE PLANS HAVE BEEN PREPARED USING STANDARD ENGINEERING SCALES. REDUCED SIZED PLANS WILL NOT CONFORM TO STANDARD SCALES. IN MAKING MEASUREMENTS ON REDUCED PLANS, THE ABOVE SCALES MAY BE USED.

J.U.L.I.E.
JOINT UTILITY LOCATION INFORMATION FOR EXCAVATION
1-800-892-0123
OR 811

PROJECT ENGINEER: MICHELLE AQUINO (847) 705-4606
PROJECT MANAGER: LONG TRAN (847) 705-4232

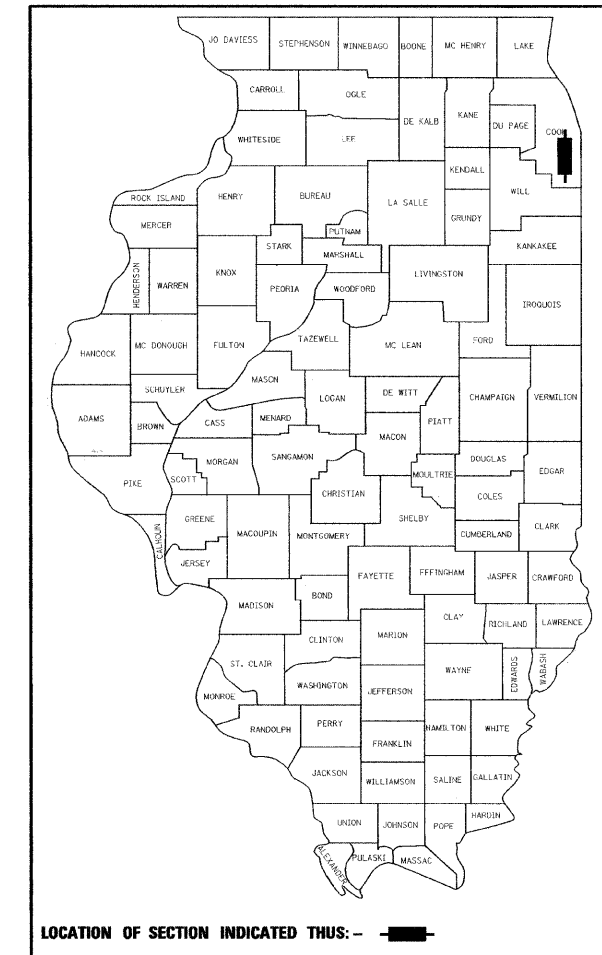
CONTRACT NO. 60H36



GROSS LENGTH OF PROJECT = 12175 FT. = 2.31 MILES
NET LENGTH OF PROJECT = 9674 FT. = 1.83 MILES

LOCATION MAP
NOT TO SCALE

D-91-606-09



STATE OF ILLINOIS
DEPARTMENT OF TRANSPORTATION
DIVISION OF HIGHWAYS

SUBMITTED APRIL 20, 2009

Diana M. O'Keefe DE
DEPUTY DIRECTOR OF HIGHWAYS, REGION ENGINEER

May 1, 2009
Charles J. Ingersoll EIT
ENGINEER OF DESIGN AND ENVIRONMENT

May 1, 2009
Christine M. Reed EIT
DIRECTOR OF HIGHWAYS, CHIEF ENGINEER

rjngroup
Excellence through Ownership

200 West Front Street
Wheaton, IL 60187

PRINTED BY THE AUTHORITY
OF THE STATE OF ILLINOIS