

F.A.P. RTE.	SECTION	COUNTY	TOTAL SHEETS	SHEET NO.
373	2009-053 RS	COOK	20	1
FED. ROAD DIST. NO. 1		ILLINOIS	CONTRACT NO. 60H41	

STATE OF ILLINOIS
DEPARTMENT OF TRANSPORTATION
DIVISION OF HIGHWAYS

**PROPOSED
HIGHWAY PLANS**

F.A.P. RTE. 373 IL. RTE. 171 (FIRST AVENUE & ARCHER AVENUE)
SECTION: 2009-053 RS
I-55 (STEVENSON EXPRESSWAY) TO IL. RTE. 43 (HARLEM AVENUE)
RESURFACING (3P)

COOK COUNTY
C-91-611-09

LYONS TOWNSHIP
R. 12 E.

R. 13 E.

FOR INDEX OF SHEETS, SEE SHEET NO. 2

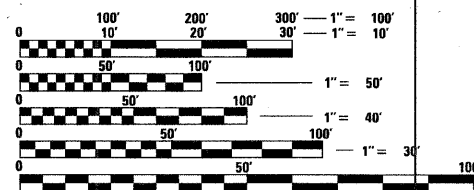
DESIGN DESIGNATION:
SPEED LIMIT : 30 M.P.H. TO 50 M.P.H.
2007 ADT = 42,700

PROJECT LOCATED IN THE
VILLAGE OF SUMMIT

D-91-611-09



LOCATION OF SECTION INDICATED THUS: - [black rectangle] -



FULL SIZE PLANS HAVE BEEN PREPARED USING STANDARD
ENGINEERING SCALES. REDUCED SIZED PLANS WILL NOT
CONFORM TO STANDARD SCALES. IN MAKING MEASUREMENTS
ON REDUCED PLANS, THE ABOVE SCALES MAY BE USED.

J.U.L.I.E.
JOINT UTILITY LOCATING INFORMATION FOR EXCAVATORS
1-800-892-0123

DISTRICT ONE - PLAN PREP ENGINEER:
KEN ENG (847) 705-4247

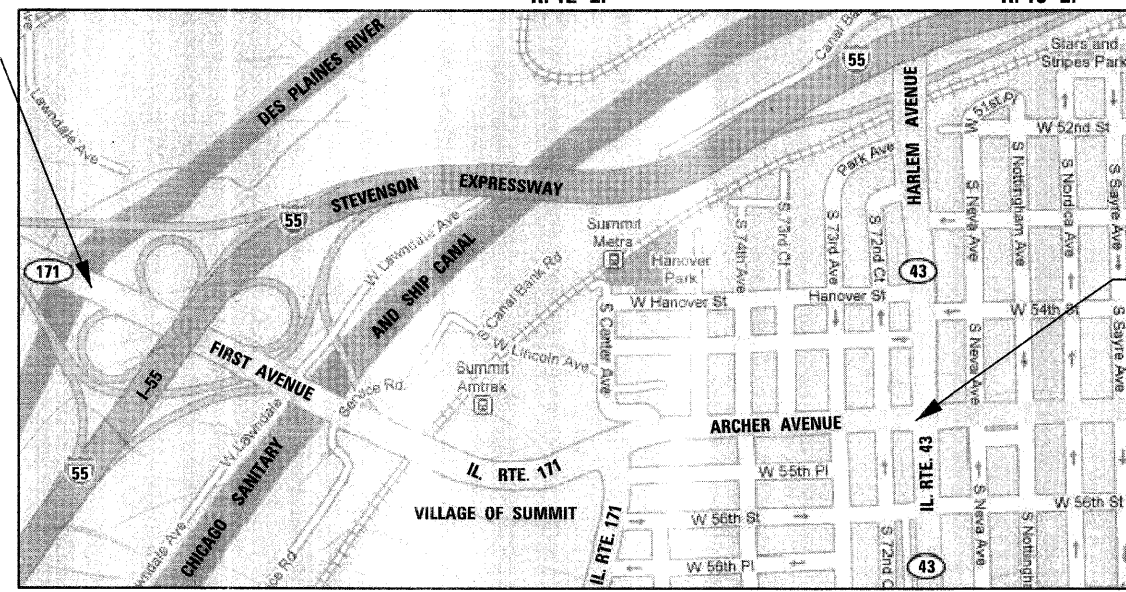
CONTRACT NO. 60H41

PROJECT BEGINS
STA. 12 + 44

PAVING OMISSION
STA. 16 + 91 TO
STA. 20 + 41

PAVING OMISSION
STA. 24 + 46 TO
STA. 32 + 65

PAVING OMISSION
STA. 36 + 20 TO
STA. 38 + 68



GROSS LENGTH OF PROJECT = 6,275 FEET = 1.188 MILES
NET LENGTH OF PROJECT = 4,858 FEET = 0.920 MILES

PROJECT
ENDS
STA. 75 + 19

STATE OF ILLINOIS
DEPARTMENT OF TRANSPORTATION
DIVISION OF HIGHWAYS

SUBMITTED APRIL 20, 2009

Diana M. O'Keefe or
DEPUTY DIRECTOR OF HIGHWAYS, REGION ONE ENGINEER

May 1, 2009
Charles S. Ingersoll
ENGINEER OF DESIGN AND ENVIRONMENT

May 1, 2009
Christine M. Reed
DIRECTOR OF HIGHWAYS, CHIEF ENGINEER



Birinder S. Sachdeva April 20, 2009
BIRINDER S. SACHDEVA, P.E. DATE
EXPIRES: 11-30-2009

CHRISTIAN-ROGE & ASSOCIATES, INC.
ENGINEERS - PLANNERS - SURVEYORS
211 W. WACKER DRIVE CHICAGO, IL. 60606
TELEPHONE: 312-372-2023

**PRINTED BY THE AUTHORITY
OF THE STATE OF ILLINOIS**