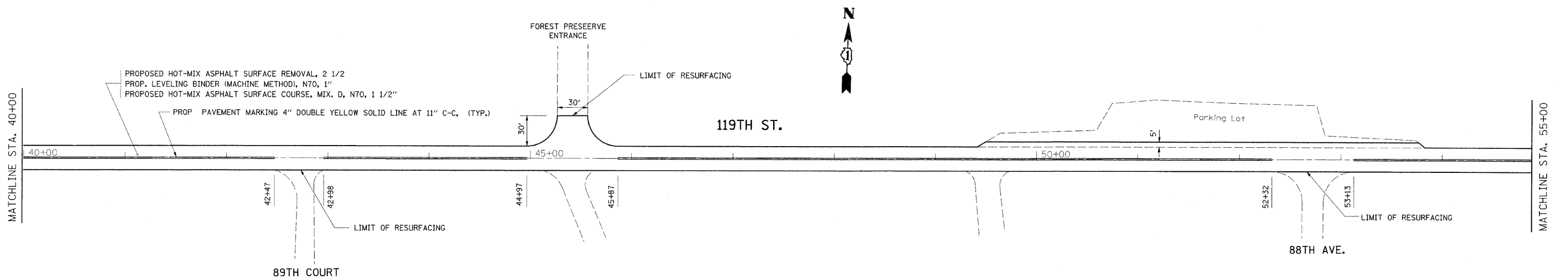
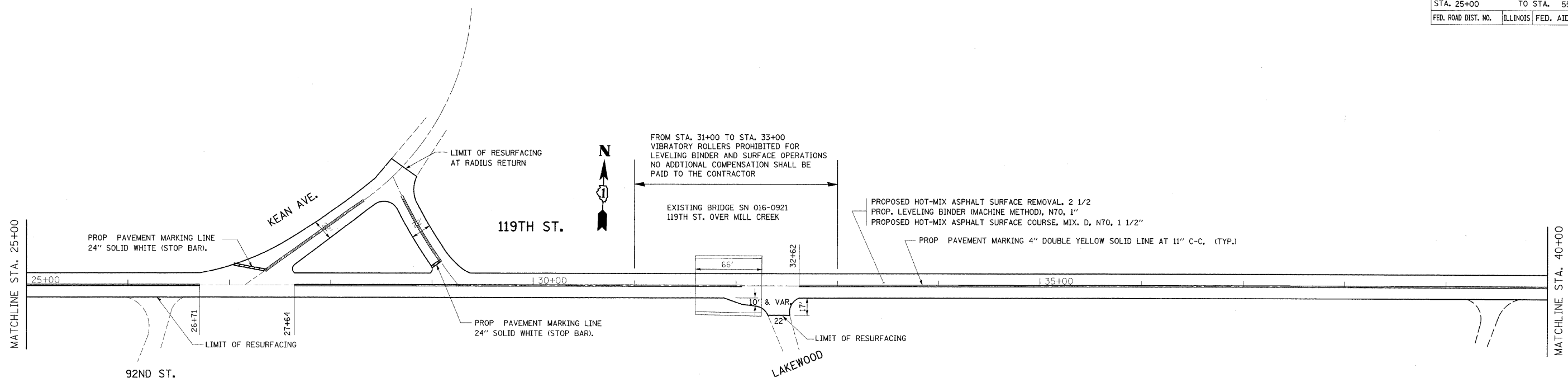


O.R.	SECTION	COUNTY	TOTAL SHEETS	SHEET NO.
213	0102 RS-7	COOK	18	6
STA. 25+00		TO STA. 55+00		
FED. ROAD DIST. NO.		ILLINOIS FED. AID PROJECT		



NOTES:

PERMANENT PAVEMENT MARKINGS SHALL BE THERMOPLASTIC (OF THE EXTRUDED TYPE) CONFORMING TO IDOT STANDARD SPECIFICATIONS. PERMANENT PAVEMENT MARKINGS SHALL BE PLACED IN ACCORDANCE WITH THE "DISTRICT ONE TYPICAL PAVEMENT MARKINGS" DETAIL (TC-13)

RAISED REFLECTIVE PAVEMENT MARKERS SHALL BE IN ACCORDANCE WITH THE DISTRICT ONE "TYPICAL APPLICATION RAISED REFLECTIVE PAVEMENT MARKERS DETAIL"

THE RESIDENT ENGINEER SHOULD CONTACT MS. PATRICE HARRIS, AREA TRAFFIC ENGINEER AT (708) 597-9800 PRIOR TO PLACING ANY PERMANENT PAVEMENT MARKINGS.

REVISIONS	
NAME	DATE

ILLINOIS DEPARTMENT OF TRANSPORTATION

119th STREET
PROPOSED ROADWAY AND
PAVEMENT MARKING PLAN

SCALE: VERT. 1" = 50'
HORIZ. DATE 4/10/2009

DRAWN BY SES
CHECKED BY