

**STATE OF ILLINOIS**  
**DEPARTMENT OF TRANSPORTATION**  
**DIVISION OF HIGHWAYS**  
**PROPOSED**  
**HIGHWAY PLANS**

**F.A.P. 303 (IL 173)**  
**SECTION (132, 133 & 134) RS-5**  
**ALDEN ROAD TO US 12**  
**RESURFACING (3P)**

**MCHENRY COUNTY**  
**C-91-254-02**

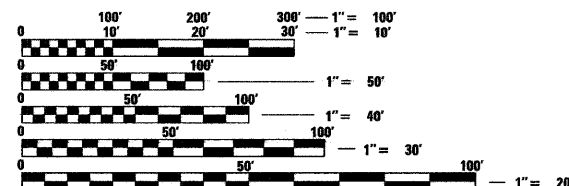
F.A.P. RTE.	SECTION	COUNTY	TOTAL SHEETS	SHEET NO.
303	(132, 133 & 134) RS-5	MCHENRY	36	1
FED. ROAD DIST. NO. 1	ILLINOIS	CONTRACT NO.	62496	

FOR INDEX OF SHEETS, SEE SHEET NO. 2

THESE IMPROVEMENTS ARE LOCATED WITHIN THE VILLAGES OF RICHMOND AND HEBRON

**TRAFFIC DATA**

2007 ADT - 4,700  
 POSTED SPEED LIMIT - 55 MPH

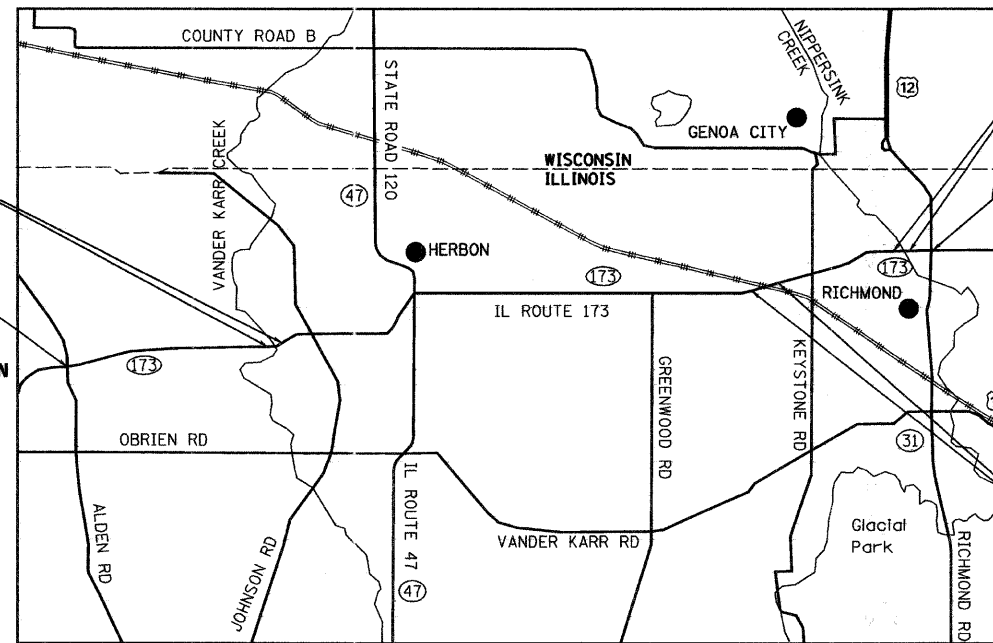


FULL SIZE PLANS HAVE BEEN PREPARED USING STANDARD ENGINEERING SCALES. REDUCED SIZED PLANS WILL NOT CONFORM TO STANDARD SCALES. IN MAKING MEASUREMENTS ON REDUCED PLANS, THE ABOVE SCALES MAY BE USED.

J.U.L.I.E.  
 JOINT UTILITY LOCATION INFORMATION FOR EXCAVATION  
 1-800-892-0123  
 OR 811

STA. 242 + 91  
 OMISSION  
 STA. 243 + 68

BEGIN PROJECT  
 STA. 105 + 18



STA. 680 + 63  
 OMISSION  
 STA. 682 + 17

END PROJECT  
 STA. 697 + 96

STA. 585 + 51  
 OMISSION  
 STA. 586 + 30

RICHMOND, HEBRON AND ALDEN TOWNSHIP

LOCATION MAP  
 1" = 6000'

GROSS LENGTH OF PROJECT = 59,278 FT = 11.23 MI.  
 NET LENGTH OF PROJECT = 58,968 FT = 11.17 MI.

**Giorba Group, Inc.**  
 DESIGN FIRM  
 REGISTRATION NUMBER  
 184-001016  
 CONSULTING ENGINEERS  
 SUITE 402, 5507 NORTH CUMBERLAND AVE  
 CHICAGO, ILLINOIS 60656 :: (773) 775-4009



DATE: 4/13/2009  
 SEAL EXPIRES: 11/30/2009



STATE OF ILLINOIS  
 DEPARTMENT OF TRANSPORTATION  
 DIVISION OF HIGHWAYS

SUBMITTED APRIL 14, 2009

*Debra M. O'Keefe*  
 DEPUTY DIRECTOR OF HIGHWAYS, REGION ENGINEER

May 1, 2009  
*Charles J. Ingersoll*  
 ENGINEER OF DESIGN AND ENVIRONMENT

May 1, 2009  
*Christine M. Reed*  
 DIRECTOR OF HIGHWAYS, CHIEF ENGINEER

**PRINTED BY THE AUTHORITY  
 OF THE STATE OF ILLINOIS**

DISTRICT 1 DESIGN PLAN PREPARATION ENGINEER: K. ENG (847)705-4247

CONTRACT NO. 62496