

F.A.P. RTE.	SECTION	COUNTY	TOTAL SHEETS	SHEET NO.
531	2004-044 RS	WILL	76	1
		ILLINOIS	CONTRACT NO. 62659	

STATE OF ILLINOIS
DEPARTMENT OF TRANSPORTATION
DIVISION OF HIGHWAYS

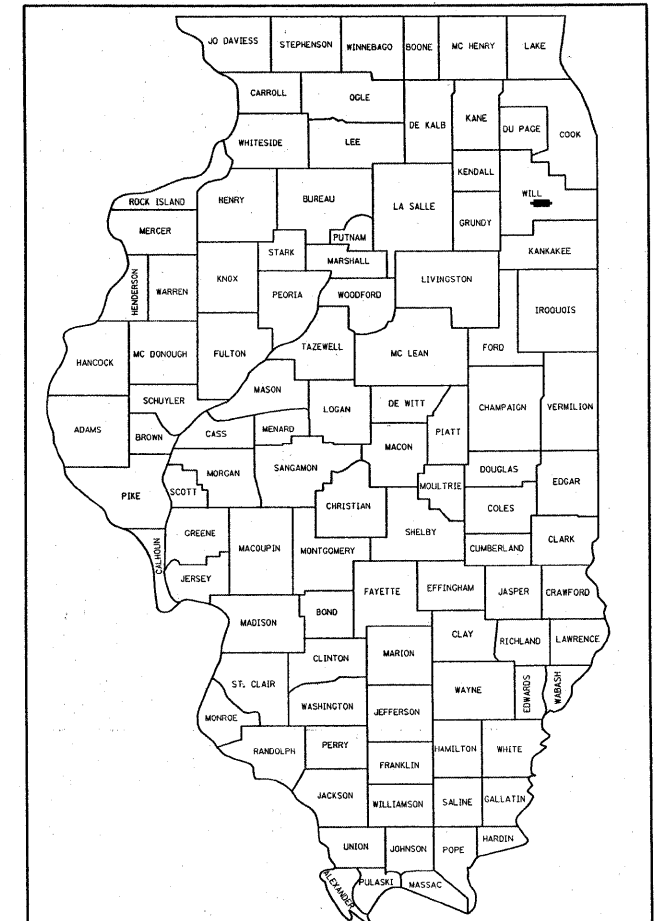
**PROPOSED
HIGHWAY PLANS**

F.A.P. ROUTE 531: MANHATTAN-MONEE RD
CEDAR RD TO SCHOOL HOUSE RD
SECTION: 2004-044RS
RESURFACING
WILL COUNTY
C-91-020-04

FOR INDEX OF SHEETS, SEE SHEET NO. 2

IMPROVEMENT LOCATED IN UNINCORPORATED MANHATTAN TOWNSHIP

D-91-020-04

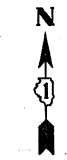
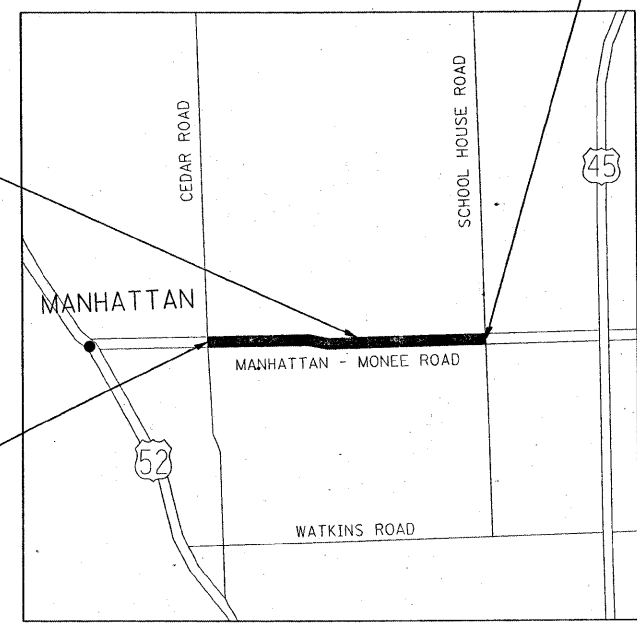


LOCATION OF SECTION INDICATED THUS: - ■ -

STRUCTURE DATA:
MANHATTAN-MONEE ROAD OVER
PRAIRIE CREEK TRIBUTARY
STRUCTURE NO. 099-0194

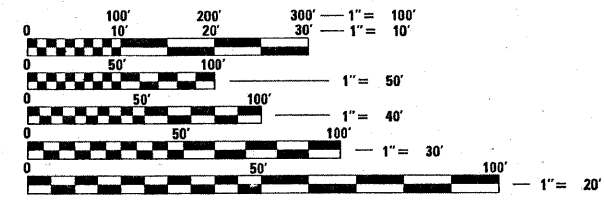
IMPROVEMENT BEGINS:
STATION 68+03.76

IMPROVEMENT ENDS:
STATION 178+32.00



TRAFFIC DATA

2008 ADT = 7,000
POSTED SPEED LIMIT: 45 MPH



FULL SIZE PLANS HAVE BEEN PREPARED USING STANDARD ENGINEERING SCALES. REDUCED SIZED PLANS WILL NOT CONFORM TO STANDARD SCALES. IN MAKING MEASUREMENTS ON REDUCED PLANS, THE ABOVE SCALES MAY BE USED.

J.U.L.I.E.
JOINT UTILITY LOCATION INFORMATION FOR EXCAVATION
1-800-892-0123
OR 811

STATE OF ILLINOIS
DEPARTMENT OF TRANSPORTATION
DIVISION OF HIGHWAYS

SUBMITTED APRIL 14, 2009

Diana M. O'Keefe *as*
DEPUTY DIRECTOR OF HIGHWAYS, REGION ENGINEER

May 1, 2009
Charles S. Ingersoll
ENGINEER OF DESIGN AND ENVIRONMENT

May 1, 2009
Christine M. Reed
DIRECTOR OF HIGHWAYS, CHIEF ENGINEER

PROJECT ENGINEER: JENPAI CHANG - (847) 705-4432
PROJECT MANAGER: KEN ENG - (847) 705-4247

GROSS & NET LENGTH OF IMPROVEMENT = 11,029 FEET = 2.09 MILES

**PRINTED BY THE AUTHORITY
OF THE STATE OF ILLINOIS**

CONTRACT NO. 62659