

F.A.U. RTE.	SECTION	COUNTY	TOTAL SHEETS	SHEET NO.
316	(10&1-D-2)RS-4	WILL	36	1
FED. ROAD DIST. NO. 1	ILLINOIS	CONTRACT NO. 62778		

**STATE OF ILLINOIS
DEPARTMENT OF TRANSPORTATION
DIVISION OF HIGHWAYS**

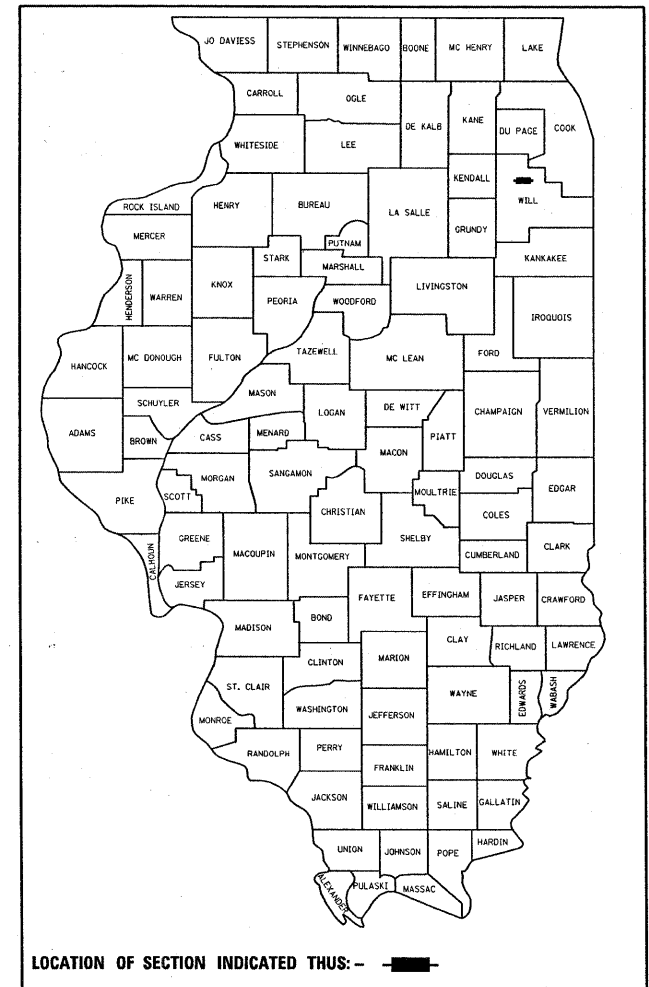
FOR INDEX OF SHEETS, SEE SHEET NO. 2

PROJECT IS LOCATED IN
THE CITY OF JOLIET

**PROPOSED
HIGHWAY PLANS**

**FAU ROUTE 316: CENTER ST.
WORTMAN DR. TO PLEASANT ST.
SECTION (10 & 1-D-2) RS-4
RESURFACING (3 P) & BRIDGE JOINT REPAIR**

D-91-245-04



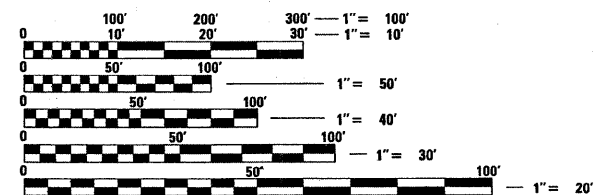
WILL COUNTY

C-91-245-04

1. SN: 099-0186

2. SN: 099-0187

3. SN: 099-0188



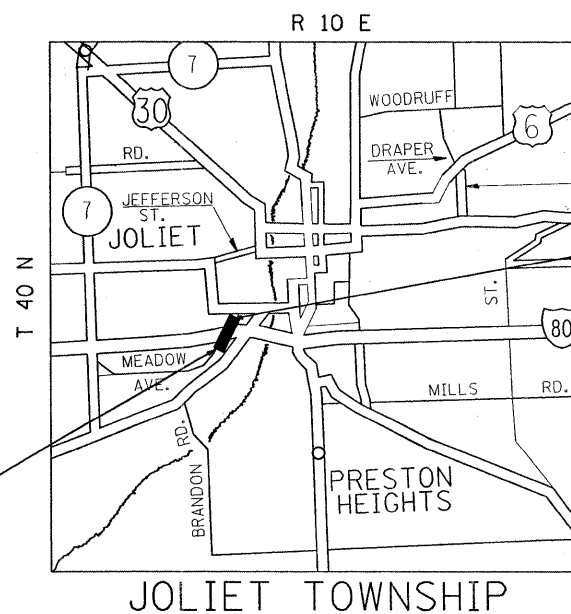
FULL SIZE PLANS HAVE BEEN PREPARED USING STANDARD ENGINEERING SCALES. REDUCED SIZED PLANS WILL NOT CONFORM TO STANDARD SCALES. IN MAKING MEASUREMENTS ON REDUCED PLANS, THE ABOVE SCALES MAY BE USED.

J.U.L.I.E.
JOINT UTILITY LOCATION INFORMATION FOR EXCAVATION
1-800-892-0123
OR 811

OMISSION ON RAMP BA BETWEEN
STA. 64+61 TO 70+22

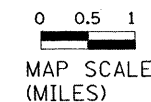
OMISSION ON RAMP DB BETWEEN
STA. 29+31 TO 30+45

PROJECT BEGINS STA. 53+00



PROJECT ENDS STA. 91+30

TRAFFIC DATA
SPEED LIMIT: 35 MPH
2004 ADT: 11,200



PROJECT ENGINEER: JENPAI CHANG (847) 705-4432
PROJECT MANAGER: KEN ENG

CONTRACT NO. 62778

NET LENGTH ALONG RAMP = 11,718 LINEAL FEET = 2.219 MILES
GROSS LENGTH OF PROJECT = 3830 LINEAL FEET = 0.725 MILES
NET LENGTH OF PROJECT = 3269 LINEAL FEET = 0.619 MILES

**STATE OF ILLINOIS
DEPARTMENT OF TRANSPORTATION
DIVISION OF HIGHWAYS**

SUBMITTED MARCH 20, 2009

Diana M. O'Keefe
DEPUTY DIRECTOR OF HIGHWAYS, REGION ENGINEER

May 1, 2009
Charles G. Ingersoll
ENGINEER OF DESIGN AND ENVIRONMENT

May 1, 2009
Christine M. Reed
DIRECTOR OF HIGHWAYS, CHIEF ENGINEER

**PRINTED BY THE AUTHORITY
OF THE STATE OF ILLINOIS**