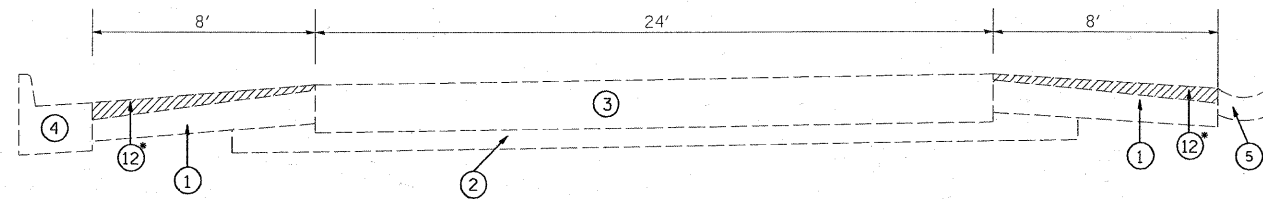
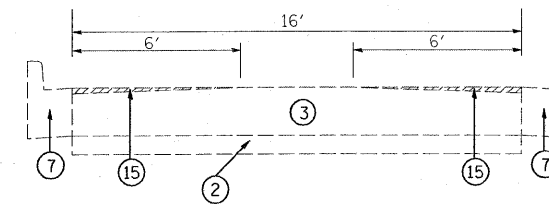


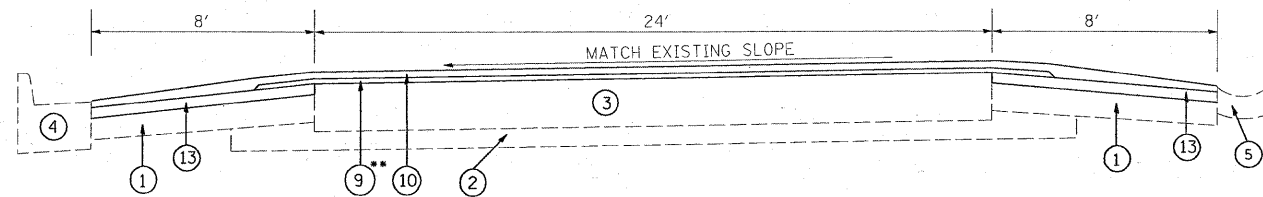
LEGEND



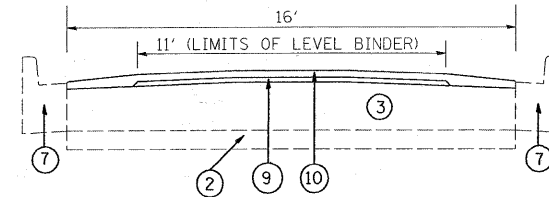
EXISTING TYPICAL SECTION
RAMP AB STA. 27+22 TO 32+00 (LOOKING NORTH)
RAMP AB STA. 24+15 TO 27+22 (LOOKING SOUTH)



EXISTING TYPICAL SECTION
RAMP AB STA 33+00 TO 30+45

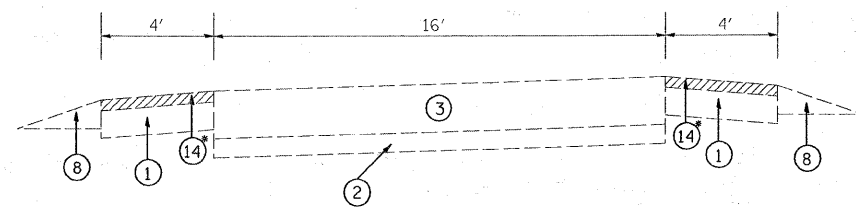


PROPOSED TYPICAL SECTION
RAMP AB STA. 27+22 TO 32+00 (LOOKING NORTH)
RAMP AB STA. 24+15 TO 27+22 (LOOKING SOUTH)

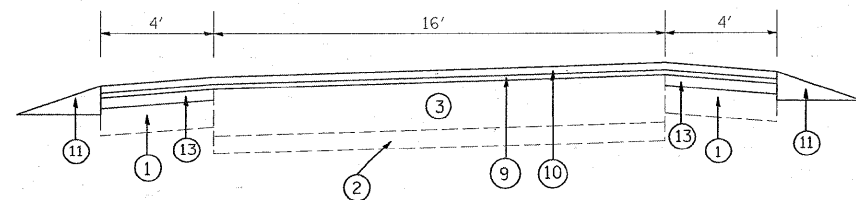


PROPOSED TYPICAL SECTION
RAMP AB STA 33+00 TO 30+45

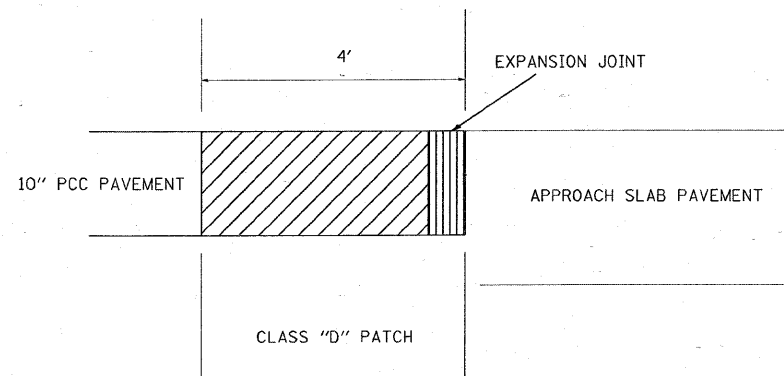
- ① EXISTING STABILIZED SHOULDERS
- ② EXISTING SUB-BASE 4"
- ③ EXISTING 10" PCC PAVEMENT
- ④ EXISTING COMBINATION CONCRETE CURB & GUTTER, TYPE B-6.24
- ⑤ EXISTING TYPE B GUTTER
- ⑥ EXISTING RAISED MEDIAN
- ⑦ EXISTING COMBINATION CONCRETE CURB & GUTTER, TYPE B-6.12
- ⑧ EXISTING AGGREGATE SHOULDER
- ⑨ PROPOSED POLYMERIZED LEVELING BINDER (MACHINE METHOD), IL-4.75, N50, (1")
- ⑩ PROPOSED HOT MIX ASPHALT SURFACE COURSE, MIX "D" N70, (1 1/2")
- ⑪ PROPOSED AGGREGATE SHOULDER, TYPE B
- ⑫ PROPOSED HOT MIX ASPHALT SURFACE REMOVAL, (VARIABLE DEPTH)
- ⑬ PROPOSED HOT MIX ASPHALT BINDER COURSE, IL-19.0, N70 (2 1/4")
- ⑭ PROPOSED HOT MIX ASPHALT SURFACE REMOVAL 2 1/4"
- ⑮ PROPOSED PORTLAND CEMENT CONCRETE SURFACE REMOVAL (VAR. DEPTH)
- ⑯ PROPOSED MEDIAN REMOVAL PARTIAL DEPTH



EXISTING TYPICAL SECTION
RAMP BA STA 60+73 TO 64+61
RAMP BA STA 70+22 TO 73+00



PROPOSED TYPICAL SECTION
RAMP BA STA 60+73 TO 64+61
RAMP BA STA 70+22 TO 73+00



CLASS "D" PATCHES FOR EXPANSION JOINT REMOVAL.

Remove expansion joints at bridge approach pavement locations for Structure 5 (SN: 099-0188) (Northbound Center St. bridge over I-80) and place CLASS "D" PATCHES 10". The removal of expansion joints and placement of CLASS "D" PATCHES 10" will be paid for with the pay item Class "D" Patches 10".

FILE NAME =	USER NAME = aqeelff	DESIGNED -	REVISED -	STATE OF ILLINOIS DEPARTMENT OF TRANSPORTATION	RAMP AB/RAMP BA TYPICAL SECTIONS			F.A.J. RTE.	SECTION	COUNTY	TOTAL SHEETS	SHEET NO.
os:\pwork\pwidot\AQEELFF\d0120663\012	504-design.dgn	DRAWN -	REVISED -					316	(10 & 1 D-2) RS-4	WILL	36	5
PLOT SCALE = 50,000' / IN.		CHECKED -	REVISED -		CONTRACT NO. 62778			FED. ROAD DIST. NO. 1 ILLINOIS FED. AID PROJECT				
PLOT DATE = 3/24/2009		DATE -	REVISED -		SCALE: NTS	SHEET NO. 2 OF 5 SHEETS	STA. X					