

STATE OF ILLINOIS
DEPARTMENT OF TRANSPORTATION
DIVISION OF HIGHWAYS

PROPOSED
HIGHWAY PLANS

FAP ROUTE 315 (US 136)
SECTION 109RS-4, 110RS-2

TYPE OF IMPROVEMENT 3P
FULTON COUNTY
C-94-026-03

F.A.P. RTE.	SECTION	COUNTY	TOTAL SHEETS	SHEET NO.
315	109RS-4, 110RS-2	FULTON	98	1
		ILLINOIS	CONTRACT NO. 68330	

* 98+2 = 100

FOR INDEX OF SHEETS, SEE SHEET NO. 2

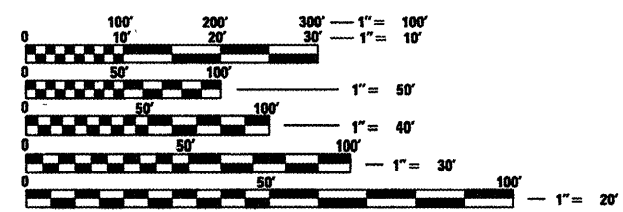
HIGHWAY STANDARDS

- 280001-04
- 285001-02
- 442101-07
- 482001-02
- 542401-01
- 542501-02
- 635006-03
- 635011-02
- 666001-01
- 667101-01
- 780001-02
- 701001-02
- 701006-03
- 701201-03
- 701301-03
- 701306-02
- 701311-03
- 701901-01

701326-04

DESIGN DESIGNATION

OTHER PRINCIPAL ARTERIAL
 CLASS 2 TRUCK ROUTE
 ADT = 2089 (2006)
 MU = 258
 SU = 146

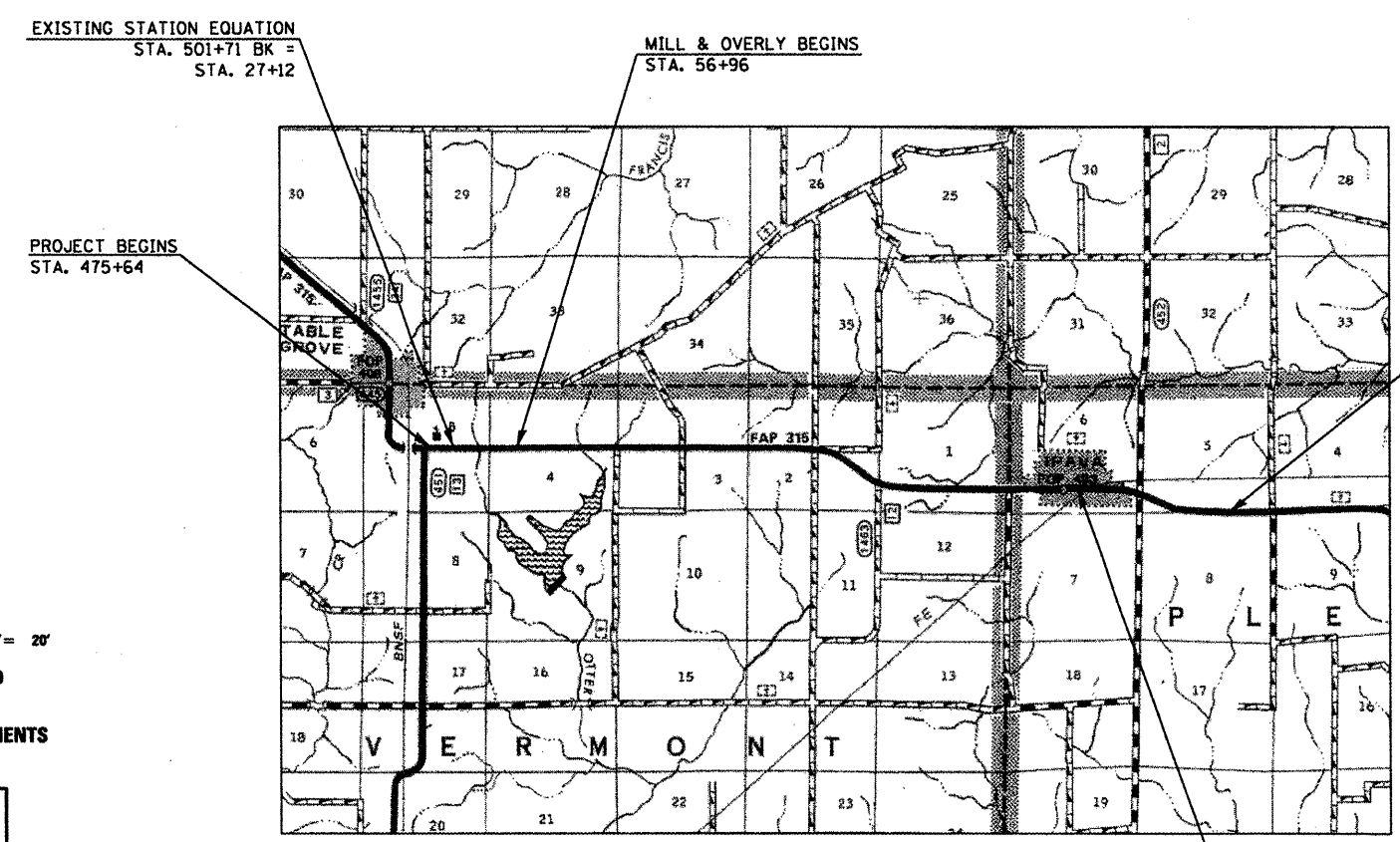


FULL SIZE PLANS HAVE BEEN PREPARED USING STANDARD ENGINEERING SCALES. REDUCED SIZED PLANS WILL NOT CONFORM TO STANDARD SCALES. IN MAKING MEASUREMENTS ON REDUCED PLANS, THE ABOVE SCALES MAY BE USED.

J.U.L.I.E.
 JOINT UTILITY LOCATION INFORMATION FOR EXCAVATION
 1-800-892-0123
 OR 811

PROJECT TEAM- DISTRICT 4 /SQUAD 6
PROJECT MANAGER- RICH DOTSON

CONTRACT NO. 68330



PROJECT ENDS
 NEW STA. EQUATION
 STA. 504+48 BK =
 STA. 502+51

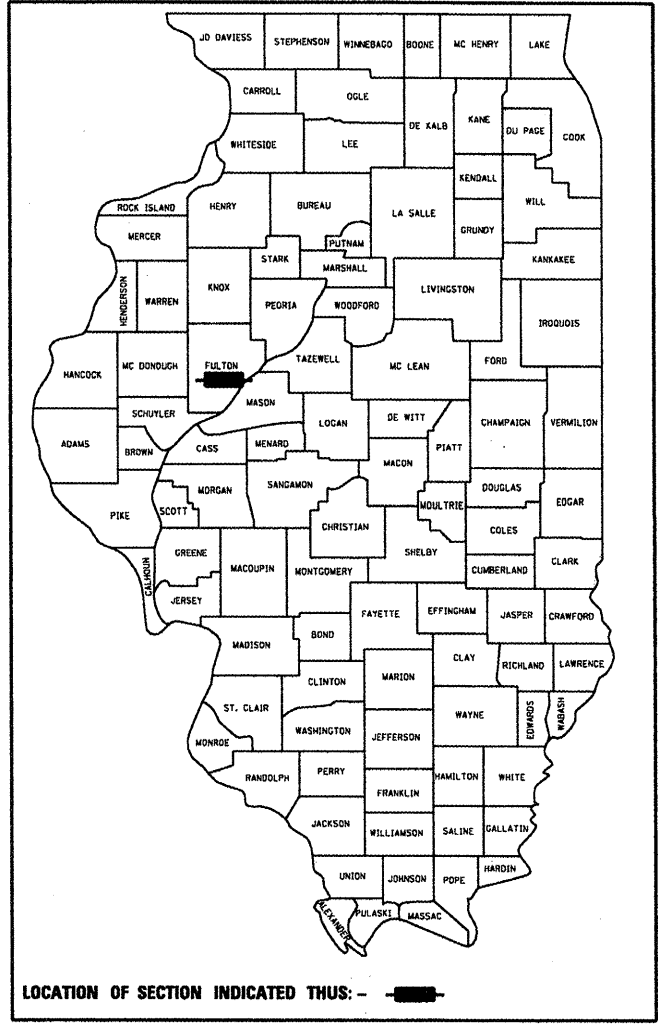
QC/OA BITUMINOUS

NPDES PERMIT REQUIRED

RAILROAD OMISSION
 STA. 282+31 TO 282+41

GROSS LENGTH = 50,239.3 FT. = 9.52 MILE
 NET LENGTH = 50,239.3 FT. = 9.52 MILE

D-94-024-03



LOCATION OF SECTION INDICATED THIS: - [Black Box] -

DESCRIPTION OF WORK

THIS PROJECT CONSISTS OF CLASS D PATCHING, HMA SURFACE REMOVAL, HMA RESURFACING, AND OTHER RELATED WORK. FOR ONE MILE THERE WILL BE CULVERT EXTENSIONS, MINOR DITCH WORK AND WIDENING FOR HMA SHOULDERS.

STATE OF ILLINOIS
 DEPARTMENT OF TRANSPORTATION
 DIVISION OF HIGHWAYS

SUBMITTED *Aluc* 20 09

May 1, 20 09
 DEPUTY DIRECTOR OF HIGHWAYS, REGION ENGINEER

Charles J. Ingewell /RD
 ENGINEER OF DESIGN AND ENVIRONMENT

May 1, 20 09
Christine M. Reed /RD
 DIRECTOR OF HIGHWAYS, CHIEF ENGINEER

**PRINTED BY THE AUTHORITY
 OF THE STATE OF ILLINOIS**