

**Illinois Department of Transportation
District 4
Control Monument Diagram**

STATION NAME: 95-6011 FU DATE: 6/27/95
 ORDER OF ACCURACY: ORDER C 2-II HORIZONTAL (FGCS)
 STATION ELLIPSOID HEIGHT: 177.682 m

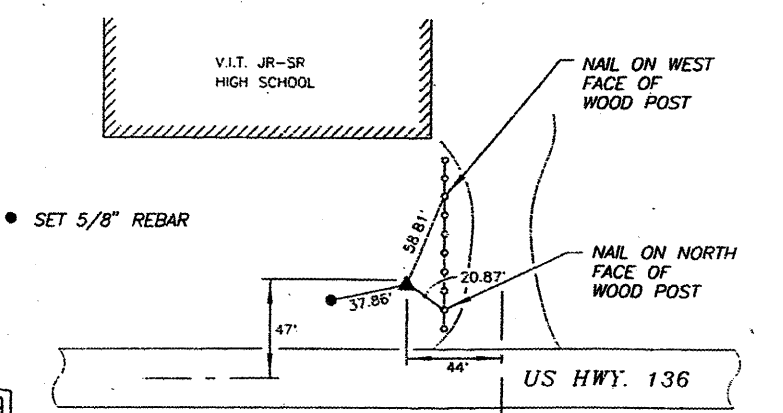
COMPANION STATION: 6111 STATION ELLIPSOID HEIGHT: 180.309 m
 DESCRIPTION: BERNSTEN 3D TOP SECURITY GPS MONUMENT.

WGS 84 LATITUDE: 40°21'24.733446" (N) LONGITUDE: 90°25'05.999932" (W)
 DATUM: 1983 ILLINOIS STATE PLANE TRANSVERSE MERCATOR, WEST ZONE
 NORTH: 409642.0667 EAST: 678622.7553

FROM STATION TO:	GRID DISTANCE	AZIMUTH
6011 to 6111	531.981 m	270°02'46"

STATION DESCRIPTION: BERNSTEN 3D TOP SECURITY GPS MONUMENT. CONSISTING OF A 9/16" DIA. STAINLESS STEEL DATUM POINT ON THREADED 9/16" x 4' LONG ROD TOTALING (8') IN LENGTH WITH GREASED TOP SECURITY SLEEVE ENCLOSED IN SAND AND 6" PVC PIPE WITH BMAC 6 ALUMINUM ACCESS COVER.

TO REACH THE STATION FROM... THE INTERSECTION OF US HWY. 24 AND US HWY. 136, PROCEED WEST ON HWY. 136, 12.6 MILES TO THE STATION ON THE RIGHT.



AMERICAN SURVEYING CONSULTANTS, P.C.

**Illinois Department of Transportation
District 4
Control Monument Diagram**

STATION NAME: 95-6111 FU DATE: 6/27/95
 ORDER OF ACCURACY: ORDER C 2-II HORIZONTAL (FGCS)
 STATION ELLIPSOID HEIGHT: 180.309 m

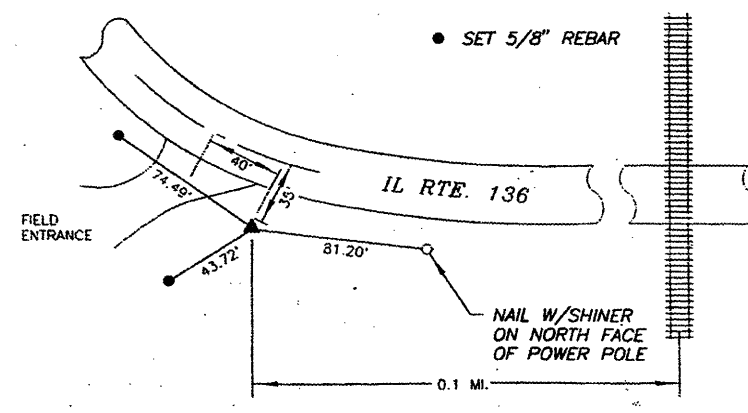
COMPANION STATION: 6011 STATION ELLIPSOID HEIGHT: 177.682 m
 DESCRIPTION: BERNSTEN 3D TOP SECURITY GPS MONUMENT.

WGS 84 LATITUDE: 40°21'24.697689" (N) LONGITUDE: 90°25'28.545900" (W)
 DATUM: 1983 ILLINOIS STATE PLANE TRANSVERSE MERCATOR, WEST ZONE
 NORTH: 409642.4958 EAST: 678090.7750

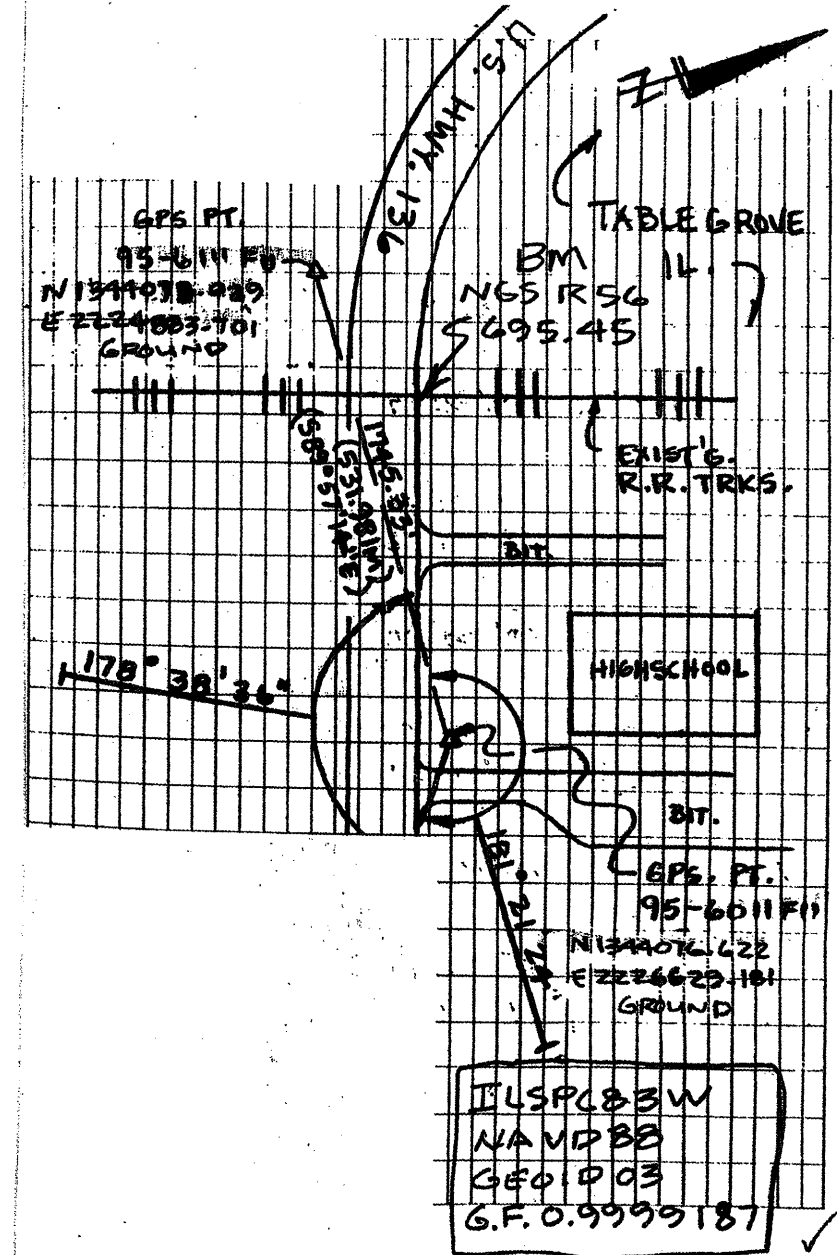
FROM STATION TO:	GRID DISTANCE	AZIMUTH
6111 to 6011	531.981 m	90°02'46"

STATION DESCRIPTION: BERNSTEN 3D TOP SECURITY GPS MONUMENT. CONSISTING OF A 9/16" DIA. STAINLESS STEEL DATUM POINT ON THREADED 9/16" x 4' LONG ROD TOTALING (8') IN LENGTH WITH GREASED TOP SECURITY SLEEVE ENCLOSED IN SAND AND 6" PVC PIPE WITH BMAC 6 ALUMINUM ACCESS COVER.

TO REACH THE STATION FROM... THE INTERSECTION OF US HWY. 24 AND US HWY. 136, PROCEED WEST ON HWY. 136, 12.9 MILES TO THE STATION ON THE LEFT.



AMERICAN SURVEYING CONSULTANTS, P.C.



BENCH MARKS

- DISK STAMPED "R 56 1935". TOP OF N.E. WINGWALL OF R.R. BRIDGE OVER US 136, WEST OF V.I.T. HIGH SCHOOL. SHOT CONCRETE NEXT TO DISK BECAUSE WOOD PLANK LEANING OVER DISK. ELEVATION = 695.45
- B.M. #1 - TOP OF S.E. CORNER OF BRICK LEDGE (APP. 1.5' ABOVE GROUND) OF V.I.T. HIGH SCHOOL SIGN. ELEVATION = 695.39
- B.M. #2 - SET CHISSELED SQUARE, TOP OF EAST END OF HEADWALL OF BOX CULVERT UNDER US 136, STA. 490+35±, 25'± LT., N. SIDE OF US 136. ELEVATION = 671.72
- B.M. #3 - SET CHISSELED SQUARE, TOP OF EAST END OF HEADWALL OF BOX CULVERT UNDER US 136, STA. 497+70±, 25'± RT., SOUTH SIDE OF US 136. ELEVATION = 666.80
- B.M. #4 - SET CHISSELED SQUARE, TOP OF WEST END OF HEADWALL OF BOX CULVERT UNDER US 136, STA. 28+70±, 25'± RT. ELEVATION = 667.00
- B.M. #6 - SET CHISSELED SQUARE, N. EDGE OF PAVED DITCH, W. END OF PAVED DITCH N. SIDE OF US 136. SHOT ON TOP EDGE OF CONC. STA. 60+90±, 40'±, LT. ELEVATION = 666.81
- B.M. #7 - SET CHISSELED SQUARE, TOP OF WEST END OF HEADWALL OF BOX CULVERT UNDER US 136, NORTH SIDE OF US 136, STA. 74+05±, 25'± LT. ELEVATION = 659.80

FILE NAME = propplenhats.dgn	USER NAME = moltern	DESIGNED - DRAWN -	REVISED - REVISED -
	PLOT SCALE = 100.0000' / IN.	CHECKED -	REVISED -
	PLOT DATE = 3/28/2009	DATE -	REVISED -

**STATE OF ILLINOIS
DEPARTMENT OF TRANSPORTATION**

TIE POINTS & BENCH MARKS	
SCALE:	SHEET NO. OF SHEETS STA. TO STA.

F.A.P. RTE. 315	SECTION 109RS-4.110RS-2	COUNTY FULTON	TOTAL SHEETS 23
CONTRACT NO. 68330			ILLINOIS FED. AID PROJECT