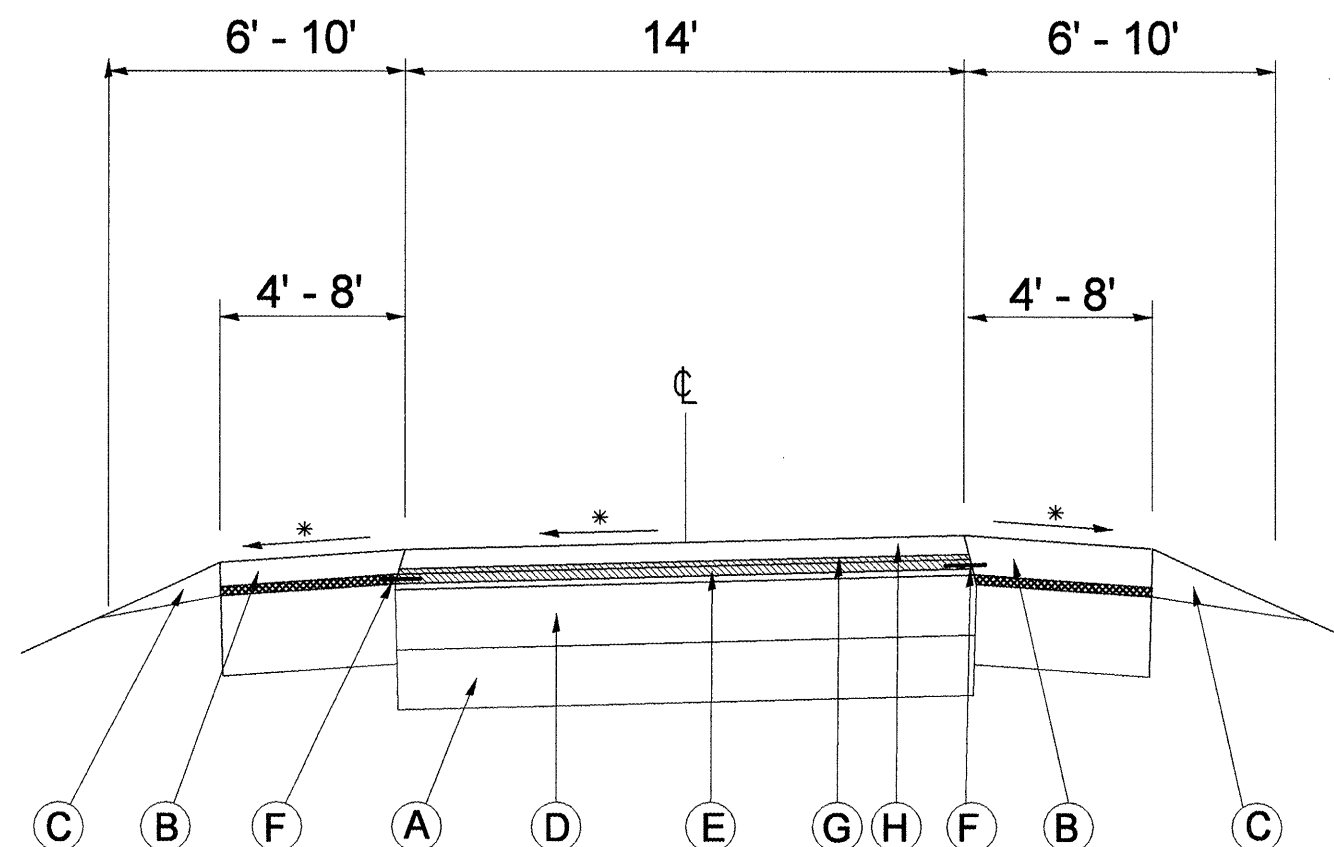


RAMPS



LEGEND

- A. EXIST. STD. REM. 10 P.C.C. PAVEMENT
- B. PROP. BIT. SHLDR 2 1/2"
- C. PROP. AGGREGATE SHOULDER WEDGE
- D. EXIST. BIT. CONC. OVERLAY
- E. PROP. BIT. CONC. SURF. REM 1 1/2"
- F. PROP. STRIP REFLEC. CRACK CONT. TREAT
- G. PROP. LEVELING BINDER IL 4.75 (3/4")
- H. PROP. BIT. CONC. SURFD. CSE MIX D (1 1/2")
- * MATCH EXISTING SLOPE

FILE NAME = 3P-US24EPEQ.dgn	USER NAME = mcfaddenjk	DESIGNED -	REVISED -	STATE OF ILLINOIS DEPARTMENT OF TRANSPORTATION	TYPICAL SECTION RAMPS	F.A.P. RTE. 317	SECTION (16,13)RS-3, 17RS-5, 14RS-1	COUNTY -	TOTAL SHEETS 56	SHEET NO. 29
	PLOT SCALE = 200.0000' / IN.	CHECKED -	REVISED -		SCALE: NONE	SHEET NO. OF SHEETS STA. TO STA.		CONTRACT NO. 68455		
	PLOT DATE = 4/9/2009	DATE -	REVISED -		US 24 FED. AID PROJECT					