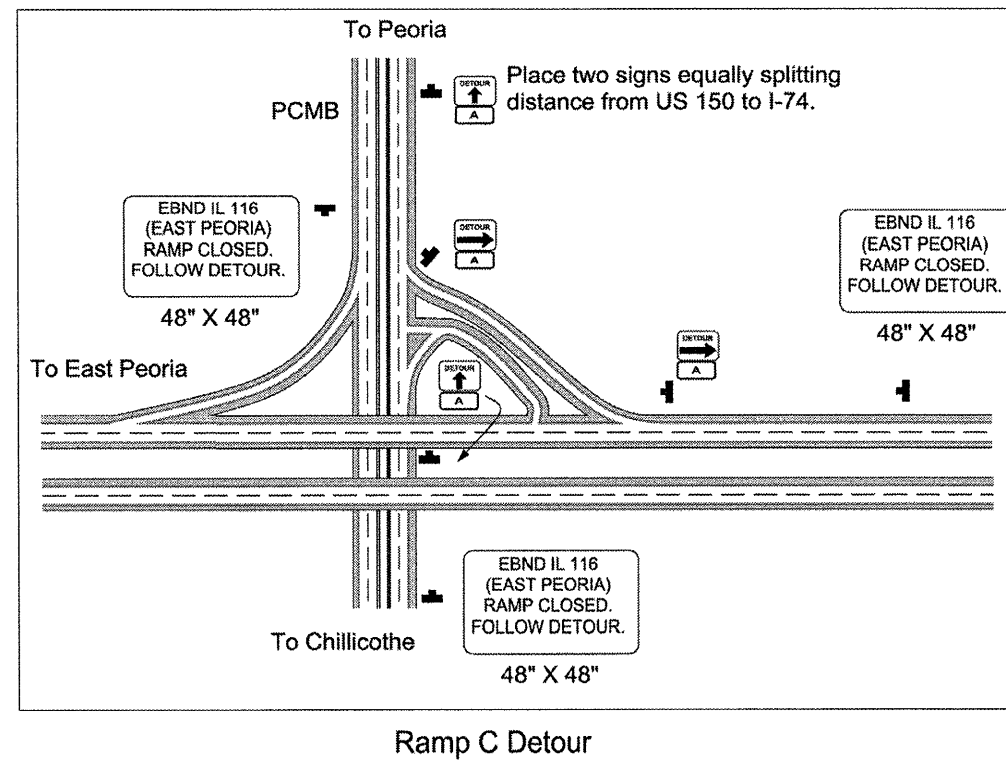
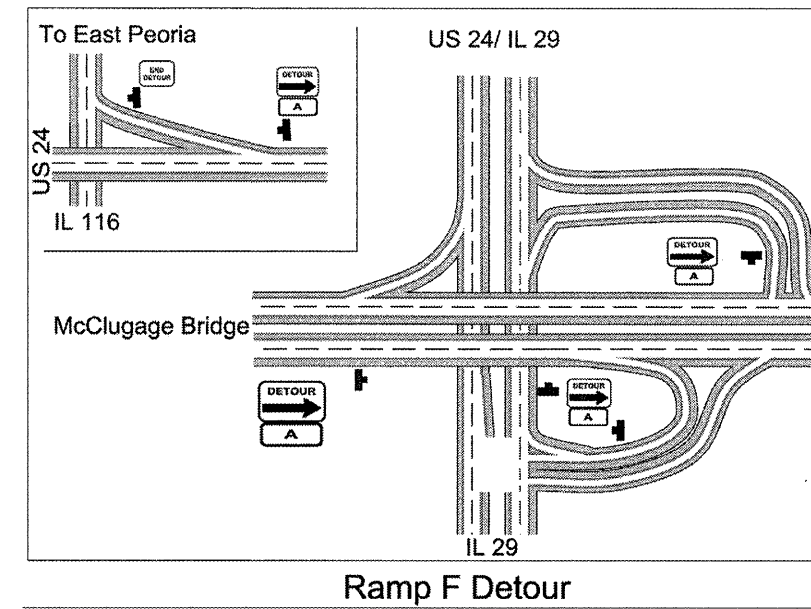
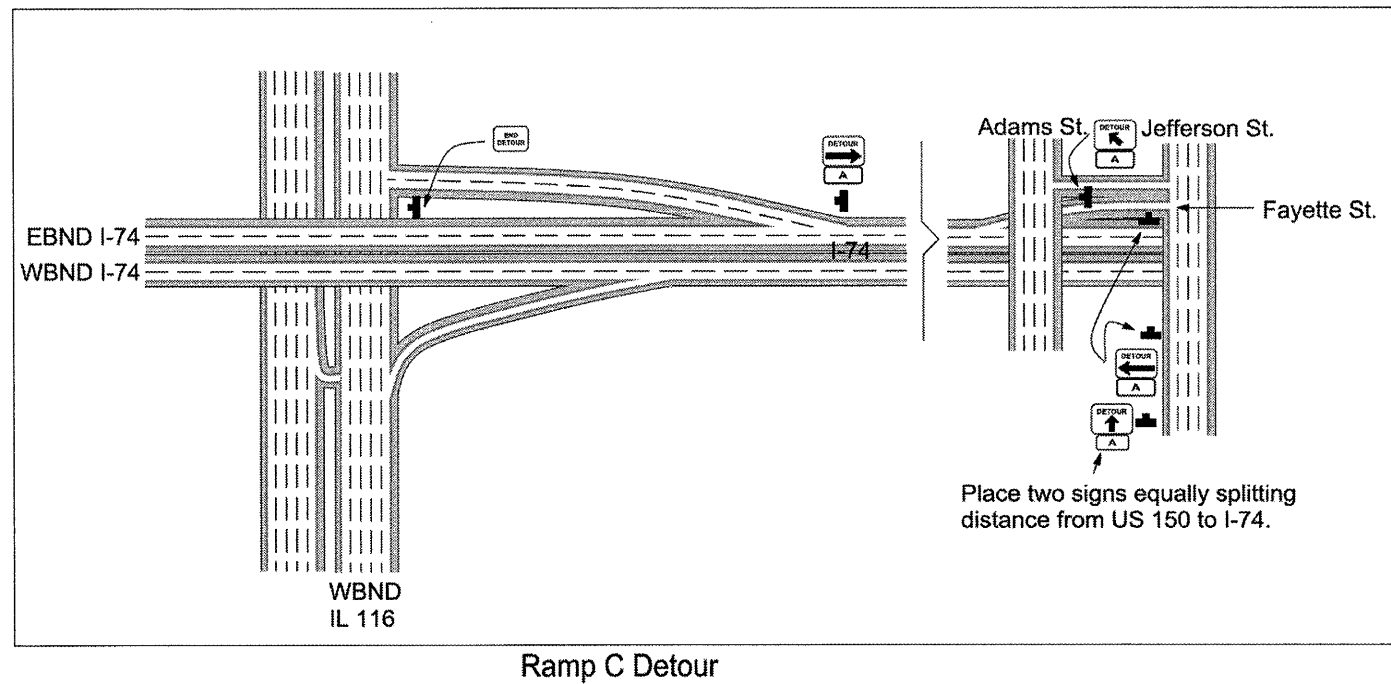


Ramp Closure Stage 3- Detour



General Notes

One (1) Portable Changeable Message Board (PCMB) shall be placed in advance of Ramp C closure on NBND IL 29/ EBND US 24 prior to the McClugage Bridge to advance warn motorists for the closure duration.

FILE NAME = SCHEDULES.dgn	USER NAME = horstkj	DESIGNED - KJH	REVISED -	STATE OF ILLINOIS DEPARTMENT OF TRANSPORTATION	RAMP STAGING DETAILS	F.A.P. RTE. 317	SECTION (16,13IRS-3,17RS-5,14RS-1)	COUNTY PEORIA/TAZEWELL	TOTAL SHEETS 56	SHEET NO. 42
PLOT SCALE = 100.0000 "/td> <td colspan="2" style="text-align: center;">SCALE: SHEET NO. OF SHEETS STA. TO STA.</td> <td colspan="5" style="text-align: center;">CONTRACT NO. 68455</td>				SCALE: SHEET NO. OF SHEETS STA. TO STA.		CONTRACT NO. 68455				
PLOT DATE = 4/10/2009						ILLINOIS FED. AID PROJECT				