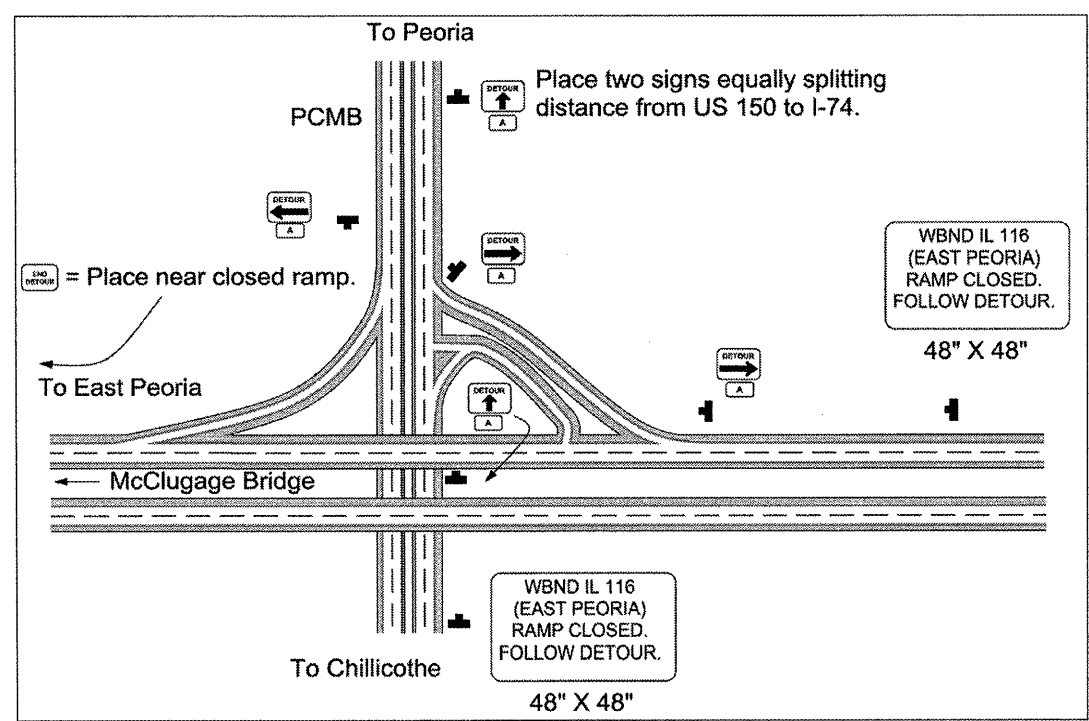
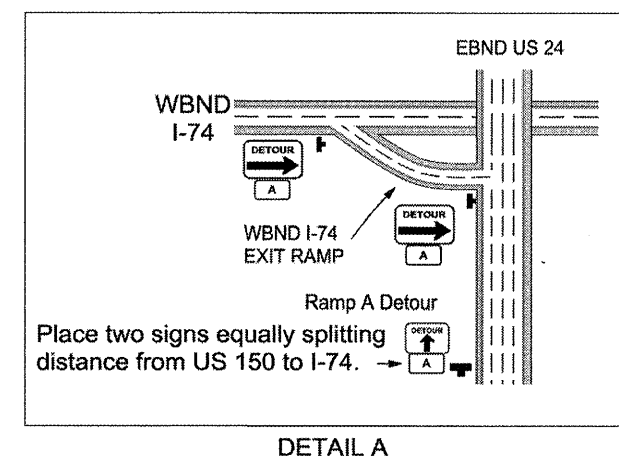
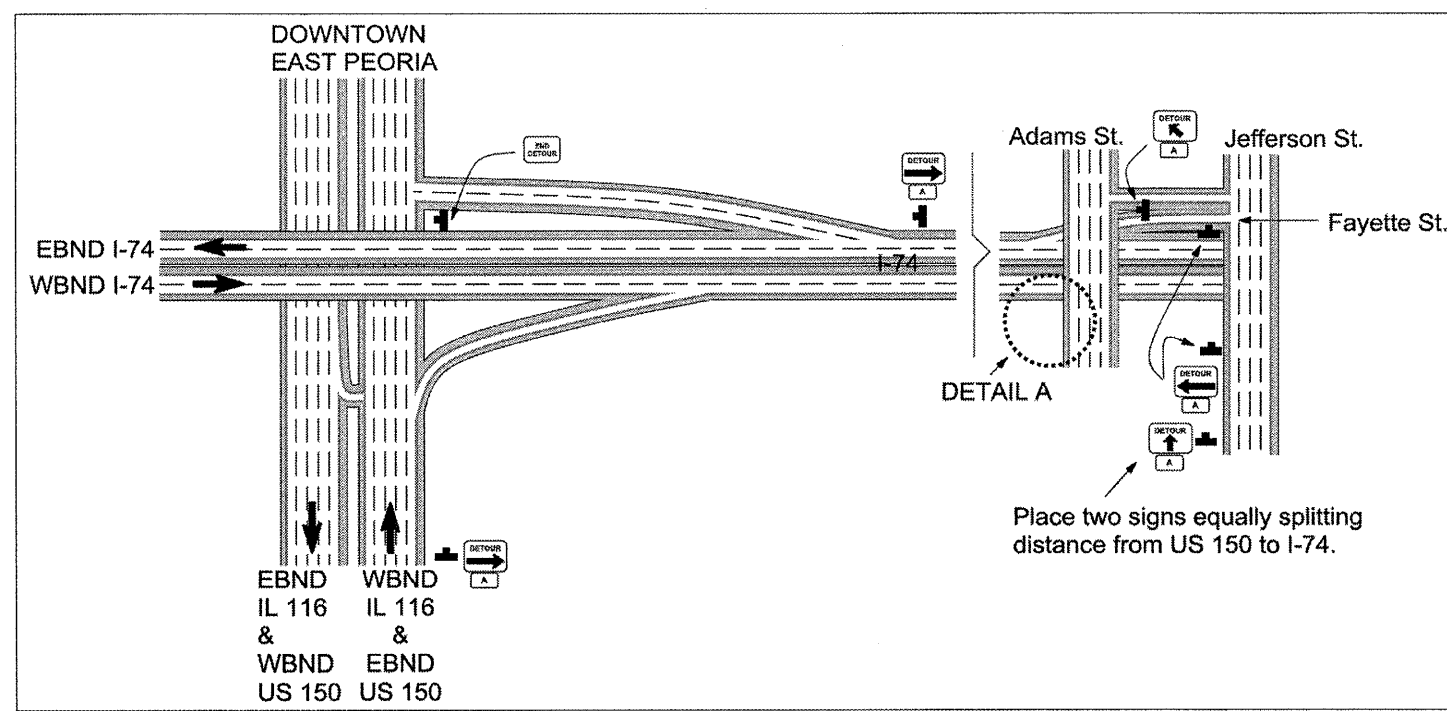


Ramp Closure Stage 4- Detour



General Notes

One (1) Portable Changeable Message Board (PCMB) shall be placed in advance of Ramp C closure on NBND IL 29/ EBND US 24 prior to the McClugage Bridge to advance warn motorists for the duration of Stage 3 and Stage 4 closures.

FILE NAME = SCHEDULES.dgn	USER NAME = horstkj	DESIGNED - KJH	REVISED -	STATE OF ILLINOIS DEPARTMENT OF TRANSPORTATION	RAMP STAGING DETAILS	F.A.P. RTE. 317	SECTION 116,131RS-3,17RS-5,14RS-1	COUNTY PEORIA/TAZEWELL	TOTAL SHEETS 56	SHEET NO. 44
PLOT SCALE = 100,0000' / IN.		DRAWN - JGJ						CONTRACT NO. 68455		
PLOT DATE = 4/10/2009		CHECKED -								SCALE: