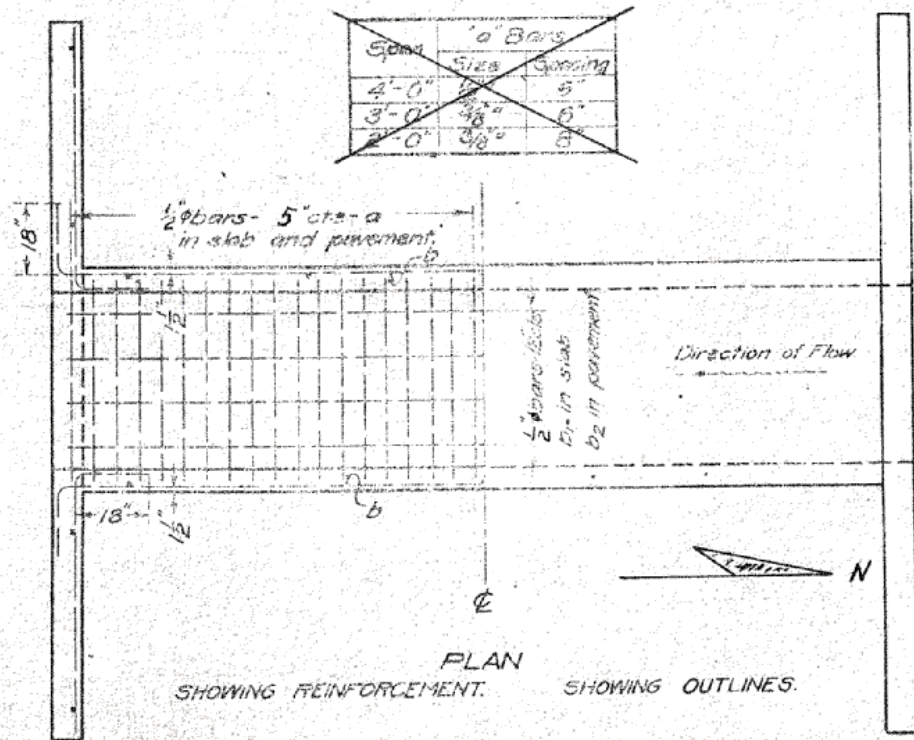
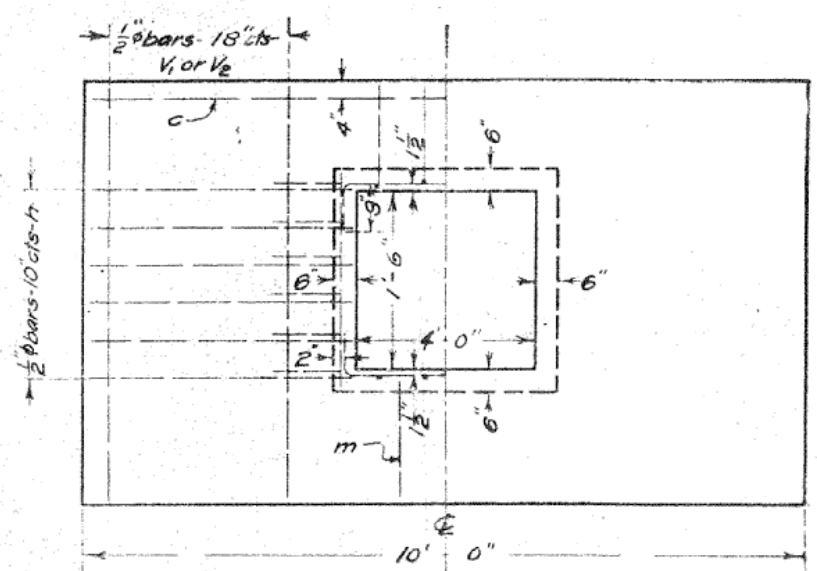
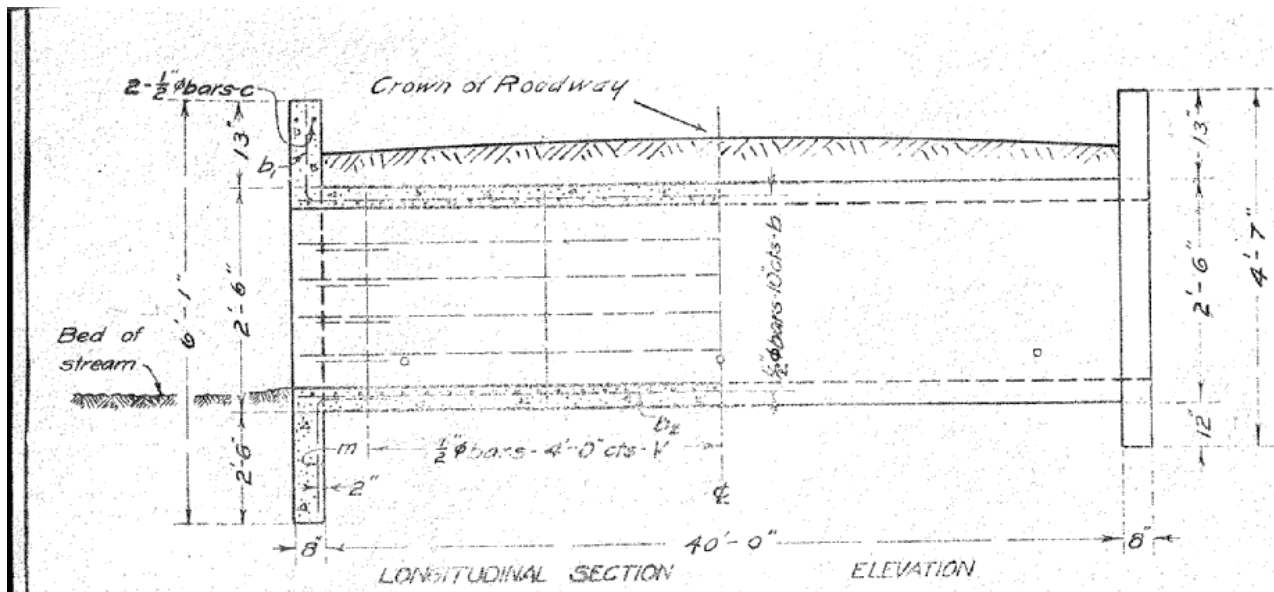


F.A.P. RTE.	SECTION	COUNTY	TOTAL SHEETS	SHEET NO.
323	(149,150)RS-3	EDGAR	83	36
STA.		TO STA.		
FED. ROAD DIST. NO.	ILLINOIS	FED. AID PROJECT		



Note:
 Exit over box should be limited to 4'-0"
 Maximum Clearance = 4'-0"
 Use "m" bars in downstream headwall only.

Station	Crown Elev.	Flow Line Elev.
1635+00	100.79	98.21
1701+00	90.51	87.93

BILL OF MATERIAL

Bars	No.	Size	Length
V	22	1/2"	2'-3"
V1	4	1/2"	5'-9"
V2	4	1/2"	4'-3"
h	12	1/2"	4'-0"
a	198	1/2"	6'-3"
b	12	1/2"	23'-0"
b1	4	1/2"	22'-0"
b2	4	1/2"	21'-6"
c	4	1/2"	9'-6"
m	2	1/2"	5'-0"
Steel - Lbs.		1250	
Concrete - Cu. Yds.		12.0	

BUILD TOPS OF HEAD-WALLS PARALLEL TO GRADE LINE.
 MINIMUM HEIGHT OF HEAD WALLS TO BE 12 INCHES ABOVE SHOULDER ELEVATION.

SPECIAL CULVERT DESIGN
 S.B.I. ROUTE 121 CONSTR. SEC. 149
 EDGAR COUNTY
 STA. 1635+00

STANDARD	COMPUTED	Walter B. Jordan
	CHECKED	W. B. Jordan
	DRAWN	W. B. Jordan
	CHECKED	W. B. Jordan

PASSED

PLOT DATE = 4/4/2009
 FILE NAME = c:\pvc\work\PROJECTS\EDGAR\70113\Culvert-02.dwg
 PLOT SCALE = 4:3225 / 1" IN.
 USER NAME = sherer_jm

ILLINOIS DEPARTMENT OF TRANSPORTATION
 EXISTING STRUCTURE INFORMATION
 STATION 1701+41.00
 FAP ROUTE 323 (US 36)
 SECTION (149,150)RS-3
 EDGAR COUNTY
 SCALE: NOT TO SCALE
 DATE: 08/12/2008
 DRAWN BY: JMS
 CHECKED BY: