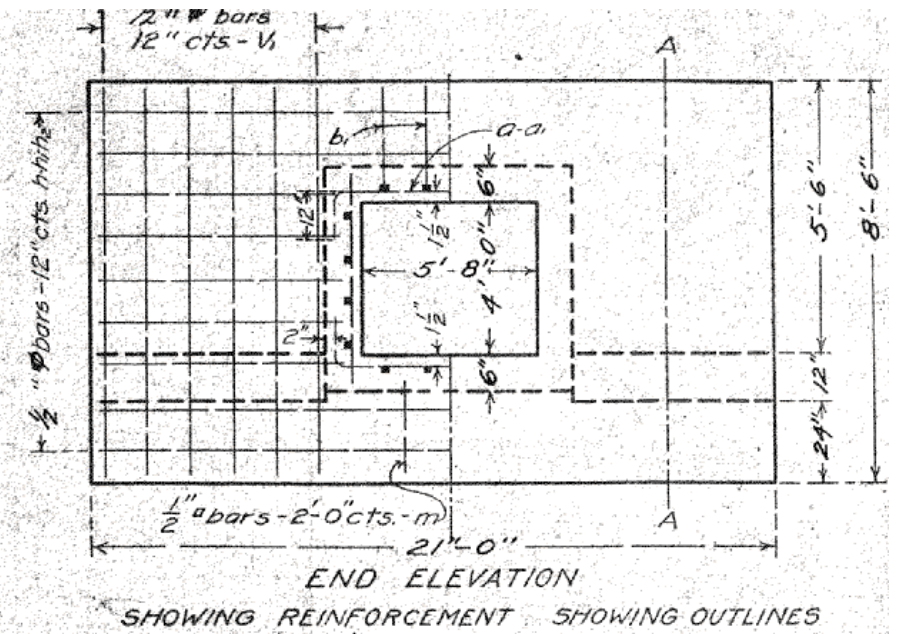
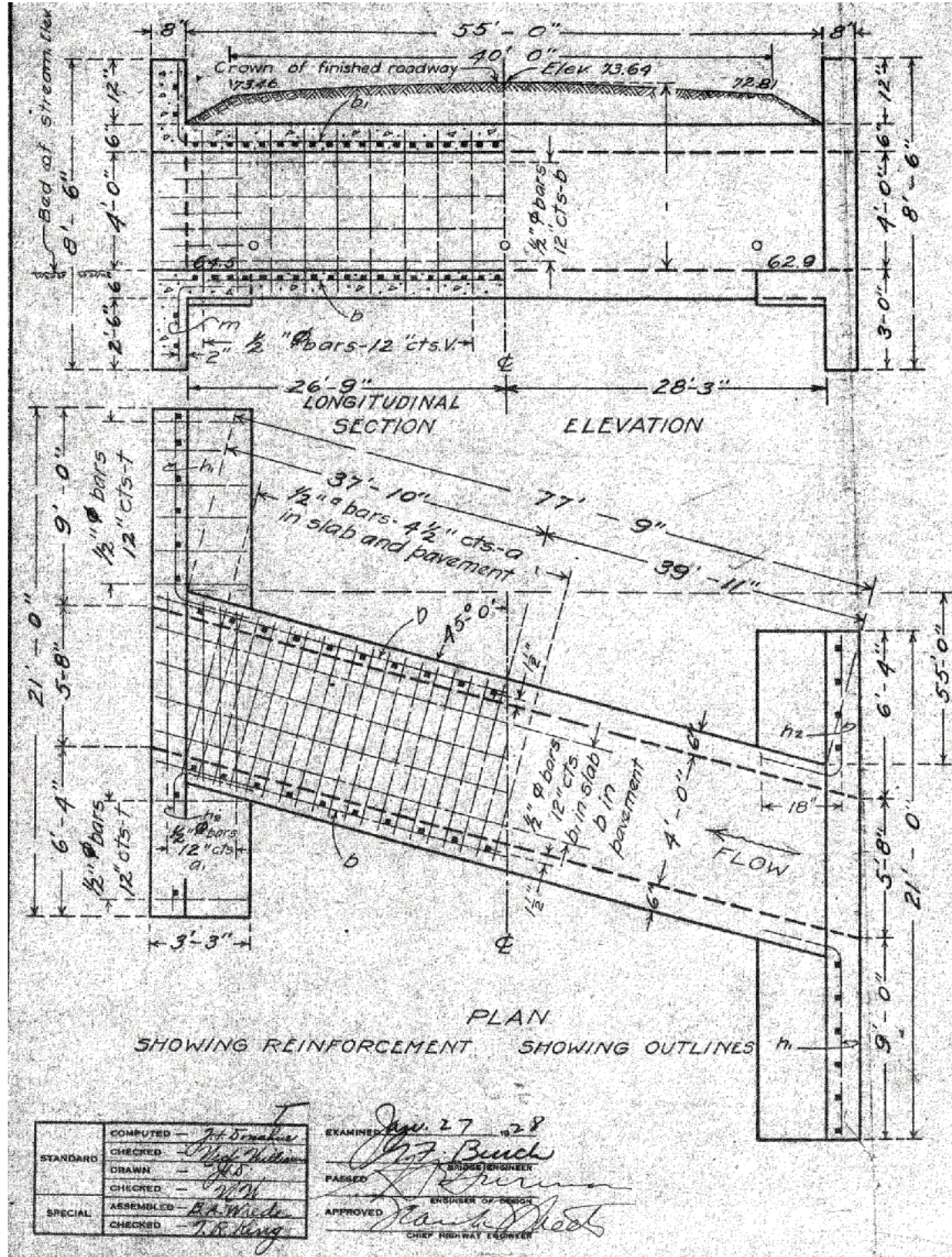
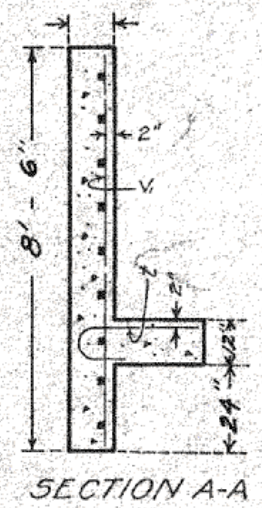


F.A.P. RTE.	SECTION	COUNTY	TOTAL SHEETS	SHEET NO.
323	(149,150)RS-3	EDGAR	83	43
STA.		TO STA.		
FED. ROAD DIST. NO.	ILLINOIS	FED. AID PROJECT		



BUILD TOPS OF HEAD-WALLS PARALLEL TO GRADE LINE.



BILL OF MATERIAL

Bars	No.	Size	Length
V	156	1/2" φ	4'-9"
V <sub>1</sub>	28	1/2" φ	8'-3"
h	10	1/2" φ	20'-6"
h <sub>1</sub>	8	1/2" φ	10'-3"
h <sub>2</sub>	8	1/2" φ	6'-6"
a	390	1/2" φ	6'-3"
a <sub>1</sub>	48	1/2" φ	8'-0"
b	44	1/2" φ	21'-6"
b <sub>1</sub>	20	1/2" φ	22'-0"
t	28	1/2" φ	3'-9"
m	3	1/2" φ	5'-0"
Steel-Lbs.			4280
Concrete-Cu. Yds.			36.3

Class ~~II~~ concrete to be used throughout. ~~Use 'm' bars in downstream headwall only.~~ Use 'm' bars in downstream headwall only.

SPECIAL CULVERT DESIGN  
S.B.I. RT. 121 CONST. SEC. 150  
Edgar County  
Station 1818+20  
1118

PLOT DATE = 4/4/2009  
FILE NAME = c:\pvc\work\p1001\SHERRER\JM\87384\70113\Culvert-08.dwg  
PLOT SCALE = 42.3529 / IN.  
USER NAME = sherrj

STANDARD	COMPUTED - J.H. Orndorff	EXAMINED - J.P. Bunch
	CHECKED - J.H. Orndorff	DESIGNED - J.P. Bunch
	DRAWN - J.H. Orndorff	PASSED - J.P. Bunch
SPECIAL	ASSEMBLED - B.A. Wiede	ENGINEER OF DESIGN - J.P. Bunch
	CHECKED - J.H. Orndorff	APPROVED - J.P. Bunch
		CHIEF HIGHWAY ENGINEER