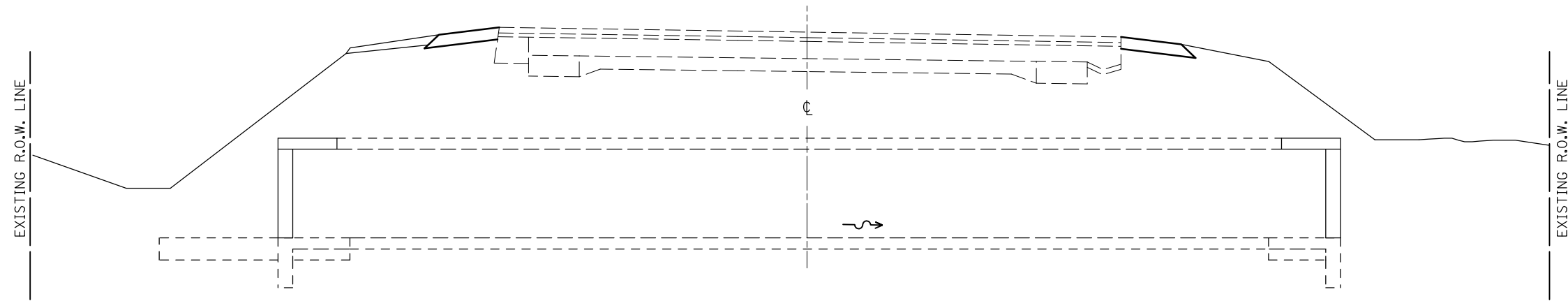


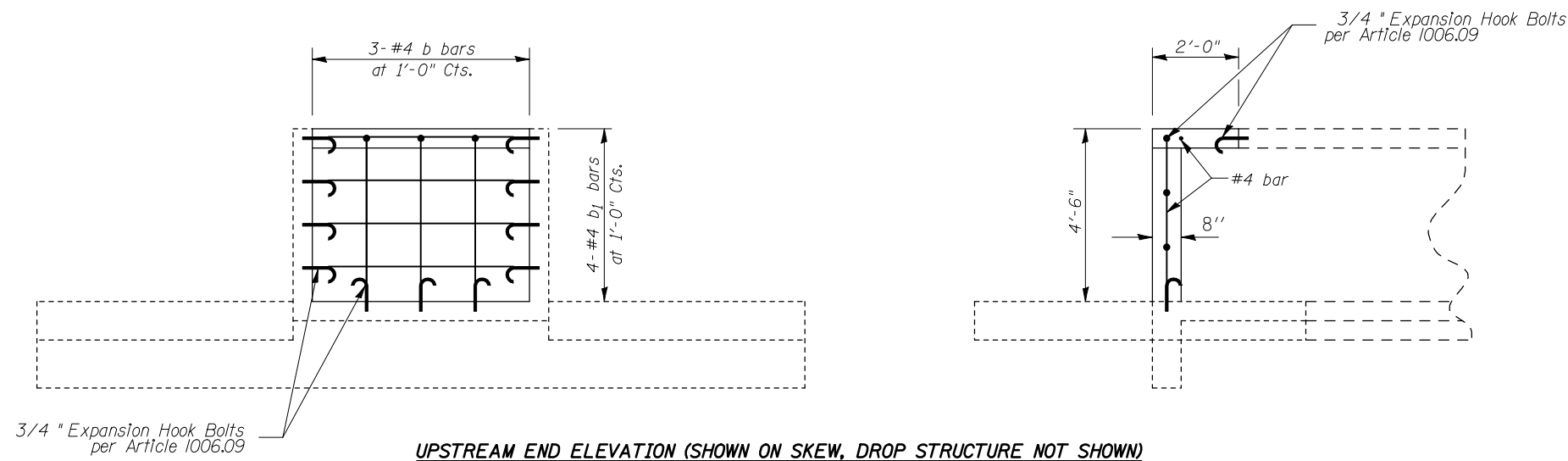
F.A.P. RTE.	SECTION	COUNTY	TOTAL SHEETS	SHEET NO.
323	(149,150)RS-3	EDGAR	83	45
STA.		TO STA.		
FED. ROAD DIST. NO.	ILLINOIS	FED. AID PROJECT		

CAPPING DETAIL FOR EXISTING STRUCTURE

STATION 1818 + 20.00



LONGITUDINAL SECTION



UPSTREAM END ELEVATION (SHOWN ON SKEW, DROP STRUCTURE NOT SHOWN)

DETAIL NOTES:

- ① Concrete Headwall Removal shall be removed and new cap in place prior to the filling of the existing box culvert.
- ② The engineer may modify the locations of the removal to accomodate staging.
- ③ Filling of the existing culvert along with the capping may be done prior to the construction of the new A.R. Culvert..
- ④ Expansion bolts shall consist of self drilling expansion shields & 3/4" Ø hooked bolts. Bolts shall extend a minimum of 9" into existing concrete.



DOWNSTREAM END ELEVATION (NOT SHOWN ON SKEW)

BILL OF MATERIAL

Bar	No.	Size	Length	Shape
b	3	#4	4'-0"	—
b ₁	4	#4	5'-0"	—
b ₂	2	#4	4'-0"	—
b ₃	3	#4	3'-8"	—
Class SI Concrete			Cu. Yd.	1.4
Reinforcement Bars			Pound	35.0
3/4" EXP. HK. BOLTS			EACH	24.0

Item	Unit	Qty.
Concr. Low Str. Matl.	Cu. Yd.	318.0

DRAWING NOT TO SCALE

SHEET 4 OF 8

ILLINOIS DEPARTMENT OF TRANSPORTATION
DETAIL OF CONTROLLED LOW STRENGTH MATERIAL, STA. 1818+20
 FAP ROUTE 323 (US 36)
 SECTION (149,150)RS-3
 EDGAR COUNTY

SCALE: NOT TO SCALE DRAWN BY: JMS
 DATE: 06/12/2008 CHECKED BY:

3/4" Expansion Hook Bolts per Article 1006.09