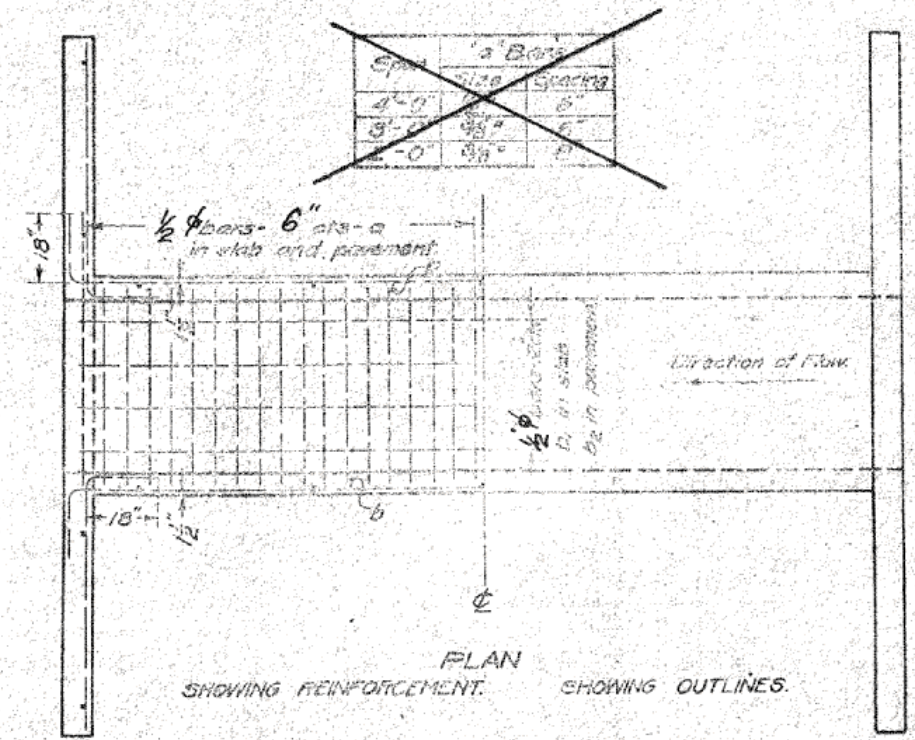
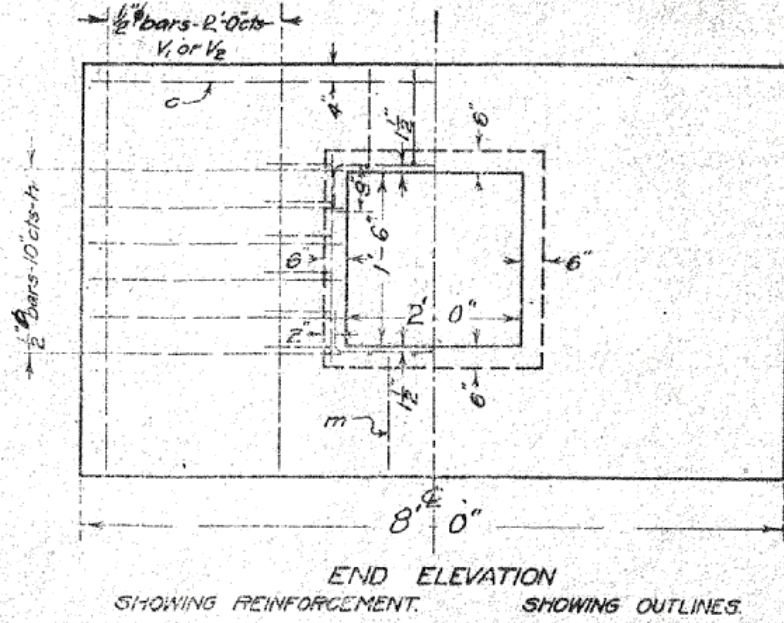
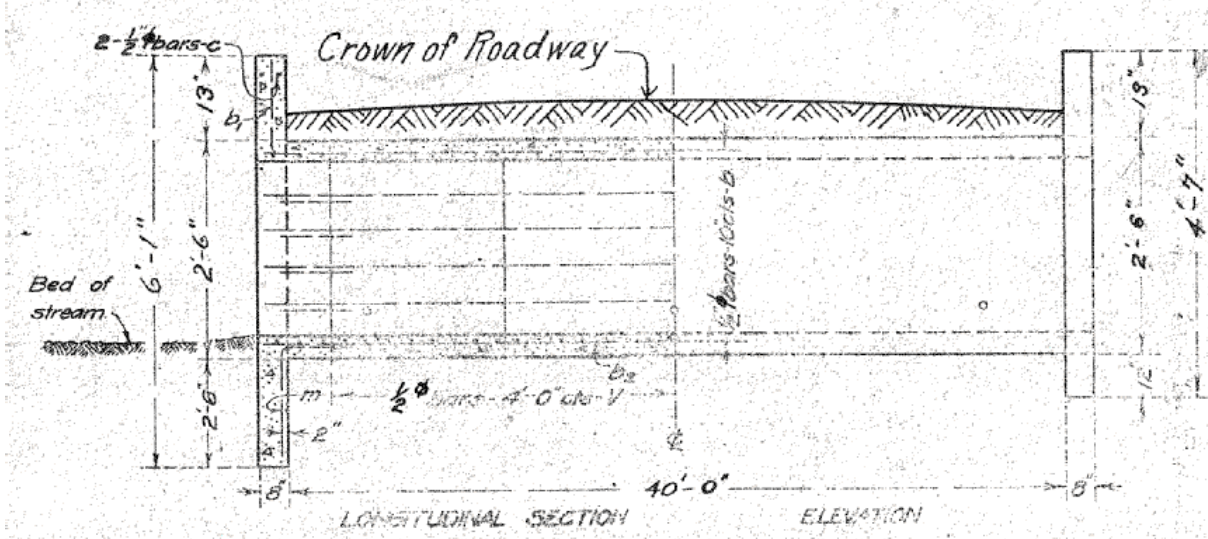


F.A.P. RTE.	SECTION	COUNTY	TOTAL SHEETS	SHEET NO.
323	(149,150)RS-3	EDGAR	83	50
STA.		TO STA.		
FED. ROAD DIST. NO.	ILLINOIS	FED. AID PROJECT		



Note:
~~Fill in below should be limited to 4'-0"~~
 Maximum Clearance = 4'-0"
 Use 'm' Bars in downstream headwall only.

STATION	CROWN Elev	Flow L. Elev.
1833+00	79.17	76.59
2044+63	71.95	69.37

BILL OF MATERIAL

Bars	No.	Size	Length
V	22	1/2" φ	2'-3"
V ₁	4	1/2" φ	5'-9"
V ₂	4	1/2" φ	4'-3"
h	12	1/2" φ	4'-0"
a	166	1/2" φ	4'-3"
b	12	1/2" φ	23'-0"
b ₁	4	1/2" φ	22'-6"
b ₂	4	1/2" φ	21'-6"
c	4	1/2" φ	7'-6"
m	2	1/2" φ	5'-0"
Steel - Lbs.			890
Concrete - Cu. Yds.			8.6

BUILD TOPS OF HEAD-WALL PARALLEL TO GRADE LINE.
 ADJUST HEIGHT OF HEAD WALLS TO BE 12 INCHES ABOVE SHOULDER ELEVATION.

X
 Class A concrete to be used throughout

SPECIAL CULVERT DESIGN
 S.B.I. Rt 121 CONST. SEC. 150
 EDGAR COUNTY ILL.
 STA. 1833+00
 STA. 2044+63

STANDARD	COMPUTED	Walter J. Tamm
	CHECKED	H. J. ...
	DRAWN	W. J. ...
	CHECKED	...
SPECIAL	ASSEMBLED	B.A. Reed
	CHECKED	T. R. ...

PASSED
 EXAMINED
 M. J. Burch
 BRIDGE ENGINEER
 ENGINEER OF DESIGN.

APPROVED
 Jan 27 2008

ILLINOIS DEPARTMENT OF TRANSPORTATION
 EXISTING STRUCTURE INFORMATION
 STATION 1833+78.50
 FAP ROUTE 323 (US 36)
 SECTION (149,150)RS-3
 EDGAR COUNTY
 SCALE: NOT TO SCALE DRAWN BY: JMS
 DATE: 07/22/2008 CHECKED BY:

PLOT DATE = 4/4/2009
 FILE NAME = c:\pvc\work\PROJECTS\149150\149150RS-3\1833Culvert-02.dwg
 PLOT SCALE = 4:3250 / IN.
 USER NAME = sherer_jm