

F.A.S. RTE.	SECTION	COUNTY	TOTAL SHEETS	SHEET NO.
1476	(55,56)RS-3	McLean	24	1
		ILLINOIS	CONTRACT NO. 70511	

STATE OF ILLINOIS  
DEPARTMENT OF TRANSPORTATION  
DIVISION OF HIGHWAYS

**PROPOSED  
HIGHWAY PLANS**

F.A.S. ROUTE 1476 (OLD U.S. 51)  
SECTION (55,56)RS-3

MCLEAN COUNTY

C-95-032-06

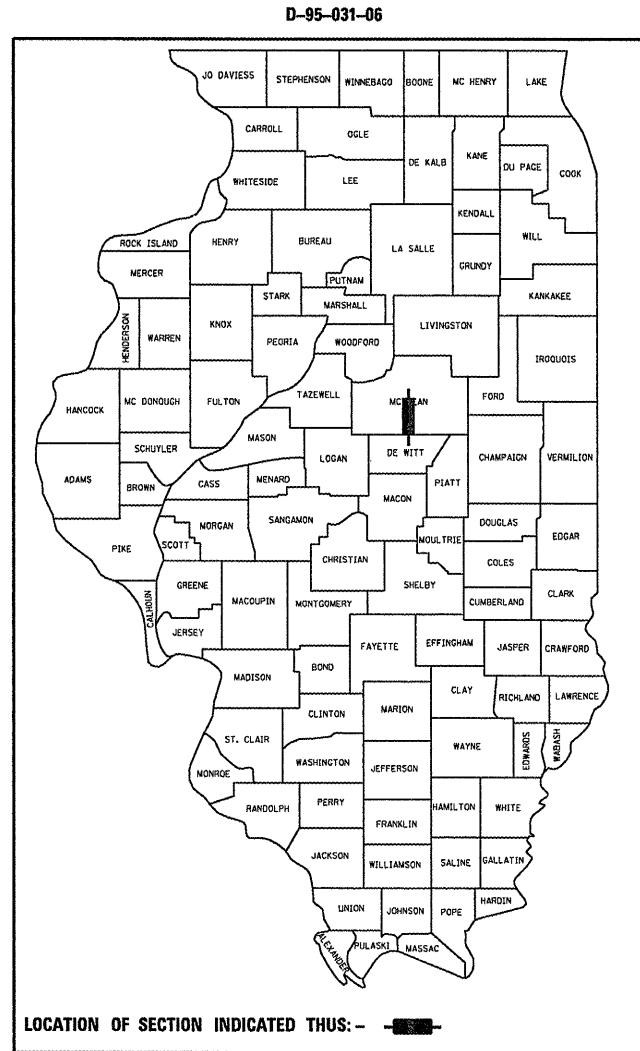
RESURFACING (3P)

2.5 MI. S. OF I-74 to 1 MI. S. OF HEYWORTH

FOR INDEX OF SHEETS, SEE SHEET NO. 2  
FOR SUMMARY OF QUANTITIES, SEE SHEET NO. 4

**CURRENT ADT**  
2500 - (2007)  
MINOR ARTERIAL (RURAL)

**DESIGN DESIGNATION**  
N/A



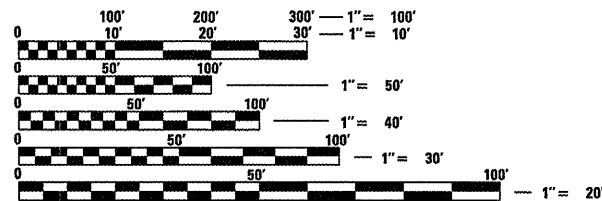
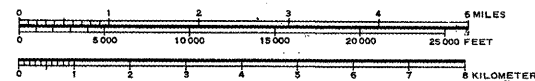
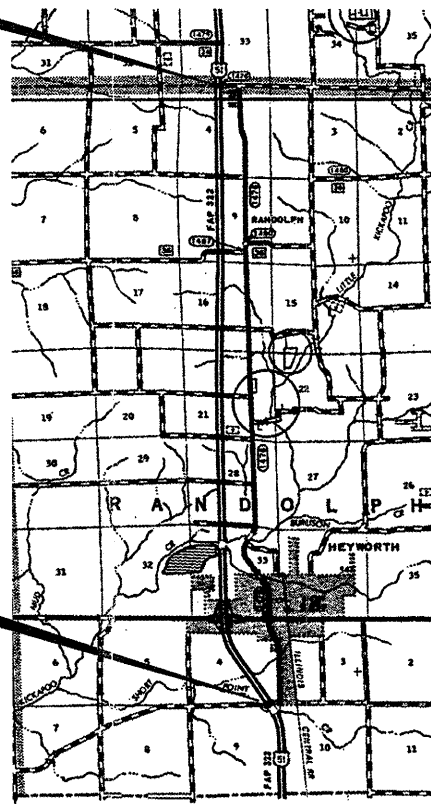
OMISSIONS FROM PAVING

US 136 - INTERSECTION,  
SN 057-0225 - BRIDGE,  
SN 057-0056 - BRIDGE,  
SN 057-8208 - CULVERT,  
SN 057-8207 - CULVERT,  
SN 057-8209 - CULVERT,

END PROJECT  
TR 800 N. RD STA. 446+92.80

STA. 106+00 TO STA. 108+00  
STA. 133+20.55 TO STA. 134+11.45  
STA. 158+59.74 TO STA. 160+79.46  
STA. 271+65 TO STA. 271+95  
STA. 289+63 TO STA. 289+97  
STA. 310+22 TO STA. 310+56

BEGIN PROJECT  
TR 100 N. RD STA. 51+96.00



FULL SIZE PLANS HAVE BEEN PREPARED USING STANDARD ENGINEERING SCALES. REDUCED SIZED PLANS WILL NOT CONFORM TO STANDARD SCALES. IN MAKING MEASUREMENTS ON REDUCED PLANS, THE ABOVE SCALES MAY BE USED.

J.U.L.I.E.  
JOINT UTILITY LOCATION INFORMATION FOR EXCAVATION  
1-800-892-0123  
OR 811 TOWNSHIPS: RANDOLPH & EMPIRE

PROJECT ENGINEER: NANCY FASIG  
SQUAD LEADER: JASON W. STULTS  
DESIGNER: MATT YOUNG  
CONTRACT NO. 70511

GROSS LENGTH = 39,496.00 FT. = 7.480 MILES  
NET LENGTH = 39,069.60 FT. = 7.400 MILES

STATE OF ILLINOIS  
DEPARTMENT OF TRANSPORTATION  
DIVISION OF HIGHWAYS

SUBMITTED 4/29 2009

*Joseph R. Lowe*  
DEPUTY DIRECTOR OF HIGHWAYS, REGION ENGINEER

*March 13, 2009*  
*Charles J. Ingersoll*  
ENGINEER OF DESIGN AND ENVIRONMENT

*March 13, 2009*  
*Christine M. Reed*  
DIRECTOR OF HIGHWAYS, CHIEF ENGINEER

PRINTED BY THE AUTHORITY  
OF THE STATE OF ILLINOIS