

F.A.P. RTE.	SECTION	COUNTY	TOTAL SHEETS	SHEET NO.
323	(147,148,149)RS-4	EDGAR	23	1
		ILLINOIS	CONTRACT NO. 70714	

STATE OF ILLINOIS
DEPARTMENT OF TRANSPORTATION
DIVISION OF HIGHWAYS
**PROPOSED
HIGHWAY PLANS**

FOR INDEX OF SHEETS, SEE SHEET NO. 2
FOR SUMMARY OF QUANTITIES, SEE SHEET NO. 4 & 5

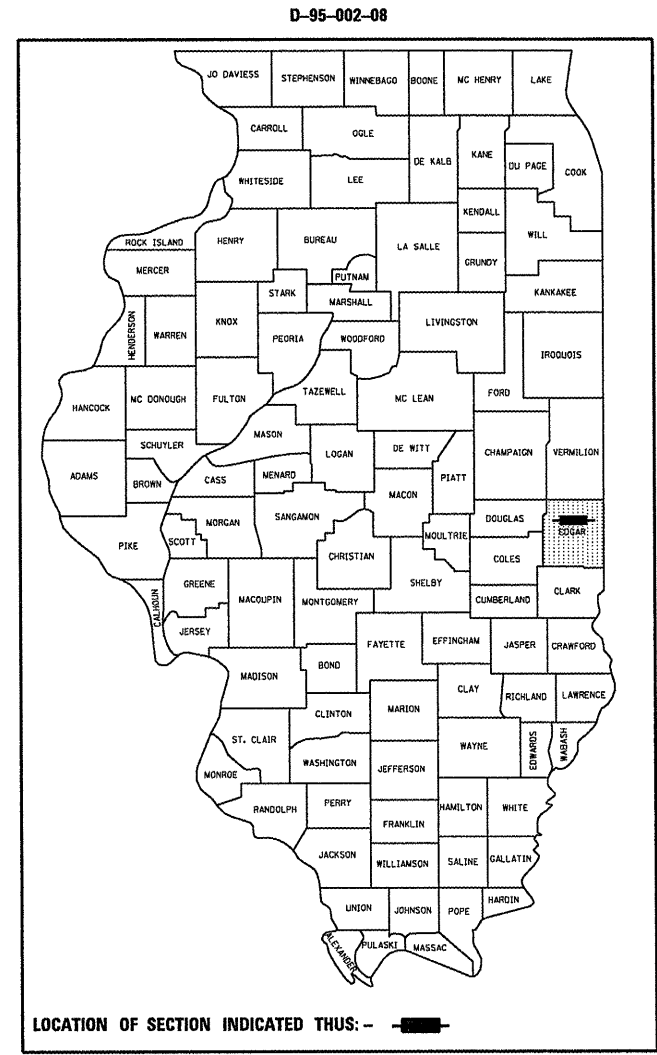
PAVING OMISSIONS:

- S.N. 023-0027 - STA. 990+71.00 TO STA. 991+73.00
- S.N. 023-0028 - STA. 1046+26.50 TO STA. 1047+27.50
- S.N. 023-2013 - STA. 1120+32.00 TO STA. 1122+12.00
- S.N. 023-0031 - STA. 1182+01.75 TO STA. 1182+98.25
- RAILROAD : STA. 1281+31.00 TO STA. 1281+43.40
- S.N. 023-0032 - STA. 1338+67.00 TO STA. 1339+83.35
- S.N. 023-0007 - STA. 1522+26.00 TO STA. 1523+04.00
- S.N. 023-0033 - STA. 1579+91.00 TO STA. 1581+49.00
- S.N. 023-9911 (RR UNDERPASS) STA 1650+67.50 TO STA 1651+92.50

HMA SURFACING (1 1/2" INLAY)

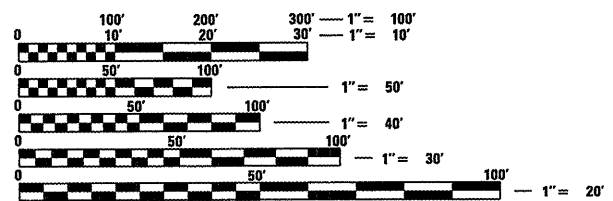
- S.N. 023-8010
- S.N. 026-8011
- S.N. 023-8012
- S.N. 023-8013
- S.N. 023-8014
- S.N. 023-8015
- S.N. 023-8016
- S.N. 023-0033

**F.A.P. ROUTE 323 (U.S. 36)
SECTION (147,148,149)RS-4
RESURFACING (SMART)
IL 49 TO IL 1 (U.S. 150)
EDGAR COUNTY
PROJECT
C-95-002-08**



CURRENT ADT
IL 49 TO FAS 683 = 1,950 (2009)
FAS 683 TO IL 1 = 1,650 (2009)

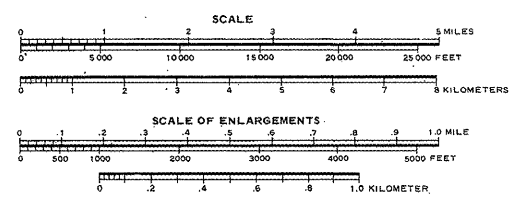
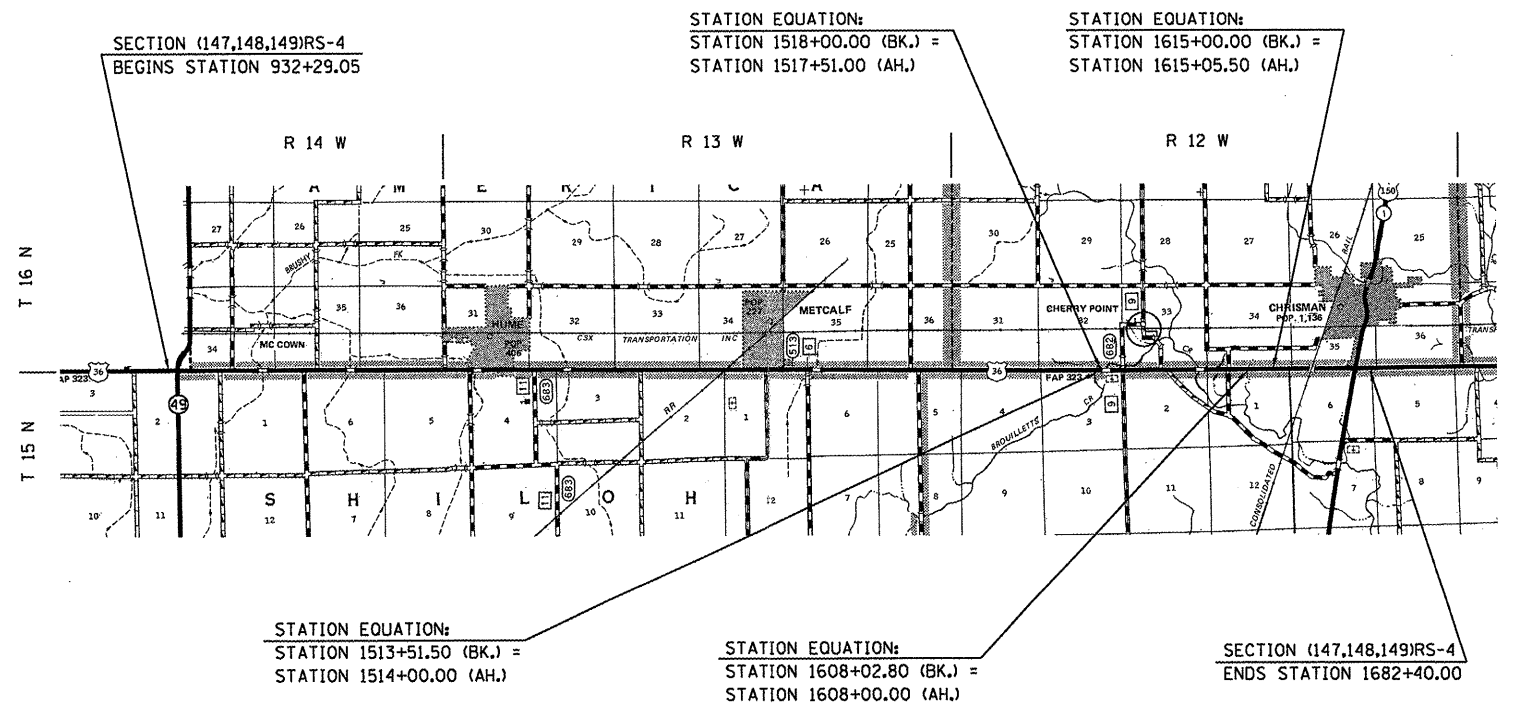
DESIGN DESIGNATION
OTHER PRINCIPAL ARTERIAL



FULL SIZE PLANS HAVE BEEN PREPARED USING STANDARD ENGINEERING SCALES. REDUCED SIZED PLANS WILL NOT CONFORM TO STANDARD SCALES. IN MAKING MEASUREMENTS ON REDUCED PLANS, THE ABOVE SCALES MAY BE USED.

J.U.L.I.E.
JOINT UTILITY LOCATION INFORMATION FOR EXCAVATION
1-800-892-0123
OR 811

**PROJECT ENGINEER: KEVIN TRAPP
SQUAD LEADER: CHRIS GREESON
DESIGNER: MATTHEW MURPHY
CONTRACT NO. 70714**



GROSS LENGTH = 75,008.75 FT. = 14.206 MILES
NET LENGTH = 74,039.50 FT. = 14.023 MILES

STATE OF ILLINOIS
DEPARTMENT OF TRANSPORTATION
DIVISION OF HIGHWAYS

SUBMITTED 4/9 20 09

Joseph K. Rowe
DEPUTY DIRECTOR OF HIGHWAYS, REGION ENGINEER

May 1, 20 09
Charles G. Ingersoll
ENGINEER OF DESIGN AND ENVIRONMENT

May 1, 20 09
Christin M. Reed
DIRECTOR OF HIGHWAYS, CHIEF ENGINEER

**PRINTED BY THE AUTHORITY
OF THE STATE OF ILLINOIS**