

INDEX OF SHEETS

DESCRIPTION	SHEET NO.
COVER SHEET	1
GENERAL NOTES	2
SUMMARY OF QUANTITIES	3-6
SCHEDULE OF QUANTITIES	7-10
TYPICAL SECTIONS	11-13
HORIZONTAL AND VERTICAL CONTROL/ROW PLAN	14
CROSS TIES	14a
PLAN & PROFILE SHEETS - FAS 1613	15-17
PLAN & PROFILE SHEET - CH 15	18
INTERSECTION GEOMETRIC DETAILS	19
INTERSECTION ELEVATIONS	20-21
INTERSECTION PAVEMENT MARKINGS	22
TRAFFIC CONTROL & PROTECTION SHEETS	23-24
BUTT-JOINT DETAILS	25
SIDE ROAD AND ENTRANCE DETAILS	26-27
EXCELSIOR BLANKET AND RUMBLE STRIP DETAILS	28
CROSS SECTIONS - FAS 1613	29-41
CROSS SECTIONS - TR 124	42-43
CROSS SECTIONS - CH 15	44-46

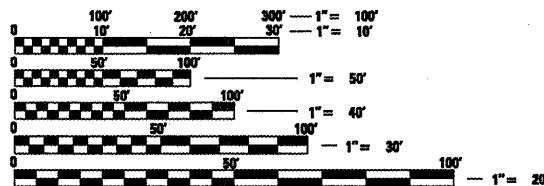
HIGHWAY STANDARDS

000001-05	STANDARD SYMBOLS, ABBREVIATIONS AND PATTERNS
280001-04	TEMPORARY EROSION CONTROL SYSTEMS
442201-03	CLASS 'C' AND 'D' PATCHES
482011-03	HMA SHOULDER ADJACENT TO FLEXIBLE PAVEMENT
701001-02	OFF-ROAD OPERATIONS, 2L, 2W, MORE THAN 4.5m (15') AWAY
701006-03	OFF-ROAD OPERATIONS, 2L, 2W, 4.5m (15') TO 600mm (24") FROM PAVEMENT EDGE
701011-02	OFF-ROAD MOVING OPERATIONS, 2L, 2W, DAY ONLY
701201-03	LANE CLOSURE, 2L, 2W, DAY ONLY, FOR SPEEDS >45 MPH
701301-03	LANE CLOSURE, 2L, 2W, SHORT TIME OPERATIONS
701306-02	LANE CLOSURE, 2L, 2W, SLOW MOVING OPERATIONS DAY ONLY, FOR SPEEDS > 45 MPH
701326-03	LANE CLOSURE, 2L, 2W, PAVEMENT WIDENING, FOR SPEEDS > 45 MPH
701901-01	TRAFFIC CONTROL DEVICES
720001-01	SIGN PANEL MOUNTING DETAILS
720006-02	SIGN PANEL ERECTION DETAILS
728001-01	TELESCOPING STEEL SIGN SUPPORT
780001-02	TYPICAL PAVEMENT MARKINGS
BLR 21-08	TYPICAL APPLICATION OF TRAFFIC CONTROL DEVICES FOR CONSTRUCTION ON RURAL LOCAL HIGHWAYS

DESIGN DESIGNATIONS

WEST & EAST LEGS - OLD US 36 (ILL 54/OLD JACKSONVILLE HIGHWAY)
 3800 - 2005 ADT / 4600 - 2025 ADT
 NORTH LEG - COUNTY HIGHWAY 15 (FARMINGDALE ROAD)
 700 - 2005 ADT / 850 - 2025 ADT
 SOUTH LEG - TR 124
 150 - 2005 ADT / 200 - 2025 ADT
 55 MPH DESIGN SPEED ON FAS 1613
 "3R" STANDARDS
 WB-55 DESIGN VEHICLE

FAS 1613 - STA 214+94.7 TO STA 226+45.2 - 1,150.50 FEET
 TR 124 - STA 9+38.31 TO STA 10+00 - 61.69 FEET
 CH 15 - STA 10+00 TO STA 12+50 - 250 FEET
 NET LENGTH - 1,462.19 FEET = 0.277 MILES
 PVI: EAST - 94.1' WEST - 95.1' NORTH - 97.1' SOUTH - 92.9'
 SL: EAST - 2.8% WEST - 2.3% NORTH - 5.0% SOUTH - 4.2%
 ML: EAST - 3.3% WEST - 1.6% NORTH - 7.9% SOUTH - 3.0%



FULL SIZE PLANS HAVE BEEN PREPARED USING STANDARD ENGINEERING SCALES. REDUCED SIZED PLANS WILL NOT CONFORM TO STANDARD SCALES. IN MAKING MEASUREMENTS ON REDUCED PLANS, THE ABOVE SCALES MAY BE USED.

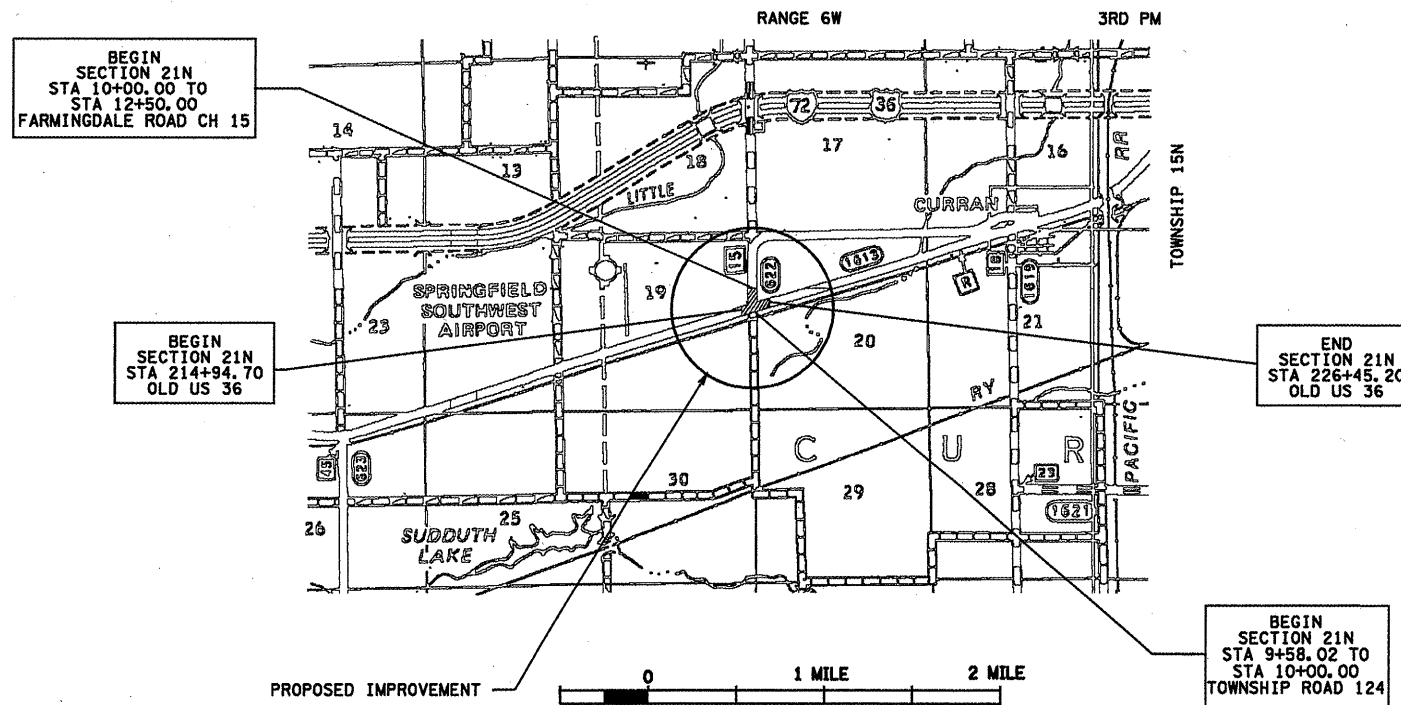
J.U.L.I.E.
 JOINT UTILITY LOCATION INFORMATION FOR EXCAVATION
 1-800-892-0123

CONTRACT NO. 72842

STATE OF ILLINOIS
DEPARTMENT OF TRANSPORTATION
DIVISION OF HIGHWAYS
PROPOSED
HIGHWAY PLANS

THE INTERSECTION OF OLD US 36 WITH
COUNTY HIGHWAY 15 - FARMINGDALE ROAD
FAS ROUTE 1613 (OLD US 36)
SECTION 21N

SANGAMON COUNTY
C-96-046-09

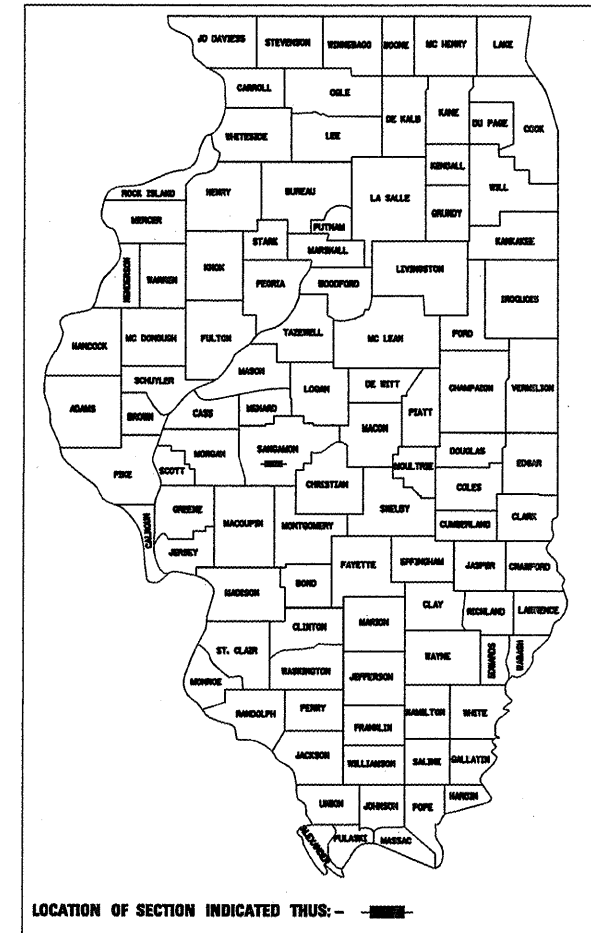


GROSS LENGTH OF IMPROVEMENT - 1,462.19 FEET (0.277 MILES)
 NET LENGTH OF IMPROVEMENT - 1,462.19 FEET (0.277 MILES)

F.A.S. R.T.C.	SECTION	COUNTY	TOTAL SHEETS	SHEET NO.
1613	21N	SANGAMON	46	1

#46+1=47

D-96-558-03



LOCATION OF SECTION INDICATED THIS: -

STATE OF ILLINOIS
 DEPARTMENT OF TRANSPORTATION
 DIVISION OF HIGHWAYS

SUBMITTED April 7, 2009
Ron Z. Danks
 DEPUTY DIRECTOR OF HIGHWAYS - REGION FOUR ENGINEER

May 1, 2009
Charles J. Ingersoll
 ENGINEER OF DESIGN AND ENVIRONMENT

May 1, 2009
Christine M. Reed
 DIRECTOR, DIVISION OF HIGHWAYS

PRINTED BY THE AUTHORITY
OF THE STATE OF ILLINOIS

PROJECT ENGINEER: SAL MADONIA: 217-782-4761
 SQUAD LEADER: JEFF MYERS: 217-524-7940