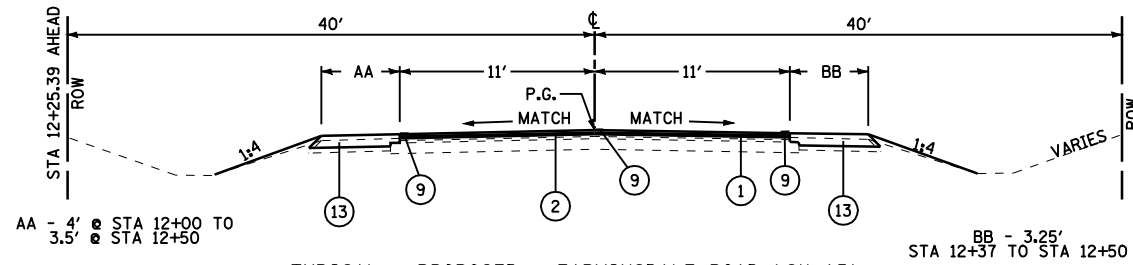
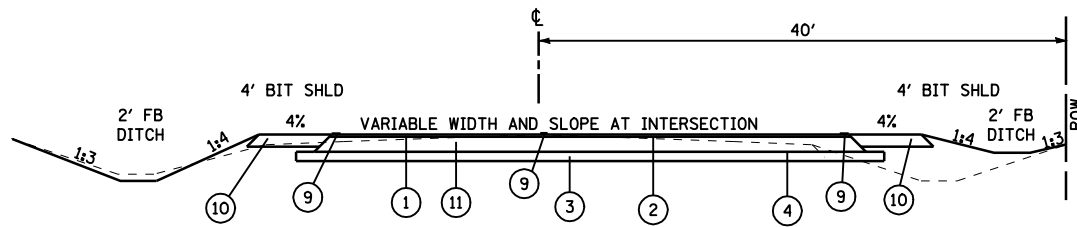


F.A.S. RTE.	SECTION	COUNTY	TOTAL SHEETS	SHEET NO.
1613	21N	SANGAMON	46	13
STA. 10+00 TO STA. 12+50 FARMINGDALE RD				
STA. 9+38.31 TO STA. 10+00 TOWNSHIP ROAD				
FED. ROAD DIST. NO.	ILLINOIS	FED. AID PROJECT		



TYPICAL - PROPOSED - FARMINGDALE ROAD (CH 15)  
NORTH SIDE OF INTERSECTION

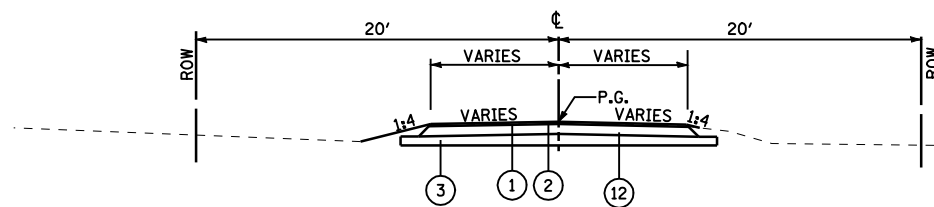
STA 12+00 TO STA 12+50  
MATCH EXISTING PAVEMENT WIDTH AT 12+50



TYPICAL - PROPOSED - FARMINGDALE ROAD (CH 15)  
NORTH SIDE OF INTERSECTION

STA 10+11.3 TO STA 12+00

STA 9+88.7 TO STA 10+00 - TOWNSHIP ROAD  
STA 10+00 TO STA 10+11.3 - FARMINGDALE ROAD  
SEE OLD US 36 TYPICALS FOR OVERLAP  
OLD US 36 TYPICALS GOVERN

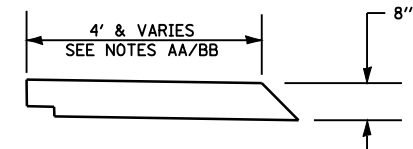


TYPICAL - PROPOSED - TOWNSHIP ROAD  
SOUTH SIDE OF INTERSECTION

STA 9+58.02 TO STA 9+88.70

LEGEND

- ① PROPOSED HOT-MIX ASPHALT SURFACE COURSE, MIX "C", N50 (1 1/2")
- ② PROPOSED LEVELING BINDER (MACHINE METHOD), N50  
DEPTH VARIES - AVERAGE THICKNESS - 1"
- ③ PROPOSED SUB-BASE GRANULAR MATERIAL TYPE B (6")
- ④ PROPOSED BITUMINOUS MATERIALS (PRIME COAT)
- ⑤ PROPOSED AGGREGATE SHOULDERS, TYPE B (WEDGE)
- ⑥ PROPOSED HOT-MIX ASPHALT SHOULDERS
- ⑦ PROPOSED HOT-MIX ASPHALT SURFACE REMOVAL - BUTT JOINT
- ⑧ PROPOSED PORTLAND CEMENT CONCRETE SURFACE REMOVAL - BUTT JOINT
- ⑨ PROPOSED PAINT PAVEMENT MARKING LINE, 5"
- ⑩ PROPOSED HOT-MIX ASPHALT SHOULDERS 8"
- ⑪ PROPOSED HOT-MIX ASPHALT BASE COURSE 10"
- ⑫ PROPOSED HOT-MIX ASPHALT BASE COURSE 6 1/2"
- ⑬ PROPOSED AGGREGATE SHOULDERS, TYPE B (8")



AGGREGATE SHOULDER DETAIL - FARMINGDALE

TYPICAL SECTIONS - PROPOSED

REVISIONS	
NAME	DATE

ILLINOIS DEPARTMENT OF TRANSPORTATION  
TYPICAL SECTIONS  
SHEET 3 OF 3  
F.A.S. ROUTE 1613 (OLD US 36)  
WITH FARMINGDALE ROAD (CH 15)  
SECTION 21N  
SANGAMON COUNTY

SCALE: NTS  
DATE: AUG, 2003  
DRAWN BY: DJK  
CHECKED BY: DBS