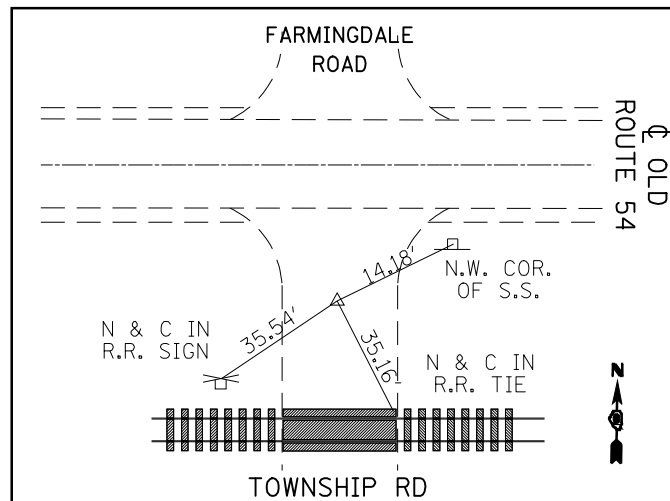
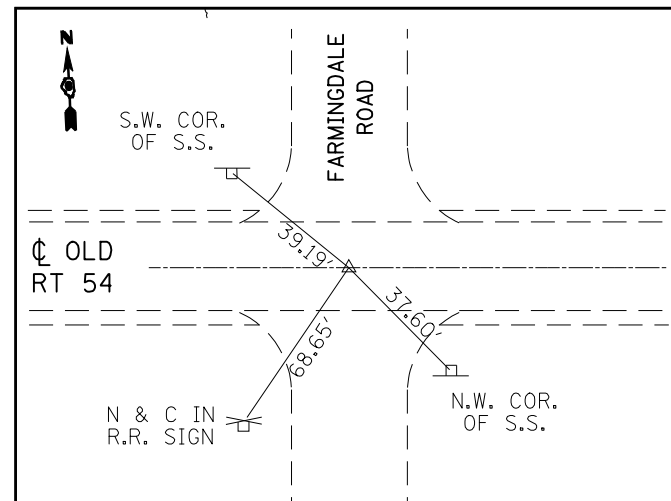


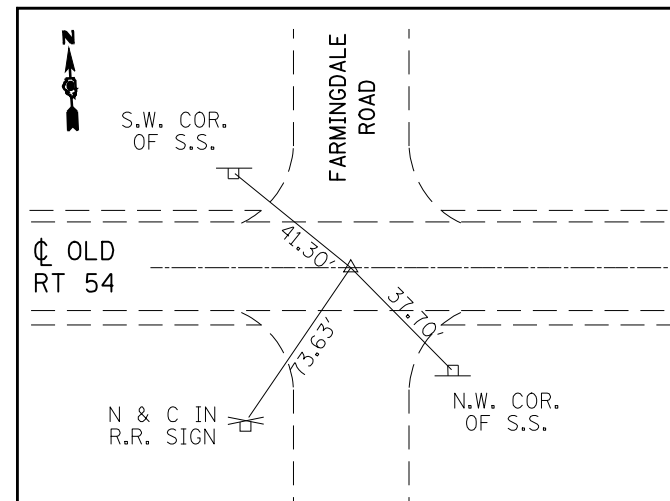
F.A.S. RTE.	SECTION	COUNTY	TOTAL SHEETS	SHEET NO.
1613	21N	SANGAMON	46	14a
FED. ROAD DIST. NO.		ILLINOIS	FED. AID PROJECT	



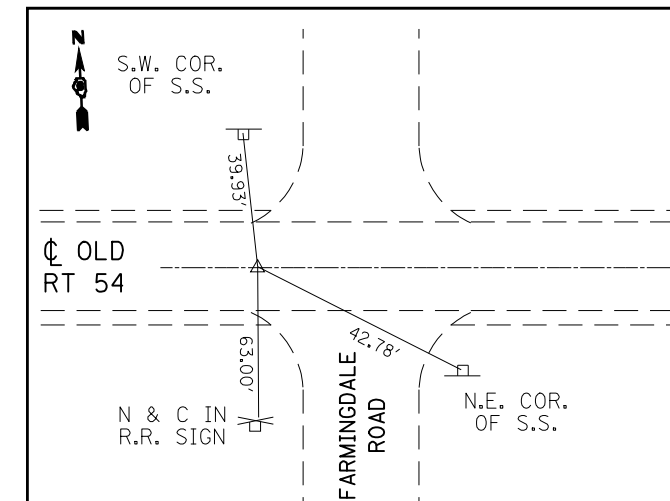
POT #1671 STA. 9+643.76
(PK N&BC) TOWNSHIP RD



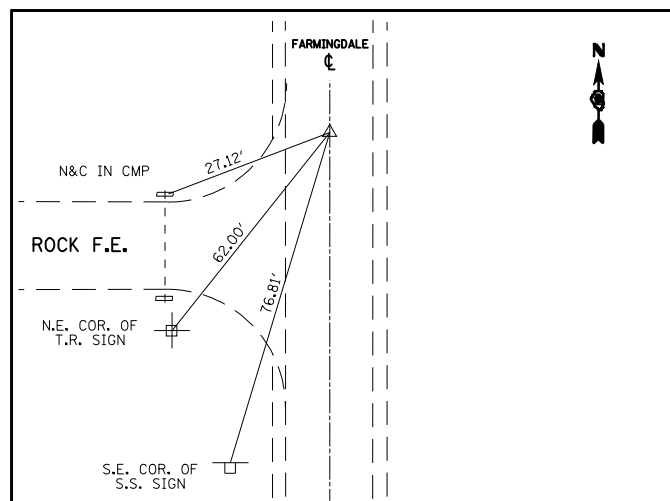
#1725 STA 10+00 = 221+34.49
(DRILLED HOLE IN CHSLD. "X")



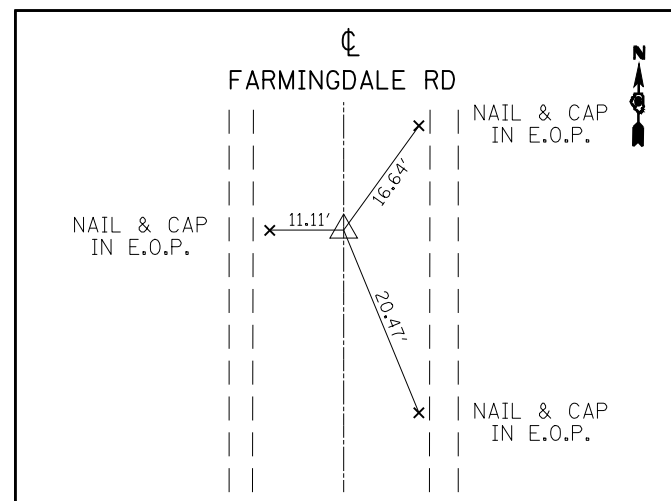
#1724 STA 10+00 = 221+44.10
(DRILLED HOLE IN CHSLD. "X")



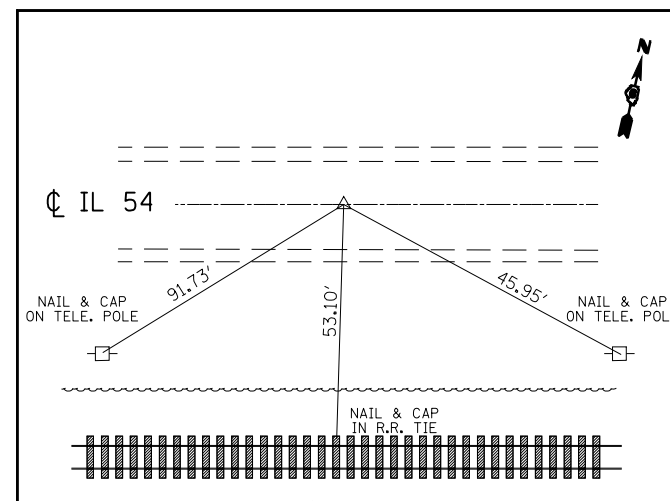
PI STA. 221+19.02
(DRILL HOLE IN CHSLD "X")



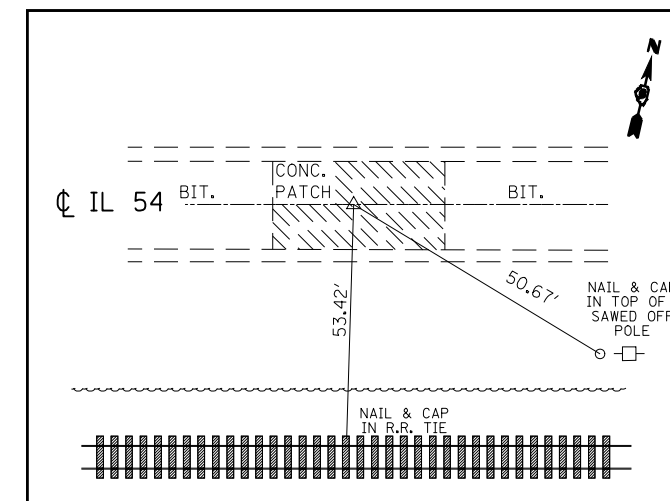
POT #1673 STA. 11+07.14
(PK N&BC W/ CHSLD "X")
FARMINGDALE RD



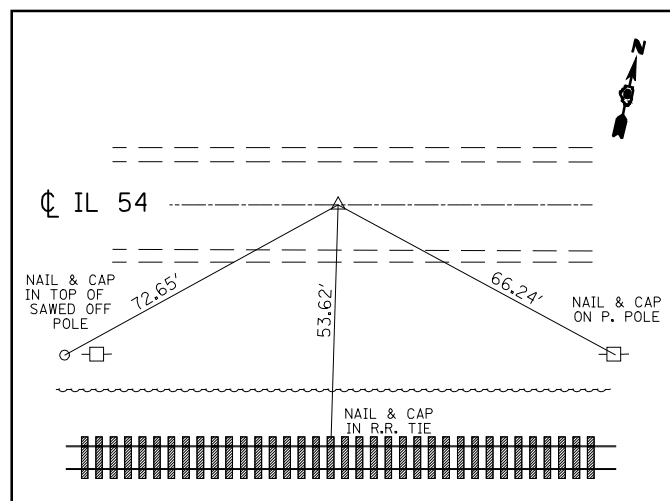
POT #1674 STA. 16+01.97
(PK N&BC W/ CHSLD "X")
FARMINGDALE RD



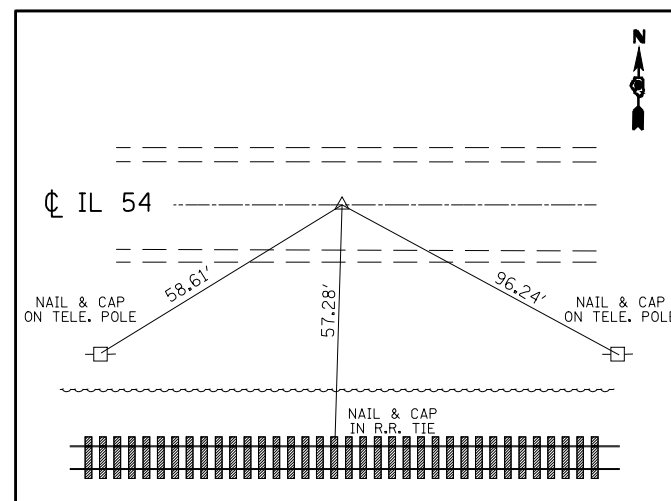
POT STA. 212+07.22
(PK N&BC W/ CHSLD "X")



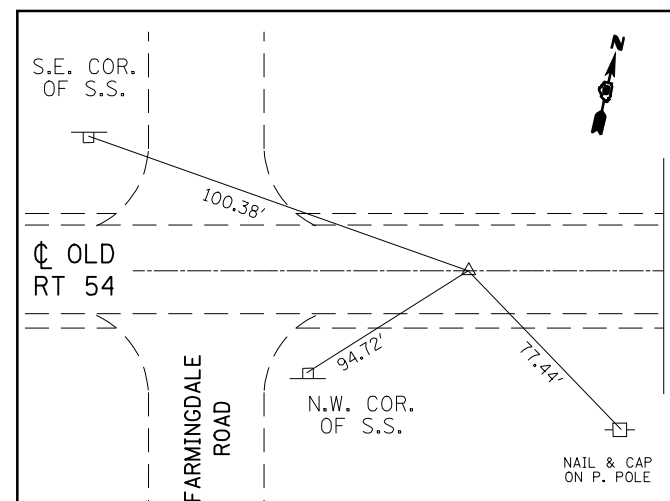
POT STA. 215+99.95
(DRILL HOLE IN CHSLD "X")



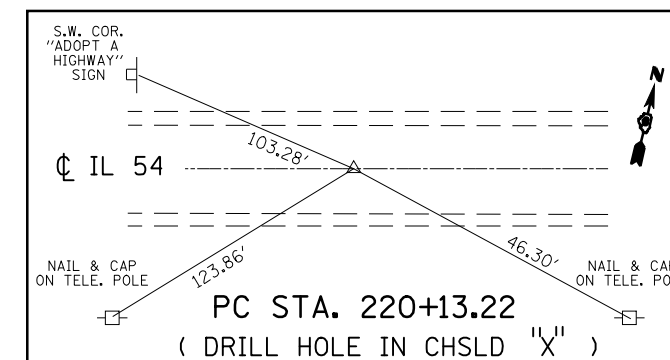
PI STA. 217+04.15
(DRILL HOLE IN CHSLD "X")



PT STA. 218+08.32
(DRILL HOLE IN CHSLD "X")



PT STA. 222+24.80
(DRILL HOLE IN CHSLD "X")



PC STA. 220+13.22
(DRILL HOLE IN CHSLD "X")

REVISIONS	
NAME	DATE

ILLINOIS DEPARTMENT OF TRANSPORTATION
CROSS TIES
FAS ROUTE 1613 (OLD US 36)
AND FARMINGDALE ROAD (CH 15)
SECTION 21N
SANGAMON COUNTY

SCALE: VERT.
HORIZ.
DATE :

DRAWN BY
CHECKED BY