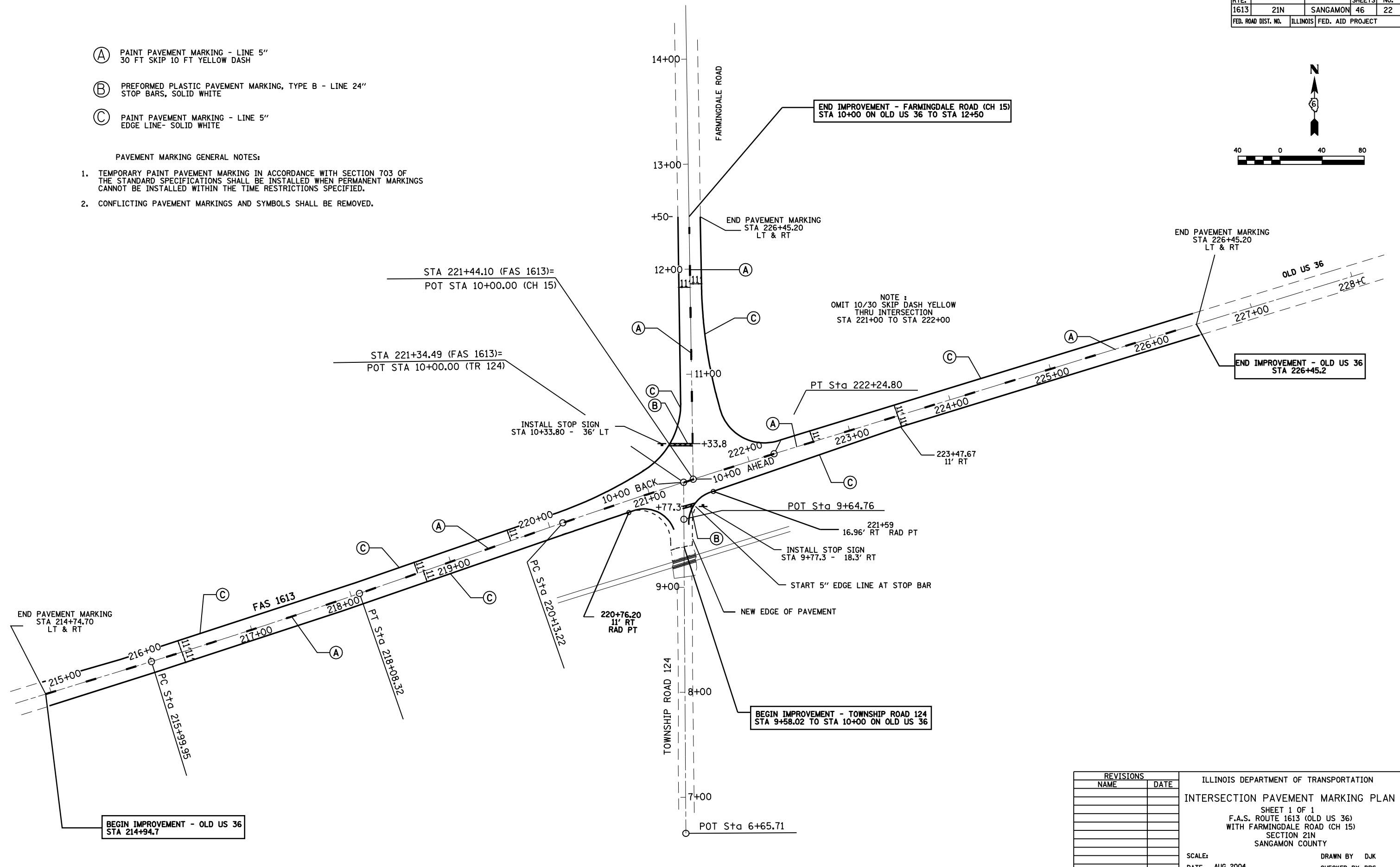
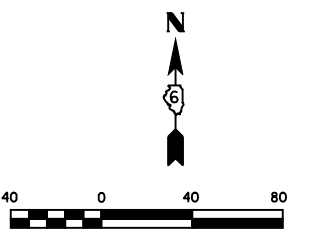


F.A.S. RTE.	SECTION	COUNTY	TOTAL SHEETS	SHEET NO.
1613	21N	SANGAMON	46	22
FED. ROAD DIST. NO.		ILLINOIS	FED. AID PROJECT	

- (A) PAINT PAVEMENT MARKING - LINE 5" 30 FT SKIP 10 FT YELLOW DASH
- (B) PREFORMED PLASTIC PAVEMENT MARKING, TYPE B - LINE 24" STOP BARS, SOLID WHITE
- (C) PAINT PAVEMENT MARKING - LINE 5" EDGE LINE- SOLID WHITE

PAVEMENT MARKING GENERAL NOTES:

1. TEMPORARY PAINT PAVEMENT MARKING IN ACCORDANCE WITH SECTION 703 OF THE STANDARD SPECIFICATIONS SHALL BE INSTALLED WHEN PERMANENT MARKINGS CANNOT BE INSTALLED WITHIN THE TIME RESTRICTIONS SPECIFIED.
2. CONFLICTING PAVEMENT MARKINGS AND SYMBOLS SHALL BE REMOVED.



NOTE :
OMIT 10/30 SKIP DASH YELLOW
THRU INTERSECTION
STA 221+00 TO STA 222+00

REVISIONS	
NAME	DATE

ILLINOIS DEPARTMENT OF TRANSPORTATION
 INTERSECTION PAVEMENT MARKING PLAN
 SHEET 1 OF 1
 F.A.S. ROUTE 1613 (OLD US 36)
 WITH FARMINGDALE ROAD (CH 15)
 SECTION 21N
 SANGAMON COUNTY
 SCALE: DRAWN BY DJK
 DATE AUG 2004 CHECKED BY DBS