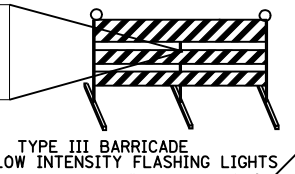
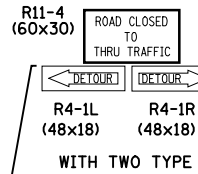
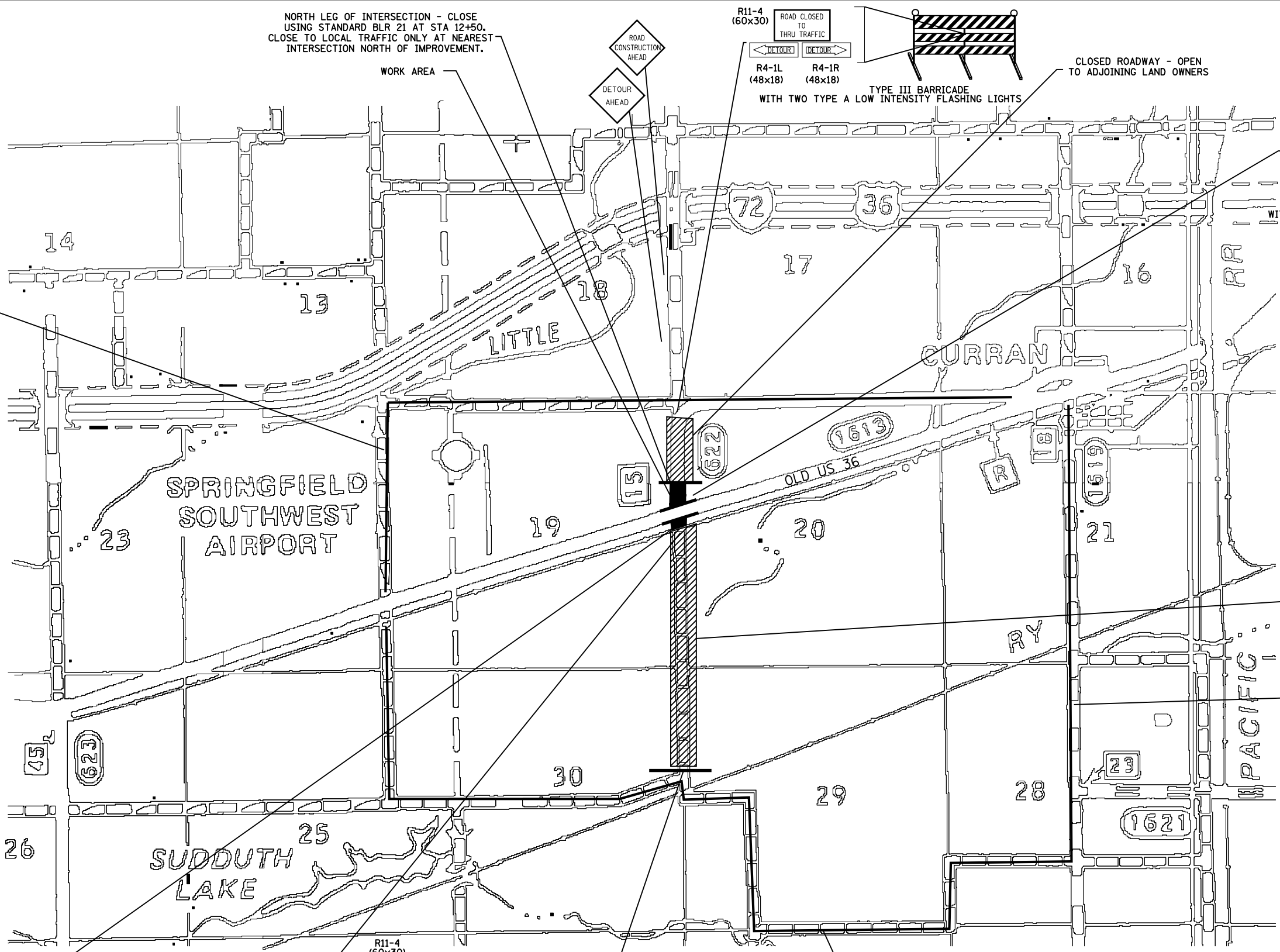


F.A.S. RTE.	SECTION	COUNTY	TOTAL SHEETS	SHEET NO.
1613	21N	SANGAMON	46	23
FED. ROAD DIST. NO.		ILLINOIS	FED. AID PROJECT	

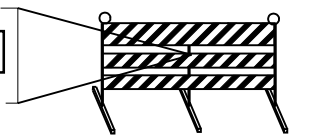
NORTH LEG OF INTERSECTION - CLOSE USING STANDARD BLR 21 AT STA 12+50. CLOSE TO LOCAL TRAFFIC ONLY AT NEAREST INTERSECTION NORTH OF IMPROVEMENT.

MAINTAIN TRAFFIC ON OLD US 36 AT ALL TIMES. WORK ON OLD US 36 TO BE DONE UNDER TRAFFIC.

DETOUR ROUTE



CLOSED ROADWAY - OPEN TO ADJOINING LAND OWNERS

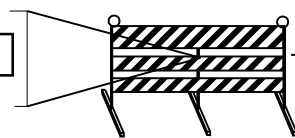
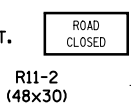


TYPE III BARRICADES WITH TWO TYPE A LOW INTENSITY FLASHING LIGHTS

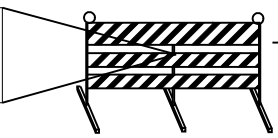
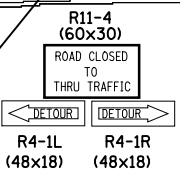
CLOSED ROADWAY - OPEN TO ADJOINING LAND OWNERS

DETOUR ROUTE

CLOSE SOUTH LEG OF INTERSECTION BETWEEN OLD US 36 AND RAILROAD TRACK AS PER STANDARD BLR 21. CLOSE TO LOCAL TRAFFIC ONLY AT CLOSEST INTERSECTION SOUTH OF IMPROVEMENT.



TYPE III BARRICADE WITH TWO TYPE A LOW INTENSITY FLASHING LIGHTS



TYPE III BARRICADE WITH TWO TYPE A LOW INTENSITY FLASHING LIGHTS

DETOUR ROUTE



REVISIONS	
NAME	DATE

ILLINOIS DEPARTMENT OF TRANSPORTATION
 TRAFFIC DETOUR PLAN
 FAS ROUTE 1613 (OLD US 36)
 AND FARMINGDALE ROAD (CH 15)
 SECTION 21N
 SANGAMON COUNTY

SCALE: VERT. HORIZ. DATE: AUGUST, 2004

DRAWN BY DJK
 CHECKED BY DBS