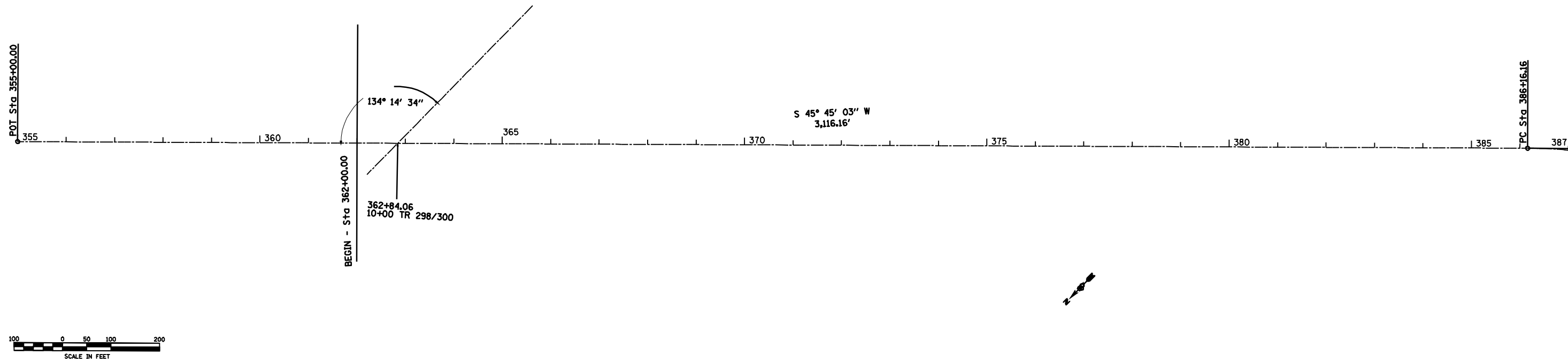
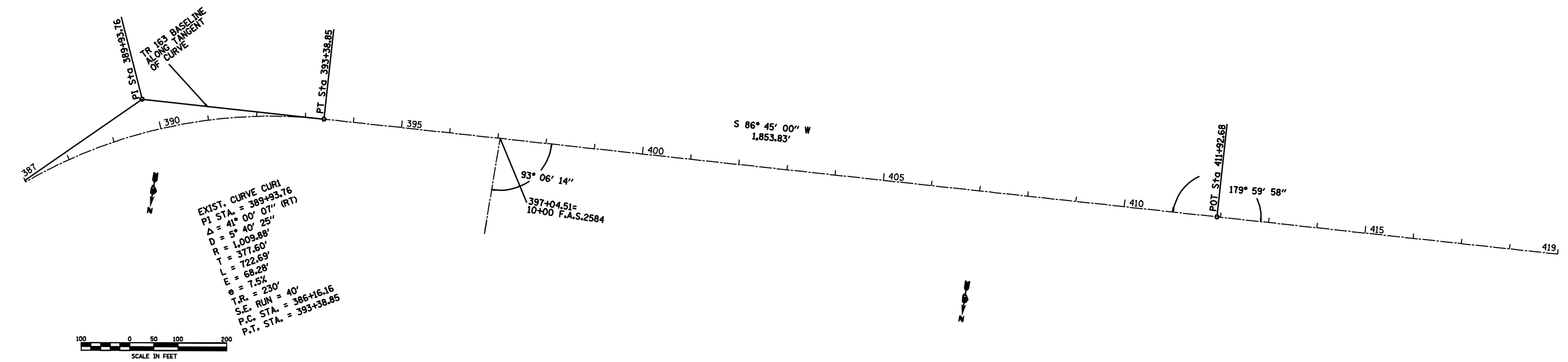


FAP RTE.	SECTION	COUNTY	TOTAL SHEETS	SHEET NO.
317	14RS-5+15RS-2	SCHUYLER	23	12
STA. 362+00		TO STA. 419+00		
FED. ROAD DIST. NO.	ILLINOIS	FED. AID PROJECT		

PLAN	SURVEYED	BY	DATE
	PLOTTED		
	CHECKED		
	BY		
	NO. OF WAY CHECKED		
	CADD FILE NAME		



PROFILE	SURVEYED	BY	DATE
	PLOTTED		
	CHECKED		
	BY		
	NO. OF WAY CHECKED		
	STRUCTURE NOTATIONS CHKD		



EXIST. CURVE CUR1
 PI STA. = 389+93.76
 $\Delta = 41^\circ 00' 07''$ (RT)
 $D = 5^\circ 40' 25''$
 $R = 1,009.88'$
 $T = 377.60'$
 $L = 722.69'$
 $E = 68.28'$
 $e = 7.5\%$
 $T.R. = 230'$
 $S.E. RUN = 40'$
 $P.C. STA. = 386+16.16$
 $P.T. STA. = 393+36.85$

c:\pwworkspace\p1\proj1\141011\141011.dgn
 REF - 66003 012131PM
 *REF -
 *REF -