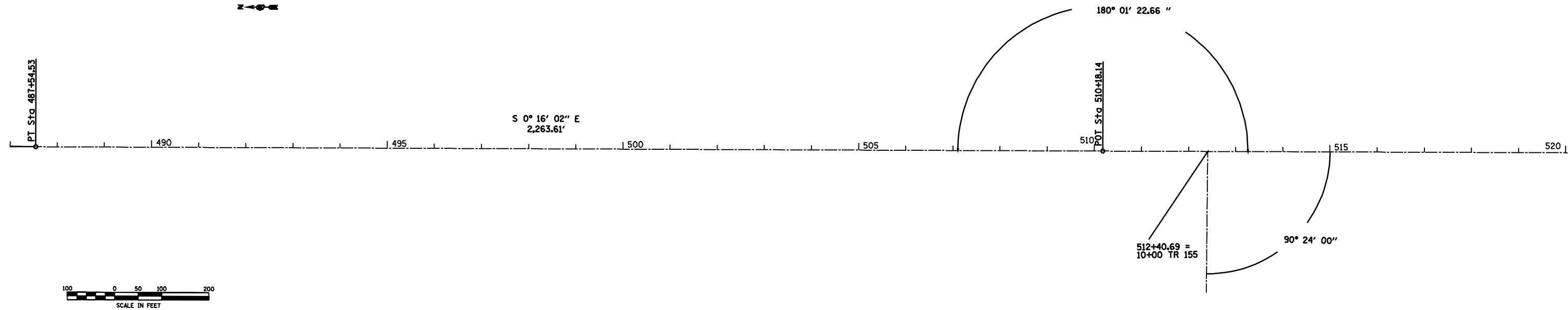
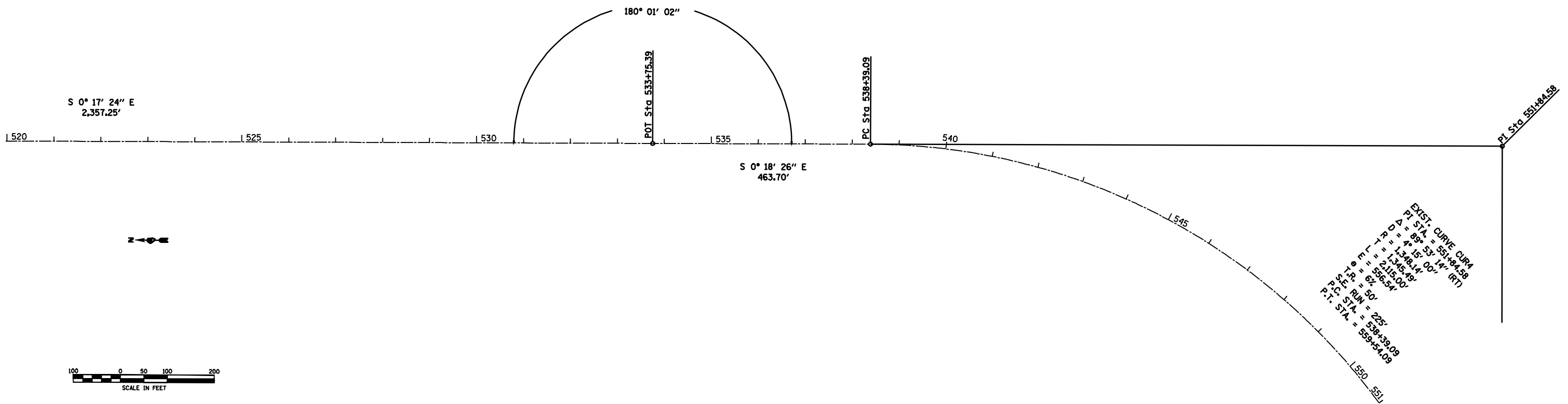


FAP RTE.	SECTION	COUNTY	TOTAL SHEETS	SHEET NO
317	14RS-5+15RS-2	SCHUYLER	23	14
STA. 487+00		TO STA. 551+00		
FED. ROAD DIST. NO.	ILLINOIS	FED. AID PROJECT		

PLAN	SURVEYED	BY	DATE
	PLOTTED		
	CHECKED		
	DATE		
	NO.		



PROFILE	SURVEYED	BY	DATE
	PLOTTED		
	CHECKED		
	DATE		
	NO.		



EXIST. CURVE CUR4  
 P.I. STA. = 551+34.58  
 $\Delta = 89^\circ 53' 14''$  (RT)  
 $L = 1,248.14'$   
 $T = 2,115.00'$   
 $E = 565.54'$   
 $P.T. = 559+54.09$   
 $P.C. = 538+39.09$   
 $P.I. = 551+34.58$

c:\pwworkspace\p1\proj\14\1401\1401.dwg  
 11/11/2009 10:12:13 AM  
 REF -  
 REF -  
 REF -  
 REF -