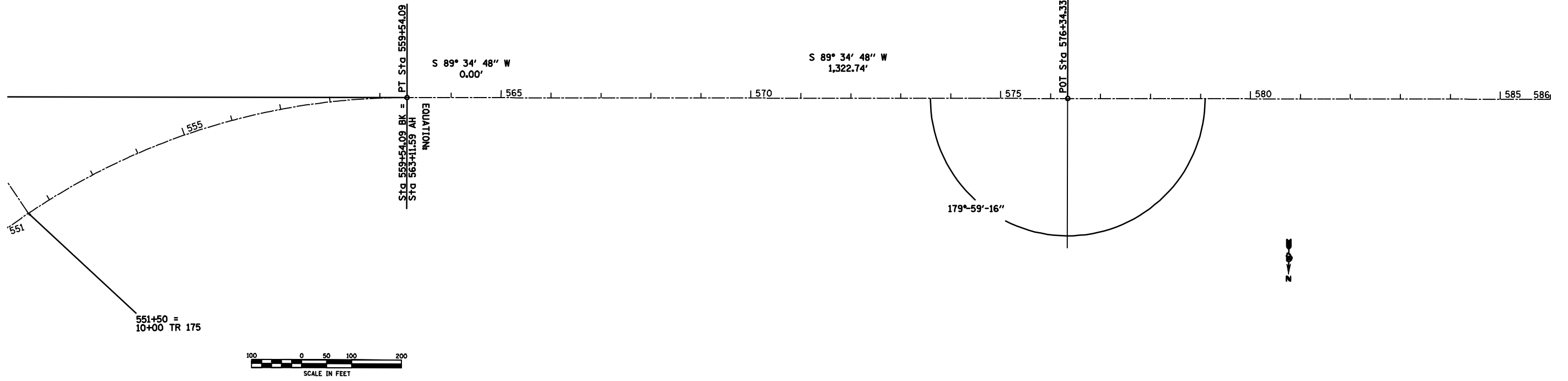
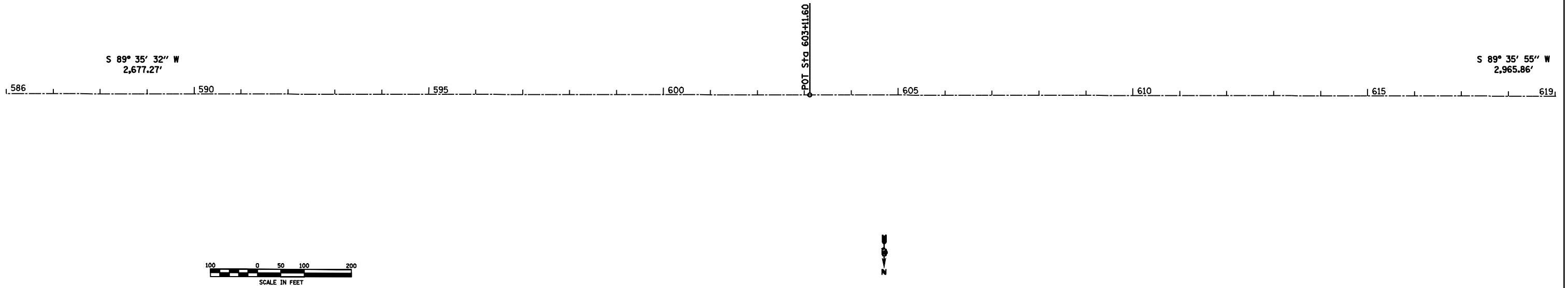


FAP RTE.	SECTION	COUNTY	TOTAL SHEETS	SHEET NO.
317	14RS-5+15RS-2	SCHUYLER	23	15
STA. 551+00		TO STA. 619+00		
FED. ROAD DIST. NO.	ILLINOIS	FED. AID PROJECT		

PLAN	SURVEYED	BY	DATE
NOTE BOOK NO.	PLOTTED		
	CHECKED		
	BY		
	DATE		



PROFILE	SURVEYED	BY	DATE
NOTE BOOK NO.	PLOTTED		
	CHECKED		
	BY		
	DATE		



c:\p\work\p\widote\LAUGHLIN\NRL\dms266338p\om&p\dm.dgn
 REF - 022
 REF -
 REF -
 REF -